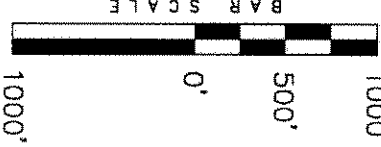


RECEIVED

ENCANA OIL & GAS (USA) INC
NOV 08 2010

TARGET BOTTOM HOLE, BENJAMIN FEE
33-1B (K28NW), LOCATED AS SHOWN
IN THE NE 1/4 NE 1/4 OF SECTION
33, T6S, R93W, 6th P.M. GARFIELD
COUNTY, COLORADO.



- NOTES:
- Well footages are measured at right angles to the Section Lines.
 - Bearings are based on Global Positioning Satellite observations.
 - Bottom of hole footages are 140' FNL & 1250' FEL of Section 33.
 - G.P.S. Operator: C.D. Slaugh, (PDOP) = 2.8

THIS IS TO CERTIFY THAT THE ABOVE PLAT WAS PREPARED FROM FIELD NOTES OF A PROFESSIONAL SURVEYOR MADE BY ME OR UNDER MY SUPERVISION. THE LOCATION HAS BEEN STAKED ON THE GROUND AS SHOWN ON THE PLAT, AND THAT THE SAME BE TRUE AND CORRECT TO THE BEST OF MY KNOWLEDGE AND BELIEF.

REGISTERED LAND SURVEYOR
STATE OF COLORADO
REGISTRATION NO. 30125
30125

TRI STATE LAND SURVEYING & CONSULTING
180 NORTH VERNAL AVE - VERNAL, UTAH 84078
(435) 781-2501

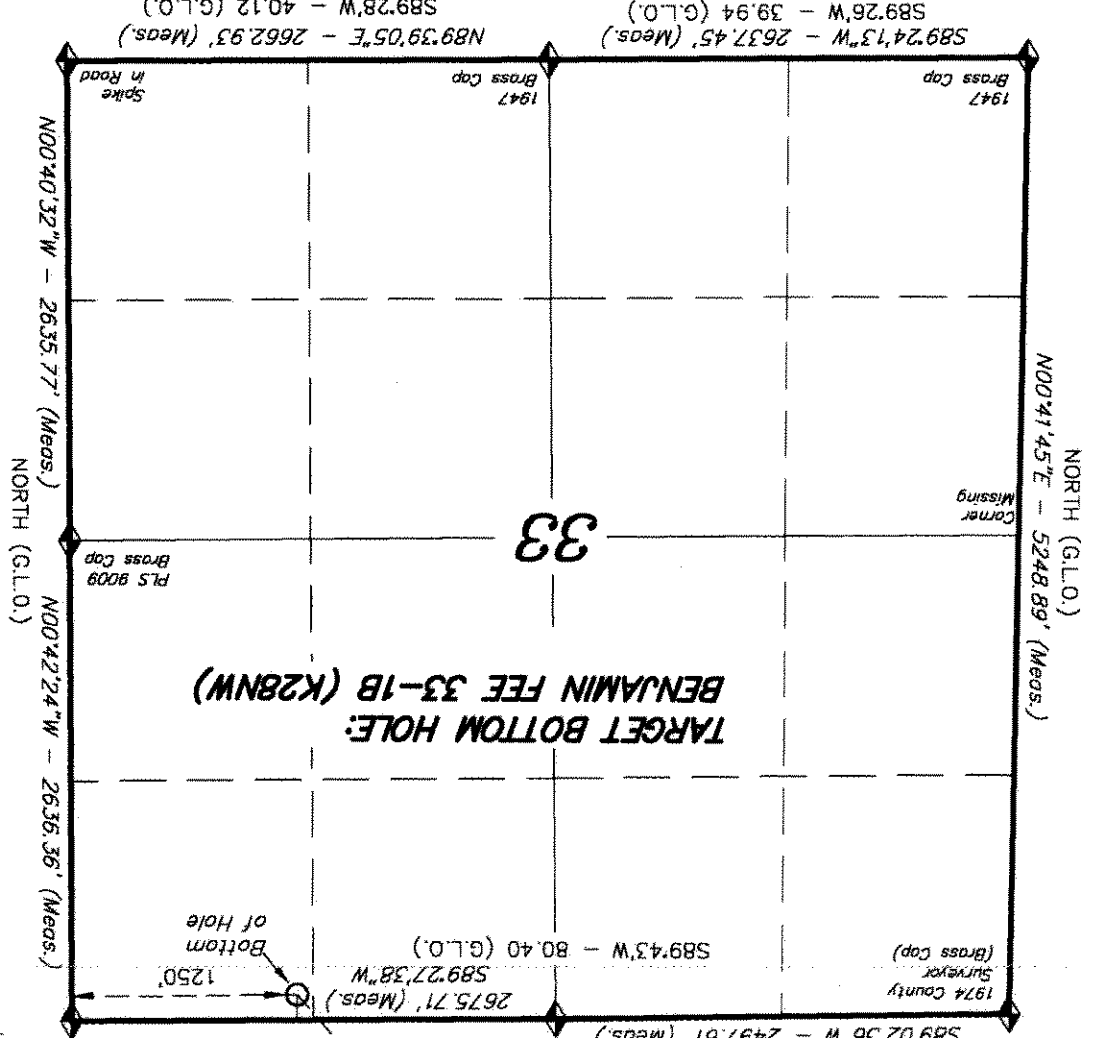
DATE SURVEYED:	06-11-10	SURVEYED BY: C.D.S.
DATE DRAWN:	06-14-10	DRAWN BY: L.C.S.
REVISED:	L.C.S. 10-25-10	SCALE: 1" = 1000'

OF 11 SHEET 2TH

IMPROVEMENT NOTE:
See addendum to legal plat (sheet 2u) for visible improvements within 400' of the proposed well pad.

T6S, R93W, 6th P.M.
2320.19'
54153.20"E
1974 County Surveyor (From top of Hole)

1974 County Surveyor Sheet 21 (Brass Cap) 21
See



◆ = SECTION CORNERS LOCATED
Basis of elevation is the Rifle 2 Triangulation Station. 39°31'53.80" N Lat. & 107°47'07.78" W Long. (NAD 83). Elevation = 5323.1' (NAVD88).

