

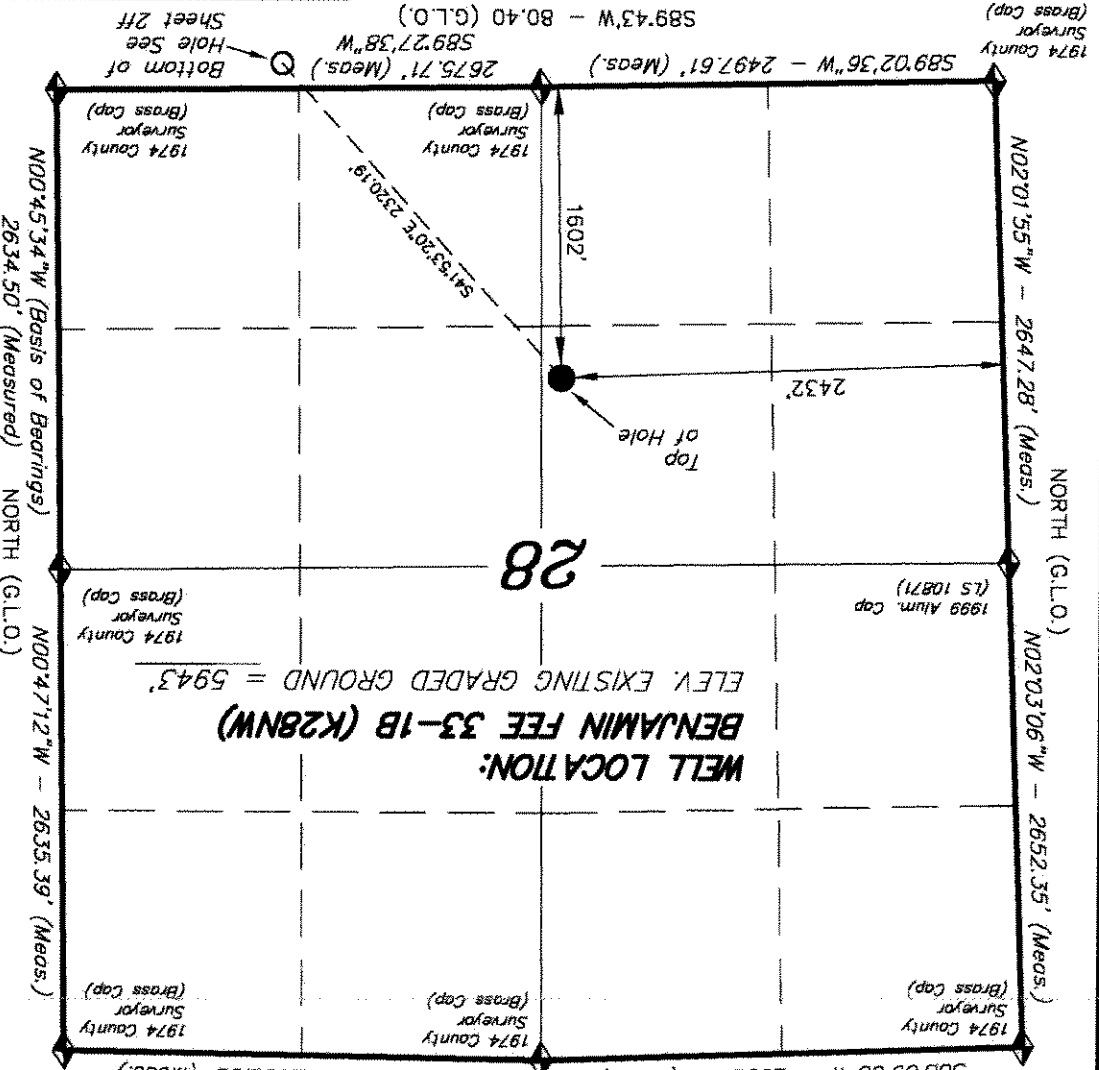
IMPROVEMENT NOTE:

See addendum to legal plat (sheet 2u) for visible improvements within 400' of the proposed well pad.

T6S, R93W, 6th P.M.

N89°34'W - 80.10 (G.L.O.)

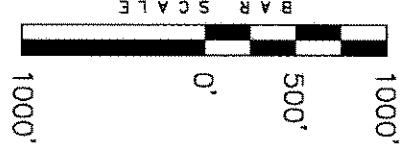
S88°09'05"W - 2653.65' (Meas.)
N89°00'39"W - 2638.68' (Meas.)



NAD 83 (SURFACE LOCATION)
 LATITUDE = 39.2939.57" (39.494325)
 LONGITUDE = 107.4650.85" (107.780792)

◆ = SECTION CORNERS LOCATED
 Basis of elevation is the Rifle 2 Triangulation Station, 39°31'53.80" N Lat. & 107°47'07.78" W Long. (NAD 83). Elevation = 5323.1' (NAVD88).

WELL LOCATION, BENJAMIN FEE 33-1B (K28NW), LOCATED AS SHOWN IN THIS PLAT, IS LOCATED AS SHOWN IN THE PLAT. NE 1/4 SW 1/4 OF SECTION 28, T6S, R93W, 6th P.M. GARFIELD COUNTY, COLORADO.



- NOTES:**
1. Well footages are measured at right angles to the Section Lines.
 2. Bearings are based on Global Positioning Satellite observations.
 3. G.P.S. Operator: C.D. Slough, (PDOP) = 2.8

THIS IS TO CERTIFY THAT THE ABOVE PLAT WAS PREPARED FROM FIELD NOTES OF SURVEYS MADE BY ME OR UNDER MY SUPERVISION. THE LOCATION HAS BEEN STAKED ON THE GROUND AS SHOWN ON THE PLAT, AND THAT THE SAME ARE TRUE AND CORRECT TO THE BEST OF MY KNOWLEDGE AND BELIEF.

STATE OF COLORADO
 REGISTERED LAND SURVEYOR
 REGISTRATION NO. 30125
 # 30125

TRI STATE LAND SURVEYING & CONSULTING
 180 NORTH VERNAL AVE. - VERNAL, UTAH 84078
 (435) 781-2501

DATE SURVEYED:	06-11-10	SURVEYED BY: C.D.S.
DATE DRAWN:	06-14-10	DRAWN BY: L.C.S.
REVISIONS:	L.C.S. 10-25-10	SCALE: 1" = 1000'

2f
 SHEET
 OF 11



RECEIVED
 NOV 08 2010
ENCANA OIL & GAS (USA) INC