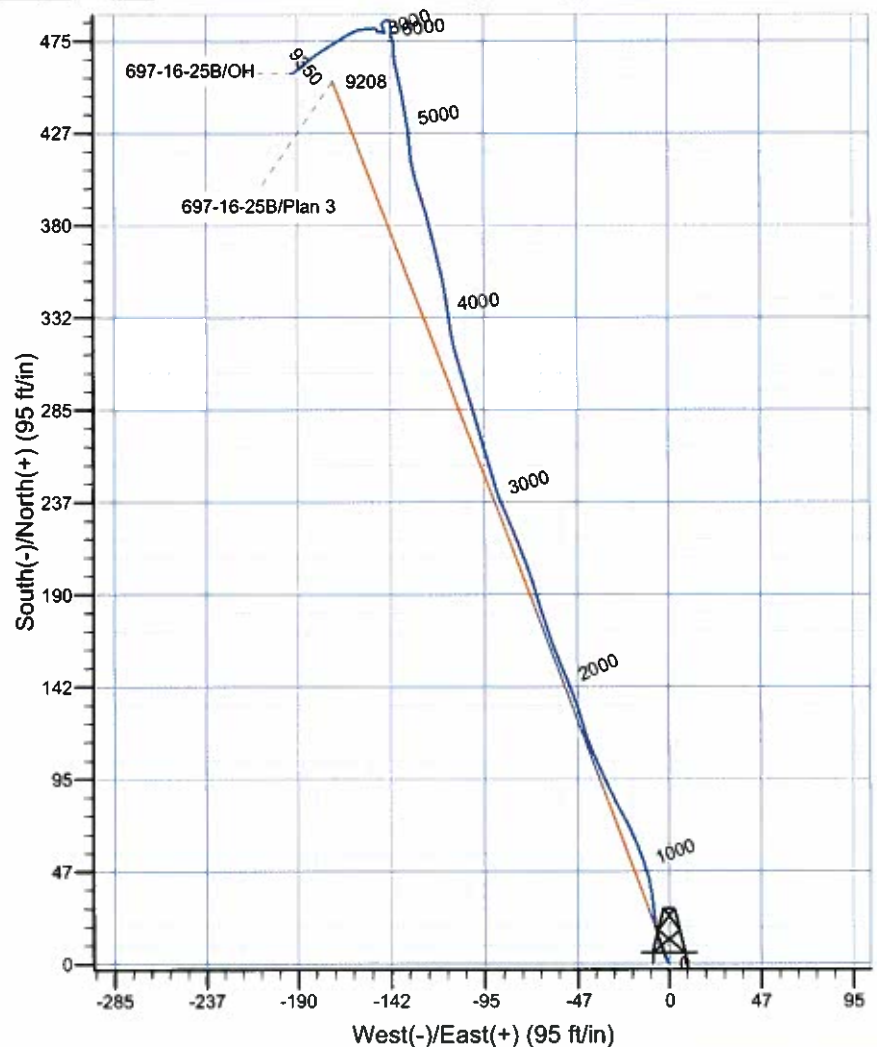
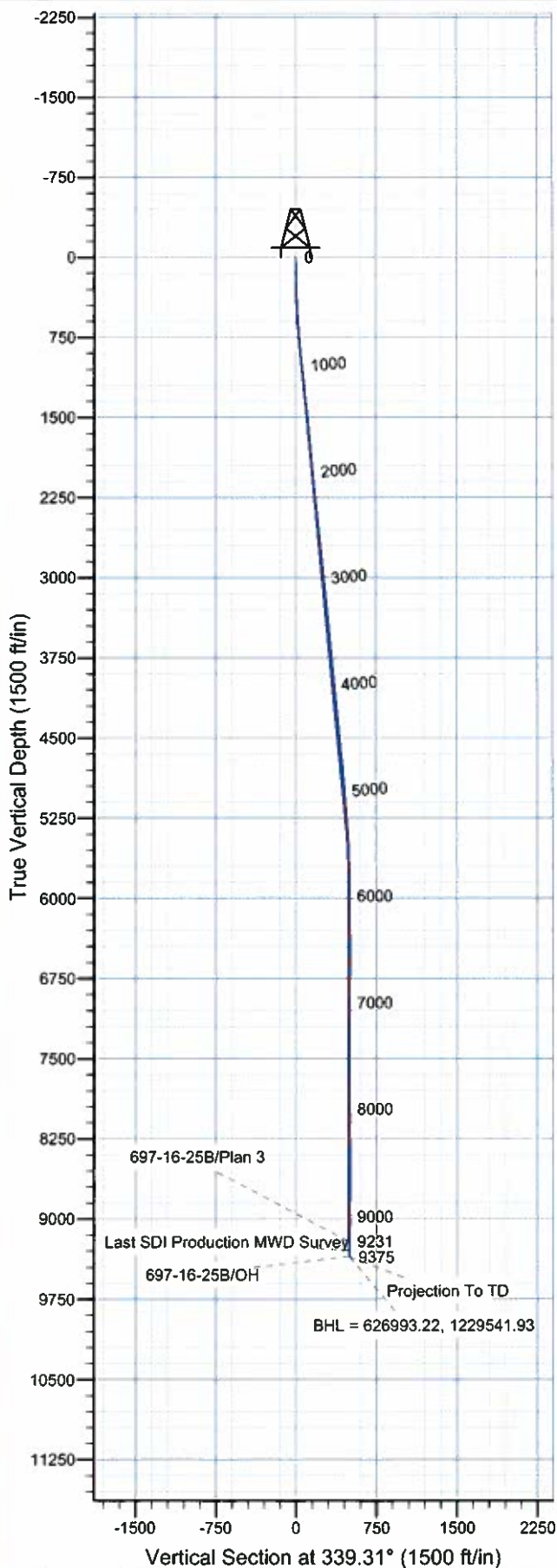




Scientific Drilling
Rocky Mountain Operations

Project: Garfield County, CO NAD27
Site: Cascade Creek 697-16A II Pad
Well: 697-16-25B
Wellbore: OH
Design: OH

OXY USA RMAT



WELL DETAILS: 697-16-25B

Ground Level 8312' & RKB 30' @ 8342.00ft
+N/-S +E/-W Northing Easting Latitude Longitude
0.00 0.00 626529.42 1229720.17 39° 31' 18.670 N 108° 13' 51.210 W

REFERENCE INFORMATION

Co-ordinate (N/E) Reference: Well 697-16-25B, True North
Vertical (TVD) Reference: GL 8312' & RKB 30' @ 8342.00ft
Section (VS) Reference: Slot - (0.00N, 0.00E)
Measured Depth Reference: GL 8312' & RKB 30' @ 8342.00ft
Calculation Method: Minimum Curvature
Local North: True
Location: Sec 16 T6S R97W

PROJECT DETAILS: Garfield County, CO NAD27

Geodetic System: US State Plane 1927 (Exact solution)
Datum: NAD 1927 (NADCON CONUS)
Ellipsoid: Clarke 1866
Zone: Colorado Central 502

Design: OH (697-16-25B/OH)

Created By: Rex Hall Date: 2010-02-26