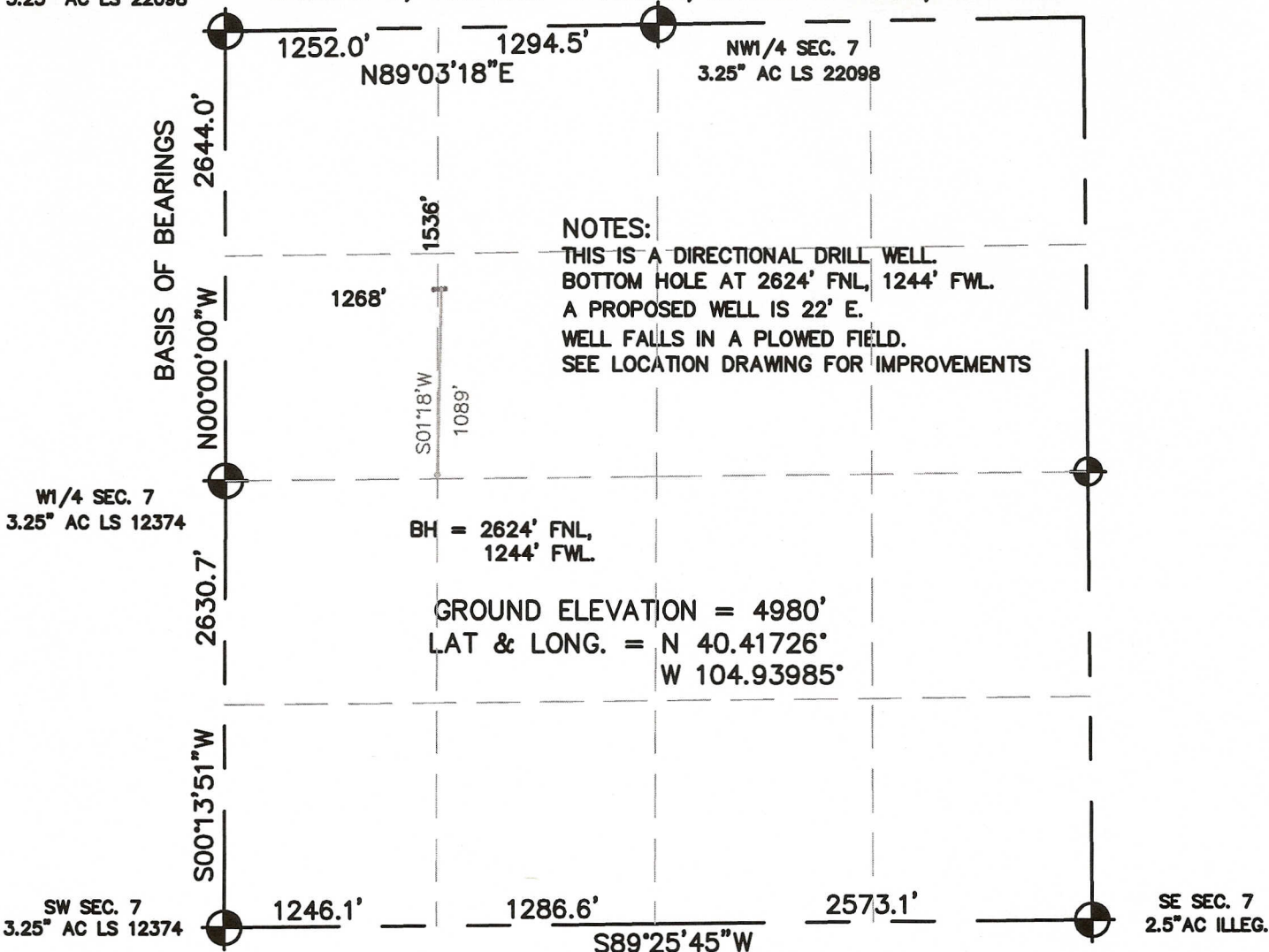


WELL LOCATION CERTIFICATE

NW SEC. 7
3.25" AC LS 22098

SECTION 7, TOWNSHIP 5 NORTH, RANGE 67 WEST, 6TH P.M.



NOTES:

THIS IS A DIRECTIONAL DRILL WELL.
BOTTOM HOLE AT 2624' FNL, 1244' FWL.
A PROPOSED WELL IS 22' E.
WELL FALLS IN A PLOWED FIELD.
SEE LOCATION DRAWING FOR IMPROVEMENTS

BH = 2624' FNL,
1244' FWL

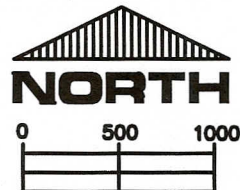
GROUND ELEVATION = 4980'
LAT & LONG. = N 40.41726°
W 104.93985°

I HEREBY STATE TO UNIOIL THAT THIS WELL LOCATION CERTIFICATE
FOR THE WELL HEINRICY 7KDU IS LOCATED 1536' FNL & 1268' FWL, SEC. 7, T5N, R67W, 6PM.



LEGEND

- FOUND MONUMENT
- PROPOSED WELL
- BOTTOM HOLE



SCALE 1" = 1000'

ELEVATION SOURCE = USGS 7.5' QUAD.MAP CONTOURS
NGVD 1929 DATUM.

LAT. & LONG. ARE DIFFERENTIALLY CORRECTED (NAD'83)
USING (DGPS) WITH (PDOP) VALUES LESS THAN SIX (6).

SHOWN DISTANCES ARE FIELD MEASURED - EXTERIOR SECTION LINES
ARE DRAWN TO SCALE (BEST APPROX. OR FOUND MONUMENT).

THOMAS G. CARLSON, PLS 24657
HORSESHOE SURVEYING, LLC

THIS IS NOT A MONUMENTED BOUNDARY SURVEY, IT IS ONLY A
DRAWING INTENDED TO DEPICT THE WELL LOCATION TO SECTION LINES.

DISTANCES TO WELL SHOWN PERPENDICULAR
TO SECTION LINES.

PREPARED BY: HORSESHOE SURVEYING, LLC PO BOX 150458 LAKEWOOD, CO 80215 (720)872-0196		WELL NAME: HEINRICY 7KDU	
DRAWING DATE: 10-1-10		LOCATION: WELD COUNTY, CO NW1/4, SEC. 7, T5N, R67W, 6TH P.M.	
FIELD DATE: 9-30-10	BY: TGC	CHKD:	JOB NO. SHEET NO. 1 OF 1