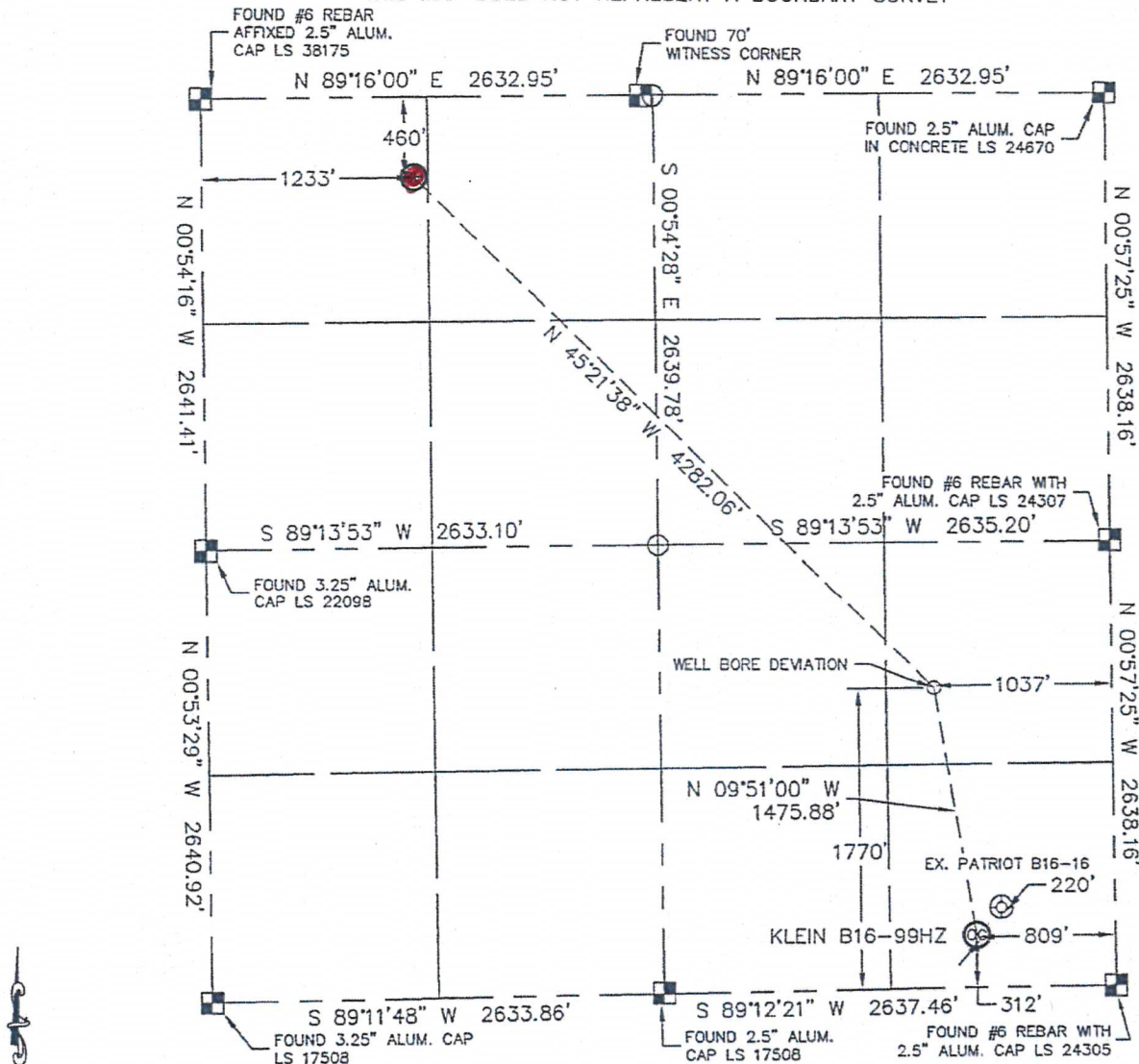


Lat40°, LLC 1635 Foxtrail Drive, Suite 325 Loveland, CO 80538

# WELL LOCATION CERTIFICATE

SECTION: 16  
TOWNSHIP: 5N  
RANGE: 64W

THIS MAP DOES NOT REPRESENT A BOUNDARY SURVEY



In accordance with a request from Roger Lowe with Noble Energy Inc. Lat40°, LLC has determined the surface location of the KLEIN B16-99HZ to be 312' from the SOUTH line and 809' from the EAST line and the bottom hole to be 460' from the NORTH line and 1233' from the WEST line as measured at right angles from the section line of Section 16, Township 5 North, Range 64 West of the Sixth Principal Meridian, County of Weld, State of Colorado.

I hereby state that this Well Location Certificate was prepared by me, or under my direct supervision, that the fieldwork was completed on 8-25-10, for and on behalf of Noble Energy Inc. That this is not a Land Survey Plat or an Improvement Survey Plat, and that it is not to be relied upon for establishment of fence, building, or other future improvement lines.

## NOTE:

- 1) Bearings shown are Grid Bearings of the Colorado State Plane Coordinate System, North Zone, North American Datum 1983/2007. The lined dimensions as contained herein are based upon the "U.S. Survey Foot."
- 2) Ground elevations are based on an observed GPS elevation (NAVD 1988 DATUM).
- 3) NEAREST EXISTING WELL: PATRIOT B16-16 220'
- 4) IMPROVEMENTS: See LOCATION DRAWING exhibit for all visible improvements within 400' of disturbed area.
- 5) SURFACE USE: RANGELAND
- 6) INSTRUMENT OPERATOR: BRIAN BRINKMAN

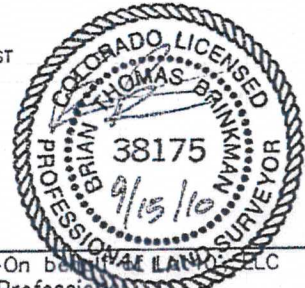
## NOTE

According to Colorado law, you must commence any legal action based upon any defect in this W.L.C. within three years after you discover such defect. In no event, may any action based upon any defect in this survey be commenced more than ten years after the date of the certificate shown hereon. (13-80-105 C.R.S.)

## LEGEND

- = ALIQUOT MONUMENT AS DESCRIBED
- = CALCULATED POSITION

<b>SURFACE LOCATION</b>	<b>BOTTOM HOLE</b>	<b>WELL BORE DEVIATION</b>
LATITUDE: 40.39296°N	LATITUDE: 40.40530°N	LATITUDE: 40.39695°N
LONGITUDE: 104.54838°W	LONGITUDE: 104.56005°W	LONGITUDE: 104.54923°W
PDOP: 2.0		
ELEV: 4607		
1/4, 1/4: SE1/4SE1/4		
NEAREST PROPERTY LINE: 274' EAST		



Brian T. Brinkman-On behalf of Lat40°, LLC  
Colorado Licensed Professional  
Land Surveyor No. 38175  
PROJECT#: 2010088

# SITE SKETCH

SECTION: 16  
TOWNSHIP: 5N  
RANGE: 64W

