

Sanjel ★
A Specialized Energy Service Company

This service ticket is not an invoice; pricing is subject to review and change without notice.

U4006 REV.0. 06/08

Primary Cementing
Service Report



SERVICE TICKET
9154265

Client Name	Well Name	Job Date
Augustus Energy Partners	Johnson Prescott 13-15	August 5, 2010
Client Representative	Well Location	Job Type
Justin Stone	Sec15 T 2S R 46W	Production

Well & Cement Plug Data:

Description	Size (in)	Weight (lb/ft)	Grade	Max. Pres. (psi)	True measured depth		Capacity (bbls)	Casing Attachments and Tools	TMD (ft)
					Start (ft)	End (ft)			
Drill Pipe/Tubing	-	-	-	-	-	-	-	Guide/Float Shoe	42.15
Open Hole	6.25	-	-	-	kb	2546.00	-	Float Collar	2493.71
Casing	4.50	10.50	-	-	Kb	2535.86	-	MSCC	
	-	-	-	-	-	-	-	ECP	
	-	-	-	-	-	-	-	Liner Hanger	
	-	-	-	-	-	-	-		
	-	-	-	-	-	-	-		
Cementing Plugs									

Fluid & Cement Data :

Drilling Fluid: Type:		Density: (lb/gal)		YP:		PV:		Temp (°F) Water		Bulk:	Slurry:
#	Sacks	Volume (bbls)	Density (lb/gal)	Yield ft ³ /sk	Description	% - Additive	% - Additive	% - Additive	% - Additive	% - Additive	% - Additive
1	95	41.02	12	2.45	0:1:0 Typelll	.25%/sk polyflake	1% SMS	1% CaCl2	2%0GC-60		
2	92	18.84	15.8	1.15	0:1:0 G	25%/per sk Polyflake	0.25% CFR-2	0.6% CFL-3	1%CaCl2		
3			-			0.2%SPC-2	-	-	-		
4											
5											
6											
7											

Treatment Report :

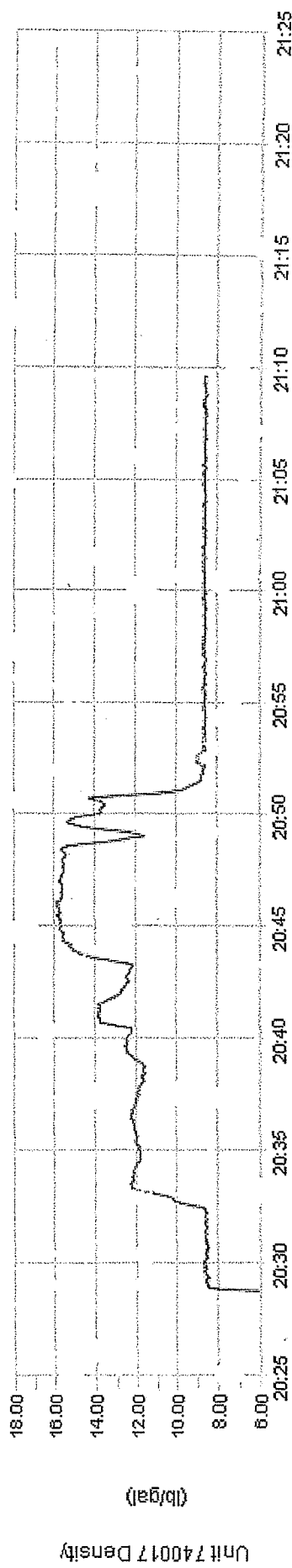
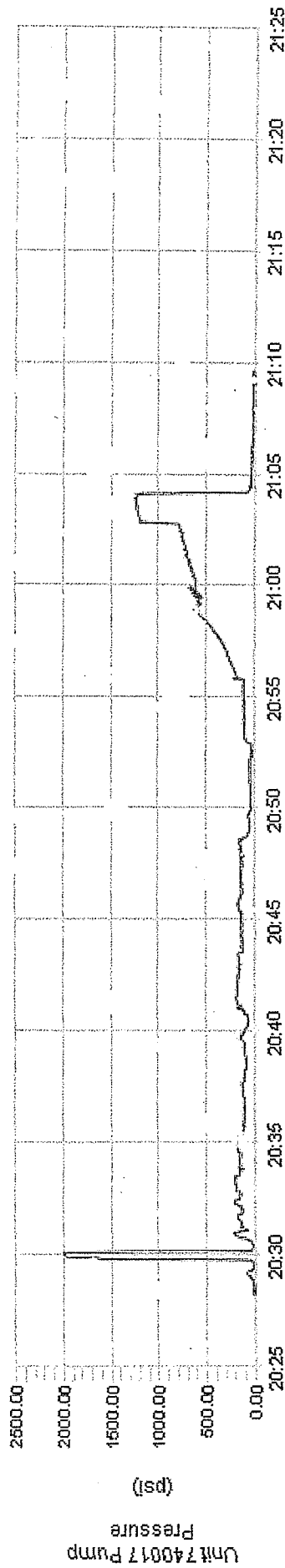
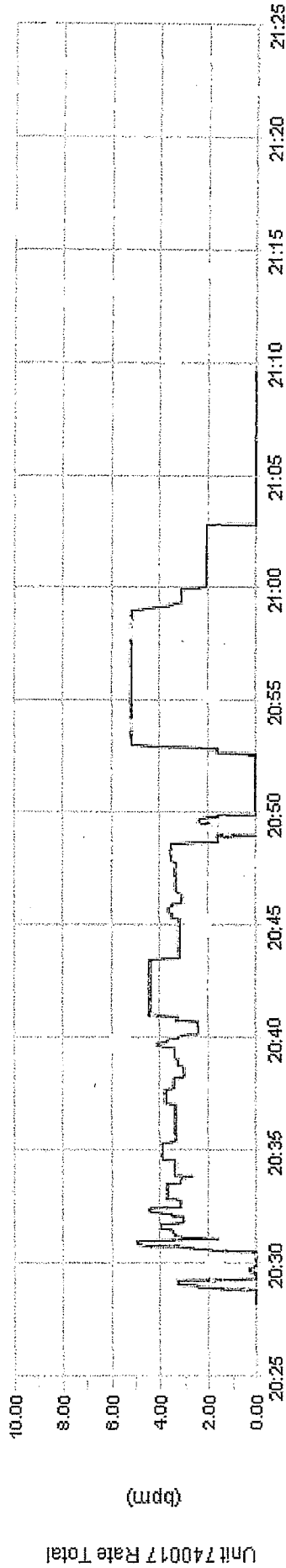
Event	Time	Pressure (psi)		Rate bbls/min	Stage Volume (bbls)	Total Volume (bbls)	Remarks	
		Tubular	Annular					
1	0:00	-	-	-	-	-	Arrive on Location - Time Requested :	19:00
2	0:00	-	-	-	-	-	Safety Meeting Held	19:50
3	20:30	2000.0	-	-	-	-	Pressure Test Surface Treating Lines	
4	20:32	200.0	-	5.0	7.0	7.0	Fresh H2O Ahead	
5	20:33	200.0	-	5.0	41.0	48.0	Lead Cement	
6	20:43	200.0	-	3.0	17.0	65.0	Tail cement	
7	20:50	-	-	-	-	-	Drop Plug	
8	20:53	250.0	-	5.0	41.0	106.0	Displace Plug	
9	21:03	1200.0	-	0.0	-	-	Bump Plug 500 PSI Over	
Fluid Returns							Vol : (bbls)	BBLS Returns 5bbls

Personnel & Equipment :

Employee	Unit #	Arrive	Depart	Travel Bonus	Bin #
Ty Pratt	200525	8/5/10 18:30	8/5/10 22:30		Bin # -
Jarrold Gerbitz	740017	"	"		Bin # -
Ron Carwin	746089	"	"		MTS# 6682
Lance Kalivas	200525	"	"		MTS# -
-	-	"	"		MTS# -

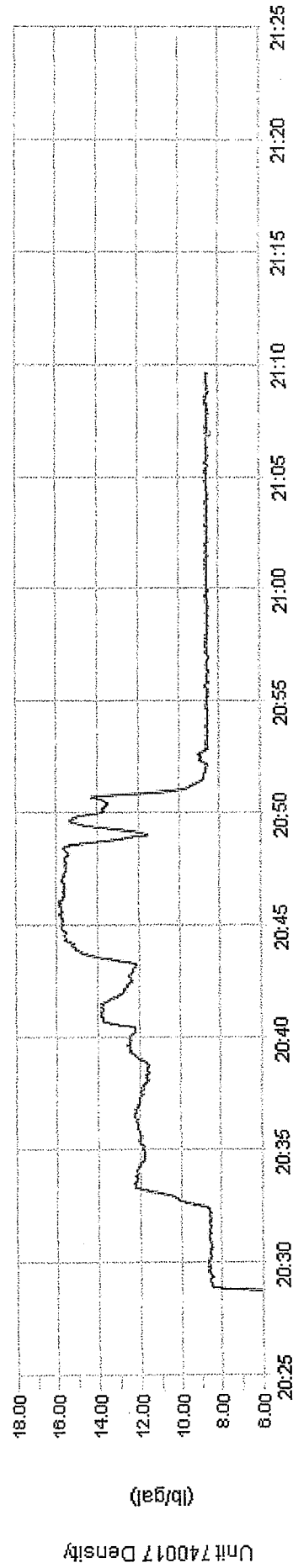
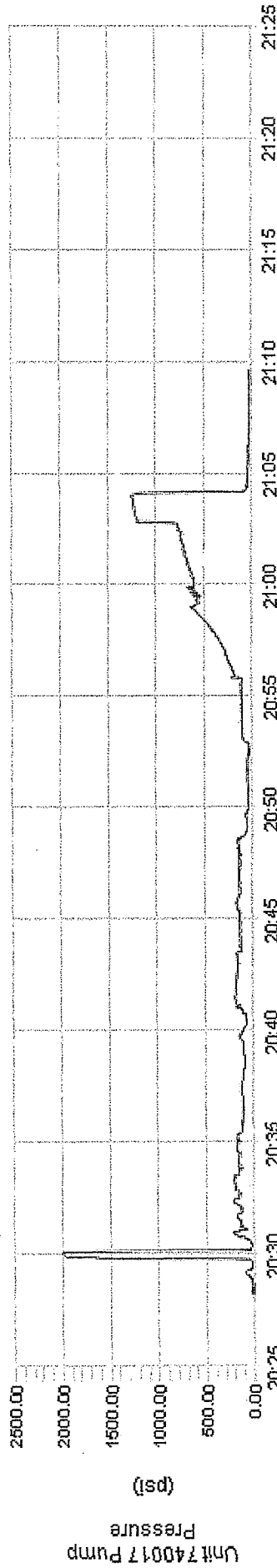
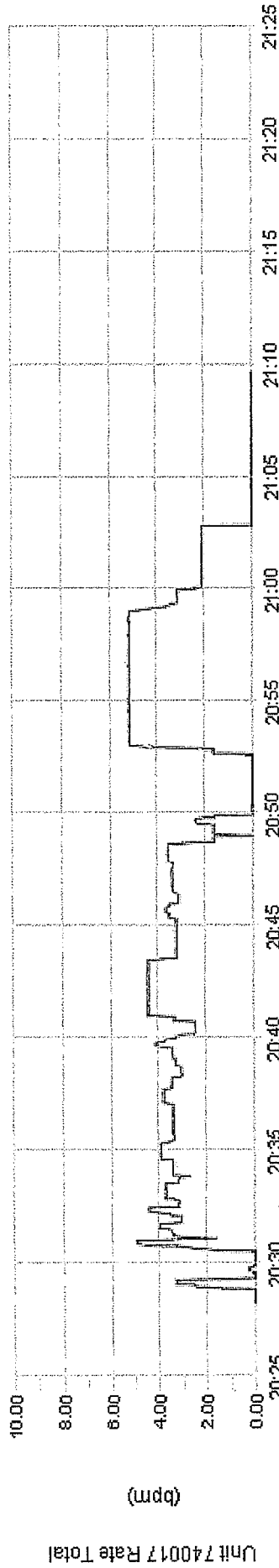


Client	Augustus Energy	Client Rep	Justin Stone	Supervisor	Ty Pratt
Ticket No.	9154265	Well Name	Johnson Prescott 13-15	Unit No.	740017
Location	Sec 15 T2S R46W	Job Type	Production Casing	Service District	51 Wray
Comments	Pump Fresh H2O, Cement Pump Fresh H2O				
				Job Date	08/05/2010





Client	Augustus Energy	Client Rep	Justin Stone	Supervisor	Ty Pratt
Ticket No.	9154265	Well Name	Johnson Prescott 13-15	Unit No.	740017
Location	Sec 15 T2S R46W	Job Type	Production Casing	Service District	51 Wray
Comments	Pump Fresh H2O, Cement Pump Fresh H2O				
				Job Date	08/05/2010





PRE-JOB SAFETY MEETING - JOB SAFETY ANALYSIS (JSA)

Customer Name: Augustus Date: 4-5-10 Service Ticket No.: 9154265
Total People on Location: 10 Location: Prescott John Prescott 13-15

Emergency Response Plan: (muster point, emergency procedures, location of emergency shower, eyewash station, fire extinguishers, first aid kits)
lease entrance is muster point, eye wash stations in Sanjel trucks

How do we signal "STOP WORK"? Hand across throat

Safety Meeting Discussion: (Topics should include brief job scope, PPE, site specific hazards, environmental issues, people's responsibilities)
Meet at lease entrance, stay back from cementing equipment

Job Safety Analysis:

1. Break the job down into steps.	2. Identify the hazards associated with each step.	3. Develop ways to control the hazards.
Sequence of Basic Job Steps	Potential Hazards	Recommended Controls
Drive to location	Blow , Hitting Something	use land guides
Rig-In	Hammers, ^{Biological Agents} lifting	stay back
Pressure Test	blowing lines ^{Chemicals} apart	stay back
Do Job	Cement ^{Electrical} dust	wear PPE
Rig-Out	Hammers, ^{Fire} lifting	use 2 people to lift
Drive off location	Hitting something ^{Medical}	use land guides
	Pressure	
	Radiation	
	Temperature Extremes	

Attendees: (Print name and sign. If there are not enough lines use a second document from this book and enter the same Service Ticket No.)

Lance Kalivas
John Prescott
Don Diamond
Kevin Smith
Lance Kalivas
John Prescott

Customer Representative:

Don Diamond
Print Name

Don Diamond
Signature

Sanjel Supervisor:

Ty V. Pratt
Print Name

Ty V. Pratt
Signature