



Lat40°, LLC

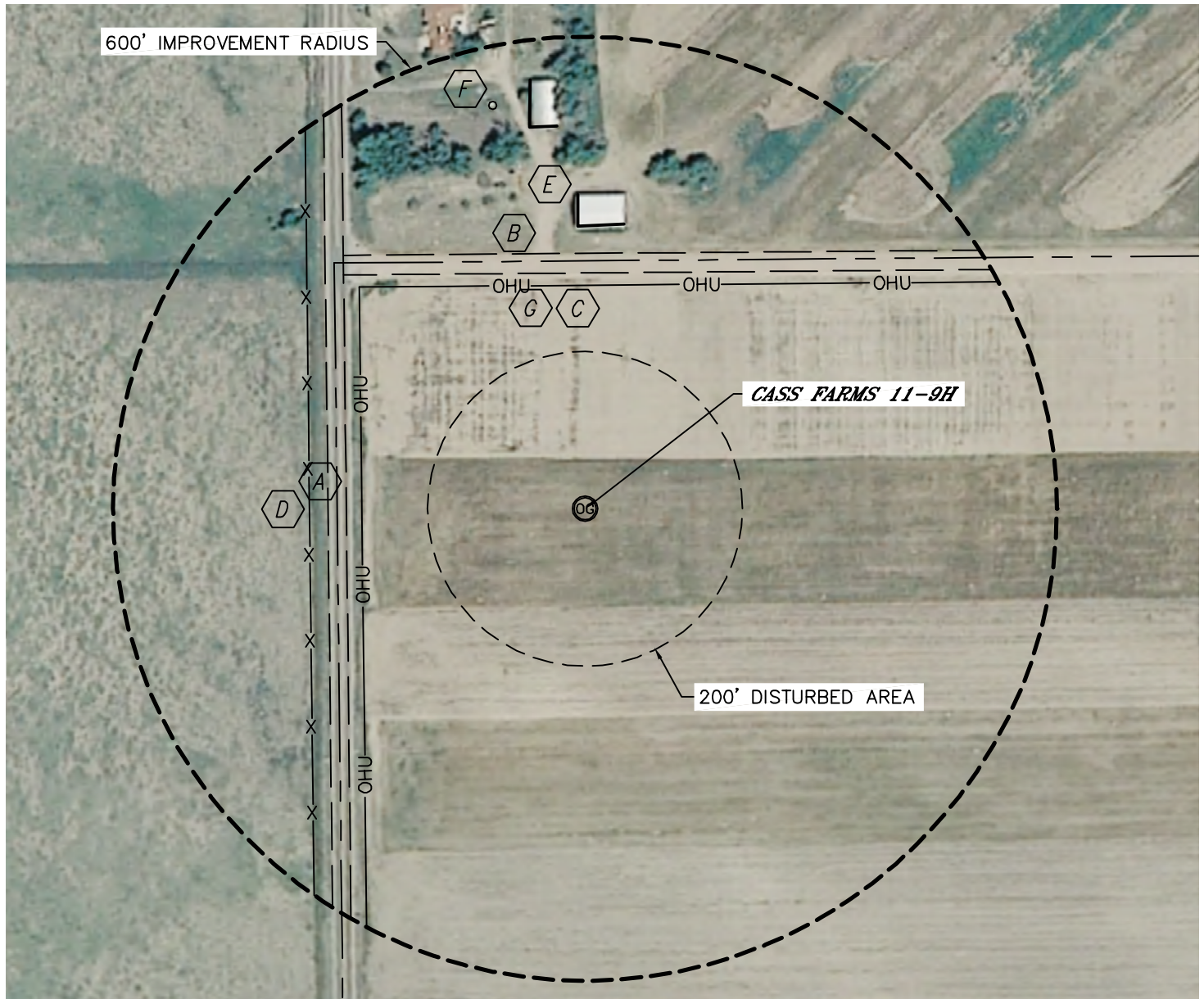
1635 Foxtrail Drive, Suite 325

Loveland, CO 80538

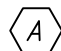

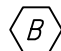

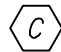


# LOCATION DRAWING

CASS FARMS 11-9H

SECTION: 9  
TOWNSHIP: 7N  
RANGE: 62W



## IMPROVEMENTS:

- |   |                                 |  |  |
|---|---------------------------------|--|--|
|  A | HIGHWAY 392 303' W              |  F | WATER WELL 526' N                              |
|  B | COUNTY ROAD 84 300' N           |  G | BARROW DITCH 330' N, 295' N,<br>340' W, 295' W |
|  C | OVERHEAD UTILITY 283' N, 284' W |  |  |
|  D | FENCE 350' W                    |  |  |
|  E | BUILDING 360' N, 490' N         |  |  |



NEAREST: BUILDING 360' N, PUBLIC ROAD 300' N,  
ABOVE GROUND UTILITY 283' N, RAILROAD (ABANDONED) 2800' W, PROPERTY LINE 315' N, 315' W