
XTO ENERGY INC EBUSINESS

Zellitti 34-9 34-4

La Plata County , Colorado

Cement Production Casing

10-Oct-2010

Job Site Documents

The Road to Excellence Starts with Safety

Sold To #: 353810	Ship To #: 2811331	Quote #:	Sales Order #: 7693050
Customer: XTO ENERGY INC EBUSINESS		Customer Rep:	
Well Name: Zellitti 34-9	Well #: 34-4	API/UWI #:	
Field:	City (SAP): IGNACIO	County/Parish: La Plata	State: Colorado
Legal Description: Section 10 Township 30N Range 13W			
Contractor: AZTEC WELL SERVICE		Rig/Platform Name/Num: AWS 507	
Job Purpose: Cement Production Casing			
Well Type: Development Well		Job Type: Cement Production Casing	
Sales Person: MASON, KYLE		Srv Supervisor: RICHESIN, ANTHONY	MBU ID Emp #: 412961

Job Personnel

HES Emp Name	Exp Hrs	Emp #	HES Emp Name	Exp Hrs	Emp #	HES Emp Name	Exp Hrs	Emp #
AXT, STEPHEN Gary	7.5	434802	BEGAY, LYDELL James	7.5	479804	LAMBSON, NATHANIEL A	7.5	343100
PONDER, THOMAS Lynn	7.5	427112	RICHESIN, ANTHONY Ray	7.5	412961			

Equipment

HES Unit #	Distance-1 way	HES Unit #	Distance-1 way	HES Unit #	Distance-1 way	HES Unit #	Distance-1 way
10025024	66.5 mile	10025031	66.5 mile	10829467	66.5 mile	10871245	66.5 MILE

Job Hours

Date	On Location Hours	Operating Hours	Date	On Location Hours	Operating Hours	Date	On Location Hours	Operating Hours
10/9/10	3	1.5	10/10/10	2	.5			
TOTAL			Total is the sum of each column separately					

Job

Job Times

Formation Name	Top	Bottom	Called Out	Date	Time	Time Zone
Formation Depth (MD)			On Location	09 - Oct - 2010	18:30	MST
Form Type	BHST		Job Started	09 - Oct - 2010	22:00	MST
Job depth MD	3689. ft	Job Depth TVD	3689. ft	Job Started	09 - Oct - 2010	22:47
Water Depth		Wk Ht Above Floor	2. ft	Job Completed	10 - Oct - 2010	00:22
Perforation Depth (MD)	From	To	Departed Loc	10 - Oct - 2010	02:00	MST

Well Data

Description	New / Used	Max pressure psig	Size in	ID in	Weight lbm/ft	Thread	Grade	Top MD ft	Bottom MD ft	Top TVD ft	Bottom TVD ft
7 7/8" Open Hole				7.875				500.	3678.		
5 1/2" Production Casing	Unknown		5.5	4.95	15.5		J-55	.	3678.	.	
8 5/8" Surface Casing	Unknown		8.625	8.097	24.		J-55	.	500.		

Sales/Rental/3rd Party (HES)

Description	Qty	Qty uom	Depth	Supplier
PLUG,CMTG,TOP,5 1/2,HWE,4.38 MIN/5.09 MA	1	EA		
SUGAR, GRANULATED, IMPERIAL	150	LB		

Tools and Accessories

Type	Size	Qty	Make	Depth	Type	Size	Qty	Make	Depth	Type	Size	Qty	Make
Guide Shoe					Packer					Top Plug	5.5	1	HES
Float Shoe					Bridge Plug					Bottom Plug			
Float Collar					Retainer					SSR plug set			
Insert Float										Plug Container			
Stage Tool										Centralizers			

Miscellaneous Materials												
Gelling Agt		Conc		Surfactant		Conc		Acid Type		Qty		Conc %
Treatment Fld		Conc		Inhibitor		Conc		Sand Type		Size		Qty
Fluid Data												
Stage/Plug #: 1												
Fluid #	Stage Type	Fluid Name			Qty	Qty uom	Mixing Density lbm/gal	Yield ft ³ /sk	Mix Fluid Gal/sk	Rate bbl/min	Total Mix Fluid Gal/sk	
1	Spacer				10.00	bbl	8.33	.0	.0	.0		
2	MUD FLUSH	MUD FLUSH - ZI - SBM (13383)			20.00	bbl	8.4	.0	.0	.0		
3	Spacer				5.00	bbl	8.33	.0	.0	.0		
4	LEAD CEMENT	PRB-2 - SBM (321500)			320.0	sacks	12.3	2.36	12.95		12.95	
	5 lbm	GILSONITE, BULK (100003700)										
	0.125 lbm	POLY-E-FLAKE (101216940)										
	0.3 %	FE-2 (100001615)										
	0.3 %	D-AIR 3000 (101007446)										
	12.95 Gal	FRESH WATER										
5	Tail Cement	PRB-2 - SBM (321500)			100.0	sacks	13.5	1.81	8.85		8.85	
	5 lbm	GILSONITE, BULK (100003700)										
	0.125 lbm	POLY-E-FLAKE (101216940)										
	0.3 %	FE-2 (100001615)										
	0.3 %	D-AIR 3000 (101007446)										
	8.85 Gal	FRESH WATER										
6	Displacement					bbl	.			.0		
Calculated Values			Pressures			Volumes						
Displacement	84.6	Shut In: Instant		0		Lost Returns		Cement Slurry		166.7	Pad	
Top Of Cement	SURFACE	5 Min				Cement Returns		25	Actual Displacement		85	Treatment
Frac Gradient		15 Min				Spacers		35	Load and Breakdown			Total Job
Rates												
Circulating	2	Mixing		5.5		Displacement		4		Avg. Job		4
Cement Left In Pipe	Amount	39.48 ft	Reason	Shoe Joint								
Frac Ring # 1 @	ID		Frac ring # 2 @	ID		Frac Ring # 3 @	ID		Frac Ring # 4 @	ID		
The Information Stated Herein Is Correct					Customer Representative Signature							

The Road to Excellence Starts with Safety

Sold To #: 353810	Ship To #: 2811331	Quote #:	Sales Order #: 7693050
Customer: XTO ENERGY INC EBUSINESS		Customer Rep:	
Well Name: Zellitti 34-9	Well #: 34-4	API/UWI #:	
Field:	City (SAP): IGNACIO	County/Parish: La Plata	State: Colorado
Legal Description: Section 10 Township 30N Range 13W			
Lat:		Long:	
Contractor: AZTEC WELL SERVICE		Rig/Platform Name/Num: AWS 507	
Job Purpose: Cement Production Casing			Ticket Amount:
Well Type: Development Well		Job Type: Cement Production Casing	
Sales Person: MASON, KYLE		Srv Supervisor: RICHESIN, ANTHONY MBU ID Emp #: 412961	

Activity Description	Date/Time	Cht #	Rate bbl/min	Volume bbl		Pressure psig		Comments
				Stage	Total	Tubing	Casing	
Call Out	10/09/2010 18:30							GRAND JUNCTION CALLED CREW AT 0930 12/18/09
Safety Meeting - Service Center or other Site	10/09/2010 19:30							SAFETY MEETING INVOLVING THE ENTIRE CMT CREW
Arrive At Loc	10/09/2010 21:00							1- F-450, 1- ELITE PUMP TRUCK, 2- 660 BULK TRUCK 10025031 WITH 320 SACKS OF PRB-2 5 LBM GILSONITE .125 LBM POLY-E-FLAKE .3% FE-2 .3% D-AIR 3000 // 1002504 WITH 100 SACKS TAIL PRB-2 SAME AS LEAD
Assessment Of Location Safety Meeting	10/09/2010 21:15							ASSESSMENT OF LOCATION INVOLVING THE ENTIRE CMT CREW
Pre-Rig Up Safety Meeting	10/09/2010 22:00							SAFETY MEETING INVOLVING THE ENTIRE CMT CREW
Rig-Up Equipment	10/09/2010 22:10							
Pre-Job Safety Meeting	10/09/2010 22:30							SAFETY MEETING INVOLVING EVERYONE ON LOCATION
Start Job	10/09/2010 22:44							
Test Lines	10/09/2010 22:48							TEST TO 3736 PSI HELD 2 MIN
Pump Spacer 1	10/09/2010 22:50		3.5	10	10		317.0	10 BBL FRESH WATER

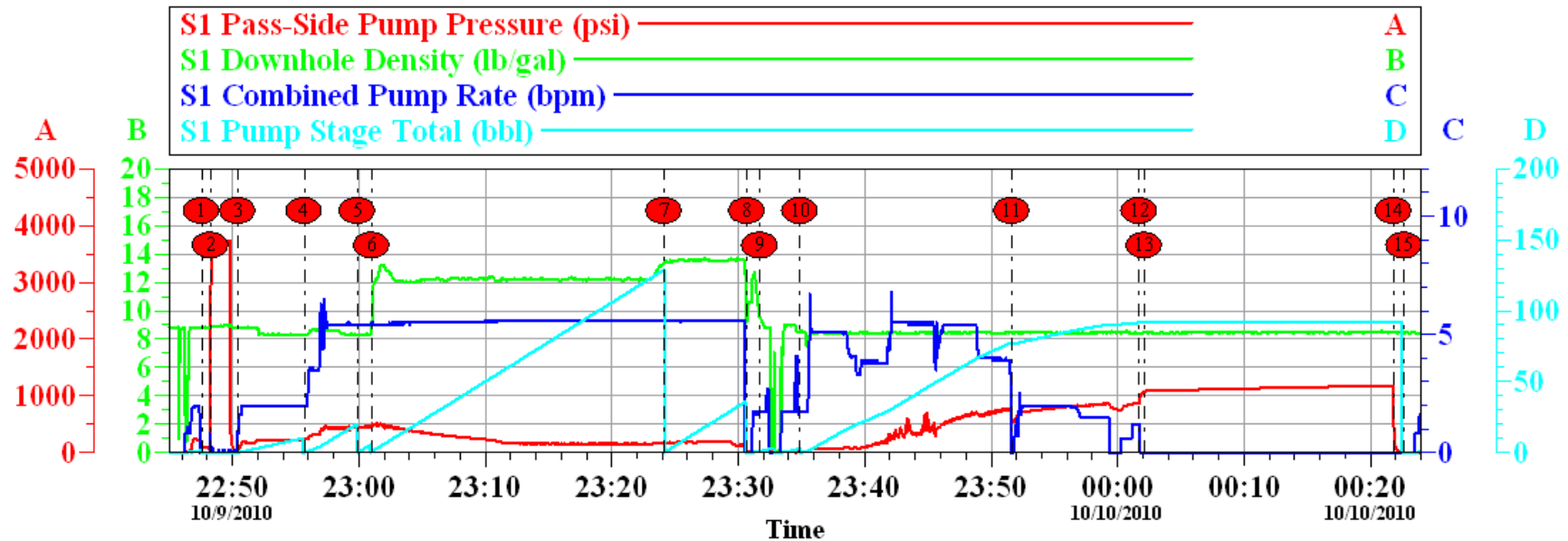
Activity Description	Date/Time	Cht #	Rate bbl/min	Volume bbl		Pressure psig		Comments
				Stage	Total	Tubing	Casing	
Pump Spacer 1	10/09/2010 22:55		5.5	20	20		230.0	20 BBL MUD FLUSH
Pump Spacer 1	10/09/2010 22:59		5.5	5	5		300.0	5 BBL FRESH WATER
Pump Lead Cement	10/09/2010 23:01		5.5	134.5	134.5		460.0	320 SACKS = @ 12.3# YIELD 2.36 GAL PER SACK 12.95 = 134.5 BBL
Pump Tail Cement	10/09/2010 23:24		5.5	32.2	32.2		190.0	100 SACKS = @ 13.5# YIELD 1.81 GAL PER SACK 8.85 = 32.2 BBL
Shutdown	10/09/2010 23:30							DROP TOP PLUG
Drop Top Plug	10/09/2010 23:31							PLUG LEFT THE PLUG CONTAINER
Clean Lines	10/09/2010 23:32							SHUTDOWN AND WASH PUMPS AND LINES BEFORE DISPLACEMENT
Pump Displacement	10/09/2010 23:34		5	75	75		400.0	FRESH WATER DISPLACEMENT CALCULATED 84.6 BBL FRESH WATER
Slow Rate	10/09/2010 23:51		2	10	10		800.0	SLOW RATE 2 BBL MIN THE LAST 10 BBLS OF DISPLACEMENT TO LAND THE PLUG
Bump Plug	10/10/2010 00:01		1	85	85		1077.0	PLUG LANDED 860 PSI TO LAND TOOK PRESSUSER TO 1077 PSI
Pressure Test	10/10/2010 00:02							BUMPED PLUG AT 00:01 O'CLOCK WITH 1077 PSI HELD 20 MIN PER COMPANY REP
Check Floats	10/10/2010 00:21							FLOATS HELD 1/4 BBLN BACK TO TRUCK
End Job	10/10/2010 00:22							GOOD CIRCULATION THROUGHOUT THE ENTIRE CMT JOB, NO PIPE MOVEMENT,
Comment	10/10/2010 00:23							THANK YOU FOR USING HALLIBURTON, ANTHONY RICHESIN AND CREW
Pre-Rig Down Safety Meeting	10/10/2010 01:00							SAFETY MEETING INVOLVING THE ENTIRE CMT CREW

Cementing Job Log

Activity Description	Date/Time	Cht #	Rate bbl/ min	Volume bbl		Pressure psig		Comments
				Stage	Total	Tubing	Casing	
Rig-Down Equipment	10/10/2010 01:10							
Safety Meeting - Departing Location	10/10/2010 02:00							SAFETY MEETING INVOLVING THE ENTIRE CMT CREW

XTO

ZELLITTI 34-9 WELL# 34-4



Local Event Log

Maximum			SPPP	Maximum			SPPP
1	START JOB	10/9/2010 22:47:34	2864	2	TEST LINES	10/9/2010 22:48:17	3759
3	WATER	10/9/2010 22:50:27	232.0	4	MUD FLUSH	10/9/2010 22:55:41	468.0
5	WATER	10/9/2010 22:59:53	477.0	6	LEAD CEMENT	10/9/2010 23:01:01	518.0
7	TAIL CEMENT	10/9/2010 23:24:08	191.0	8	SHUT DOWN	10/9/2010 23:30:42	37.00
9	DROP PLUG	10/9/2010 23:31:43	26.00	10	DISPLACEMENT	10/9/2010 23:34:54	785.0
11	SLOW RATE	10/9/2010 23:51:39	876.6	12	BUMP PLUG	10/10/2010 00:01:42	1077
13	HOLD PRESSURE ON CASING	10/10/2010 00:02:07	1178	14	CHECK FLOATS	10/10/2010 00:21:50	853.0
15	END JOB	10/10/2010 00:22:39	9.000				

Customer: XTO
Well Description: ZELLITTI 34-9 WELL# 34-4
Customer Rep: MARK NIETZEL

Job Date: 09-Oct-2010
Job type: PRODUCTION 5 1/2"
Service Supervisor: ANTHONY RICHESIN

Sales Order #: 7693050
ADC Used: YES
Operator/ Pump: THOMAS PONDER

OptiCem v6.4.0
10-Oct-10 00:33