

---

**XTO ENERGY INC EBUSINESS**

---

**Zellitti 34-9 34-4**


**La Plata County , Colorado**

**Cement Surface Casing**

**Job Site Documents**

The Road to Excellence Starts with Safety

Sold To #: 353810		Ship To #: 353810		Quote #:		Sales Order #: 7679815							
Customer: XTO ENERGY INC EBUSINESS				Customer Rep: Elrod, Dennis									
Well Name: Zellitti 34-9			Well #: 34-4			API/UWI #:							
Field:		City (SAP): FORT WORTH County/Parish: San Juan				State: New Mexico							
Legal Description: Section 10 Township 30N Range 13W													
Contractor: AWS			Rig/Platform Name/Num: AWS507										
Job Purpose: Cement Surface Casing													
Well Type: Development Well					Job Type: Cement Surface Casing								
Sales Person: MASON, KYLE				Srcv Supervisor: ANDREWS, ANTHONY			MBU ID Emp #: 321604						
<b>Job Personnel</b>													
HES Emp Name		Exp Hrs	Emp #	HES Emp Name		Exp Hrs	Emp #	HES Emp Name		Exp Hrs	Emp #		
ANDREWS, ANTHONY Michael			321604	MARTIN, EHLER Dean			458474	SMITH, CHRISTOPHER Scott			452619		
<b>Equipment</b>													
HES Unit #	Distance-1 way		HES Unit #	Distance-1 way		HES Unit #	Distance-1 way		HES Unit #	Distance-1 way			
<b>Job Hours</b>													
Date	On Location Hours	Operating Hours	Date	On Location Hours	Operating Hours	Date	On Location Hours	Operating Hours					
10/3/10	5	0	10/4/10	4.5	3								
<b>TOTAL</b>						Total is the sum of each column separately							
<b>Job</b>						<b>Job Times</b>							
Formation Name						Date	Time	Time Zone					
Formation Depth (MD) Top		Bottom	Called Out			03 - Oct - 2010	12:20	MST					
Form Type		BHST	On Location			03 - Oct - 2010	19:00	MST					
Job depth MD		551. ft	Job Depth TVD			Job Started	04 - Oct - 2010	02:29	MST				
Water Depth			Wk Ht Above Floor			4. ft	Job Completed	04 - Oct - 2010	03:12	MST			
Perforation Depth (MD) From			To			Departed Loc	04 - Oct - 2010	04:30	MST				
<b>Well Data</b>													
Description	New / Used	Max pressure psig	Size in	ID in	Weight lbm/ft	Thread	Grade	Top MD ft	Bottom MD ft	Top TVD ft	Bottom TVD ft		
12 1/4" Open Hole				12.25					500.				
8 5/8" Surface Casing	Unknown		8.625	8.097	24.		J-55		500.				
<b>Sales/Rental/3<sup>rd</sup> Party (HES)</b>													
Description						Qty	Qty uom	Depth	Supplier				
SUGAR, GRANULATED, IMPERIAL						100	LB						
PLUG,CMTG, TOP, 8 5/8, HWE, 7.20 MIN/8.09 MA						1	EA						
<b>Tools and Accessories</b>													
Type	Size	Qty	Make	Depth	Type	Size	Qty	Make	Depth	Type	Size	Qty	Make
Guide Shoe					Packer					Top Plug			
Float Shoe					Bridge Plug					Bottom Plug			
Float Collar					Retainer					SSR plug set			
Insert Float										Plug Container			
Stage Tool										Centralizers			
<b>Miscellaneous Materials</b>													
Gelling Agt		Conc		Surfactant		Conc		Acid Type		Qty	Conc	%	
Treatment Fld		Conc		Inhibitor		Conc		Sand Type		Size	Qty		

Fluid Data									
Stage/Plug #: 1									
Fluid #	Stage Type	Fluid Name	Qty	Qty uom	Mixing Density lbm/gal	Yield ft <sup>3</sup> /sk	Mix Fluid Gal/sk	Rate bbl/min	Total Mix Fluid Gal/sk
1	Spacer		20	bbl	8.33	.0	.0	.0	
2	Primary Cement	CMT - PREMIUM - CLASS G, 94 LB SK (100003685)	370	sacks	15.8	1.17	5.0		5.0
	94 lbm	CMT - PREMIUM - CLASS G REG OR TYPE V, BULK (100003685)							
	0.125 lbm	POLY-E-FLAKE (101216940)							
	2 %	CALCIUM CHLORIDE - HI TEST PELLET (100005053)							
	4.998 Gal	FRESH WATER							
3	Displacement		31.9	bbl	8.33	.0	.0	.0	
Calculated Values		Pressures			Volumes				
Displacement	31.9	Shut In: Instant		Lost Returns	N	Cement Slurry	77.1	Pad	
Top Of Cement	SURFACE	5 Min		Cement Returns	21	Actual Displacement	31.9	Treatment	
Frac Gradient		15 Min		Spacers	20	Load and Breakdown		Total Job	129
Rates									
Circulating	RIG	Mixing	5	Displacement	5	Avg. Job	5		
Cement Left In Pipe	Amount	45 ft	Reason	Shoe Joint					
Frac Ring # 1 @	ID	Frac ring # 2 @	ID	Frac Ring # 3 @	ID	Frac Ring # 4 @	ID		
The Information Stated Herein Is Correct				Customer Representative Signature					
									

*The Road to Excellence Starts with Safety*

Sold To #: 353810		Ship To #: 353810		Quote #:		Sales Order #: 7679815	
Customer: XTO ENERGY INC EBUSINESS				Customer Rep: Elrod, Dennis			
Well Name: Zellitti 34-9			Well #: 34-4		API/UWI #:		
Field:		City (SAP): FORT WORTH		County/Parish: San Juan		State: New Mexico	
Legal Description: Section 10 Township 30N Range 13W							
Lat:				Long:			
Contractor: AWS			Rig/Platform Name/Num: AWS507				
Job Purpose: Cement Surface Casing					Ticket Amount:		
Well Type: Development Well			Job Type: Cement Surface Casing				
Sales Person: MASON, KYLE			Srcv Supervisor: ANDREWS, ANTHONY			MBU ID Emp #: 321604	

Activity Description	Date/Time	Cht #	Rate bbl/min	Volume bbl		Pressure psig		Comments
				Stage	Total	Tubing	Casing	
Call Out	10/03/2010 12:20							
Pre-Convoy Safety Meeting	10/03/2010 13:30							
Crew Leave Yard	10/03/2010 14:00							
Arrive At Loc	10/03/2010 15:30							ARRIVED ON LOCATION, CUSTOMER HAD CALLED AND REQUESTED THAT WE ARRIVE ON LOCATION @ 1900, CREW WAS ON STANDBY OFF LOCATION
Assessment Of Location Safety Meeting	10/04/2010 00:30							
Other	10/04/2010 00:45							SPOT EQUIPMENT
Pre-Rig Up Safety Meeting	10/04/2010 00:55							
Rig-Up Equipment	10/04/2010 01:00							
Pre-Job Safety Meeting	10/04/2010 02:00							
Start Job	10/04/2010 02:29							TD: 551 TP: 547.06 NO SHOE JOINT (NO FLOAT COLLAR) MW: 9.8 ABOUT 100 VISC. 8 5/8" 24#/FT CSG 12 1/4" OH
Test Lines	10/04/2010 02:30							1500 PSI TEST

## Cementing Job Log

Activity Description	Date/Time	Cht #	Rate bbl/ min	Volume bbl		Pressure psig		Comments
				Stage	Total	Tubing	Casing	
Crew Leave Location	10/04/2010 04:30							THANK YOU FOR CHOOSING HALLIBURTON CEMENTING OF FARMINGTON, NM ANTHONY ANDREWS AND CREW

Sold To # : 353810

Ship To # : 353810

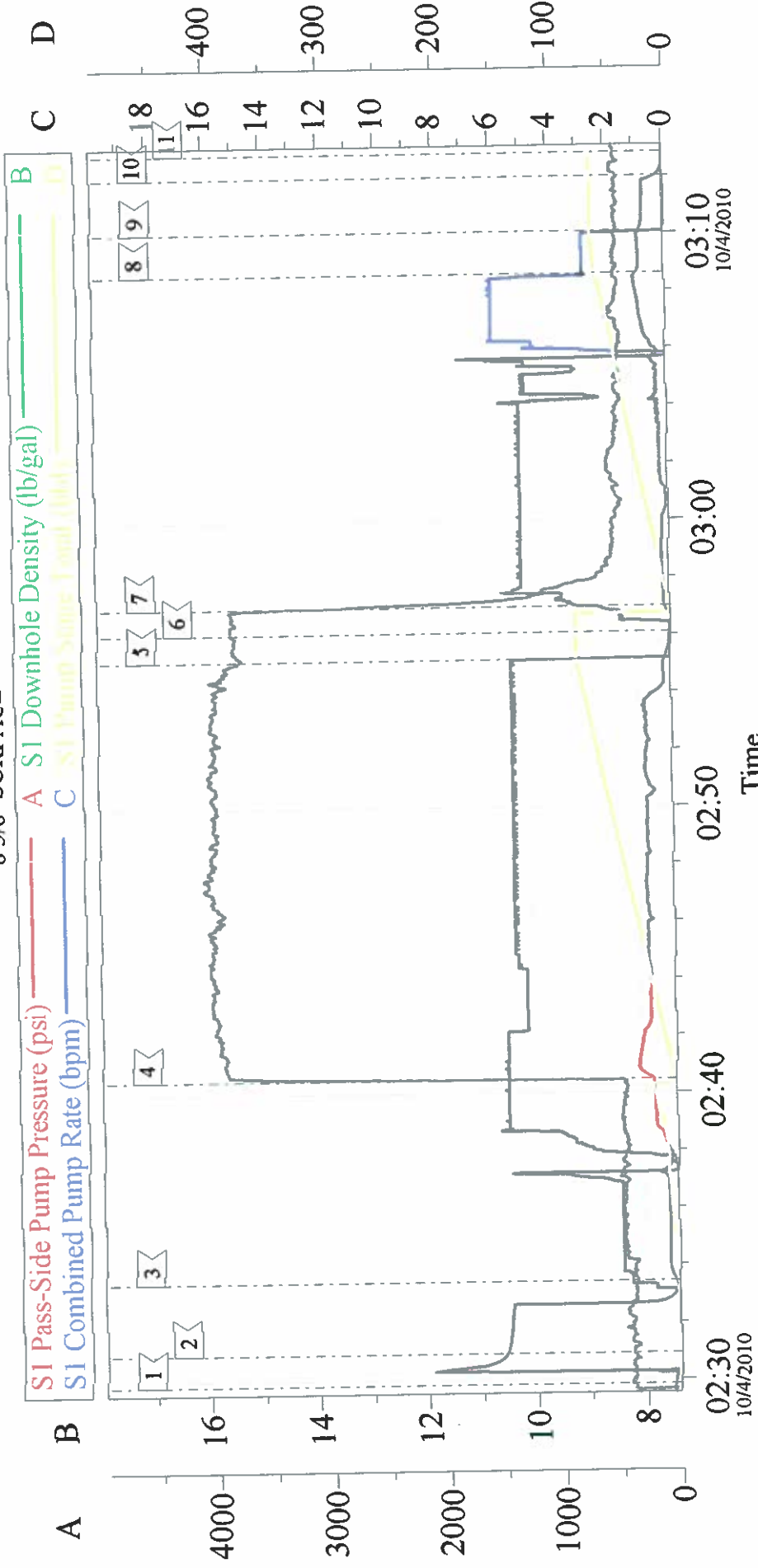
Quote # :

Sales Order # : 7679815

SUMMIT Version: 7.20.130

Mondav. October 04. 2010 03:46:00

**AWS 507 - XTO ENERGY**  
**8 5/8" SURFACE**



Local Event Log			
Intersection	SPPP	Intersection	SPPP
1 START JOB	02:29:51	2 TEST LINES	02:30:55
3 PUMP H2O SPACER	02:33:25	4 PUMP CEMENT	02:40:27
5 SHUTDOWN	02:55:08	6 DROP PLUG	02:56:05
7 PUMP DISPLACEMENT	02:56:59	8 SLOW RATE	03:08:37
9 SHUTDOWN/ SHUT IN WELL	03:10:05	10 RELEASE TRUCK PRESSURE	03:12:01
11 END JOB	03:12:50		51.90
			-3.000

Customer: XTO	Job Date: 04-Oct-2010	Sales Order #: 7679815
Well #: ZELLITTI 34-4	Job Type: SURFACE	ADC Used: YES
Customer Rep: DENNIS ELROD	Pump Truck: ELITE 8/ CHRIS SMITH	Supervisor: ANTHONY ANDREWS