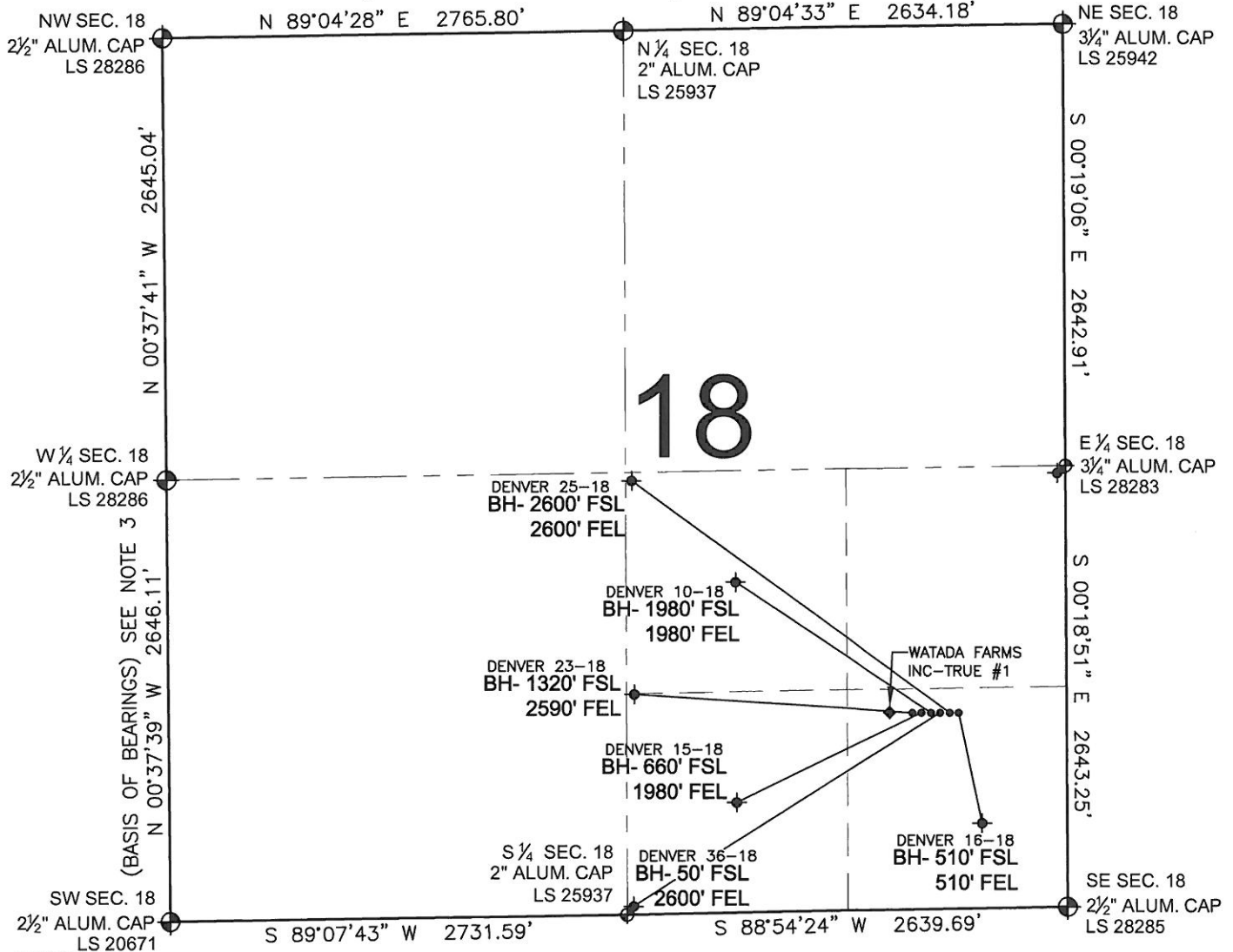


PAD DRAWING - DENVER 6 PAD

SECTION 18, TOWNSHIP 1 NORTH, RANGE 66 WEST, 6TH P.M.



LEGEND

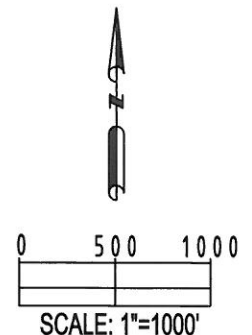
- ⊕ = EXISTING MONUMENT ⊕ = BOTTOM HOLE BH= BOTTOM HOLE
 ● = PROPOSED WELL ⊕ = EXISTING WELL

NOTES:

1. THIS SURVEY WAS DONE BY GPS METHODS AND CONFORMS TO THE MINIMUM STANDARDS SET BY THE C.O.G.C.C., RULE NO. 215
2. ELEVATIONS SHOWN AT THE WELL HEAD, AS WELL AS HORIZONTAL CONTROL, ARE BASED ON GPS-RTK VALUES DERIVED FROM DOING 2-HOUR STATIC GPS SESSIONS AND REDUCTIONS USING O.P.U.S. SOLUTIONS.
VERTICAL = NAVD88; HORIZONTAL = NAD83/92
3. THE BEARINGS SHOWN HEREON ARE BASED ON GPS OBSERVATIONS BETWEEN THE MONUMENTS SHOWN HEREON AS FOUND ON THE FIELD DATE BELOW.
4. DISTANCES SHOWN ARE AT GROUND LEVEL, AS MEASURED IN THE FIELD, WITH TIES TO WELLS MEASURED AT A PERPENDICULAR TO SECTION LINES.

NOTES:

- DENVER 23-18 TO BE AT 1177' FSL, 836' FEL.
 BOTTOM HOLE AT 1320' FSL & 2590' FEL.
 DENVER 15-18 TO BE AT 1177' FSL, 826' FEL.
 BOTTOM HOLE AT 660' FSL & 1980' FEL.
 DENVER 10-18 TO BE AT 1177' FSL, 816' FEL.
 BOTTOM HOLE AT 1980' FSL & 1980' FEL.
 DENVER 36-18 TO BE AT 1177' FSL, 806' FEL.
 BOTTOM HOLE AT 50' FSL & 2600' FEL.
 DENVER 25-18 TO BE AT 1177' FSL, 796' FEL.
 BOTTOM HOLE AT 2600' FSL & 2600' FEL.
 DENVER 16-18 TO BE AT 1177' FSL, 786' FEL.
 BOTTOM HOLE AT 510' FSL & 510' FEL.
 WATADA FARMS INC-TRUE #1 IS 1177' FSL, 986' FEL.



REVISIONS

| INITIAL | DATE |
|---------|----------|
| SMF | 05-26-10 |
| SMF | 09-27-10 |

PREPARED BY:

PFS

Petroleum Field Services, LLC
1801 W. 13th Ave.
Denver, CO 80204



KERR-MCGEE OIL & GAS ONSHORE LP

FIELD DATE:
04-08-10

DRAWING DATE:
04-09-10

BY:
SMF

PAD NAME:

DENVER 6 PAD

SURFACE LOCATION:

WELD COUNTY, COLORADO
SE 1/4 SE 1/4, SEC. 18, T1N, R66W