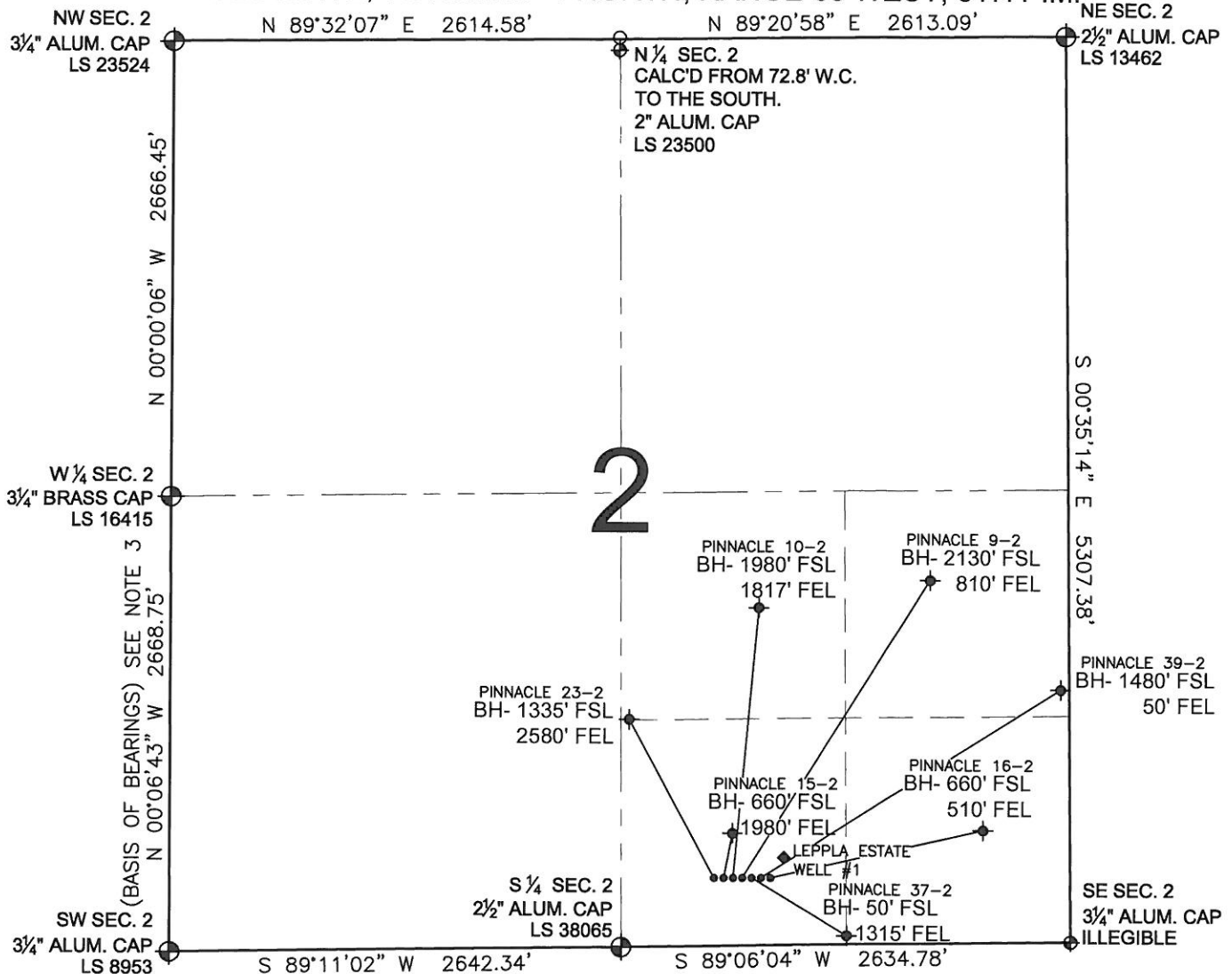


PAD DRAWING - PINNACLE 7 PAD

SECTION 2, TOWNSHIP 1 NORTH, RANGE 68 WEST, 6TH P.M.



LEGEND

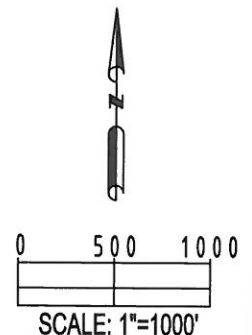
- = EXISTING MONUMENT
- ◆ = BOTTOM HOLE
- BH= BOTTOM HOLE
- = PROPOSED WELL
- ◆ = EXISTING WELL



NOTES:

- THIS SURVEY WAS DONE BY GPS METHODS AND CONFORMS TO THE MINIMUM STANDARDS SET BY THE C.O.G.C.C., RULE NO. 215
- ELEVATIONS SHOWN AT THE WELL HEAD, AS WELL AS HORIZONTAL CONTROL, ARE BASED ON GPS-RTK VALUES DERIVED FROM DOING 2-HOUR STATIC GPS SESSIONS AND REDUCTIONS USING O.P.U.S. SOLUTIONS.
VERTICAL = NAVD88; HORIZONTAL = NAD83/92
- THE BEARINGS SHOWN HEREON ARE BASED ON GPS OBSERVATIONS BETWEEN THE MONUMENTS SHOWN HEREON AS FOUND ON THE FIELD DATE BELOW.
- DISTANCES SHOWN ARE AT GROUND LEVEL, AS MEASURED IN THE FIELD, WITH TIES TO WELLS MEASURED AT A PERPENDICULAR TO SECTION LINES.

NOTES:

- PINNACLE 23-2 TO BE AT 386' FSL, 2018' FEL. BOTTOM HOLE AT 1335' FSL & 2580' FEL.
- PINNACLE 15-2 TO BE AT 386' FSL, 2008' FEL. BOTTOM HOLE AT 660' FSL & 1980' FEL.
- PINNACLE 10-2 TO BE AT 386' FSL, 1998' FEL. BOTTOM HOLE AT 1980' FSL & 1817' FEL.
- PINNACLE 9-2 TO BE AT 386' FSL, 1988' FEL. BOTTOM HOLE AT 2130' FSL & 810' FEL.
- PINNACLE 37-2 TO BE AT 386' FSL, 1978' FEL. BOTTOM HOLE AT 50' FSL & 1315' FEL.
- PINNACLE 39-2 TO BE AT 386' FSL, 1968' FEL. BOTTOM HOLE AT 1480' FSL & 50' FEL.
- PINNACLE 16-2 TO BE AT 386' FSL, 1958' FEL. BOTTOM HOLE AT 660' FSL & 510' FEL.
- LEPPLA ESTATE WELL #1 IS 523' FSL & 1900' FEL



REVISIONS		PREPARED BY:	 Petroleum Field Services, LLC
INITIAL	DATE		
SMF	08-30-10	 1801 W. 13th Ave. Denver, CO 80204	
TJN	09-07-10		
SMF	09-16-10		

KERR-MCGEE OIL & GAS ONSHORE LP

FIELD DATE: 06-11-10	PAD NAME: PINNACLE 7 PAD
DRAWING DATE: 07-26-10	SURFACE LOCATION:
BY: SMF	WELD COUNTY, COLORADO SW 1/4 SE 1/4, SEC. 2, T1N, R68W