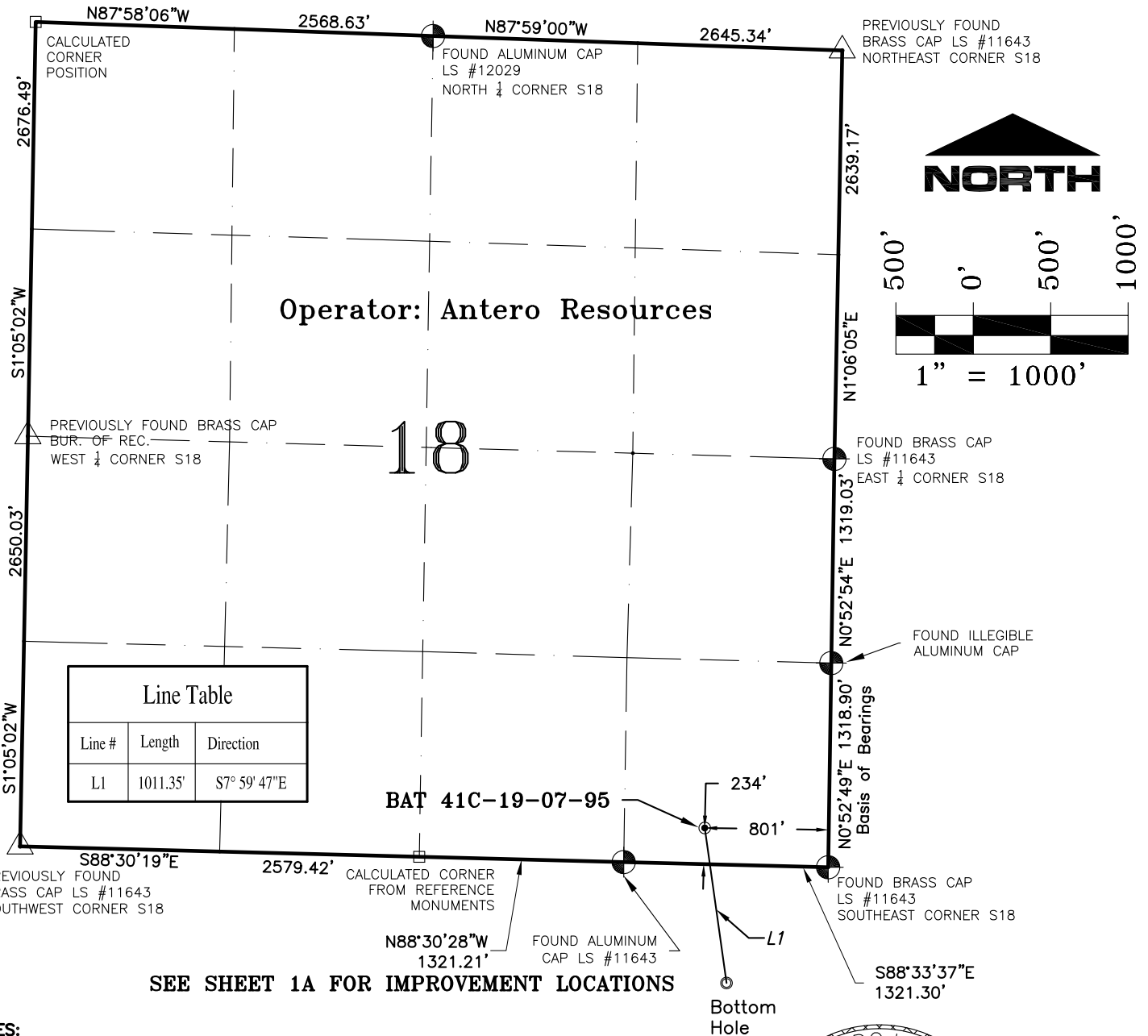


SECTION 18, T7S, R95W, 6th P.M.



Line Table		
Line #	Length	Direction
L1	1011.35'	S7° 59' 47"E

SEE SHEET 1A FOR IMPROVEMENT LOCATIONS

- NOTES:**
1. GEODETIC POSITIONS ARE SHOWN IN DECIMAL DEGREES.
 2. UNITS OF LINEAR MEASUREMENT: U.S. SURVEY FOOT
 3. ELEVATIONS ARE BASED ON GPS OBSERVATIONS USING GEOID 03, NAVD88.
 4. ALL SURFACE (SHL) AND BOTTOM (BHL) HOLE LOCATIONS ARE MEASURED AT 90° ANGLES FROM SECTION LINES.
 5. BASIS OF BEARING: N00°52'49"E BETWEEN FOUND MONUMENTS AS SHOWN HEREON.
 6. EXISTING GROUND ELEVATION: 5441'. PROPOSED PAD ELEVATION: 5441.2'.
 7. GPS OPERATOR: KYLE TESKY OBSERVED AN AVERAGE PDOP OF ≤ 3.0 FOR ALL SURVEY MEASUREMENTS DEPICTED ON THIS AND SUBSEQUENT SHEETS. ALL GPS OBSERVATIONS ARE IN COMPLIANCE WITH COGCC RULE NO. 215
 8. SURFACE USE: AGRICULTURAL LANDS
 9. USGS QUAD MAP: PARACHUTE

SURVEYORS STATEMENT:
 I, ELWOOD BARRY GILES, BEING A REGISTERED LAND SURVEYOR IN THE STATE OF COLORADO, DO HERBY CERTIFY THAT THIS PLAT REPRESENTS A SURVEY PERFORMED BY ME OR UNDER MY DIRECT SUPERVISION SEPTEMBER 17, 2010 AND IS TRUE TO THE BEST OF MY KNOWLEDGE AND BELIEF.

Elwood Barry Giles
 ELWOOD BARRY GILES
 COLORADO LS 38150

29 SEPT, 2010
 DATE

WELL No.	SECTION LINES TIES		NAD 83		NAD 27	
	FOOTAGES	FOOTAGES	LATITUDE	LONGITUDE	LATITUDE	LONGITUDE
BAT 41C-19-07-95						
SURFACE HOLE	234' FSL	801' FEL	39.431067°	108.033163°	39.431089°	108.032533°
BOTTOM HOLE	764' FNL	645' FEL	39.428330°	108.032567°	39.428352°	108.031937°

SGM INC.
 118 W. 6th Street, Suite 200
 Glenwood Springs, Colorado 81601
 (970) 945-1004 (FAX 945-5948)
 Meeker, Colorado (970) 878-5180

Scale: 1"=1000'

Sheet 1 of 11

BAT 41C-19-07-95

Well Location Plat for Antero Resources Well BAT 41C-19-07-95

SE 1/4 SE 1/4 Sect. 18, T. 7 S., R. 95 W., 6th P.M., Garfield County, CO

Job# 2006-479.026 Date: 9.29.2010 By: reb File: Ant.Mon.Rid_BM

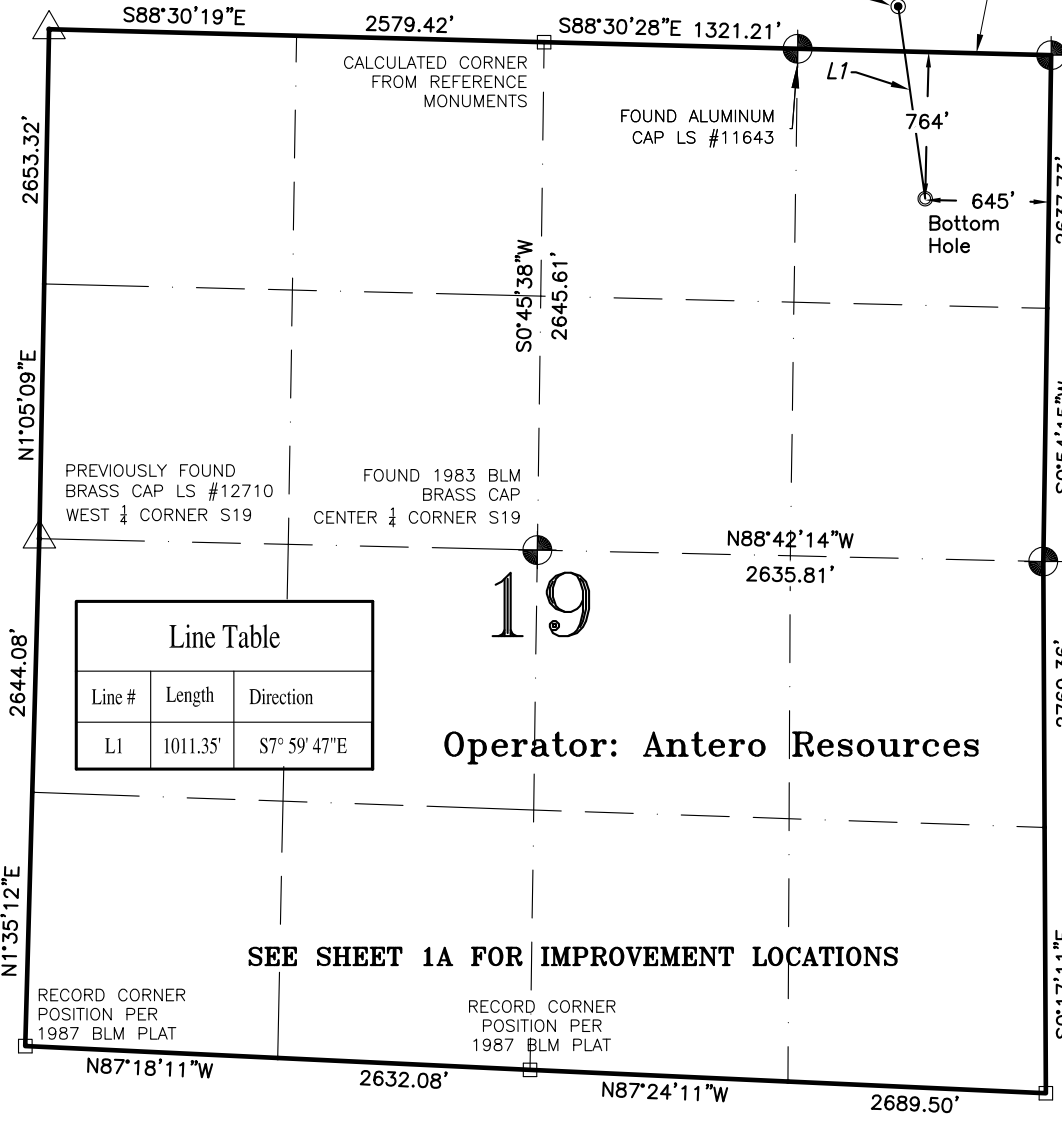
SECTION 19, T7S, R95W, 6th P.M.

PREVIOUSLY FOUND
BRASS CAP LS #11643
NORTHWEST CORNER S19

BAT 41C-19-07-95

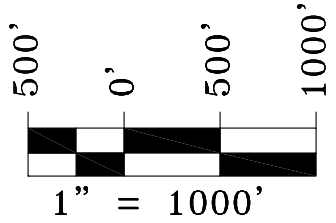
S88°33'37"E
1321.30'

FOUND BRASS CAP
LS #11643
NORTHEAST CORNER S19



Line Table		
Line #	Length	Direction
L1	1011.35'	S7° 59' 47"E

Operator: Antero Resources



SEE SHEET 1A FOR IMPROVEMENT LOCATIONS

NOTES:

1. GEODETIC POSITIONS ARE SHOWN IN DECIMAL DEGREES.
2. UNITS OF LINEAR MEASUREMENT: U.S. SURVEY FOOT
3. ELEVATIONS ARE BASED ON GPS OBSERVATIONS USING GEOID 03, NAVD88.
4. ALL SURFACE (SHL) AND BOTTOM (BHL) HOLE LOCATIONS ARE MEASURED AT 90° ANGLES FROM SECTION LINES.
5. BASIS OF BEARING: N00°52'49"E BETWEEN FOUND MONUMENTS AS SHOWN HEREON.
6. EXISTING GROUND ELEVATION: 5441'. PROPOSED PAD ELEVATION: 5441.2'.
7. GPS OPERATOR: KYLE TESKY OBSERVED AN AVERAGE PDOP OF ≤ 3.0 FOR ALL SURVEY MEASUREMENTS DEPICTED ON THIS AND SUBSEQUENT SHEETS. ALL GPS OBSERVATIONS ARE IN COMPLIANCE WITH COGCC RULE NO. 215
8. SURFACE USE: AGRICULTURAL LANDS
9. USGS QUAD MAP: PARACHUTE

SURVEYORS STATEMENT:

I, ELWOOD BARRY GILES, BEING A REGISTERED LAND SURVEYOR IN THE STATE OF COLORADO, DO HEREBY CERTIFY THAT THIS PLAT REPRESENTS A SURVEY PERFORMED BY ME OR UNDER MY DIRECT SUPERVISION SEPTEMBER 17, 2010 AND IS TRUE TO THE BEST OF MY KNOWLEDGE AND BELIEF.

Elwood Barry Giles 29 SEPT, 2010
ELWOOD BARRY GILES
COLORADO LS 38150 DATE

WELL No.	SECTION LINES TIES		NAD 83		NAD 27	
	FOOTAGES	FOOTAGES	LATITUDE	LONGITUDE	LATITUDE	LONGITUDE
BAT 41C-19-07-95	234' FSL	801' FEL	39.431067°	108.033163°	39.431089°	108.032533°
SURFACE HOLE	234' FSL	801' FEL	39.431067°	108.033163°	39.431089°	108.032533°
BOTTOM HOLE	764' FNL	645' FEL	39.428330°	108.032567°	39.428352°	108.031937°

	SGM INC. 118 W. 6th Street, Suite 200 Glenwood Springs, Colorado 81601 (970) 945-1004 (FAX 945-5948) Meeker, Colorado (970) 878-5180	Scale: 1"=1000'	Well Location Plat for Antero Resources Well BAT 41C-19-07-95 Bottom Hole NE 1/4 NE 1/4 Sect.19, T. 7 S., R. 95 W., 6th P.M., Garfield County, CO
		Sheet 1C of 11	
BAT 41C-19-07-95		Job# 2006-479.026 Date: 9.29.2010 By: reb File: Ant.Mon.Rid_BM	