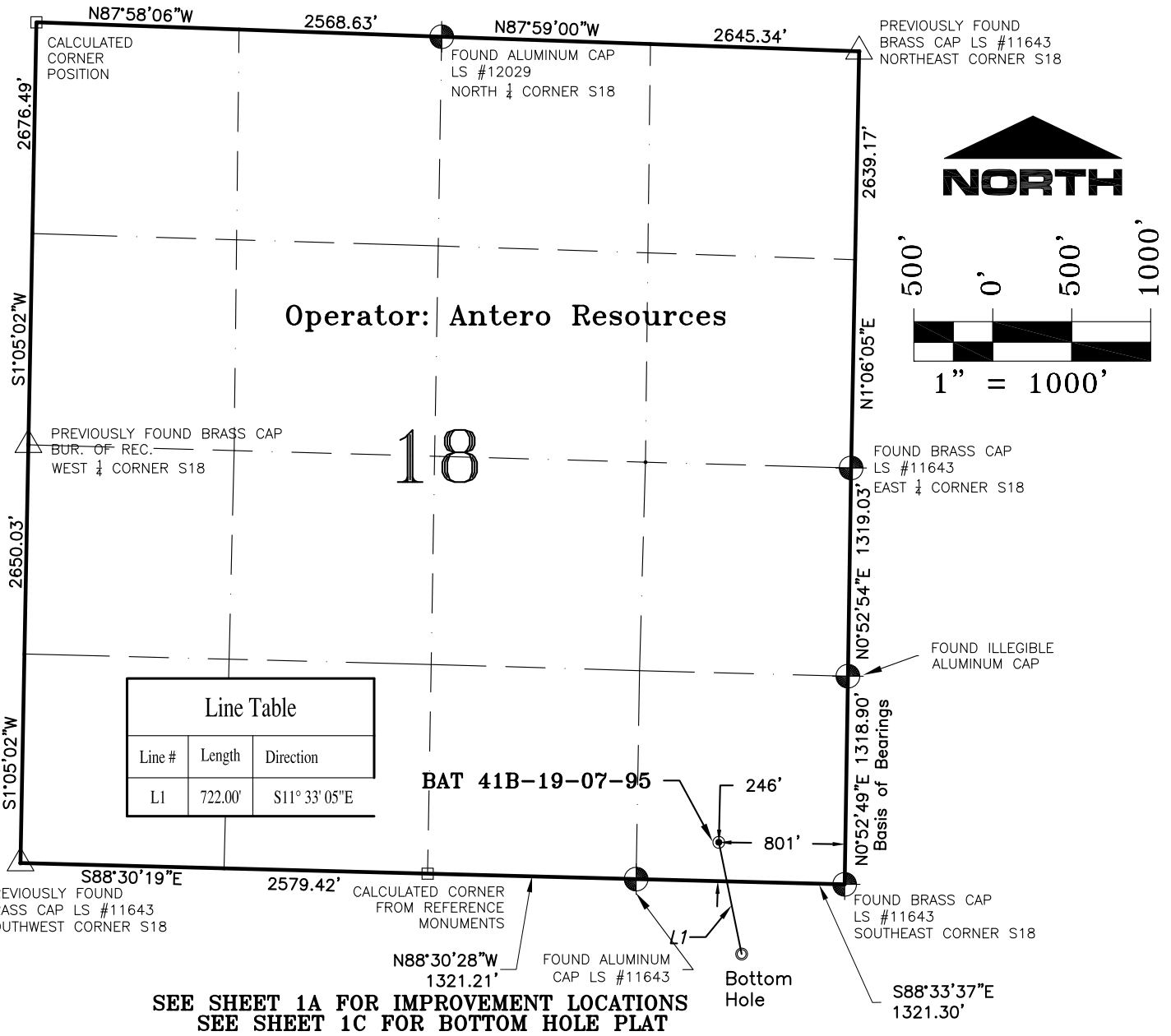
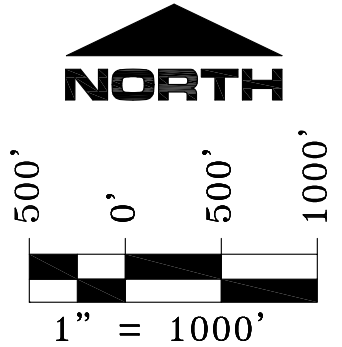


# SECTION 18, T7S, R95W, 6th P.M.



Line Table		
Line #	Length	Direction
L1	722.00'	S11° 33' 05\"E



**SEE SHEET 1A FOR IMPROVEMENT LOCATIONS**  
**SEE SHEET 1C FOR BOTTOM HOLE PLAT**

- NOTES:**
1. GEODETIC POSITIONS ARE SHOWN IN DECIMAL DEGREES.
  2. UNITS OF LINEAR MEASUREMENT: U.S. SURVEY FOOT
  3. ELEVATIONS ARE BASED ON GPS OBSERVATIONS USING GEOID 03, NAVD88.
  4. ALL SURFACE (SHL) AND BOTTOM (BHL) HOLE LOCATIONS ARE MEASURED AT 90° ANGLES FROM SECTION LINES.
  5. BASIS OF BEARING: N00°52'49\"E BETWEEN FOUND MONUMENTS AS SHOWN HEREON.
  6. EXISTING GROUND ELEVATION: 5441'. PROPOSED PAD ELEVATION: 5441.2'.
  7. GPS OPERATOR: KYLE TESKY OBSERVED AN AVERAGE PDOP OF ≤ 3.0 FOR ALL SURVEY MEASUREMENTS DEPICTED ON THIS AND SUBSEQUENT SHEETS. ALL GPS OBSERVATIONS ARE IN COMPLIANCE WITH COGCC RULE NO. 215
  8. SURFACE USE: AGRICULTURAL LANDS
  9. USGS QUAD MAP: PARACHUTE

**SURVEYORS STATEMENT:**  
 I, ELWOOD BARRY GILES, BEING A REGISTERED LAND SURVEYOR IN THE STATE OF COLORADO, DO HERBY CERTIFY THAT THIS PLAT REPRESENTS A SURVEY PERFORMED BY ME OR UNDER MY DIRECT SUPERVISION SEPTEMBER 17, 2010 AND IS TRUE TO THE BEST OF MY KNOWLEDGE AND BELIEF.

*Elwood Barry Giles* 29 SEPT, 2010  
 ELWOOD BARRY GILES  
 COLORADO LS 38150 DATE

WELL No.	SECTION LINES TIES		NAD 83		NAD 27	
	FOOTAGES	FOOTAGES	LATITUDE	LONGITUDE	LATITUDE	LONGITUDE
BAT 41B-19-07-95						
SURFACE HOLE	246' FSL	801' FEL	39.431101°	108.033164°	39.431123°	108.032535°
BOTTOM HOLE	457' FNL	646' FEL	39.429171°	108.032583°	39.429193°	108.031954°

	<b>SGM INC.</b> 118 W. 6th Street, Suite 200 Glenwood Springs, Colorado 81601 (970) 945-1004 (FAX 945-5948) Meeker, Colorado (970) 878-5180	Scale: 1"=1000'	Well Location Plat for Antero Resources Well BAT 41B-19-07-95 SE 1/4 SE 1/4 Sect. 18, T. 7 S., R. 95 W., 6th P.M., Garfield County, CO
		Sheet 1 of 11	
		BAT 41B-19-07-95	
		Job# 2006-479.026	Date: 9.29.2010
		By: reb	File: Ant.Mon.Rid_BM

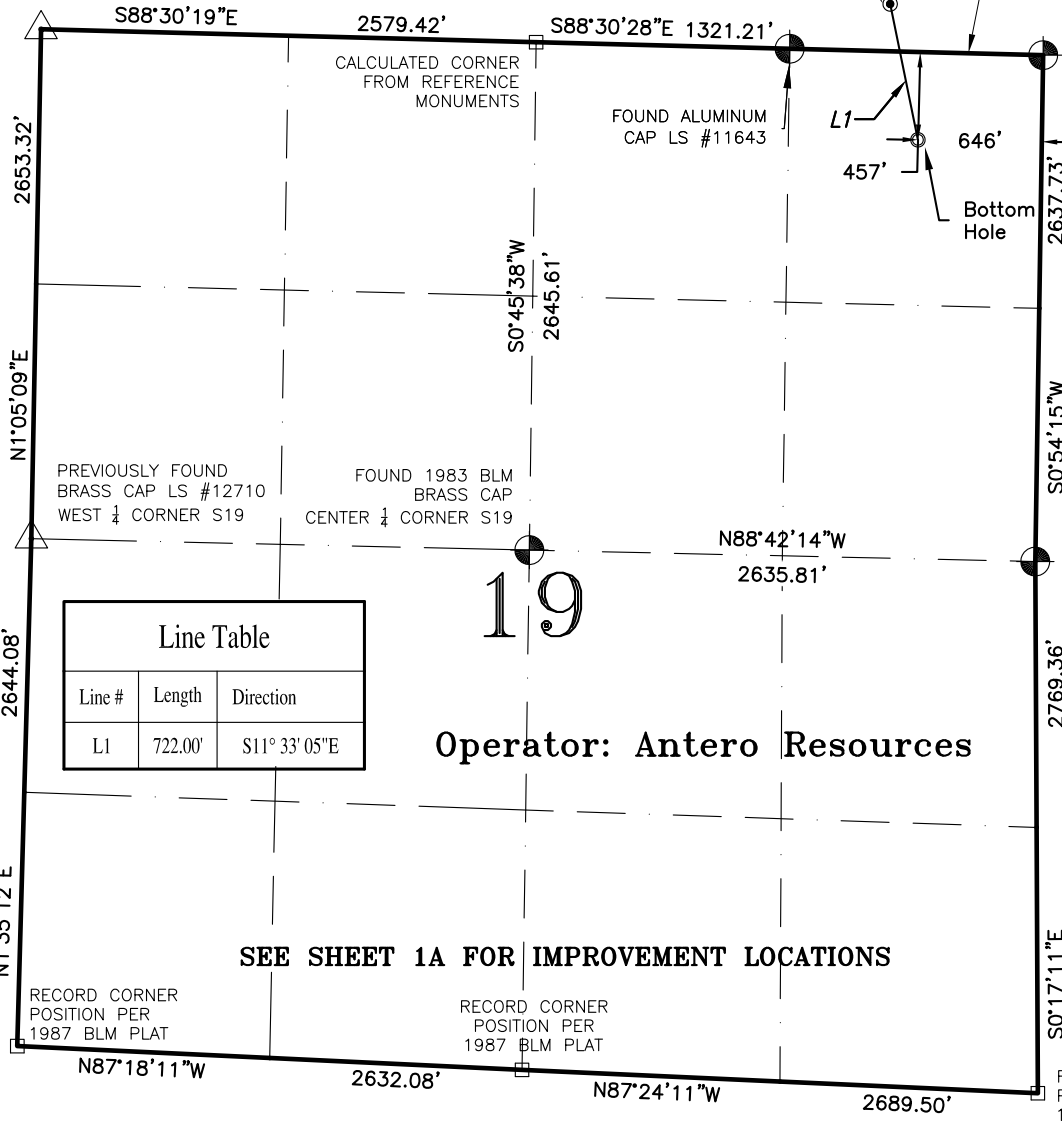
# SECTION 19, T7S, R95W, 6th P.M.

PREVIOUSLY FOUND  
BRASS CAP LS #11643  
NORTHWEST CORNER S19

BAT 41B-19-07-95

S88°33'37"E  
1321.30'

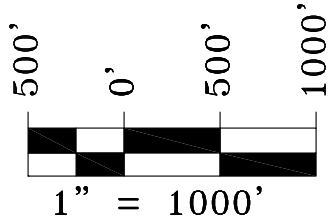
FOUND BRASS CAP  
LS #11643  
NORTHEAST CORNER S19



Line Table		
Line #	Length	Direction
L1	722.00'	S11° 33' 05" E

Operator: Antero Resources

SEE SHEET 1A FOR IMPROVEMENT LOCATIONS



**NOTES:**

1. GEODETIC POSITIONS ARE SHOWN IN DECIMAL DEGREES.
2. UNITS OF LINEAR MEASUREMENT: U.S. SURVEY FOOT
3. ELEVATIONS ARE BASED ON GPS OBSERVATIONS USING GEOID 03, NAVD88.
4. ALL SURFACE (SHL) AND BOTTOM (BHL) HOLE LOCATIONS ARE MEASURED AT 90° ANGLES FROM SECTION LINES.
5. BASIS OF BEARING: N00°52'49"E BETWEEN FOUND MONUMENTS AS SHOWN HEREON.
6. EXISTING GROUND ELEVATION: 5441'. PROPOSED PAD ELEVATION: 5441.2'.
7. GPS OPERATOR: KYLE TESKY OBSERVED AN AVERAGE PDOP OF ≤ 3.0 FOR ALL SURVEY MEASUREMENTS DEPICTED ON THIS AND SUBSEQUENT SHEETS. ALL GPS OBSERVATIONS ARE IN COMPLIANCE WITH COGCC RULE NO. 215
8. SURFACE USE: AGRICULTURAL LANDS
9. USGS QUAD MAP: PARACHUTE

**SURVEYORS STATEMENT:**

I, ELWOOD BARRY GILES, BEING A REGISTERED LAND SURVEYOR IN THE STATE OF COLORADO, DO HEREBY CERTIFY THAT THIS PLAT REPRESENTS A SURVEY PERFORMED BY ME OR UNDER MY DIRECT SUPERVISION SEPTEMBER 17, 2010 AND IS TRUE TO THE BEST OF MY KNOWLEDGE AND BELIEF.

*Elwood Barry Giles* 29 SEPT, 2010  
ELWOOD BARRY GILES  
COLORADO LS 38150 DATE

WELL No.	SECTION LINES TIES		NAD 83		NAD 27	
	FOOTAGES	FOOTAGES	LATITUDE	LONGITUDE	LATITUDE	LONGITUDE
BAT 41B-19-07-95	246' FSL	801' FEL	39.431101°	108.033164°	39.431123°	108.032535°
SURFACE HOLE	246' FSL	801' FEL	39.431101°	108.033164°	39.431123°	108.032535°
BOTTOM HOLE	457' FNL	646' FEL	39.429171°	108.032583°	39.429193°	108.031954°

	<b>SGM INC.</b> 118 W. 6th Street, Suite 200 Glenwood Springs, Colorado 81601 (970) 945-1004 (FAX 945-5948) Meeker, Colorado (970) 878-5180	Scale: 1"=1000'	Well Location Plat for Antero Resources Well BAT 41B-19-07-95 Bottom Hole NE 1/4 NE 1/4 Sect.19, T. 7 S., R. 95 W., 6th P.M., Garfield County, CO
		Sheet 1C of 11	
BAT 41B-19-07-95		Job# 2006-479.026	Date: 9.29.2010
		By: reb	File: Ant.Mon.Rid_BM