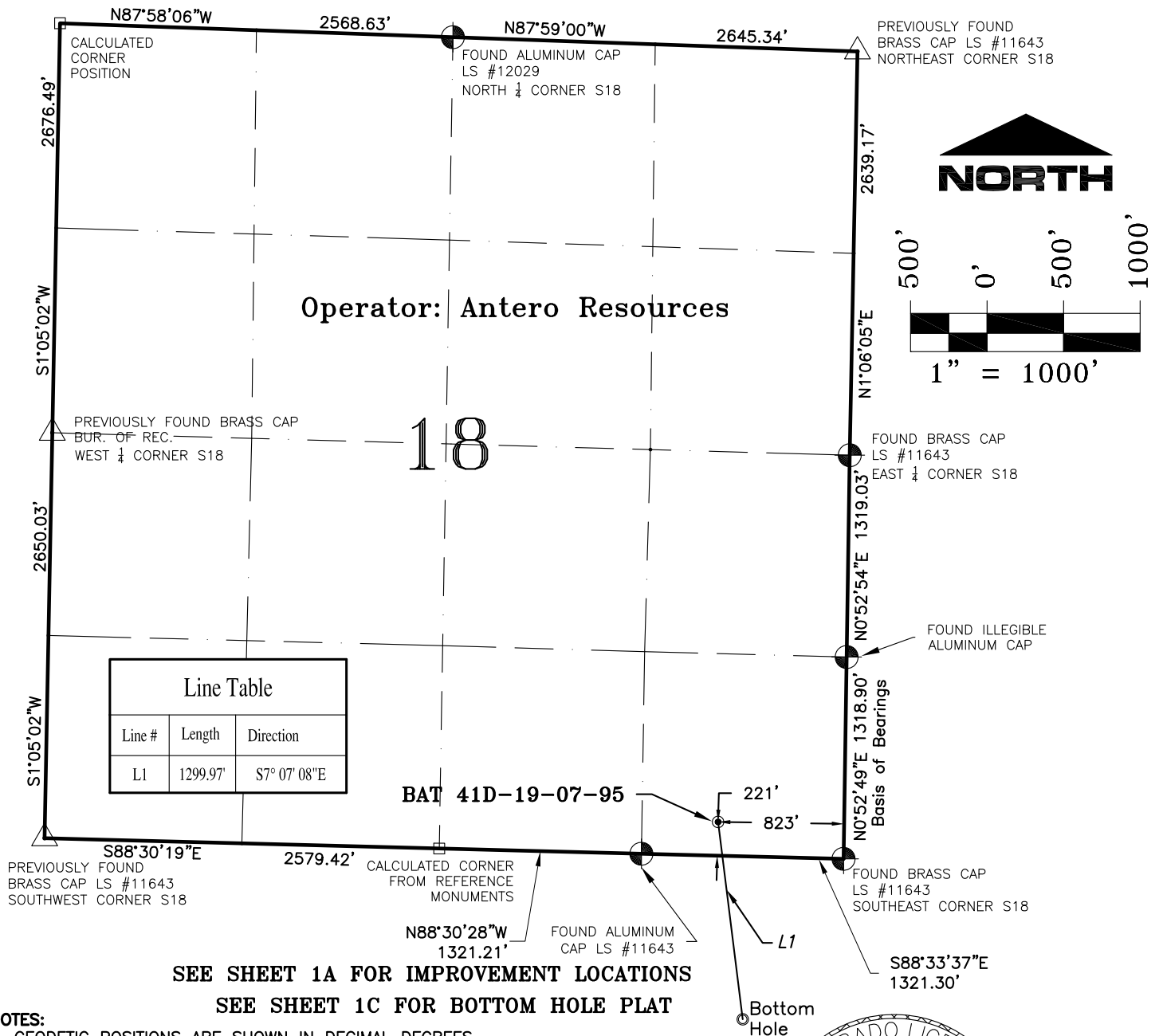


SECTION 18, T7S, R95W, 6th P.M.



Line Table		
Line #	Length	Direction
L1	1299.97'	S7° 07' 08\"E

SEE SHEET 1A FOR IMPROVEMENT LOCATIONS
SEE SHEET 1C FOR BOTTOM HOLE PLAT

NOTES:

1. GEODETIC POSITIONS ARE SHOWN IN DECIMAL DEGREES.
2. UNITS OF LINEAR MEASUREMENT: U.S. SURVEY FOOT
3. ELEVATIONS ARE BASED ON GPS OBSERVATIONS USING GEOID 03, NAVD88.
4. ALL SURFACE (SHL) AND BOTTOM (BHL) HOLE LOCATIONS ARE MEASURED AT 90° ANGLES FROM SECTION LINES.
5. BASIS OF BEARING: N00°52'49\"E BETWEEN FOUND MONUMENTS AS SHOWN HEREON.
6. EXISTING GROUND ELEVATION: 5441'. PROPOSED PAD ELEVATION: 5441.2'.
7. GPS OPERATOR: KYLE TESKY OBSERVED AN AVERAGE PDOP OF ≤ 3.0 FOR ALL SURVEY MEASUREMENTS DEPICTED ON THIS AND SUBSEQUENT SHEETS.
8. ALL GPS OBSERVATIONS ARE IN COMPLIANCE WITH COGCC RULE NO. 215
9. SURFACE USE: AGRICULTURAL LANDS
10. USGS QUAD MAP: PARACHUTE

SURVEYORS STATEMENT:

I, ELWOOD BARRY GILES, BEING A REGISTERED LAND SURVEYOR IN THE STATE OF COLORADO, DO HERBY CERTIFY THAT THIS PLAT REPRESENTS A SURVEY PERFORMED BY ME OR UNDER MY DIRECT SUPERVISION SEPTEMBER 17, 2010 AND IS TRUE TO THE BEST OF MY KNOWLEDGE AND BELIEF.

Elwood Barry Giles
ELWOOD BARRY GILES
COLORADO LS 38150

29 SEPT, 2010

DATE

WELL No.	SECTION LINES TIES		NAD 83		NAD 27	
BAT 41D-19-07-95	FOOTAGES	FOOTAGES	LATITUDE	LONGITUDE	LATITUDE	LONGITUDE
SURFACE HOLE	221' FSL	823' FEL	39.431031°	108.033242°	39.431053°	108.032612°
BOTTOM HOLE	1065' FNL	642' FEL	39.427504°	108.032545°	39.427526°	108.031915°



SGM INC.

118 W. 6th Street, Suite 200
Glenwood Springs, Colorado 81601
(970) 945-1004 (FAX 945-5948)
Meeker, Colorado (970) 878-5180

Scale: 1"=1000'

Sheet 1 of 11

BAT 41D-19-07-95

Well Location Plat for Antero Resources Well BAT 41D-19-07-95

SE 1/4 SE 1/4 Sect. 18, T. 7 S., R. 95 W., 6th P.M., Garfield County, CO

Job# 2006-479.026

Date: 9.29.2010

By: reb

File: Ant.Mon.Rid_BM

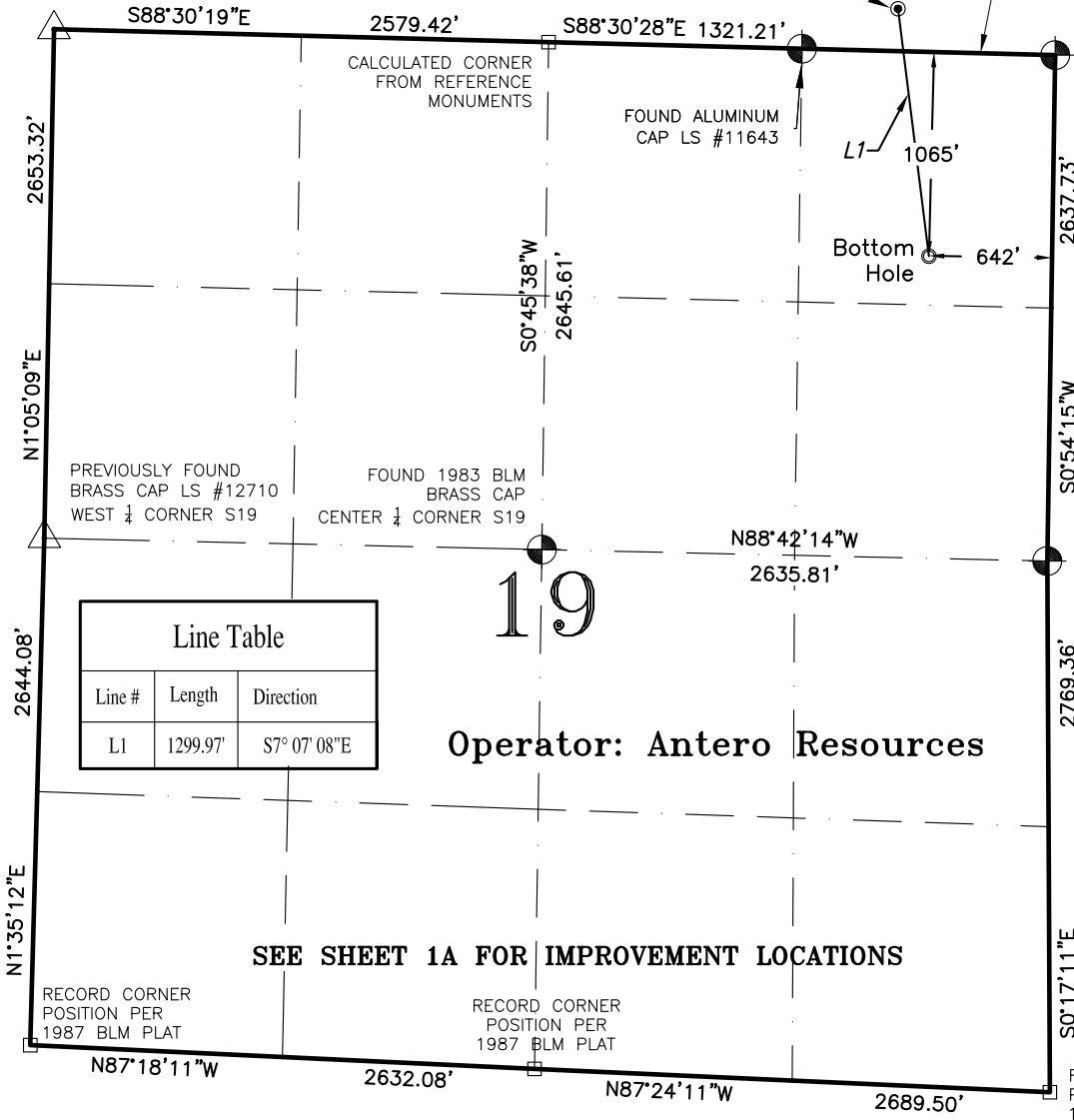
SECTION 19, T7S, R95W, 6th P.M.

PREVIOUSLY FOUND
BRASS CAP LS #11643
NORTHWEST CORNER S19

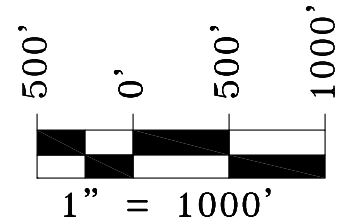
BAT 41D-19-07-95

S88°33'37"E
1321.30'

FOUND BRASS CAP
LS #11643
NORTHEAST CORNER S19



NORTH



NOTES:

1. GEODETIC POSITIONS ARE SHOWN IN DECIMAL DEGREES.
2. UNITS OF LINEAR MEASUREMENT: U.S. SURVEY FOOT
3. ELEVATIONS ARE BASED ON GPS OBSERVATIONS USING GEOID 03, NAVD88.
4. ALL SURFACE (SHL) AND BOTTOM (BHL) HOLE LOCATIONS ARE MEASURED AT 90° ANGLES FROM SECTION LINES.
5. BASIS OF BEARING: N00°52'49"E BETWEEN FOUND MONUMENTS AS SHOWN HEREON.
6. EXISTING GROUND ELEVATION: 5441'. PROPOSED PAD ELEVATION: 5441.2'.
7. GPS OPERATOR: KYLE TESKY OBSERVED AN AVERAGE PDOP OF ≤ 3.0 FOR ALL SURVEY MEASUREMENTS DEPICTED ON THIS AND SUBSEQUENT SHEETS.
8. ALL GPS OBSERVATIONS ARE IN COMPLIANCE WITH COGCC RULE NO. 215
9. SURFACE USE: AGRICULTURAL LANDS
9. USGS QUAD MAP: PARACHUTE

SURVEYORS STATEMENT:

I, ELWOOD BARRY GILES, BEING A REGISTERED LAND SURVEYOR IN THE STATE OF COLORADO, DO HERBY CERTIFY THAT THIS PLAT REPRESENTS A SURVEY PERFORMED BY ME OR UNDER MY DIRECT SUPERVISION SEPTEMBER 17, 2010 AND IS TRUE TO THE BEST OF MY KNOWLEDGE AND BELIEF.

Elwood Barry Giles
ELWOOD BARRY GILES
COLORADO LS 38150

29 SEPT, 2010

DATE

WELL No.	SECTION LINES TIES		NAD 83		NAD 27	
BAT 41D-19-07-95	FOOTAGES	FOOTAGES	LATITUDE	LONGITUDE	LATITUDE	LONGITUDE
SURFACE HOLE	221' FSL	823' FEL	39.431031°	108.033242°	39.431053°	108.032612°
BOTTOM HOLE	1065' FNL	642' FEL	39.427504°	108.032545°	39.427526°	108.031915°



SGM INC.

118 W. 6th Street, Suite 200
Glenwood Springs, Colorado 81601
(970) 945-1004 (FAX 945-5948)
Meeker, Colorado (970) 878-5180

Scale: 1"=1000'

Sheet 1C of 11

BAT 41D-19-07-95

Well Location Plat for Antero Resources Well BAT 41D-19-07-95 Bottom Hole
NE 1/4 NE 1/4 Sect. 19, T. 7 S., R. 95 W., 6th P.M., Garfield County, CO

Job# 2006-479.026

Date: 9.29.2010

By: reb

File: Ant.Mon.Rid_BM