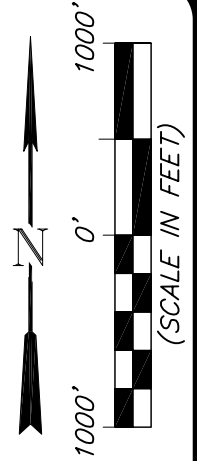
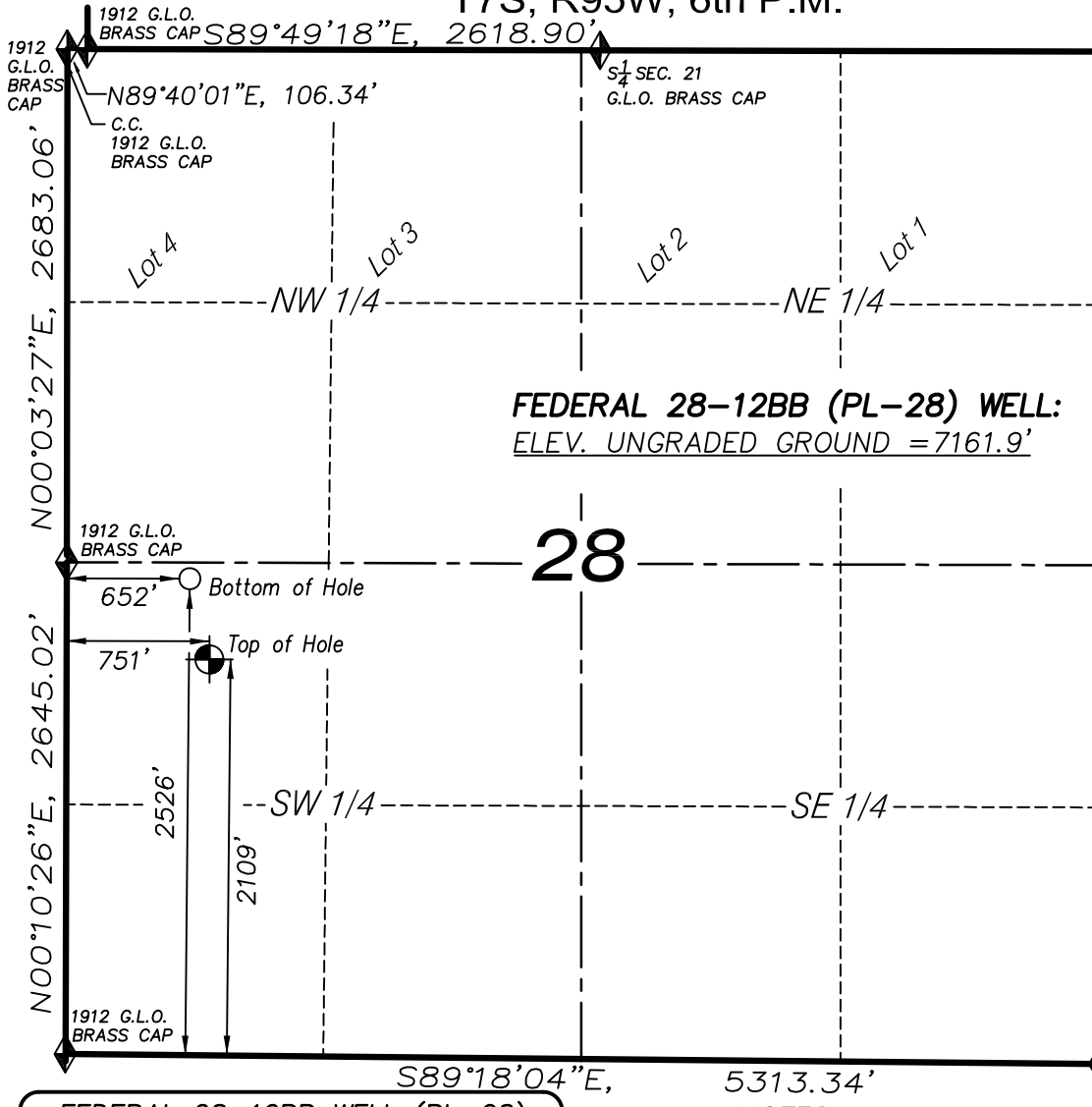


T7S, R95W, 6th P.M.



LEGEND

- SECTION CORNER LOCATED
- SURFACE LOCATION
- BOTTOM HOLE LOCATION
- RECORD LOCATION OF CORNER

FEDERAL 28-12BB WELL (PL-28)
 (WELLHEAD LOCATION) NAD 83
 LATITUDE = 39.40693° N
 LONGITUDE = 108.00894° W
 (BOTTOM HOLE LOCATION) NAD 83
 LATITUDE = 39.40808° N
 LONGITUDE = 108.00929° W

CERTIFICATE OF SURVEYOR

I, TED TAGGART OF FRUITA, COLORADO HEREBY CERTIFY THAT THIS MAP WAS MADE FROM NOTES TAKEN DURING AN ACTUAL SURVEY MADE BY ME OR UNDER MY DIRECTION FOR ENCANA OIL & GAS (USA) INC. AND THAT THIS LOCATION HAS BEEN STAKED ON THE GROUND AS SHOWN HEREON.



NOTES

1. WELL FOOTAGES ARE MEASURED AT RIGHT ANGLES TO SECTION LINES.
2. BASIS OF BEARING: GEODETIC- BASED ON GPS OBSERVATIONS.
3. ELEVATIONS BASED ON GPS OBSERVATIONS, NAVD 88 (GEOID 03), POST PROCESSED USING NGS OPUS.
4. THE BOTTOM HOLE BEARS N13°11'24"W, 429' FROM TOP OF HOLE.
5. SEE ADDENDUM TO LEGAL PLAT (SHEET 1i) FOR VISIBLE IMPROVEMENTS WITHIN 400 FEET OF THE PROPOSED OIL & GAS LOCATION.
6. CONTROL FOR SURVEY WAS ESTABLISHED USING DIFFERENTIALLY CORRECTED GPS FROM AN OPUS BASED CONTROL NETWORK. WELL LOCATION WAS ESTABLISHED USING NON-GPS CONVENTIONAL METHODS, THEREFORE NO PDOP READING WAS TAKEN.

MAP to ACCOMPANY
APPLICATION for PERMIT to DRILL
EnCana Oil & Gas (USA) Inc.
Federal 28-12BB (PL-28) Well

NW1/4 SW1/4, SECTION 28
 T7S, R95W, 6th P.M.
 GARFIELD COUNTY, COLORADO

Location Plat		Scale: 1" = 1000'	SHEET 1f OF 10
Project No.	09-04-40	Date Surveyed: 11/06/09	
Date Drawn:	3/01/10	Latest Revision Date: 7/16/10	



906 Main Street
 Evanston, Wyoming 82930
 Phone No. (307) 789-4545