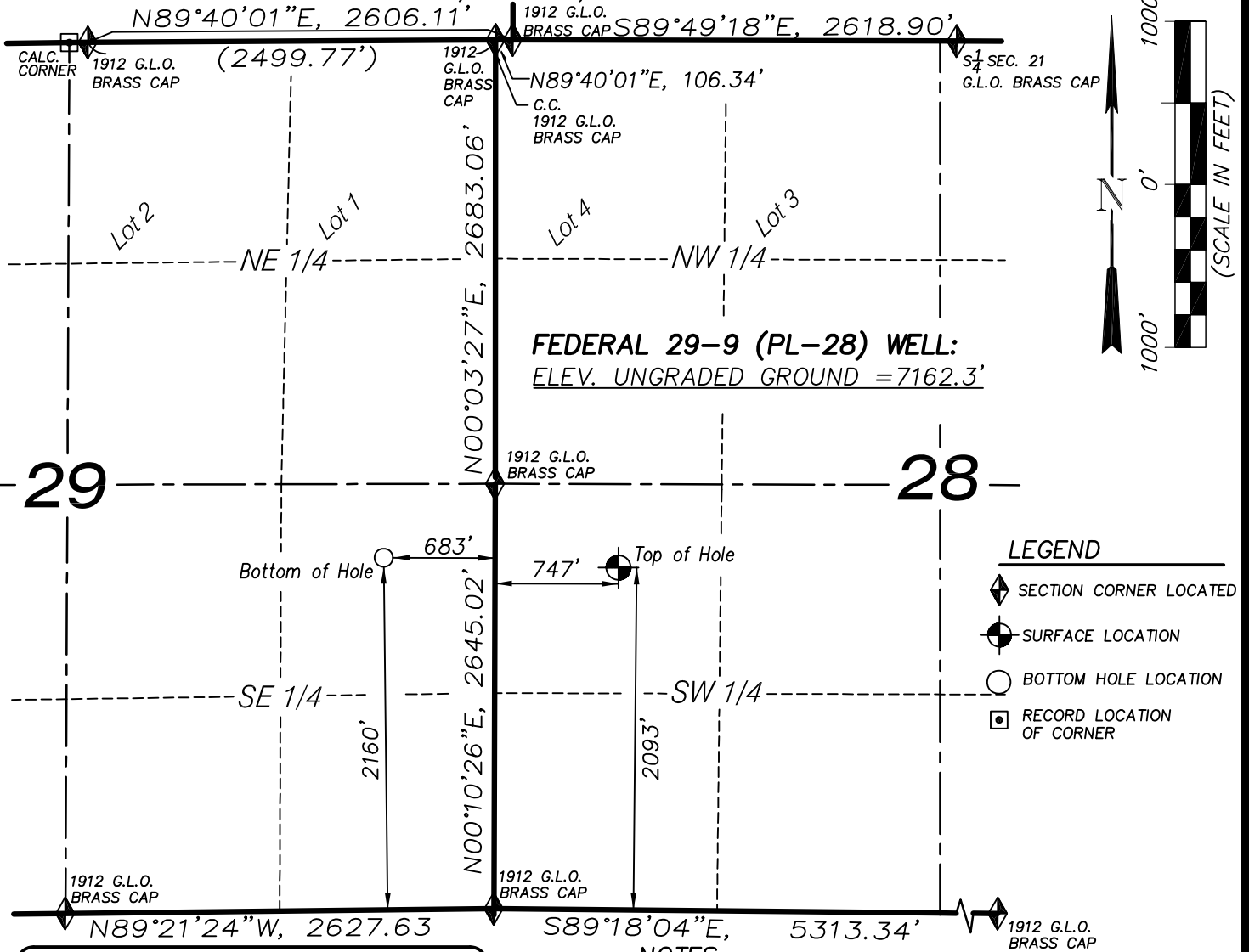


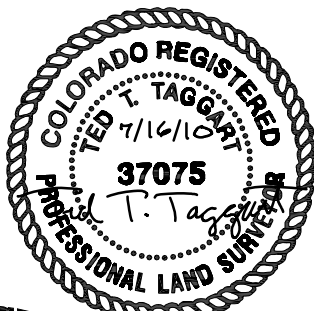
T7S, R95W, 6th P.M.



FEDERAL 29-9 WELL (PL-28)
 (WELLHEAD LOCATION) NAD 83
 LATITUDE = 39.40689° N
 LONGITUDE = 108.00896° W
 (BOTTOM HOLE LOCATION) NAD 83
 LATITUDE = 39.40710° N
 LONGITUDE = 108.01402° W

CERTIFICATE OF SURVEYOR

I, TED TAGGART OF FRUITA, COLORADO HEREBY CERTIFY THAT THIS MAP WAS MADE FROM NOTES TAKEN DURING AN ACTUAL SURVEY MADE BY ME OR UNDER MY DIRECTION FOR ENCANA OIL & GAS (USA) INC. AND THAT THIS LOCATION HAS BEEN STAKED ON THE GROUND AS SHOWN HEREON.



906 Main Street
 Evanston, Wyoming 82930
 Phone No. (307) 789-4545

MAP to ACCOMPANY
APPLICATION for PERMIT to DRILL
EnCana Oil & Gas (USA) Inc.
Federal 29-9 (PL-28) Well

NW1/4 SW1/4, SECTION 28
 T7S, R95W, 6th P.M.
 GARFIELD COUNTY, COLORADO

Location Plat		Scale: 1" = 1000'	SHEET 1g OF 10
Project No.	09-04-40	Date Surveyed: 11/06/09	
Date Drawn:	3/01/10	Latest Revision Date: 7/16/10	