

WELL LOCATION FOR WHITING OIL AND GAS CORPORATION

CHALK BLUFFS 36-13H

R 60 W

NOTES

BEARINGS SHOWN HEREON ARE
BASED UPON RTK GPS
OBSERVATIONS

SEE LOCATION DRAWING FOR
IMPROVEMENTS WITHIN 600' OF
LOCATION.

USGS QUAD MAP:
GROVER SE, COLO.

LAT/LONG VALUES ARE NAD83

ELEVATIONS BASED UPON NGS
OPUS SOLUTION NAVD 88 DATUM

ALL DISTANCES TO SECTION LINES
ARE MEASURED PERPENDICULAR
TO AND ARE AT RIGHT ANGLES
TO SAID SECTION LINES.

CALCULATED DIMENSIONS
ARE IN PARENTHESES

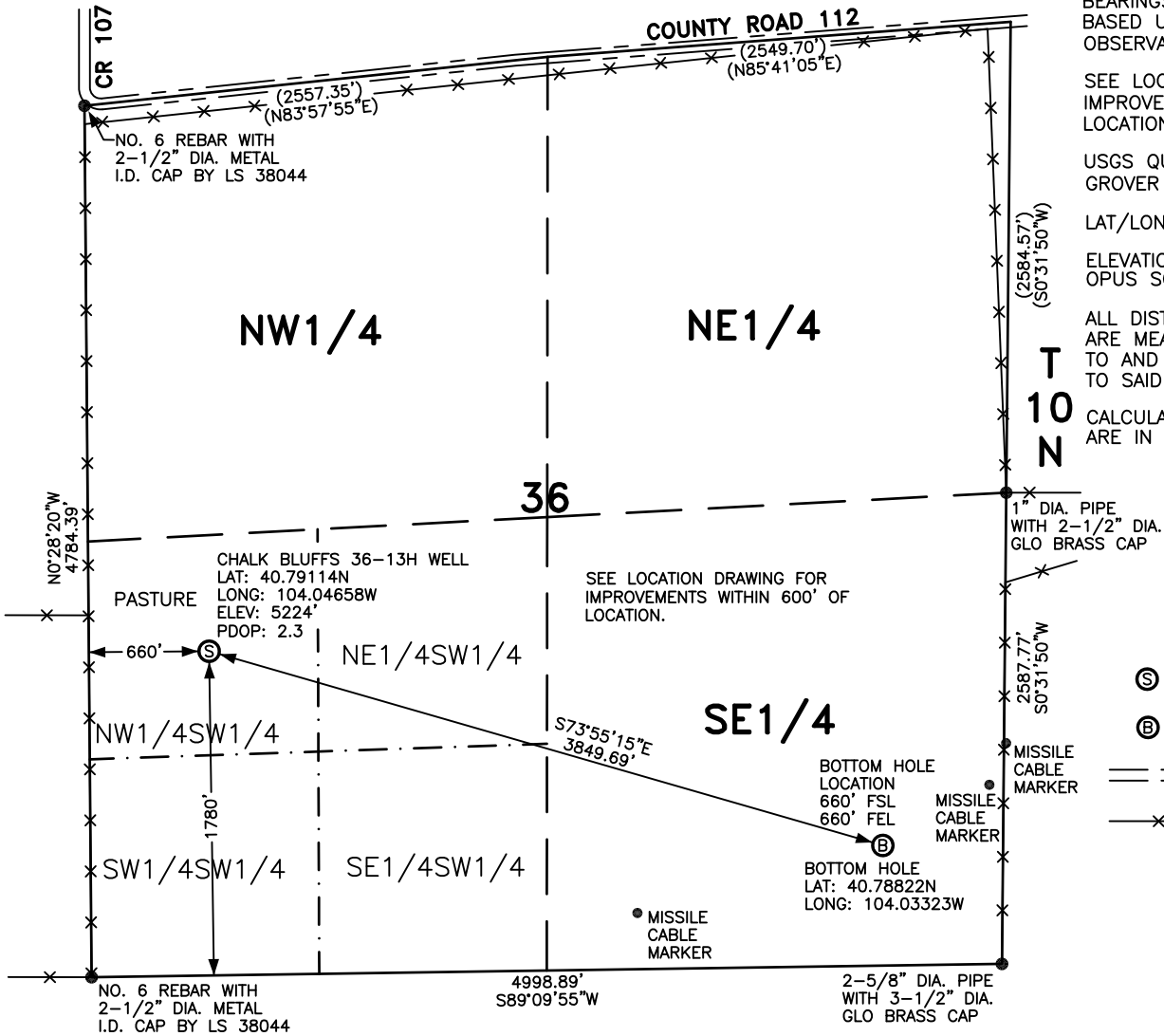
LEGEND

⊙ FIELD SURVEYED
WELL LOCATION

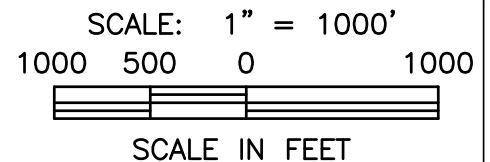
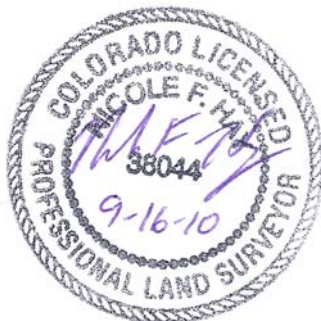
⊙ FIELD SURVEYED
BOTTOM HOLE LOCATION

== == == ROAD

-x-x- FENCE



THIS WELL LOCATION PLAT HAS BEEN PREPARED FOR WHITING OIL AND GAS CORPORATION,
TO LOCATE THE CHALK BLUFFS 36-13H WELL BEING 660 FEET FROM THE WEST LINE AND
1780 FEET FROM THE SOUTH LINE IN THE NW1/4SW1/4 OF SECTION 36,
TOWNSHIP 10 NORTH, RANGE 60 WEST OF THE 6TH P.M., WELD COUNTY, COLORADO.
THE SURFACE ELEVATION AT THIS POINT IS 5224 FEET.
THIS IS NOT A LAND SURVEY PLAT.



LEIBERT-McATEE & ASSOCIATES, INC.

P.O. BOX 442 615 SOUTH TENTH AVENUE
STERLING, CO 80751 970-522-1960

FIELD DATE: 9-13-10	DWG DATE: 9-16-10	GPS OPERATOR: DARREN VEAL
CHALK BLUFFS 36-13H	DWG NO. 1120-10	SHEET 1 OF 1