



SUPERIOR
Black Lick, Pa.
Mercer, Pa.
Wooster, Ohio
Cleveland, Ok.

GAMMA RAY C.C.L.
CEMENT BOND V.D.L.

Company EOG RESOURCES
Well LaMOTTA 5-01M
Field WILDCAT
County WELD State COLORADO

Location: API #: 05-123-30556-00
SHL: 1885' FNL / 1834' FEL
LAT. / LONG. 40.953 / -104.378
SEC 1 TWP 11N RGE 63W
Permanent Datum GL Elevation 5298
Log Measured From KB
Drilling Measured From KB
Other Services
K.B. 5316
D.F. 5315
G.L. 5298

Date SEPT.08-09

Run Number				ONE			
Depth Driller				7780			
Depth Logger				7722			
Bottom Logged Interval				7721			
Top Log Interval				SURFACE			
Open Hole Size				7.875			
Type Fluid				WATER			
Density / Viscosity				N/A			
Max. Recorded Temp.				248°F			
Estimated Cement Top				SURFACE			
Time Well Ready				MAST UNIT			
Time Logger on Bottom				2-3/4 #2			
Equipment Number				703			
Location				45			
Recorded By				LEROY HOBBS			
Witnessed By				LEO HANSELMAN			
Borehole Record				Tubing Record			
Run Number	Bit	From	To	Size	Weight	From	To
Casing Record	Size				Top		Bottom
Surface String							
Prot. String							
Production String	5-1/2						
Liner							

<<< Fold Here >>>

All interpretations are opinions based on inferences from electrical or other measurements and we cannot and do not guarantee the accuracy or correctness of any interpretation, and we shall not, except in the case of gross or willful negligence on our part, be liable or responsible for any loss, costs, damages, or expenses incurred or sustained by anyone resulting from any interpretation made by any of our officers, agents or employees. These interpretations are also subject to our general terms and conditions set out in our current Price Schedule.

Comments

CORRECTED TO SCHULMBERGER PLATFORM
LOG DATED 5-AUG-2009.

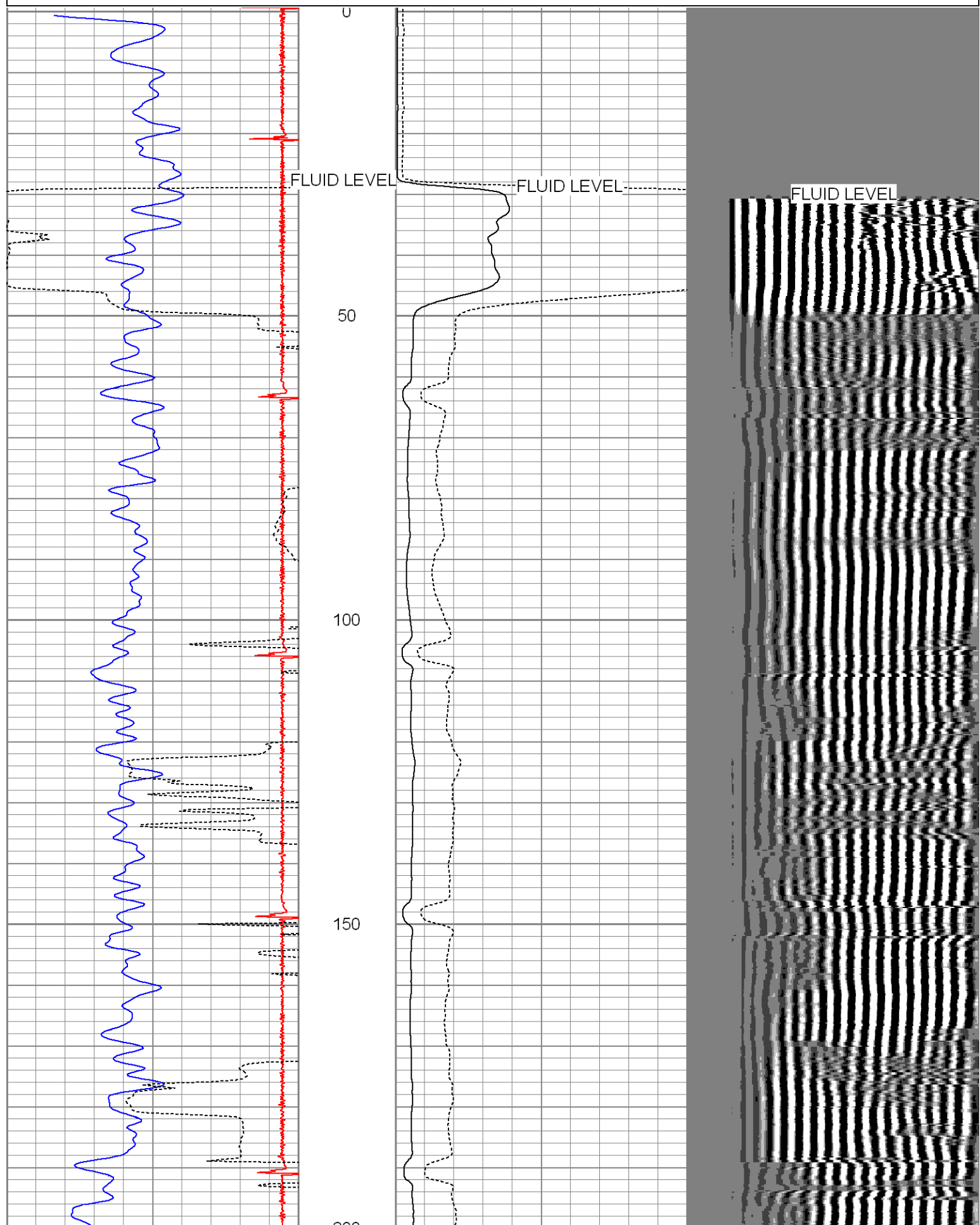
THANK YOU FOR USING SUPERIOR WELL SERVICES.

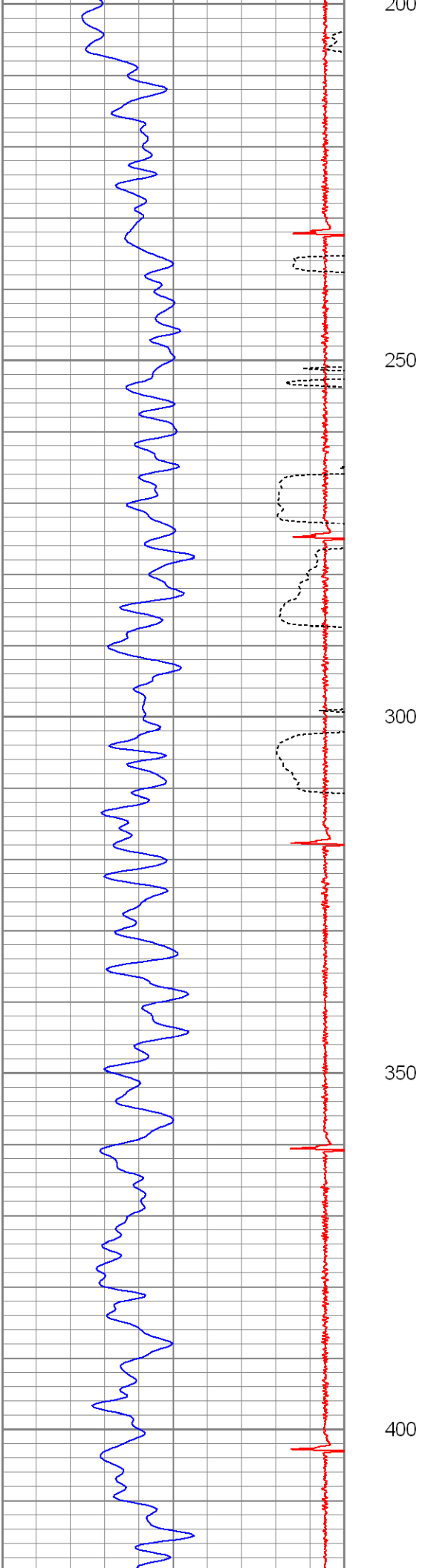
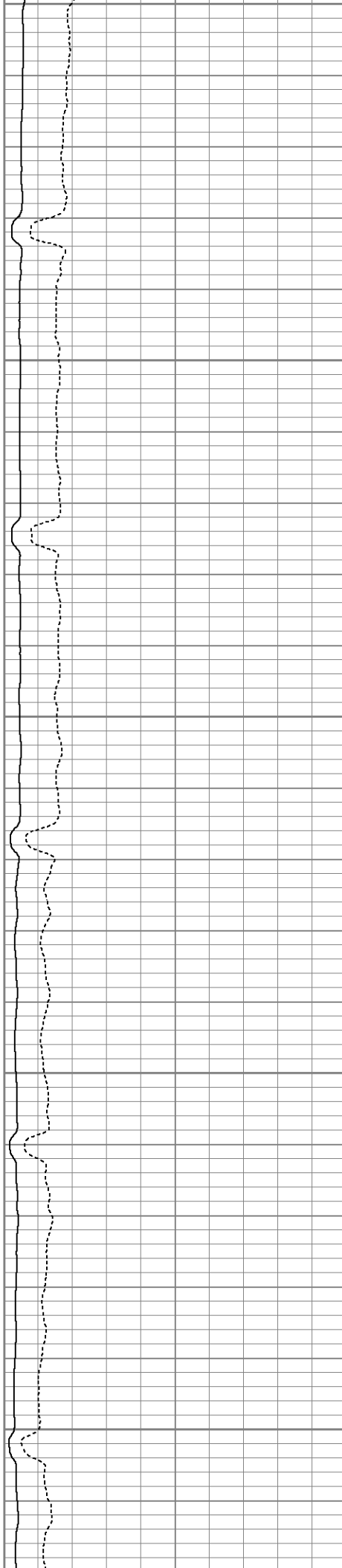
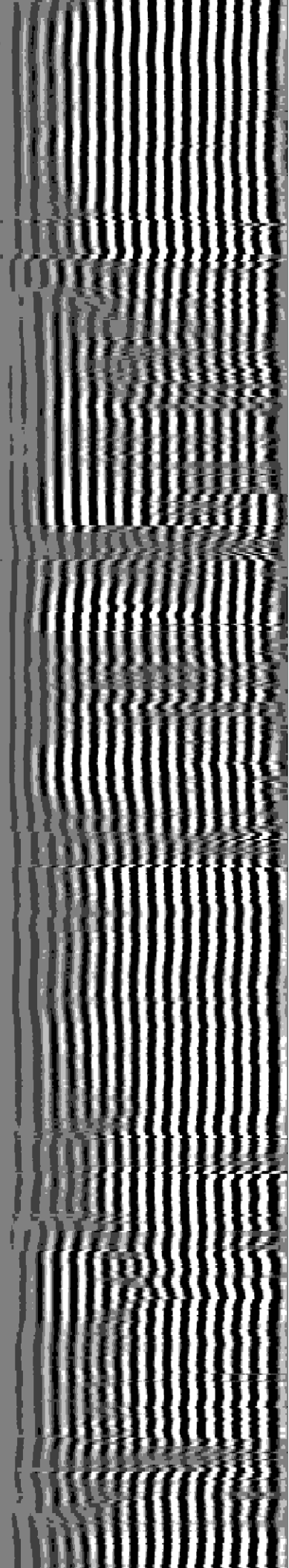
Database File: lamotta5-01cbl.db
Dataset Pathname: pass3
Presentation Format: nuexbond
Dataset Creation: Tue Sep 08 13:31:40 2009 by Log Open-Cased 071220
Charted by: Depth in Feet scaled 1:240

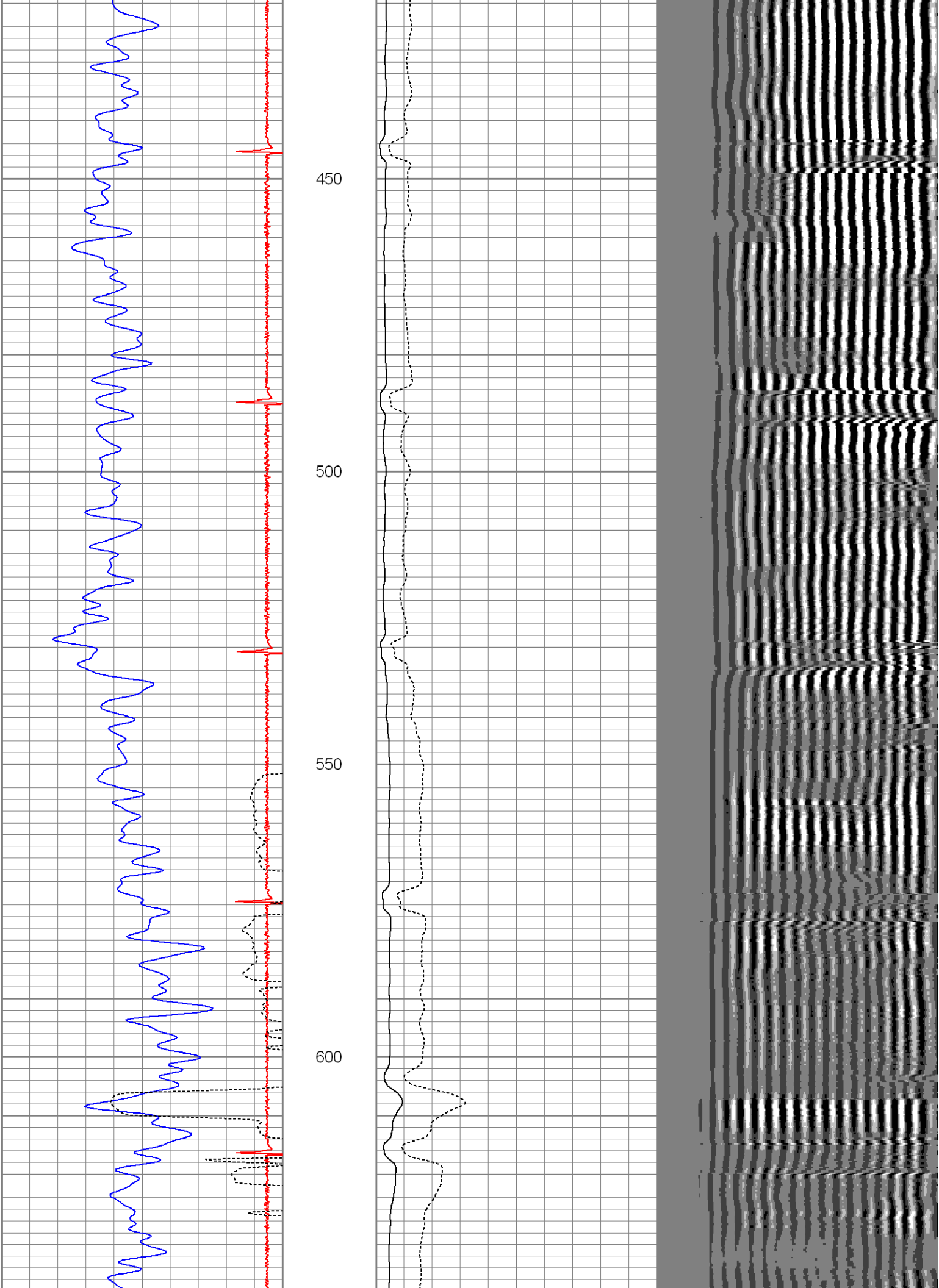
0	Gamma Ray (GAPI)	200
9	CCL	-0.5
240	TT3FT (usec)	340

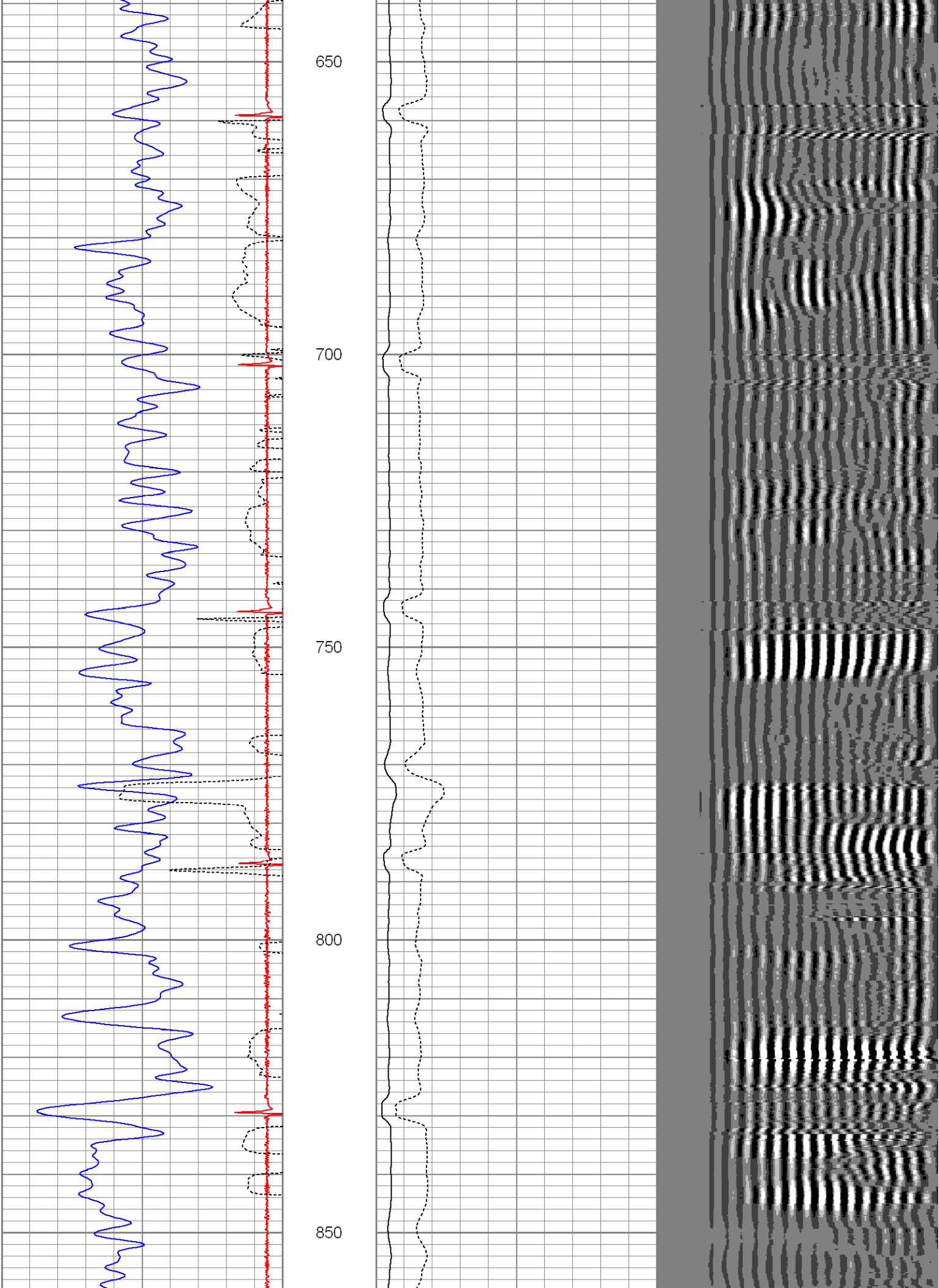
0	Amplified Amplitude (mV)	30	200
0	Amplitude (mV)	100	

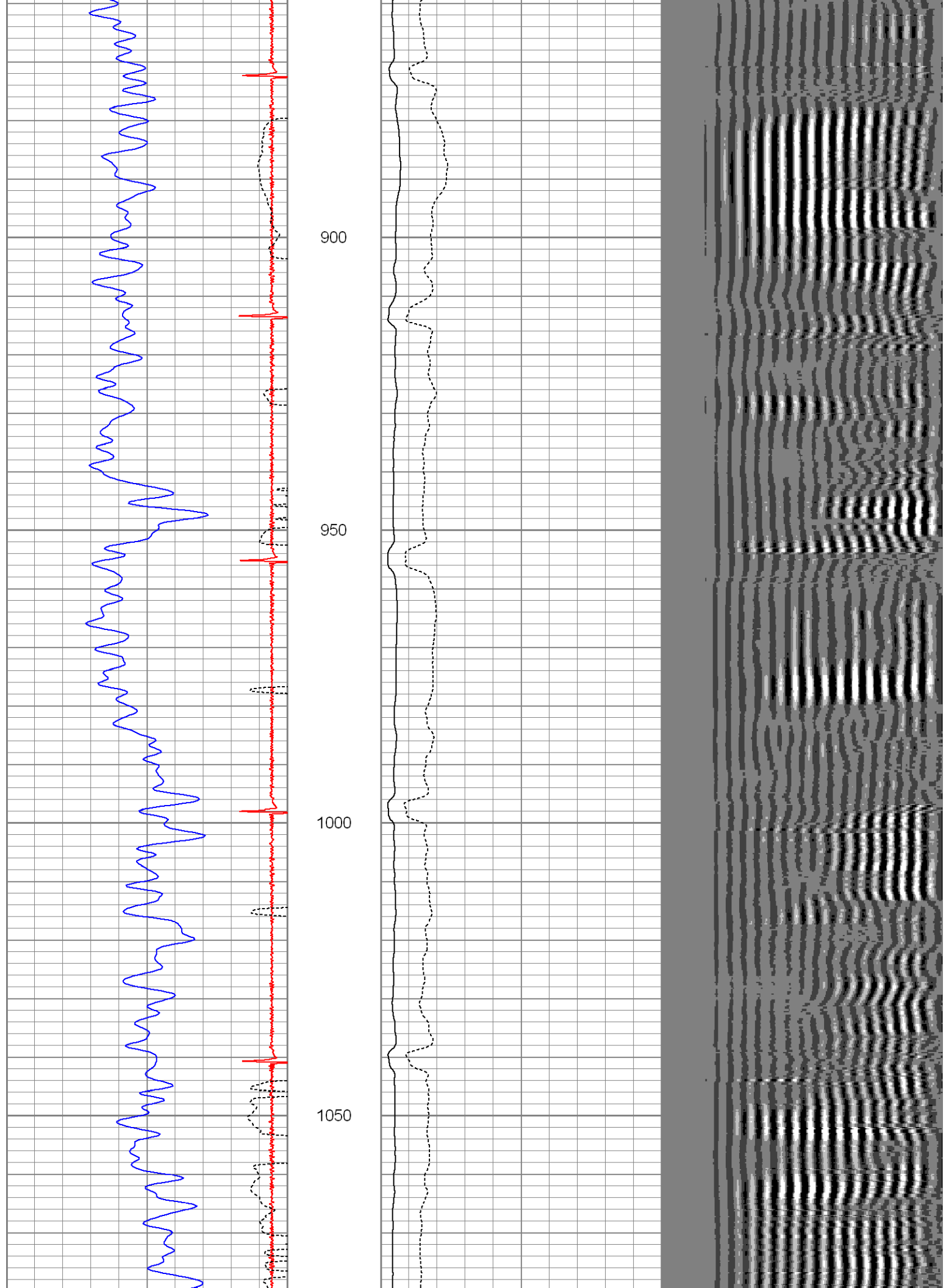
VDL 1200

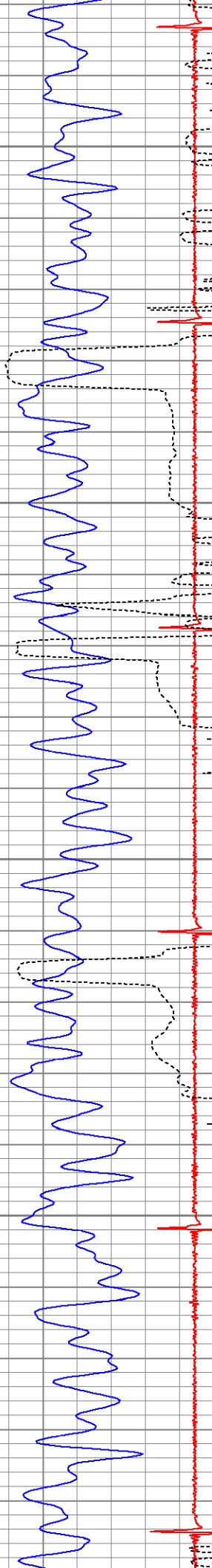












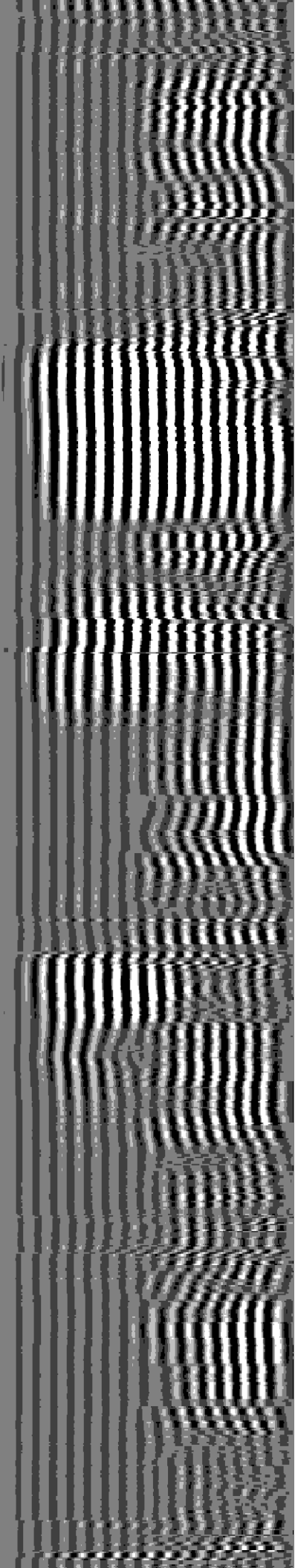
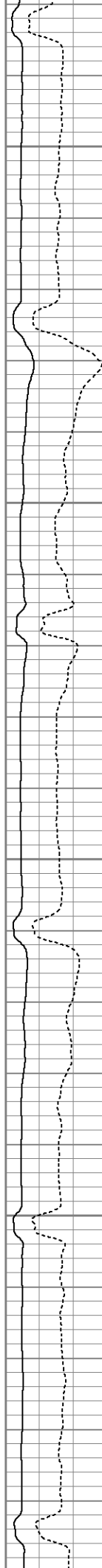
1100

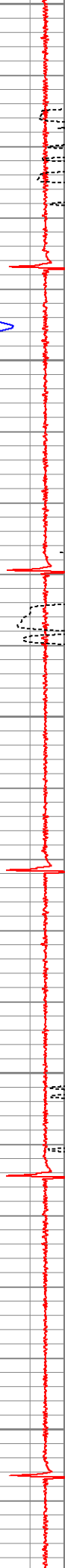
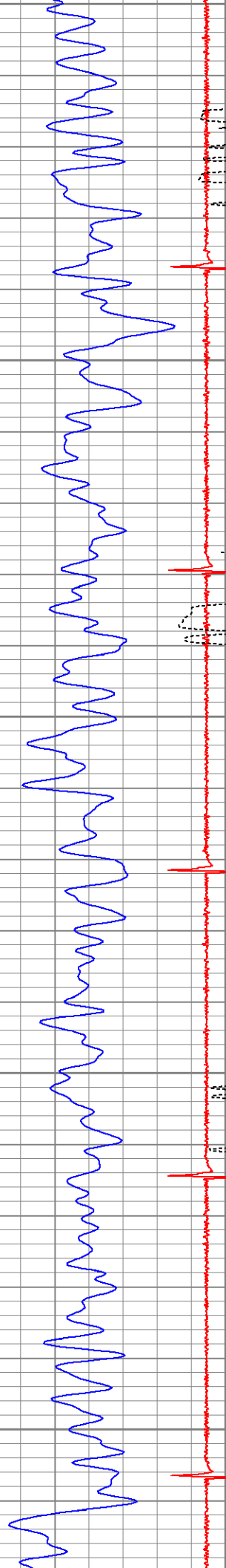
1150

1200

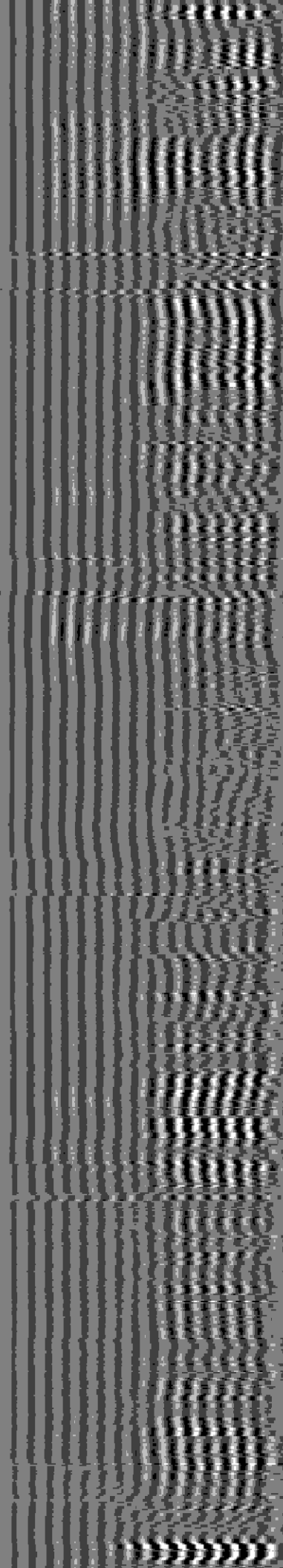
1250

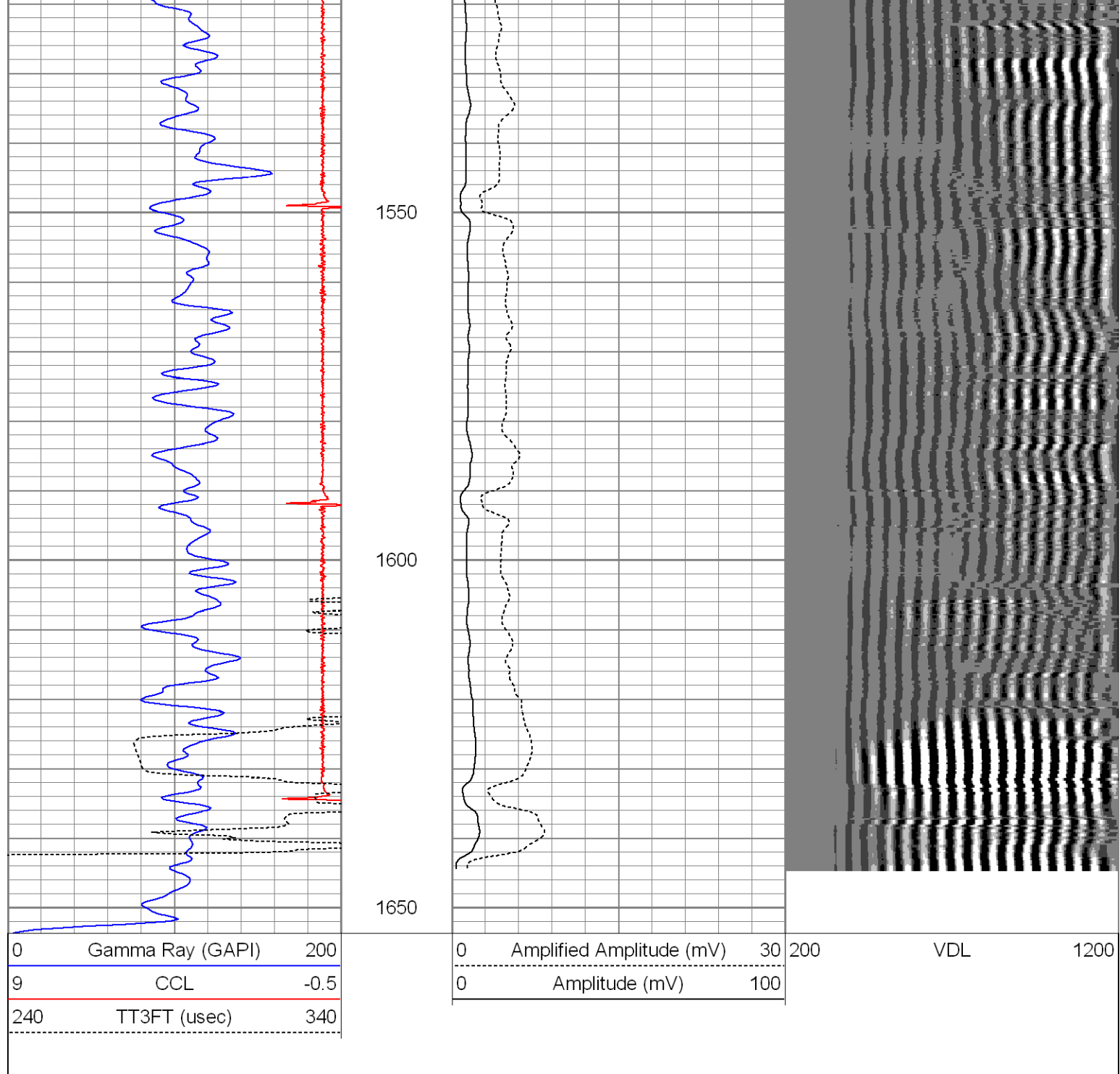
1300





1300
1350
1400
1450
1500



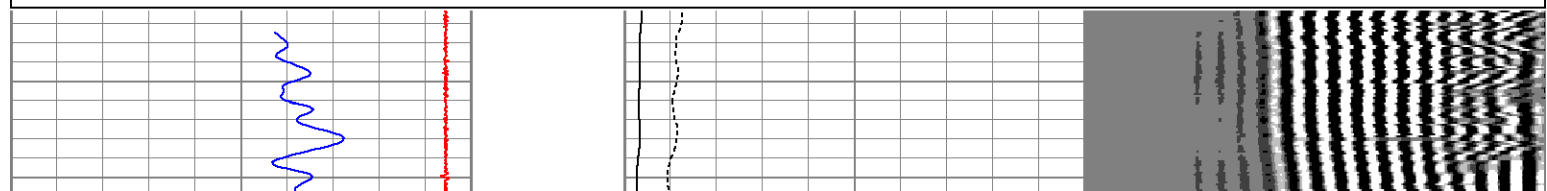


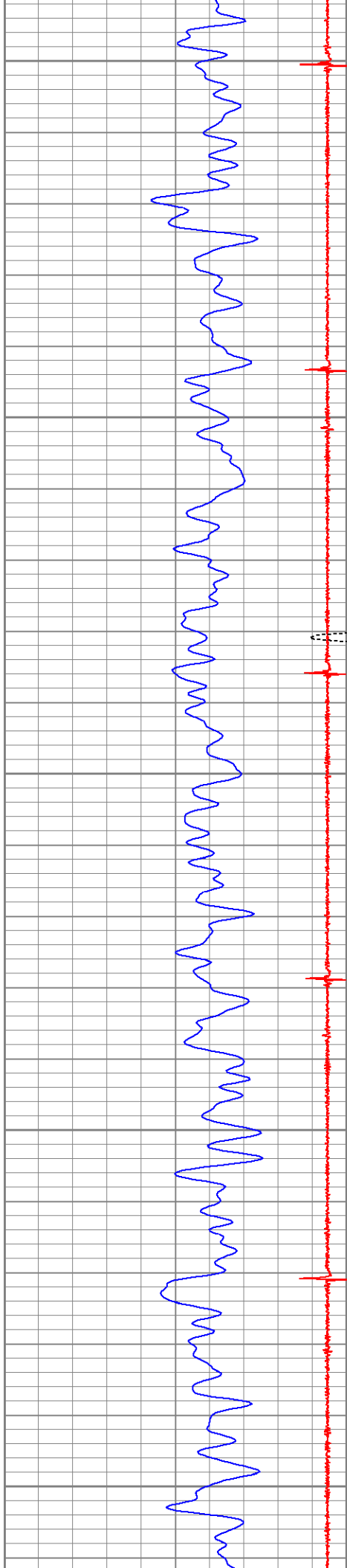
Database File: lamotta5-01cbl.db
Dataset Pathname: pass2
Presentation Format: nuexbond
Dataset Creation: Tue Sep 08 13:07:10 2009 by Log Open-Cased 071220
Charted by: Depth in Feet scaled 1:240

0	Gamma Ray (GAPI)	200
9	CCL	-0.5
240	TT3FT (usec)	340

0	Amplified Amplitude (mV)	30
0	Amplitude (mV)	100

200	VDL	1200
-----	-----	------





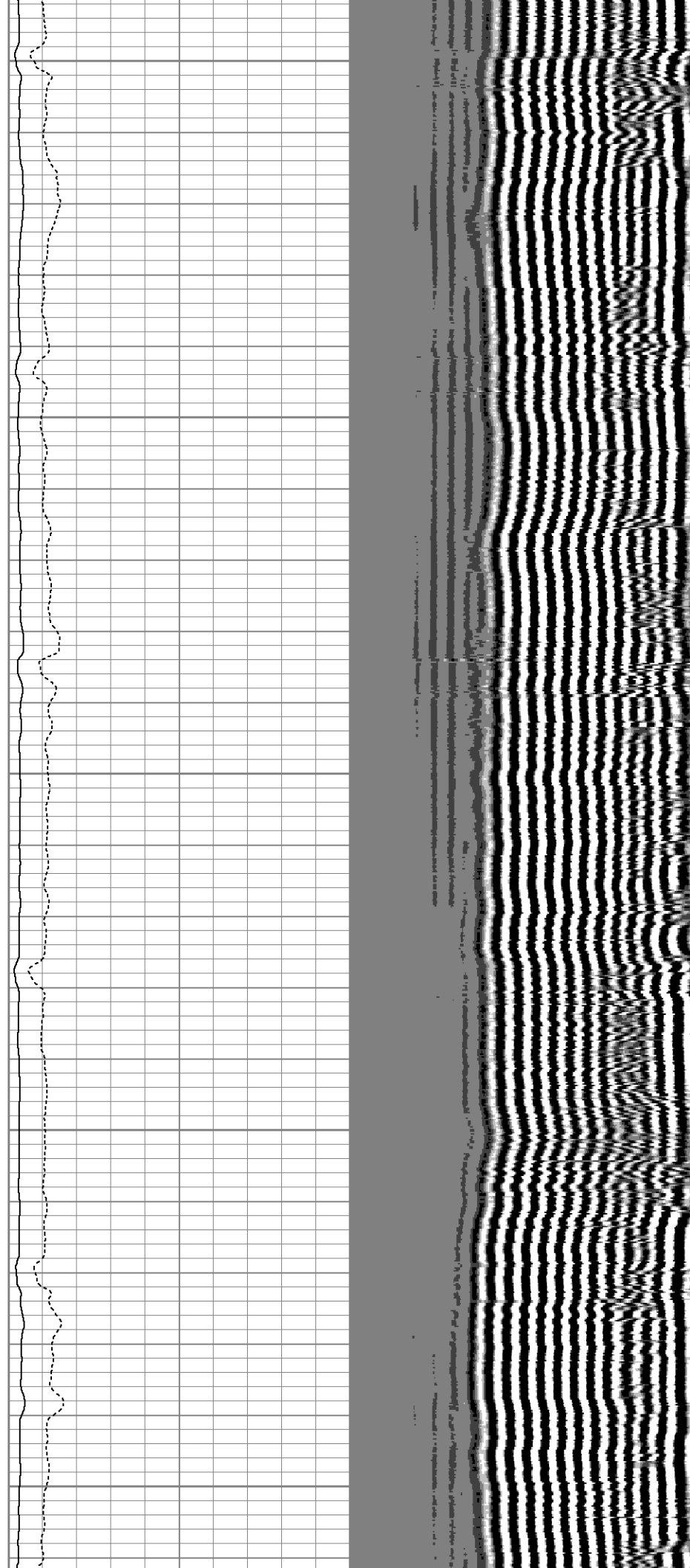
6500

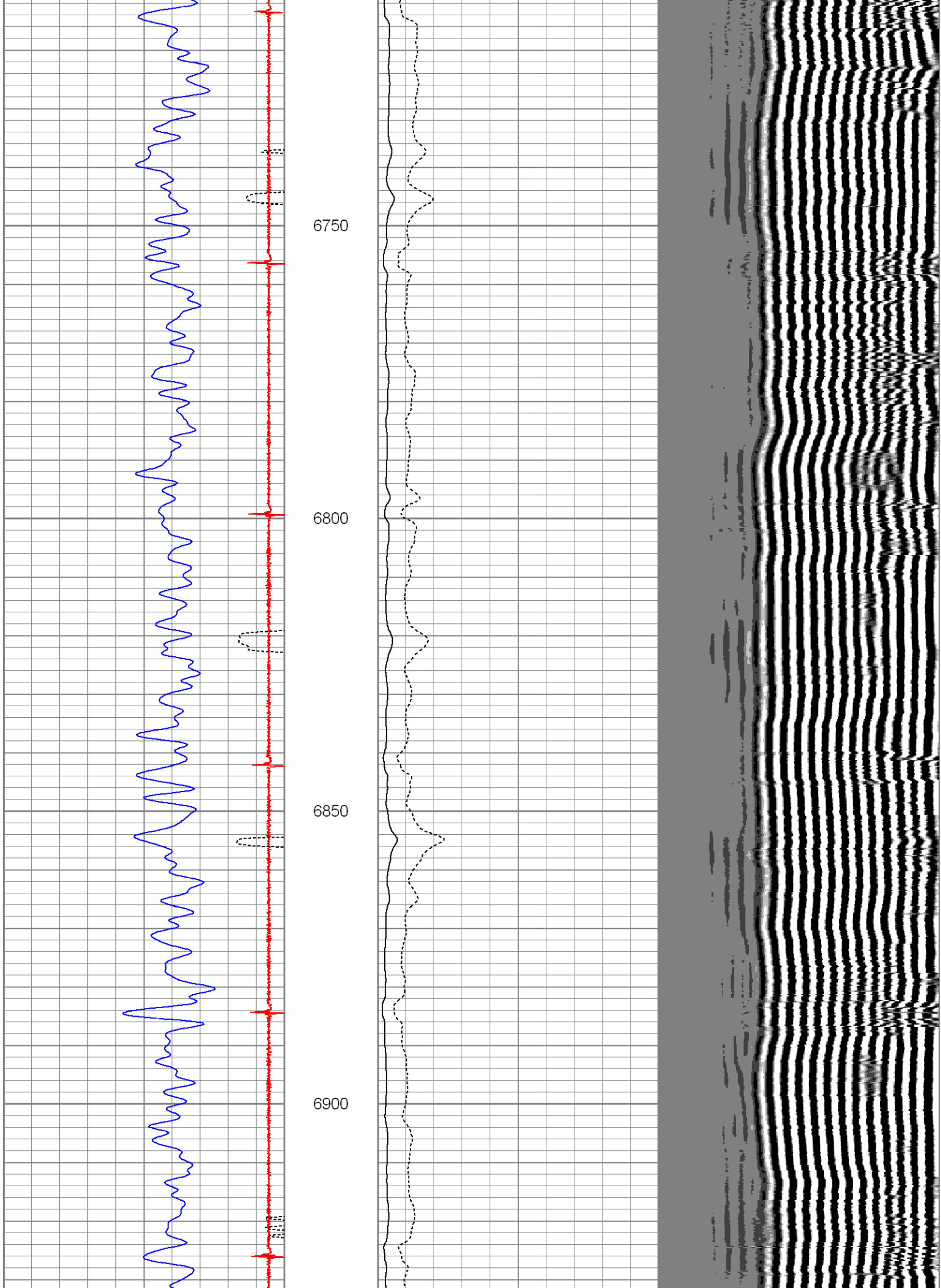
6550

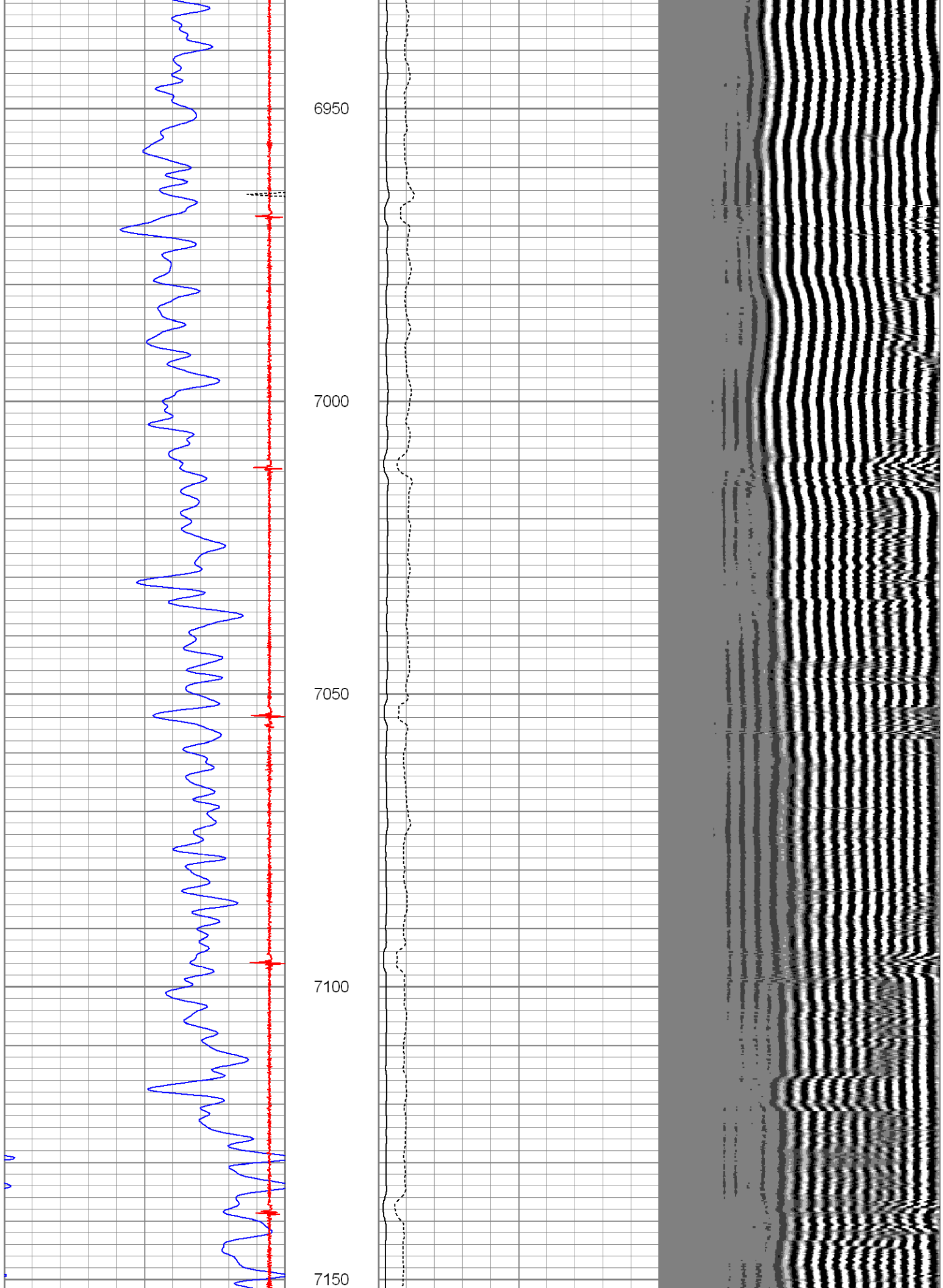
6600

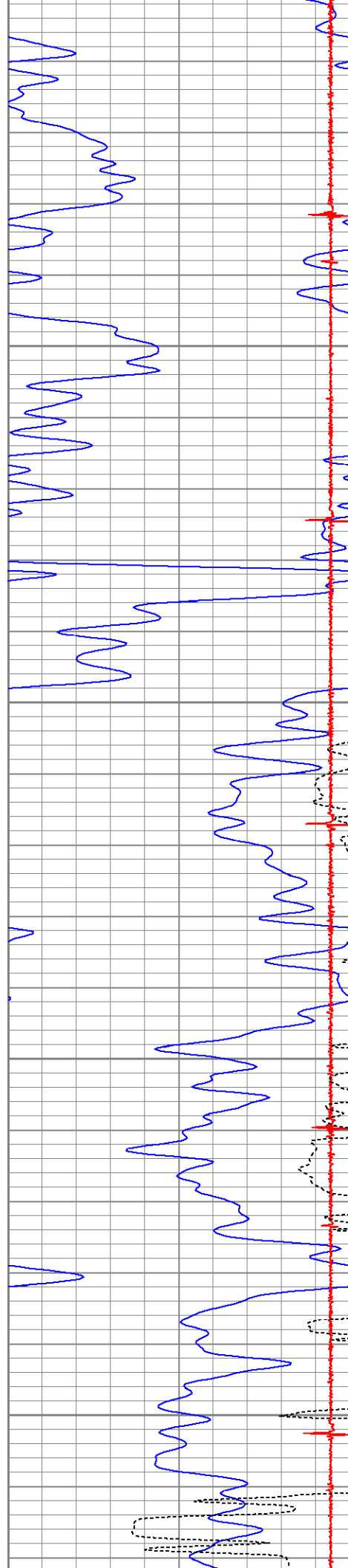
6650

6700







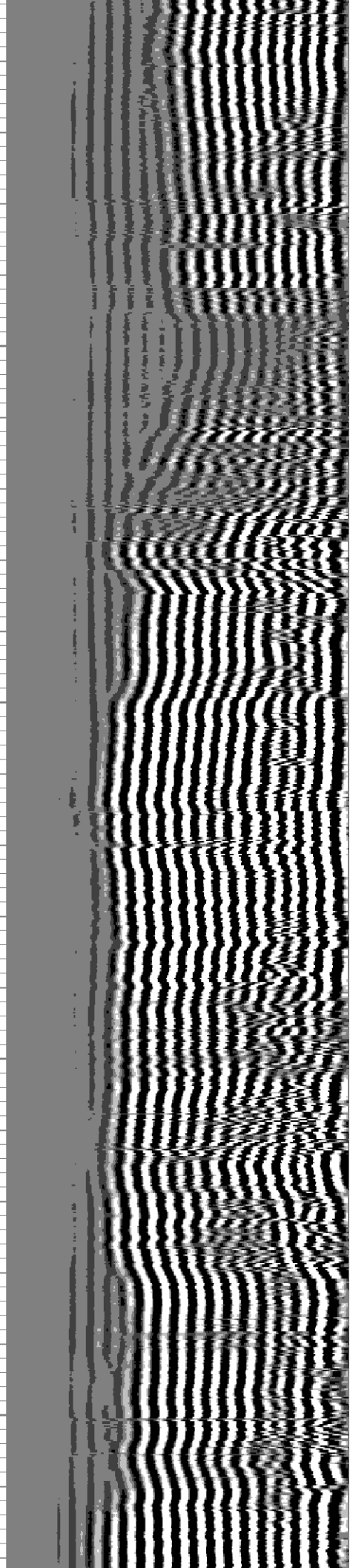
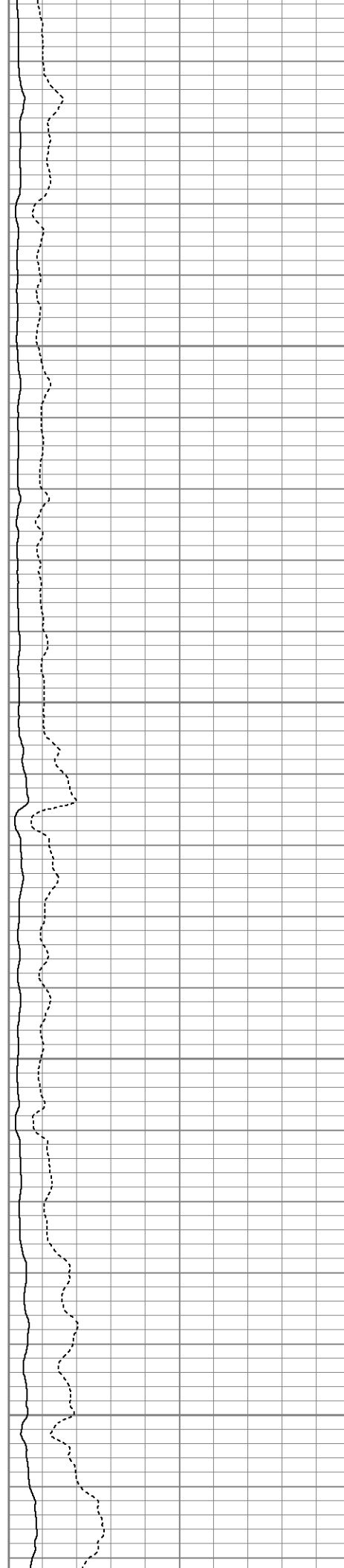


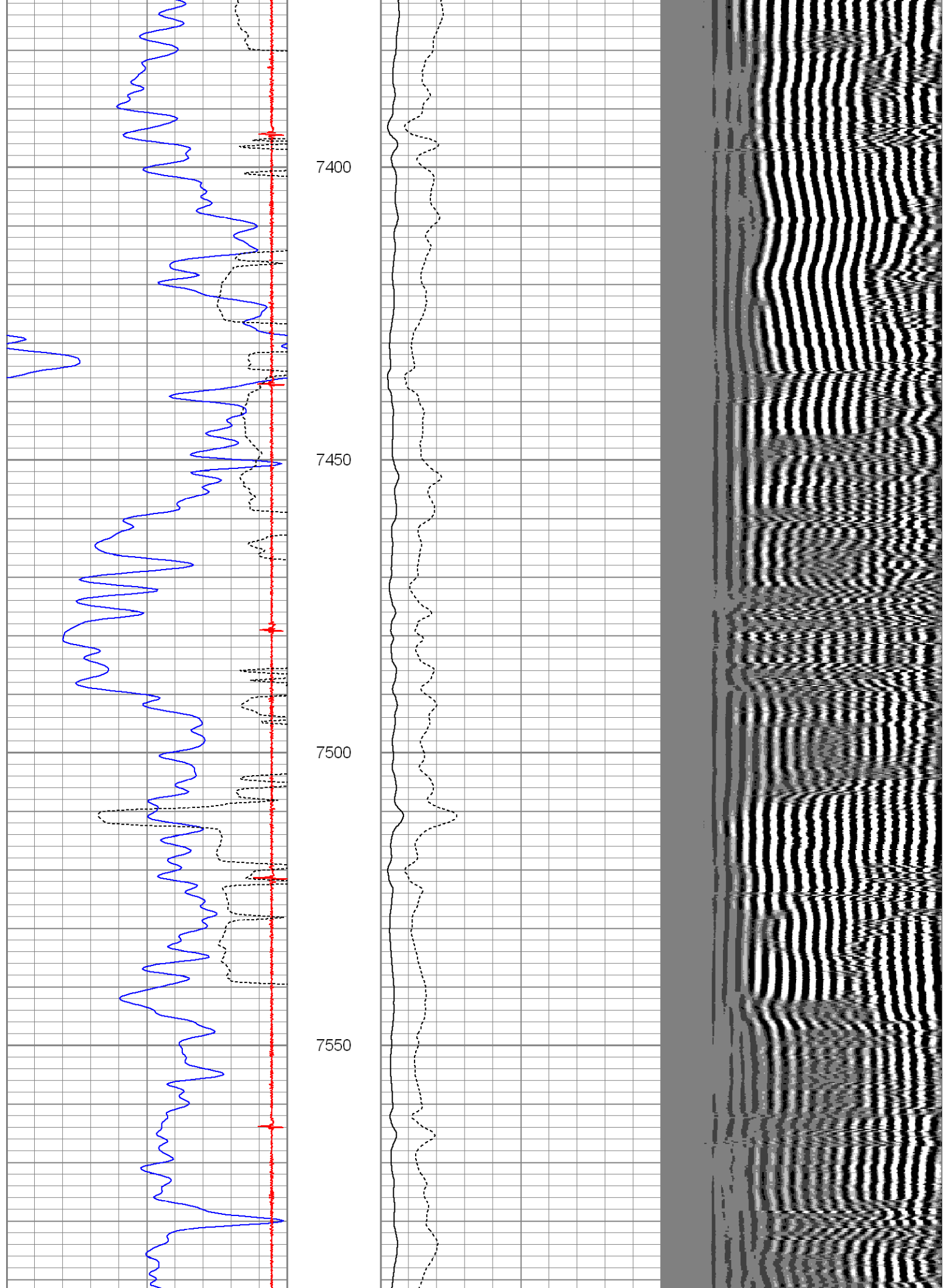
7200

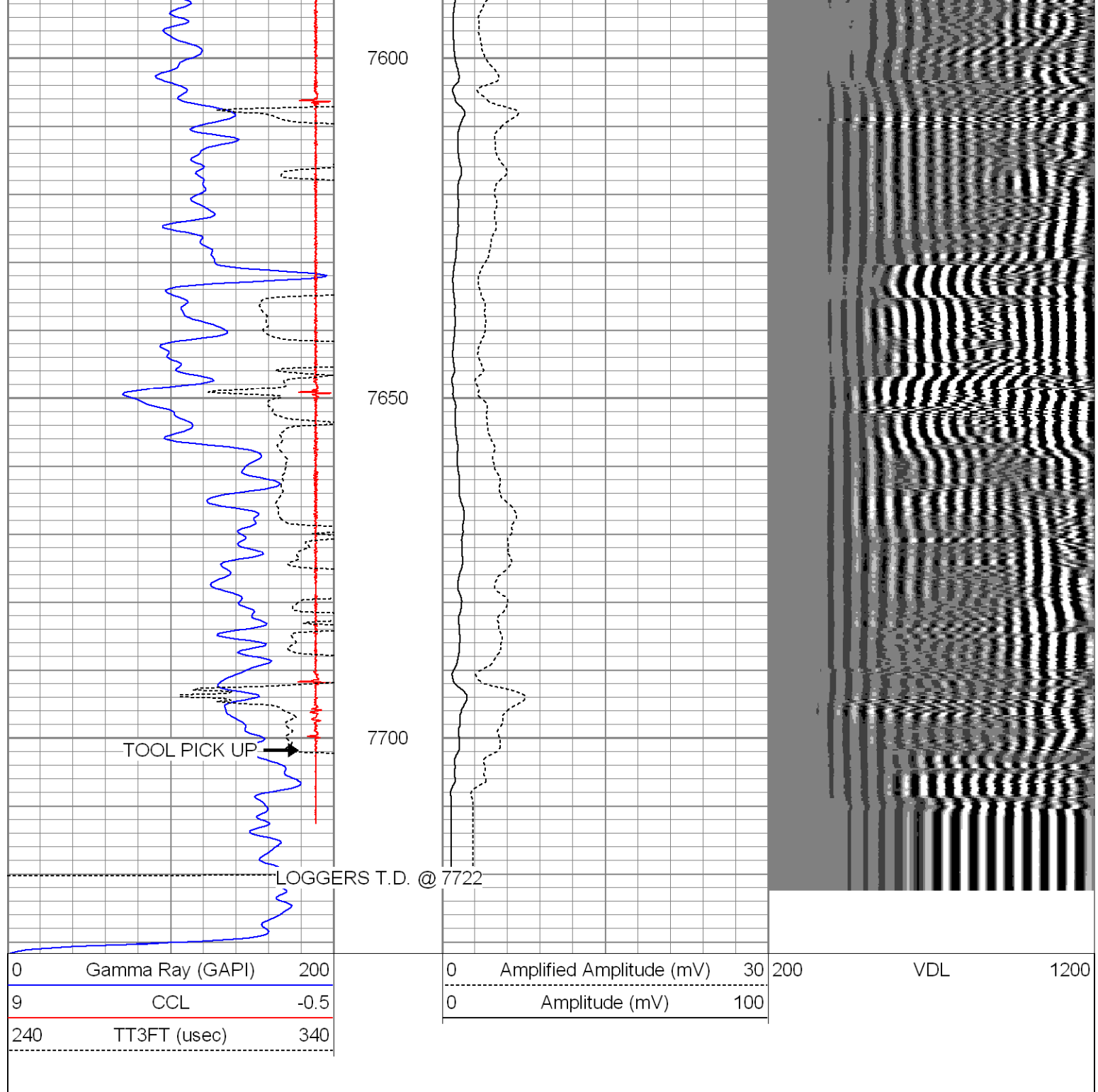
7250

7300

7350







Sensor	Offset (ft)	Schematic	Description	Len (ft)	OD (in)	Wt (lb)
CCL	18.92		CHD-STNDRD (1) Standard Cable Head	1.00	1.69	5.00
			CCL-tekco (234CCL-169) 2 3/4" TEKCO Collar Locator	1.83	2.75	10.00
			CENT-2750-CENT (2750-CENT-LONG) Electric Line Technologies Centralizer 2.75"	2.75	2.75	10.00

