



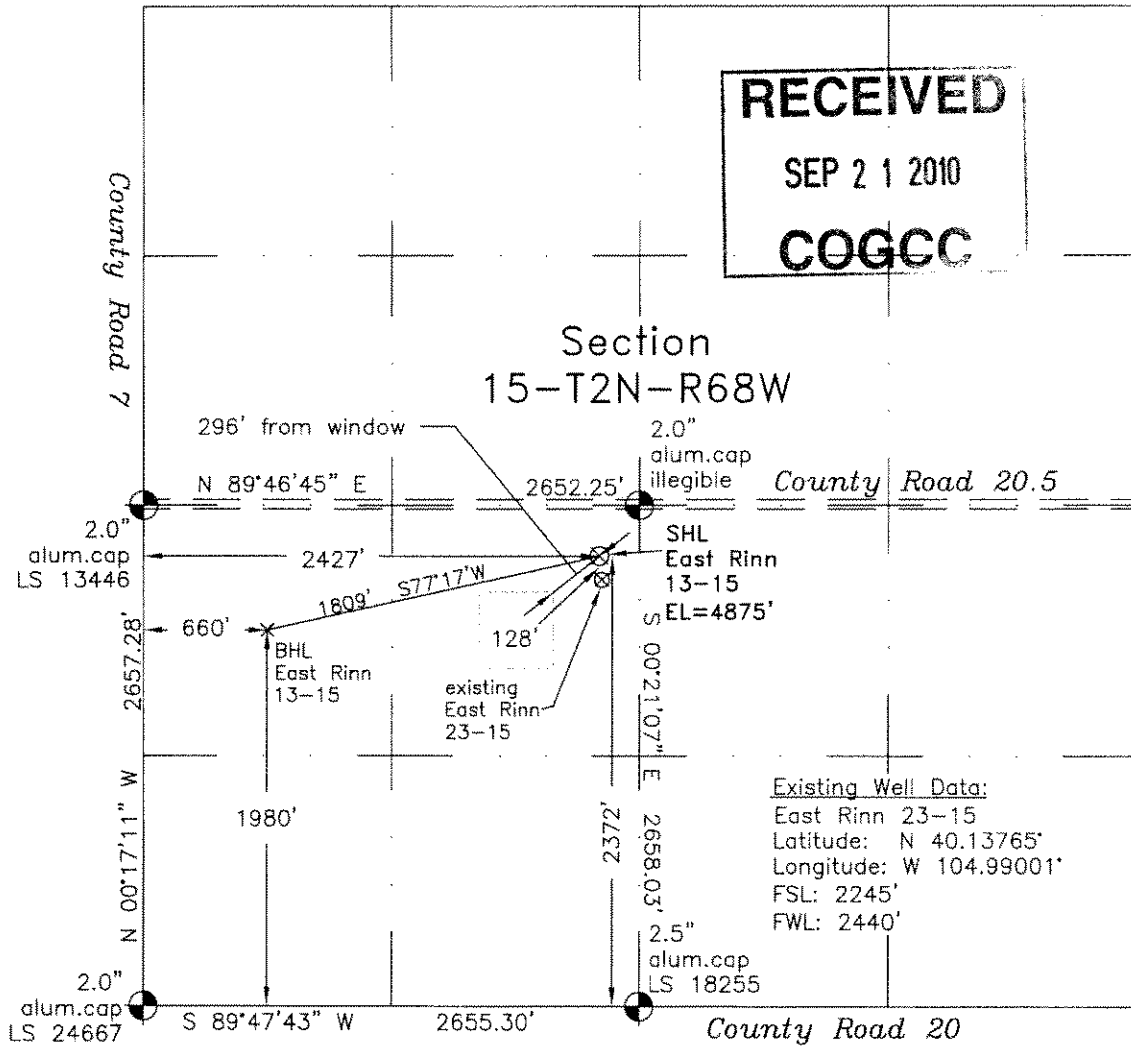
02622091

Plat

Surveying, Inc. 6760 North Franklin Avenue Loveland, Colorado 80538

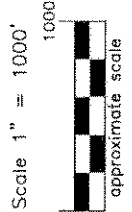
# WELL LOCATION CERTIFICATE

THIS MAP DOES NOT REPRESENT A BOUNDARY SURVEY



**RECEIVED**  
 SEP 21 2010  
**COGCC**

I-25 Frontage Road



LEGEND  
 — found survey monument  
 — calculated dimension  
 (c)

Existing Well Data:  
 East Rinn 23-15  
 Latitude: N 40.13765°  
 Longitude: W 104.99001°  
 FSL: 2245'  
 FWL: 2440'

In accordance with a request from Dave Bale of EnCana Oil & Gas (USA) Inc., Frederick Land Surveying, Inc. has determined the location of the **East Rinn 13-15** well site to be SHL: 2372' FSL and 2427' FWL, (BHL 1980' FSL and 660' FWL), as measured at ninety (90) degrees from the section lines of Section 15, Township 2 North, Range 68 West of the 6th Principal Meridian, Town of Frederick, Weld County Colorado.

Proposed Surface Hole Data:

Latitude: N 40.13799° BHL(40.13693°)  
 Longitude: W 104.99006° BHL(104.99638°)  
 Nearest: Building 375'(occupied) southwest  
 Above Ground Utility 322' northeast  
 Property Line 166' east  
 Railroad 15,400' northwest  
 Public Road 273' north  
 PDOP: 1.3

Notes:

- 1) Bearings and distances based on NAD 83 Colorado North State Plane Coordinates using RTK GPS observations taken 1/22/10 by operator Craig Burke.
- 2) Conversion factor to ground (1.000274028).
- 3) Elevations based on NAVD 88 GPS heights and Geoid 2003 corrections.
- 4) See improvement map for visible improvements within 400 feet.
- 5) The location falls on residential land.

I hereby certify that this Well Location Certificate was prepared by me or under my direct supervision on 9/26/10 for and on behalf of EnCana Oil & Gas (USA) Inc. that it is a Land Survey plat and that it is not to be relied upon for establishment of fences, buildings, or other future improvement lines.

*Alex Ronald*  
 Alex Ronald, Surveyor #34176  
 Job #: 10001003 3-3-2010

**NOTICE:** According to Colorado law you must commence any legal action based upon any defect in this W.L.C. within three years after you first discover such defect. In no event may any action based upon any defect in this W.L.C. be commenced more than ten years from this said date of the certification shown hereon.