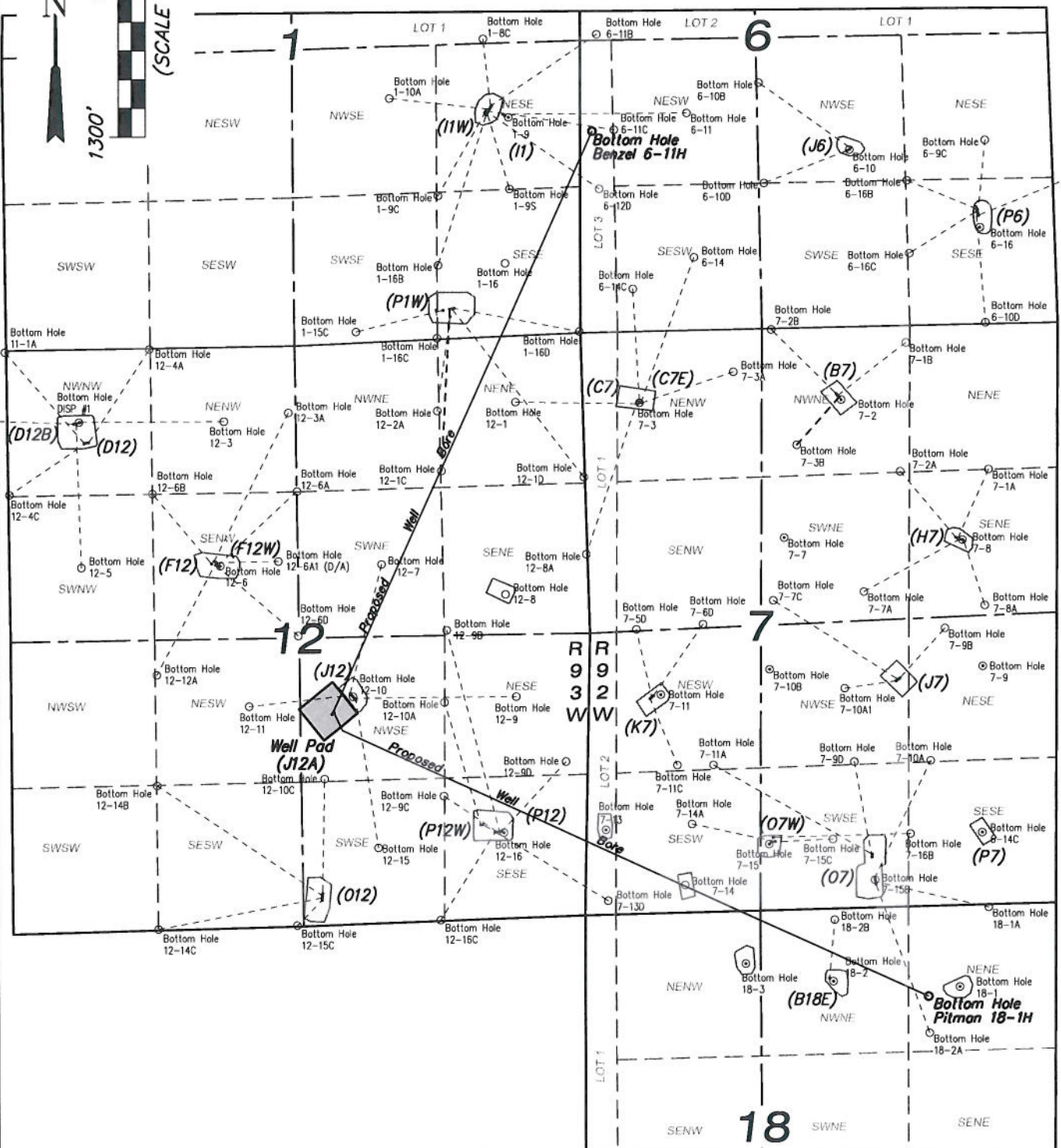
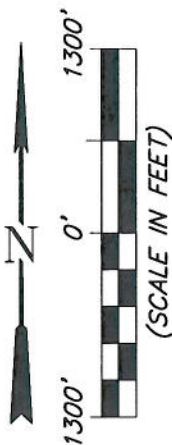


MULTI-WELL PLAN EnCana Oil & Gas (USA) Inc.

J12A Well Pad

Section 12

T7S, R93W, 6th P.M.

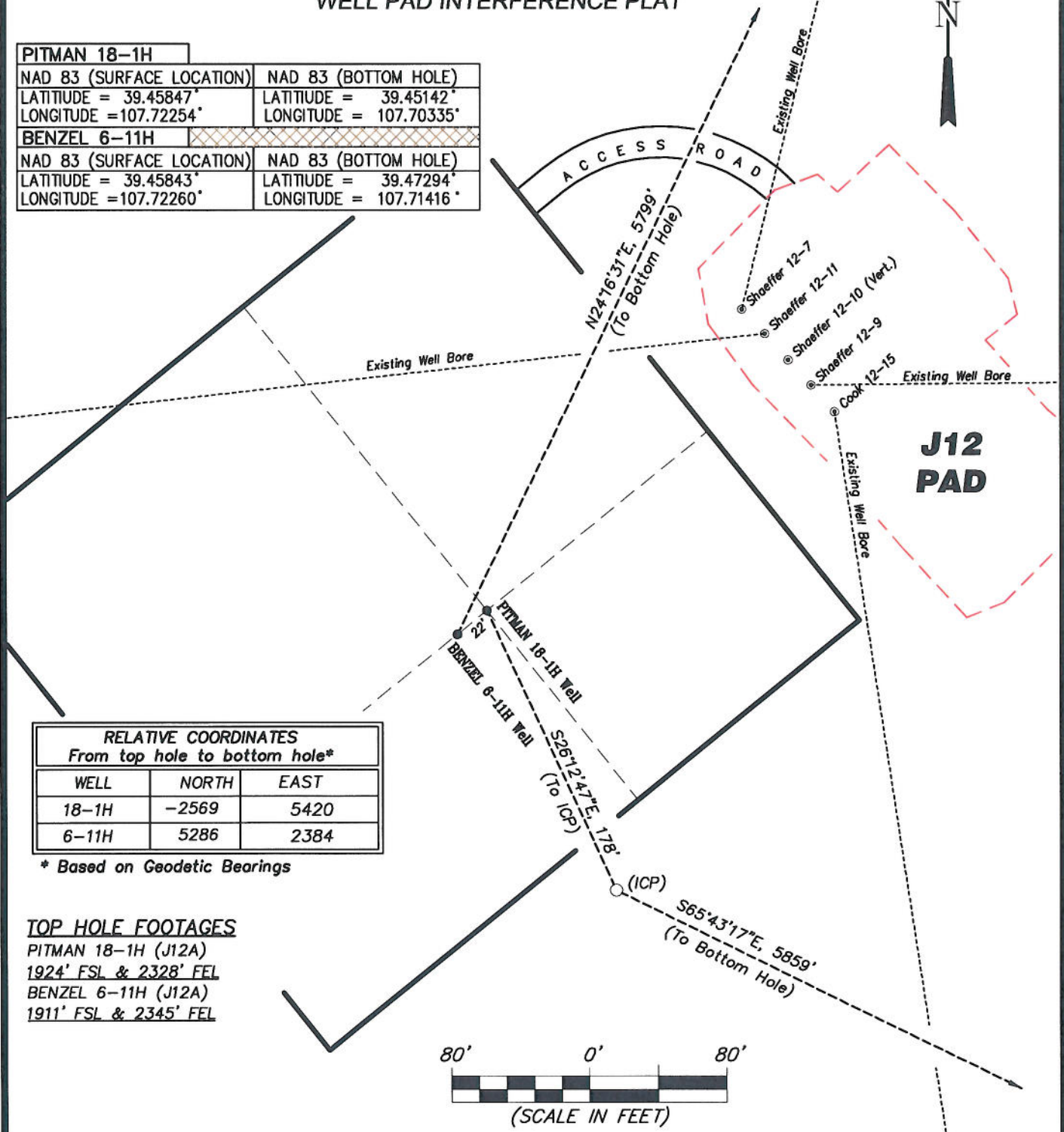


906 Main Street
Evanston, Wyoming 82930
Phone No. (307) 789-4545

Multi-Well Plan		Scale: 1" = 1300'	SHEET
Project No.	10-04-66	Date Surveyed: 8/12/10	1
Date Drawn: 9/07/10	Latest Revision Date: 10/14/10		OF 10

EnCana Oil & Gas (USA) Inc.
J12A Well Pad
Section 12, T7S, R93W, 6th P.M.
WELL PAD INTERFERENCE PLAT

PITMAN 18-1H	
NAD 83 (SURFACE LOCATION)	NAD 83 (BOTTOM HOLE)
LATITUDE = 39.45847°	LATITUDE = 39.45142°
LONGITUDE = 107.72254°	LONGITUDE = 107.70335°
BENZEL 6-11H	
NAD 83 (SURFACE LOCATION)	NAD 83 (BOTTOM HOLE)
LATITUDE = 39.45843°	LATITUDE = 39.47294°
LONGITUDE = 107.72260°	LONGITUDE = 107.71416°

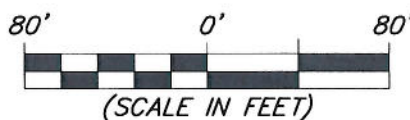


RELATIVE COORDINATES From top hole to bottom hole*		
WELL	NORTH	EAST
18-1H	-2569	5420
6-11H	5286	2384

* Based on Geodetic Bearings

TOP HOLE FOOTAGES

PITMAN 18-1H (J12A)
 1924' FSL & 2328' FEL
 BENZEL 6-11H (J12A)
 1911' FSL & 2345' FEL



906 Main Street
 Evanston, Wyoming 82930
 Phone No. (307) 789-4545

Interference Plat		Scale: 1" = 80'	SHEET 2 OF 10
Project No.	10-04-66	Date Surveyed: 8/12/10	
Date Drawn: 9/07/10	Latest Revision Date: 10/14/10		