

22

R96W

22

T6S, R96W

23

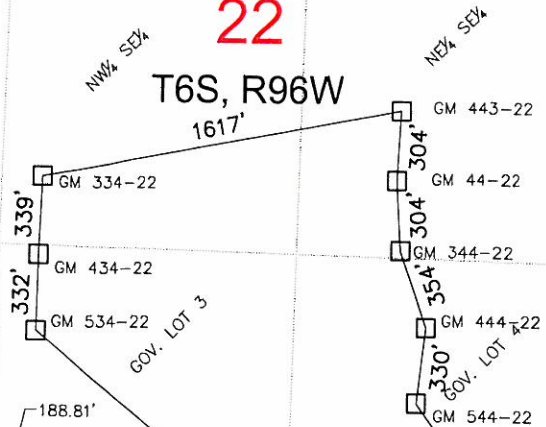
T6S, R96W

N

1" = 800'

Scale in feet

800 400 0 800



S88°21'56"E 2693.24'

2522'

GOV. LOT 2

400' BUFFER ZONE

GOV. LOT 7

27

T6S, R96W

239.03'

23

27

23

26

27

23

26

27

23

26

27

23

26

27

23

26

27

23

26

27

23

26

27

23

26

27

23

26

27

23

26

27

23

26

27

1384'

1015'

S42°53'58"E

2228.71'

S1°34'22"W

GOV. LOT 2

GOV. LOT 1

GOV. LOT 2

GOV. LOT 1

GOV. LOT 2

GOV. LOT 1

GOV. LOT 2

GOV. LOT 1

GOV. LOT 2

GOV. LOT 1

GOV. LOT 2

GOV. LOT 1

GOV. LOT 2

GOV. LOT 1

GOV. LOT 2

GOV. LOT 1

GOV. LOT 2

GOV. LOT 1

GOV. LOT 2

GOV. LOT 1

GOV. LOT 2

GOV. LOT 1

GOV. LOT 2

GOV. LOT 1

GOV. LOT 2

GOV. LOT 1

GOV. LOT 2

CURRENT LAND USE

CROP LAND	X	NON-CROP LAND	SUBDIVIDED
IRRIGATED	X	RANGE LAND	INDUSTRIAL
DRY LAND		TIMBER	COMMERCIAL
IMPROVED PASTURE		RECREATIONAL	RESIDENTIAL
HAY MEADOW		OTHER (describe):	
CRP			

DATE REVISED

2010-10-20

VISIBLE IMPROVEMENTS FROM
GM GM 421-26

	Bearing	Distance
Building	S 28° 10' 57"W	6635
Public Road	S 14° 05' 03"W	7669
Above Grnd Util.	S 25° 27' 33"W	5395
Railroad	S 10° 45' 40"W	9411
Property Line	S 42° 53' 58"E	1015

DEL-MONT CONSULTANTS IS PROVIDING GRADING DESIGN FOR THIS PROJECT THAT PROVIDES DIMENSIONS AND VOLUME INFORMATION FOR CONSTRUCTION.



DEL-MONT CONSULTANTS, INC.
ENGINEERING • SURVEYING • PLANNING
200 Colorado Ave. • Lakewood, CO 80401 • (303) 969-2551 • (303) 969-2552 fax
www.delmont-consultants.com • info@delmont-consultants.com

SECTIONS 22,23,26&27, T6S, R96W, 6TH P.M.
LOCATION

WELL PAD MV 23-27
GARFIELD COUNTY, CO
WILLIAMS PRODUCTION, RMT

DMC JOB NO.

10030

DATE ISSUED

2008-11-04

DATE SURVEYED

2008-09-29

PLAT

6 of 9

DESIGNED BY

MGW

SCALE

1"=800'

CHECKED BY

KS

FILE NAME

10030-CM23-27 PAD SITE