



ANADARKO PETROLEUM CORP.

ANADARKO COLORADO NORTHERN ZONE NAD 83

WELD_Reigle

REIGLE 22-4

REIGLE 22-4

Plan: REIGLE 22-4 (wp01)

Standard Planning Report

04 October, 2010





Project: ANADARKO COLORADO NORTHERN ZONE NAD 83
 Site: WELD Reigle
 Well: REIGLE 22-4
 Wellbore: REIGLE 22-4
 Section:
 SHL:
 Design: REIGLE 22-4 (wp01)
 Latitude: 40° 10' 5.891 N
 Longitude: 104° 40' 8.947 W
 GL: 4860.0
 KB: plat GL @ 4860.0ft



Weatherford



Azimuths to True North
 Magnetic North: 8.85°
 Magnetic Field
 Strength: 53075.9snT
 Dip Angle: 66.92°
 Date: 9/30/2010
 Model: BGGM2010

FORMATION TOP DETAILS

TVDPath	MDPath	Formation
4161.0	4377.1	PK
4513.0	4731.7	SX
6907.0	7125.8	NIO
7192.0	7410.8	CD
7279.0	7497.8	GH
7651.0	7869.8	J
7861.0	8079.8	DK

CASING DETAILS

TVD	MD	Name	Size
700.0	700.0	9 5/8"	9-5/8

SECTION DETAILS

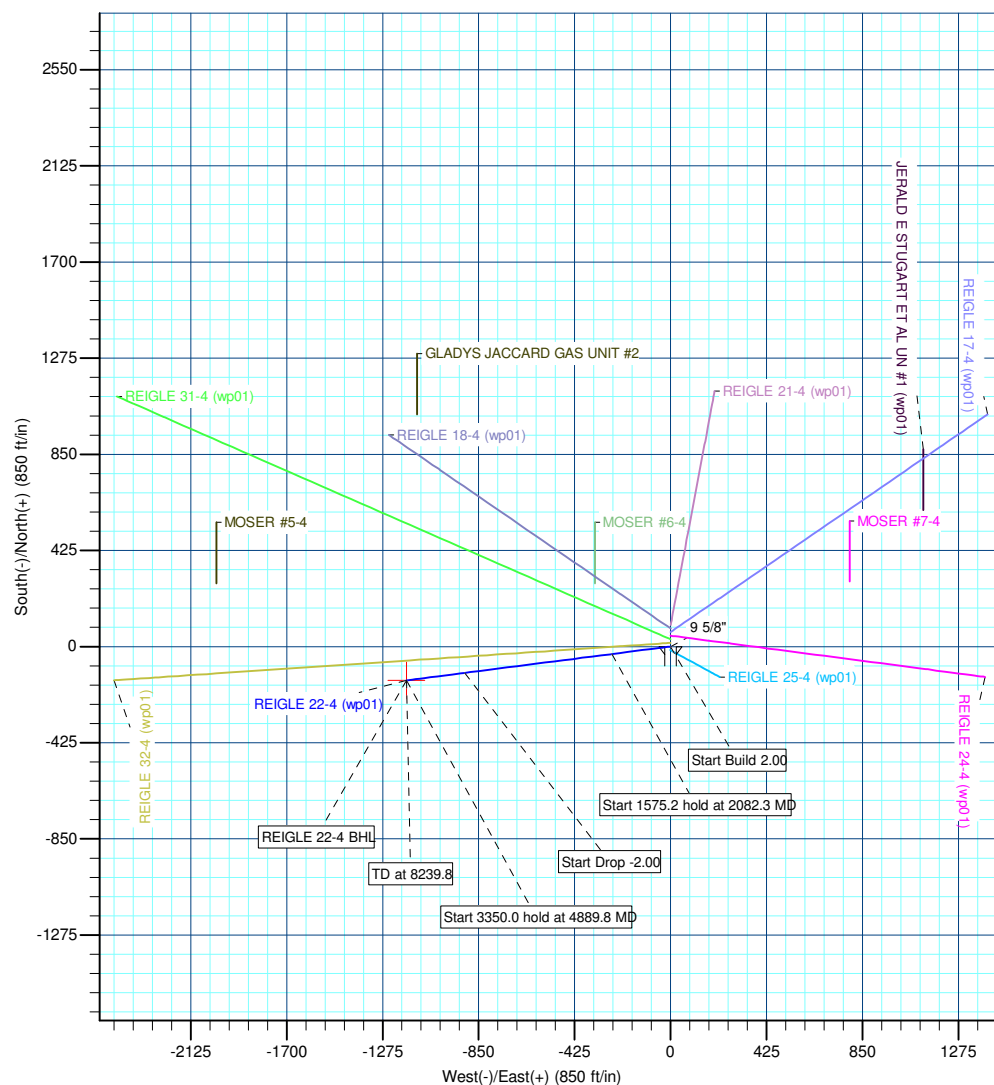
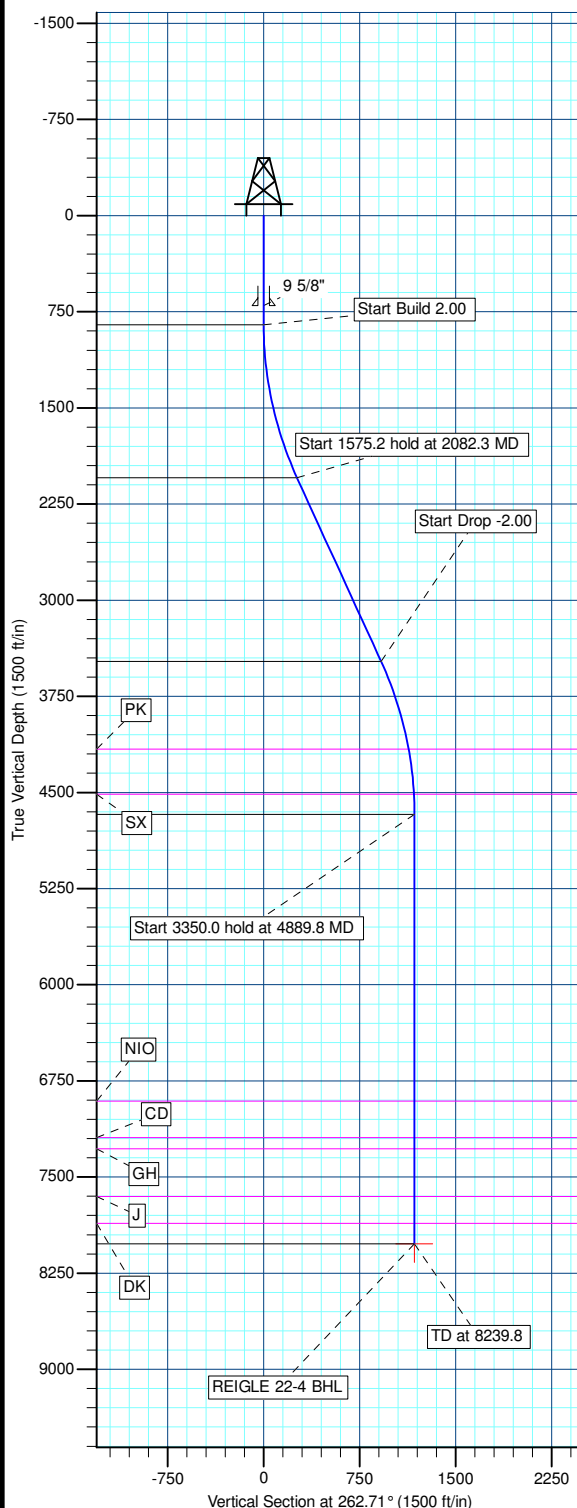
MD	Inc	Azi	TVD	+N/-S	+E/-W	DLeg	TFace	VSec	Annotation
0.0	0.00	0.00	0.0	0.0	0.0	0.00	0.00	0.0	
850.0	0.00	0.00	850.0	0.0	0.0	0.00	0.00	0.0	
2082.3	24.65	262.71	2044.6	-33.1	-258.9	2.00	262.71	261.0	
3657.5	24.65	262.71	3476.4	-116.5	-910.4	0.00	0.00	917.8	
4889.8	0.00	0.00	4671.0	-149.7	-1169.3	2.00	180.00	1178.8	
8239.8	0.00	0.00	8021.0	-149.7	-1169.3	0.00	0.00	1178.8	

WELLBORE TARGET DETAILS (MAP CO-ORDINATES AND LAT/LONG)

Name	TVD	+N/-S	+E/-W	Latitude	Longitude	Shape
REIGLE 22-4 BHL	8021.0	-149.7	-1169.3	40° 10' 4.411 N	104° 40' 24.010 W	Point

WELL DETAILS: REIGLE 22-4

+N/-S	+E/-W	Northing	Ground Level: Easting	4860.0 Latitude	Longitude	Slot
0.0	0.0	1305243.56	3232187.21	40° 10' 5.891 N	104° 40' 8.947 W	



Created By: Jason Daguitera Date: 7:59, October 04 2010

Database:	EDM 2003.21 Single User Db	Local Co-ordinate Reference:	Well REIGLE 22-4
Company:	ANADARKO PETROLEUM CORP.	TVD Reference:	plat GL @ 4860.0ft
Project:	ANADARKO COLORADO NORTHERN ZONE NAD 83	MD Reference:	plat GL @ 4860.0ft
Site:	WELD_Reigle	North Reference:	True
Well:	REIGLE 22-4	Survey Calculation Method:	Minimum Curvature
Wellbore:	REIGLE 22-4		
Design:	REIGLE 22-4 (wp01)		

Project	ANADARKO COLORADO NORTHERN ZONE NAD 83, ROCKIES, ROCKIES		
Map System:	US State Plane 1983	System Datum:	Mean Sea Level
Geo Datum:	North American Datum 1983		
Map Zone:	Colorado Northern Zone		

Site	WELD_Reigle		
Site Position:		Northing:	1,305,307.68ft
From:	Lat/Long	Easting:	3,232,187.17ft
Position Uncertainty:	0.0 ft	Slot Radius:	"
		Latitude:	40° 10' 6.524 N
		Longitude:	104° 40' 8.940 W
		Grid Convergence:	0.54 °

Well	REIGLE 22-4		
Well Position	+N/-S	-64.1 ft	Northing:
	+E/-W	-0.6 ft	Easting:
Position Uncertainty		0.0 ft	Wellhead Elevation:
			ft
			Latitude:
			40° 10' 5.891 N
			Longitude:
			104° 40' 8.947 W
			Ground Level:
			4,860.0 ft

Wellbore	REIGLE 22-4				
Magnetics	Model Name	Sample Date	Declination (°)	Dip Angle (°)	Field Strength (nT)
	BGGM2010	9/30/2010	8.85	66.92	53,076

Design	REIGLE 22-4 (wp01)			
Audit Notes:				
Version:	Phase:	PLAN	Tie On Depth:	0.0
Vertical Section:	Depth From (TVD) (ft)	+N/-S (ft)	+E/-W (ft)	Direction (°)
	0.0	0.0	0.0	262.71

Plan Sections										
Measured Depth (ft)	Inclination (°)	Azimuth (°)	Vertical Depth (ft)	+N/-S (ft)	+E/-W (ft)	Dogleg Rate (°/100ft)	Build Rate (°/100ft)	Turn Rate (°/100ft)	TFO (°)	Target
0.0	0.00	0.00	0.0	0.0	0.0	0.00	0.00	0.00	0.00	
850.0	0.00	0.00	850.0	0.0	0.0	0.00	0.00	0.00	0.00	
2,082.3	24.65	262.71	2,044.6	-33.1	-258.9	2.00	2.00	0.00	262.71	
3,657.5	24.65	262.71	3,476.4	-116.5	-910.4	0.00	0.00	0.00	0.00	
4,889.8	0.00	0.00	4,671.0	-149.7	-1,169.3	2.00	-2.00	0.00	180.00	
8,239.8	0.00	0.00	8,021.0	-149.7	-1,169.3	0.00	0.00	0.00	0.00	REIGLE 22-4 BHL

Database:	EDM 2003.21 Single User Db	Local Co-ordinate Reference:	Well REIGLE 22-4
Company:	ANADARKO PETROLEUM CORP.	TVD Reference:	plat GL @ 4860.0ft
Project:	ANADARKO COLORADO NORTHERN ZONE	MD Reference:	plat GL @ 4860.0ft
	NAD 83		
Site:	WELD_Reigle	North Reference:	True
Well:	REIGLE 22-4	Survey Calculation Method:	Minimum Curvature
Wellbore:	REIGLE 22-4		
Design:	REIGLE 22-4 (wp01)		

Planned Survey										
Measured Depth (ft)	Inclination (°)	Azimuth (°)	Vertical Depth (ft)	+N/-S (ft)	+E/-W (ft)	Vertical Section (ft)	Dogleg Rate (°/100ft)	Build Rate (°/100ft)	Turn Rate (°/100ft)	
0.0	0.00	0.00	0.0	0.0	0.0	0.0	0.00	0.00	0.00	
100.0	0.00	0.00	100.0	0.0	0.0	0.0	0.00	0.00	0.00	
200.0	0.00	0.00	200.0	0.0	0.0	0.0	0.00	0.00	0.00	
300.0	0.00	0.00	300.0	0.0	0.0	0.0	0.00	0.00	0.00	
400.0	0.00	0.00	400.0	0.0	0.0	0.0	0.00	0.00	0.00	
500.0	0.00	0.00	500.0	0.0	0.0	0.0	0.00	0.00	0.00	
600.0	0.00	0.00	600.0	0.0	0.0	0.0	0.00	0.00	0.00	
9 5/8"										
700.0	0.00	0.00	700.0	0.0	0.0	0.0	0.00	0.00	0.00	
800.0	0.00	0.00	800.0	0.0	0.0	0.0	0.00	0.00	0.00	
850.0	0.00	0.00	850.0	0.0	0.0	0.0	0.00	0.00	0.00	
900.0	1.00	262.71	900.0	-0.1	-0.4	0.4	2.00	2.00	0.00	
1,000.0	3.00	262.71	999.9	-0.5	-3.9	3.9	2.00	2.00	0.00	
1,100.0	5.00	262.71	1,099.7	-1.4	-10.8	10.9	2.00	2.00	0.00	
1,200.0	7.00	262.71	1,199.1	-2.7	-21.2	21.4	2.00	2.00	0.00	
1,300.0	9.00	262.71	1,298.2	-4.5	-35.0	35.3	2.00	2.00	0.00	
1,400.0	11.00	262.71	1,396.6	-6.7	-52.2	52.6	2.00	2.00	0.00	
1,500.0	13.00	262.71	1,494.4	-9.3	-72.8	73.4	2.00	2.00	0.00	
1,600.0	15.00	262.71	1,591.5	-12.4	-96.8	97.6	2.00	2.00	0.00	
1,700.0	17.00	262.71	1,687.6	-15.9	-124.2	125.2	2.00	2.00	0.00	
1,800.0	19.00	262.71	1,782.7	-19.8	-154.8	156.1	2.00	2.00	0.00	
1,900.0	21.00	262.71	1,876.6	-24.2	-188.7	190.3	2.00	2.00	0.00	
2,000.0	23.00	262.71	1,969.4	-28.9	-225.9	227.7	2.00	2.00	0.00	
2,082.3	24.65	262.71	2,044.6	-33.1	-258.9	261.0	2.00	2.00	0.00	
2,100.0	24.65	262.71	2,060.7	-34.1	-266.2	268.4	0.00	0.00	0.00	
2,200.0	24.65	262.71	2,151.6	-39.4	-307.5	310.1	0.00	0.00	0.00	
2,300.0	24.65	262.71	2,242.5	-44.7	-348.9	351.8	0.00	0.00	0.00	
2,400.0	24.65	262.71	2,333.4	-50.0	-390.3	393.5	0.00	0.00	0.00	
2,500.0	24.65	262.71	2,424.3	-55.3	-431.6	435.2	0.00	0.00	0.00	
2,600.0	24.65	262.71	2,515.2	-60.6	-473.0	476.9	0.00	0.00	0.00	
2,700.0	24.65	262.71	2,606.1	-65.8	-514.4	518.6	0.00	0.00	0.00	
2,800.0	24.65	262.71	2,697.0	-71.1	-555.7	560.3	0.00	0.00	0.00	
2,900.0	24.65	262.71	2,787.9	-76.4	-597.1	602.0	0.00	0.00	0.00	
3,000.0	24.65	262.71	2,878.7	-81.7	-638.5	643.7	0.00	0.00	0.00	
3,100.0	24.65	262.71	2,969.6	-87.0	-679.8	685.4	0.00	0.00	0.00	
3,200.0	24.65	262.71	3,060.5	-92.3	-721.2	727.1	0.00	0.00	0.00	
3,300.0	24.65	262.71	3,151.4	-97.6	-762.5	768.8	0.00	0.00	0.00	
3,400.0	24.65	262.71	3,242.3	-102.9	-803.9	810.5	0.00	0.00	0.00	
3,500.0	24.65	262.71	3,333.2	-108.2	-845.3	852.2	0.00	0.00	0.00	
3,600.0	24.65	262.71	3,424.1	-113.5	-886.6	893.9	0.00	0.00	0.00	
3,657.5	24.65	262.71	3,476.4	-116.5	-910.4	917.8	0.00	0.00	0.00	
3,700.0	23.80	262.71	3,515.1	-118.8	-927.7	935.3	2.00	-2.00	0.00	
3,800.0	21.80	262.71	3,607.3	-123.7	-966.1	974.0	2.00	-2.00	0.00	
3,900.0	19.80	262.71	3,700.8	-128.2	-1,001.4	1,009.5	2.00	-2.00	0.00	
4,000.0	17.80	262.71	3,795.4	-132.3	-1,033.3	1,041.7	2.00	-2.00	0.00	
4,100.0	15.80	262.71	3,891.2	-135.9	-1,062.0	1,070.6	2.00	-2.00	0.00	
4,200.0	13.80	262.71	3,987.8	-139.2	-1,087.3	1,096.2	2.00	-2.00	0.00	
4,300.0	11.80	262.71	4,085.4	-142.0	-1,109.3	1,118.3	2.00	-2.00	0.00	
PK										
4,377.1	10.25	262.71	4,161.0	-143.9	-1,123.9	1,133.1	2.00	-2.00	0.00	
4,400.0	9.80	262.71	4,183.6	-144.4	-1,127.8	1,137.1	2.00	-2.00	0.00	
4,500.0	7.80	262.71	4,282.4	-146.3	-1,143.0	1,152.3	2.00	-2.00	0.00	
4,600.0	5.80	262.71	4,381.7	-147.8	-1,154.8	1,164.2	2.00	-2.00	0.00	

Database:	EDM 2003.21 Single User Db	Local Co-ordinate Reference:	Well REIGLE 22-4
Company:	ANADARKO PETROLEUM CORP.	TVD Reference:	plat GL @ 4860.0ft
Project:	ANADARKO COLORADO NORTHERN ZONE	MD Reference:	plat GL @ 4860.0ft
Site:	WELD_Reigle	North Reference:	True
Well:	REIGLE 22-4	Survey Calculation Method:	Minimum Curvature
Wellbore:	REIGLE 22-4		
Design:	REIGLE 22-4 (wp01)		

Planned Survey										
Measured Depth (ft)	Inclination (°)	Azimuth (°)	Vertical Depth (ft)	+N/-S (ft)	+E/-W (ft)	Vertical Section (ft)	Dogleg Rate (°/100ft)	Build Rate (°/100ft)	Turn Rate (°/100ft)	
4,700.0	3.80	262.71	4,481.3	-148.9	-1,163.0	1,172.5	2.00	-2.00	0.00	
SX										
4,731.7	3.16	262.71	4,513.0	-149.1	-1,165.0	1,174.5	2.00	-2.00	0.00	
4,800.0	1.80	262.71	4,581.2	-149.5	-1,167.9	1,177.4	2.00	-2.00	0.00	
4,889.8	0.00	0.00	4,671.0	-149.7	-1,169.3	1,178.8	2.00	-2.00	0.00	
4,900.0	0.00	0.00	4,681.2	-149.7	-1,169.3	1,178.8	0.00	0.00	0.00	
5,000.0	0.00	0.00	4,781.2	-149.7	-1,169.3	1,178.8	0.00	0.00	0.00	
5,100.0	0.00	0.00	4,881.2	-149.7	-1,169.3	1,178.8	0.00	0.00	0.00	
5,200.0	0.00	0.00	4,981.2	-149.7	-1,169.3	1,178.8	0.00	0.00	0.00	
5,300.0	0.00	0.00	5,081.2	-149.7	-1,169.3	1,178.8	0.00	0.00	0.00	
5,400.0	0.00	0.00	5,181.2	-149.7	-1,169.3	1,178.8	0.00	0.00	0.00	
5,500.0	0.00	0.00	5,281.2	-149.7	-1,169.3	1,178.8	0.00	0.00	0.00	
5,600.0	0.00	0.00	5,381.2	-149.7	-1,169.3	1,178.8	0.00	0.00	0.00	
5,700.0	0.00	0.00	5,481.2	-149.7	-1,169.3	1,178.8	0.00	0.00	0.00	
5,800.0	0.00	0.00	5,581.2	-149.7	-1,169.3	1,178.8	0.00	0.00	0.00	
5,900.0	0.00	0.00	5,681.2	-149.7	-1,169.3	1,178.8	0.00	0.00	0.00	
6,000.0	0.00	0.00	5,781.2	-149.7	-1,169.3	1,178.8	0.00	0.00	0.00	
6,100.0	0.00	0.00	5,881.2	-149.7	-1,169.3	1,178.8	0.00	0.00	0.00	
6,200.0	0.00	0.00	5,981.2	-149.7	-1,169.3	1,178.8	0.00	0.00	0.00	
6,300.0	0.00	0.00	6,081.2	-149.7	-1,169.3	1,178.8	0.00	0.00	0.00	
6,400.0	0.00	0.00	6,181.2	-149.7	-1,169.3	1,178.8	0.00	0.00	0.00	
6,500.0	0.00	0.00	6,281.2	-149.7	-1,169.3	1,178.8	0.00	0.00	0.00	
6,600.0	0.00	0.00	6,381.2	-149.7	-1,169.3	1,178.8	0.00	0.00	0.00	
6,700.0	0.00	0.00	6,481.2	-149.7	-1,169.3	1,178.8	0.00	0.00	0.00	
6,800.0	0.00	0.00	6,581.2	-149.7	-1,169.3	1,178.8	0.00	0.00	0.00	
6,900.0	0.00	0.00	6,681.2	-149.7	-1,169.3	1,178.8	0.00	0.00	0.00	
7,000.0	0.00	0.00	6,781.2	-149.7	-1,169.3	1,178.8	0.00	0.00	0.00	
7,100.0	0.00	0.00	6,881.2	-149.7	-1,169.3	1,178.8	0.00	0.00	0.00	
NIO										
7,125.8	0.00	0.00	6,907.0	-149.7	-1,169.3	1,178.8	0.00	0.00	0.00	
7,200.0	0.00	0.00	6,981.2	-149.7	-1,169.3	1,178.8	0.00	0.00	0.00	
7,300.0	0.00	0.00	7,081.2	-149.7	-1,169.3	1,178.8	0.00	0.00	0.00	
7,400.0	0.00	0.00	7,181.2	-149.7	-1,169.3	1,178.8	0.00	0.00	0.00	
CD										
7,410.8	0.00	0.00	7,192.0	-149.7	-1,169.3	1,178.8	0.00	0.00	0.00	
GH										
7,497.8	0.00	0.00	7,279.0	-149.7	-1,169.3	1,178.8	0.00	0.00	0.00	
7,500.0	0.00	0.00	7,281.2	-149.7	-1,169.3	1,178.8	0.00	0.00	0.00	
7,600.0	0.00	0.00	7,381.2	-149.7	-1,169.3	1,178.8	0.00	0.00	0.00	
7,700.0	0.00	0.00	7,481.2	-149.7	-1,169.3	1,178.8	0.00	0.00	0.00	
7,800.0	0.00	0.00	7,581.2	-149.7	-1,169.3	1,178.8	0.00	0.00	0.00	
J										
7,869.8	0.00	0.00	7,651.0	-149.7	-1,169.3	1,178.8	0.00	0.00	0.00	
7,900.0	0.00	0.00	7,681.2	-149.7	-1,169.3	1,178.8	0.00	0.00	0.00	
8,000.0	0.00	0.00	7,781.2	-149.7	-1,169.3	1,178.8	0.00	0.00	0.00	
DK										
8,079.8	0.00	0.00	7,861.0	-149.7	-1,169.3	1,178.8	0.00	0.00	0.00	
8,100.0	0.00	0.00	7,881.2	-149.7	-1,169.3	1,178.8	0.00	0.00	0.00	
8,200.0	0.00	0.00	7,981.2	-149.7	-1,169.3	1,178.8	0.00	0.00	0.00	
8,239.8	0.00	0.00	8,021.0	-149.7	-1,169.3	1,178.8	0.00	0.00	0.00	

Database:	EDM 2003.21 Single User Db	Local Co-ordinate Reference:	Well REIGLE 22-4
Company:	ANADARKO PETROLEUM CORP.	TVD Reference:	plat GL @ 4860.0ft
Project:	ANADARKO COLORADO NORTHERN ZONE NAD 83	MD Reference:	plat GL @ 4860.0ft
Site:	WELD_Reigle	North Reference:	True
Well:	REIGLE 22-4	Survey Calculation Method:	Minimum Curvature
Wellbore:	REIGLE 22-4		
Design:	REIGLE 22-4 (wp01)		

Design Targets

Target Name

- hit/miss target	Dip Angle (°)	Dip Dir. (°)	TVD (ft)	+N/-S (ft)	+E/-W (ft)	Northing (ft)	Easting (ft)	Latitude	Longitude
- Shape									
REIGLE 22-4 BHL	0.00	0.00	8,021.0	-149.7	-1,169.3	1,305,082.92	3,231,019.39	40° 10' 4.411 N	104° 40' 24.010 W
- plan hits target center									
- Point									

Casing Points

Measured Depth (ft)	Vertical Depth (ft)	Name	Casing Diameter (")	Hole Diameter (")
700.0	700.0	9 5/8"	9-5/8	12-1/4

Formations

Measured Depth (ft)	Vertical Depth (ft)	Name	Lithology	Dip (°)	Dip Direction (°)
8,079.8	7,861.0	DK		0.00	
4,377.1	4,161.0	PK			
7,497.8	7,279.0	GH			
7,869.8	7,651.0	J			
4,731.7	4,513.0	SX			
7,410.8	7,192.0	CD			
7,125.8	6,907.0	NIO			



ANADARKO PETROLEUM CORP.

**ANADARKO COLORADO NORTHERN ZONE NAD 83
WELD_Reigle
REIGLE 22-4**

**REIGLE 22-4
REIGLE 22-4 (wp01)**

Anticollision Summary Report

04 October, 2010



Company:	ANADARKO PETROLEUM CORP.	Local Co-ordinate Reference:	Well REIGLE 22-4
Project:	ANADARKO COLORADO NORTHERN ZONE NAD 83	TVD Reference:	plat GL @ 4860.0ft
Reference Site:	WELD_Reigle	MD Reference:	plat GL @ 4860.0ft
Site Error:	0.0ft	North Reference:	True
Reference Well:	REIGLE 22-4	Survey Calculation Method:	Minimum Curvature
Well Error:	0.0ft	Output errors are at	2.00 sigma
Reference Wellbore	REIGLE 22-4	Database:	EDM 2003.21 Single User Db
Reference Design:	REIGLE 22-4 (wp01)	Offset TVD Reference:	Offset Datum

Reference	REIGLE 22-4 (wp01)		
Filter type:	NO GLOBAL FILTER: Using user defined selection & filtering criteria		
Interpolation Method:	MD Interval 100.0ft	Error Model:	ISCWSA
Depth Range:	Unlimited	Scan Method:	Closest Approach 3D
Results Limited by:	Maximum center-center distance of 1,300.8ft	Error Surface:	Elliptical Conic
Warning Levels Evaluated at:	2.00 Sigma		

Survey Tool Program	Date	10/4/2010		
From (ft)	To (ft)	Survey (Wellbore)	Tool Name	Description
0.0	8,239.8	REIGLE 22-4 (wp01) (REIGLE 22-4)	MWD	MWD - Standard

Summary						
Site Name Offset Well - Wellbore - Design	Reference Measured Depth (ft)	Offset Measured Depth (ft)	Distance Between Centres (ft)	Distance Between Ellipses (ft)	Separation Factor	Warning
WELD_Reigle						
JERALD E STUGART ET AL UN #1 - JERALD E STUGA	0.0	0.0	1,271.6			
MOSER #7-4 - MOSER #7-4 - MOSER #7-4	0.0	0.0	844.4	844.4	10,000.000 CC, ES	
REIGLE 31-4 - REIGLE 31-4 - REIGLE 31-4 (wp01)	266.3	267.3	32.1	31.1	32.889 CC	
REIGLE 31-4 - REIGLE 31-4 - REIGLE 31-4 (wp01)	300.0	301.0	32.1	30.9	28.470 ES	
REIGLE 32-4 - REIGLE 32-4 - REIGLE 32-4 (wp01)	370.1	370.1	16.0	14.6	11.171 CC	
REIGLE 32-4 - REIGLE 32-4 - REIGLE 32-4 (wp01)	400.0	400.0	16.0	14.5	10.257 ES	
REIGLE 32-4 - REIGLE 32-4 - REIGLE 32-4 (wp01)	500.0	499.6	17.7	15.7	8.826 SF	
REIGLE 31-4 - REIGLE 31-4 - REIGLE 31-4 (wp01)	600.0	597.7	43.6	41.2	17.566 SF	
REIGLE 17-4 - REIGLE 17-4 - REIGLE 17-4 (wp01)	800.0	801.0	64.1	60.7	19.004 CC	
REIGLE 18-4 - REIGLE 18-4 - REIGLE 18-4 (wp01)	800.0	801.0	79.8	76.4	23.648 CC	
REIGLE 21-4 - REIGLE 21-4 - REIGLE 21-4 (wp01)	800.0	801.0	95.8	92.4	28.398 CC, ES	
REIGLE 24-4 - REIGLE 24-4 - REIGLE 24-4 (wp01)	800.0	799.0	48.1	44.7	14.272 CC	
REIGLE 18-4 - REIGLE 18-4 - REIGLE 18-4 (wp01)	837.5	838.5	79.8	76.3	22.547 ES	
REIGLE 17-4 - REIGLE 17-4 - REIGLE 17-4 (wp01)	842.7	843.7	64.1	60.6	18.003 ES	
REIGLE 25-4 - REIGLE 25-4 - REIGLE 25-4 (wp01)	847.6	845.6	16.0	12.4	4.473 CC	
REIGLE 24-4 - REIGLE 24-4 - REIGLE 24-4 (wp01)	900.0	899.1	48.1	44.3	12.646 ES	
REIGLE 25-4 - REIGLE 25-4 - REIGLE 25-4 (wp01)	900.0	897.9	16.2	12.4	4.258 ES, SF	
REIGLE 17-4 - REIGLE 17-4 - REIGLE 17-4 (wp01)	1,000.0	998.7	67.3	63.0	15.924 SF	
JERALD E STUGART ET AL UN #1 - JERALD E STUGA	1,100.0	1,070.0	1,298.2	1,293.6	279.450 SF	
REIGLE 21-4 - REIGLE 21-4 - REIGLE 21-4 (wp01)	1,100.0	1,091.8	108.5	103.8	23.256 SF	
REIGLE 24-4 - REIGLE 24-4 - REIGLE 24-4 (wp01)	1,100.0	1,097.7	52.8	48.1	11.418 SF	
REIGLE 18-4 - REIGLE 18-4 - REIGLE 18-4 (wp01)	1,200.0	1,195.0	94.5	89.4	18.446 SF	
MOSER #6-4 - MOSER #6-4 - MOSER #6-4	2,077.1	2,028.9	387.8	376.5	34.383 CC	
MOSER #6-4 - MOSER #6-4 - MOSER #6-4	2,100.0	2,049.6	387.9	376.4	33.709 ES	
MOSER #7-4 - MOSER #7-4 - MOSER #7-4	2,500.0	2,411.9	1,296.8	1,285.5	115.549 SF	
GLADYS JACCARD GAS UNIT #2 - GLADYS JACCARD	3,550.6	3,337.5	1,276.0	1,248.9	47.142 CC	
GLADYS JACCARD GAS UNIT #2 - GLADYS JACCARD	3,600.0	3,382.3	1,276.2	1,248.5	46.199 ES	
GLADYS JACCARD GAS UNIT #2 - GLADYS JACCARD	4,200.0	3,944.8	1,300.1	1,267.6	40.030 SF	
MOSER #5-4 - MOSER #5-4 - MOSER #5-4	4,814.3	4,593.8	1,027.0	997.1	34.382 CC, ES	
MOSER #5-4 - MOSER #5-4 - MOSER #5-4	8,100.0	7,849.0	1,096.2	1,053.7	25.802 SF	
MOSER #6-4 - MOSER #6-4 - MOSER #6-4	8,100.0	7,819.0	1,090.3	1,050.6	27.449 SF	

Company:	ANADARKO PETROLEUM CORP.	Local Co-ordinate Reference:	Well REIGLE 22-4
Project:	ANADARKO COLORADO NORTHERN ZONE NAD 83	TVD Reference:	plat GL @ 4860.0ft
Reference Site:	WELD_Reigle	MD Reference:	plat GL @ 4860.0ft
Site Error:	0.0ft	North Reference:	True
Reference Well:	REIGLE 22-4	Survey Calculation Method:	Minimum Curvature
Well Error:	0.0ft	Output errors are at	2.00 sigma
Reference Wellbore	REIGLE 22-4	Database:	EDM 2003.21 Single User Db
Reference Design:	REIGLE 22-4 (wp01)	Offset TVD Reference:	Offset Datum

Reference Depths are relative to plat GL @ 4860.0ft

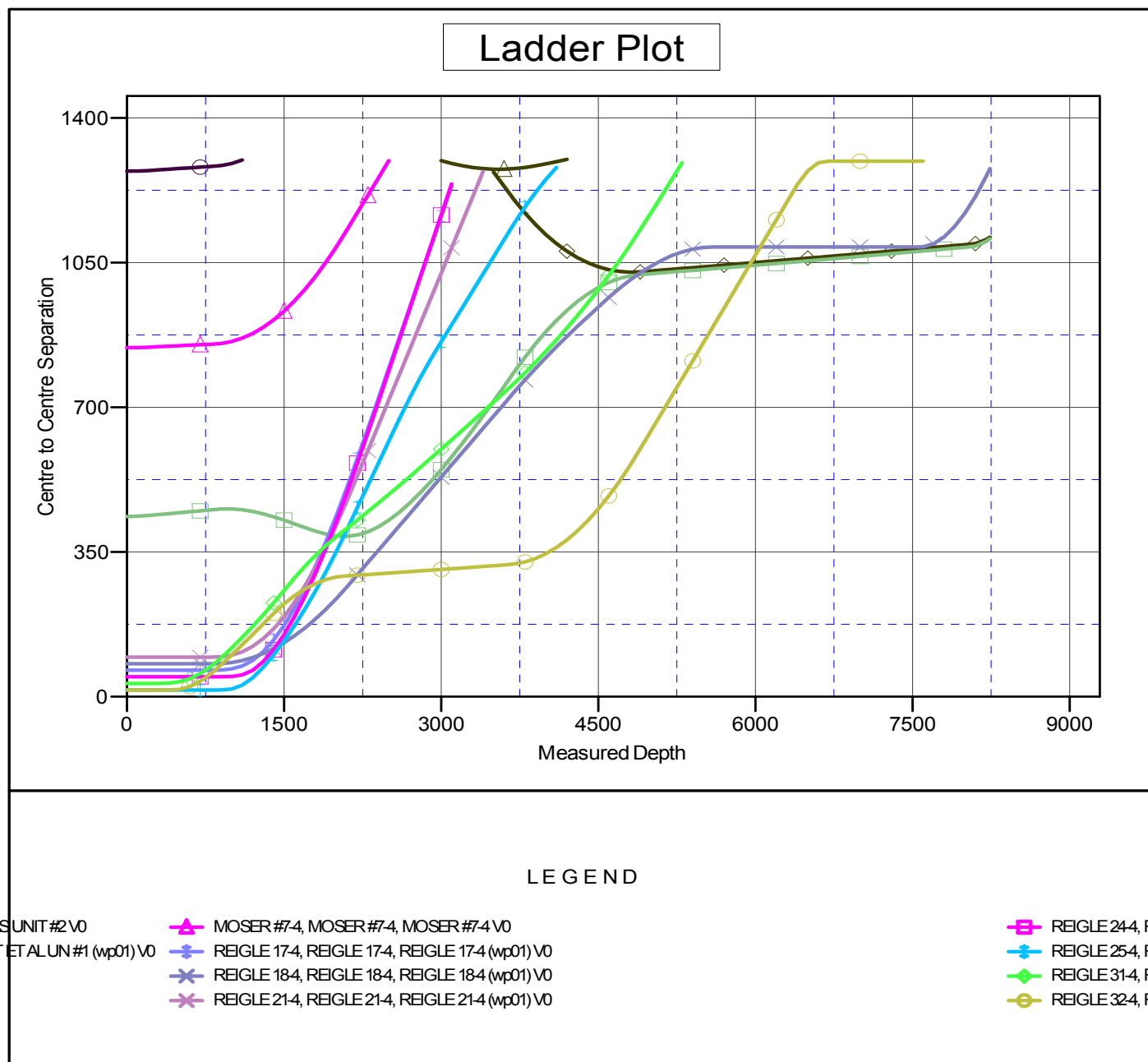
Offset Depths are relative to Offset Datum

Central Meridian is 105° 30' 0.000 W °

Coordinates are relative to: REIGLE 22-4

Coordinate System is US State Plane 1983, Colorado Northern Zone

Grid Convergence at Surface is: 0.54°

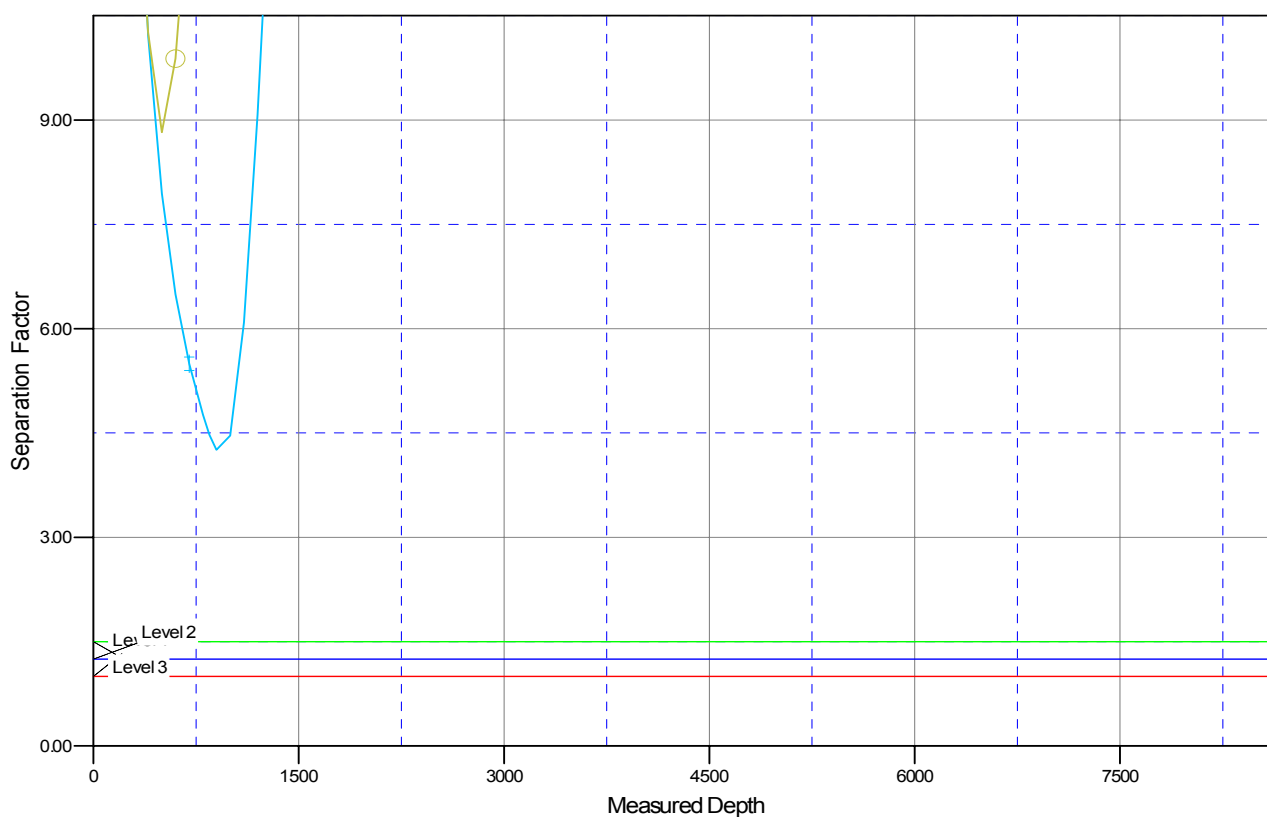


Company:	ANADARKO PETROLEUM CORP.	Local Co-ordinate Reference:	Well REIGLE 22-4
Project:	ANADARKO COLORADO NORTHERN ZONE NAD 83	TVD Reference:	plat GL @ 4860.0ft
Reference Site:	WELD_Reigle	MD Reference:	plat GL @ 4860.0ft
Site Error:	0.0ft	North Reference:	True
Reference Well:	REIGLE 22-4	Survey Calculation Method:	Minimum Curvature
Well Error:	0.0ft	Output errors are at	2.00 sigma
Reference Wellbore	REIGLE 22-4	Database:	EDM 2003.21 Single User Db
Reference Design:	REIGLE 22-4 (wp01)	Offset TVD Reference:	Offset Datum

Reference Depths are relative to plat GL @ 4860.0ft
Offset Depths are relative to Offset Datum
Central Meridian is 105° 30' 0.000 W °

Coordinates are relative to: REIGLE 22-4
Coordinate System is US State Plane 1983, Colorado Northern Zone
Grid Convergence at Surface is: 0.54°

Separation Factor Plot



LEGEND

AS UNIT #2 V0	MOSEK #7-4, MOSEK #7-4, MOSEK #7-4 V0	REIGLE 24-4, REIGLE 24-4 (wp01) V0
ET AL UN #1 (wp01) V0	REIGLE 17-4, REIGLE 17-4, REIGLE 17-4 (wp01) V0	REIGLE 25-4, REIGLE 25-4 (wp01) V0
	REIGLE 18-4, REIGLE 18-4, REIGLE 18-4 (wp01) V0	REIGLE 31-4, REIGLE 31-4 (wp01) V0
	REIGLE 21-4, REIGLE 21-4, REIGLE 21-4 (wp01) V0	REIGLE 32-4, REIGLE 32-4 (wp01) V0