



Segmented Bond Log Gamma Ray

Baker Atlas

File No:	Company	GUNNISON ENERGY CORP.	
	Well	OAK MESA HUGHES 1393 #12-22	
API No:	Field	WILDCAT	
05029061080000	County	DELTA	State
		COLORADO	
Location		Other Services	
SHL: 2513' FWL & 2078' FNL		NONE	
SEC 12 TWP 13S RGE 9SW			
Permanent Datum	GL	Elevation	Elevations
Log Measured From	KB	19 ft	KB 9124 ft
Drill Measured From	KELLY BUSHING		DF 9123 ft
			GL 9105 ft

Date	09/AUG/10	09/AUG/10
Run	TWO	TWO
Service Order	574499	574499
Depth Driller	3389 ft	3389 ft
Depth Logger	2500 ft	2550 ft
Bottom Logged Interval	2500 ft	2550 ft
Top Logged Interval	800 ft	800 ft
Time Started	7:00	11:30
Time Finished	11:30	14:00
Operator Rig Time	4.5 hrs	2.5 hrs
Type of Fluid in Hole	WATER	WATER
Fluid Density	8 lbm/gal	8 lbm/gal
Salinity	N/A	N/A
Fluid Level	FULL	FULL
Logged Cement Top	N/A	N/A
Wellhead Pressure	0 psi	1000 psi
Maximum Hole Deviation	N/A	N/A
Nominal Logging Speed	30 fpm	30 fpm
Maximum Recorded Temperature	N/A	N/A
Reference Log	BAKER ATLAS SBT LOG	BAKER ATLAS SBT LOG
Reference Log Date	06/AUG/10	06/AUG/10
Equipment No.	4214	4214
Location	GRAND JUNCTION	GRAND JUNCTION
Recorded By	J. WIESER	J. WIESER
Witnessed By	BUCKLES	BUCKLES

- FOLD HERE

In making interpretations of logs, our employees will give the customer the benefit of their best judgement. But since all interpretations are opinions based on inferences from electrical or other measurements, we cannot, and we do not guarantee the accuracy or correctness of any interpretation. We shall not be liable or responsible for any loss, cost, damages, or expenses whatsoever incurred or sustained by the customer resulting from any interpretation made by any of our employees.

Borehole Record		
Bit Size	From	To
N/A	N/A	N/A
12.25 In	808 ft	3389 ft

Casing Record				
Size	Weight	Grade	From	To
13.375 In	54.5 lbm/ft	N/A	0 ft	808 ft
9.625 In	40 lbm/ft	N80	0 ft	3389 ft

Cement Data								
Job Type	From	To	Time	Date	Cement Type	Density	Volume	Additives
INTERMEDIATE	0 ft	3264 ft	1:30	04/AUG/10	CLASS G	12.3 lbm/gal	262 BBL	CLASS G

Remarks
RUN 2, TRIP 1: THIRD LOG OF WELL.
NO PRESSURE ON THIS RUN.
RUN 2, TRIP 2: FOURTH LOG OF WELL.

Equipment Data					
Run	Trip	Tool	Series Number	Serial Number	Position
2	1	OCL			CENTRALIZED
2	1	GR	1339XA	2761	CENTRALIZED
2	1	TELEMETRY	1633EA	185604	CENTRALIZED
2	1	CENTRALIZER	4341EA	119379	CENTRALIZED
2	1	SBT	1424XA	153573	PAD DEVICE
2	1	VDL	1424PA	10061280	CENTRALIZED
2	1	CENTRALIZER	4341XA	10354702	CENTRALIZED

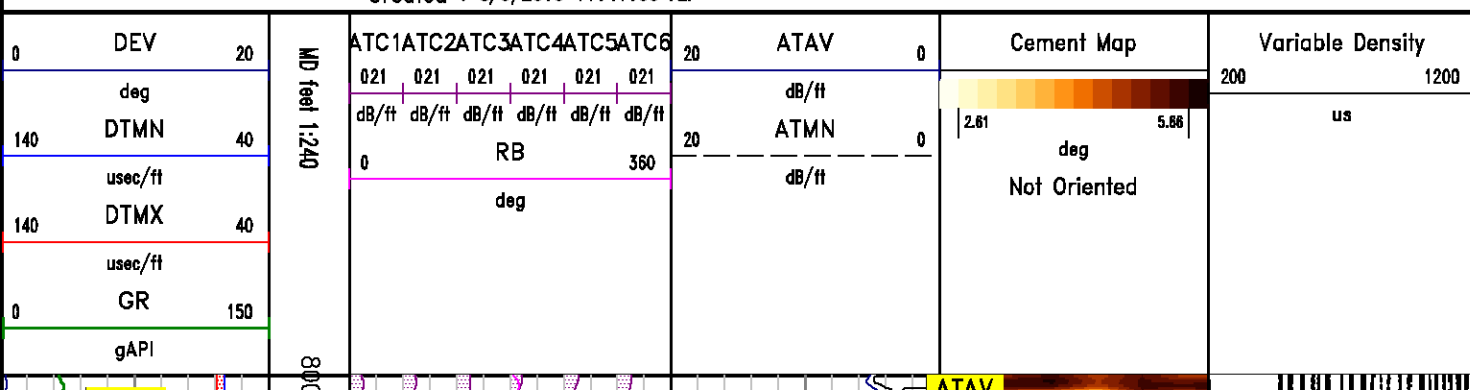
MAIN SECTION
1000 psi

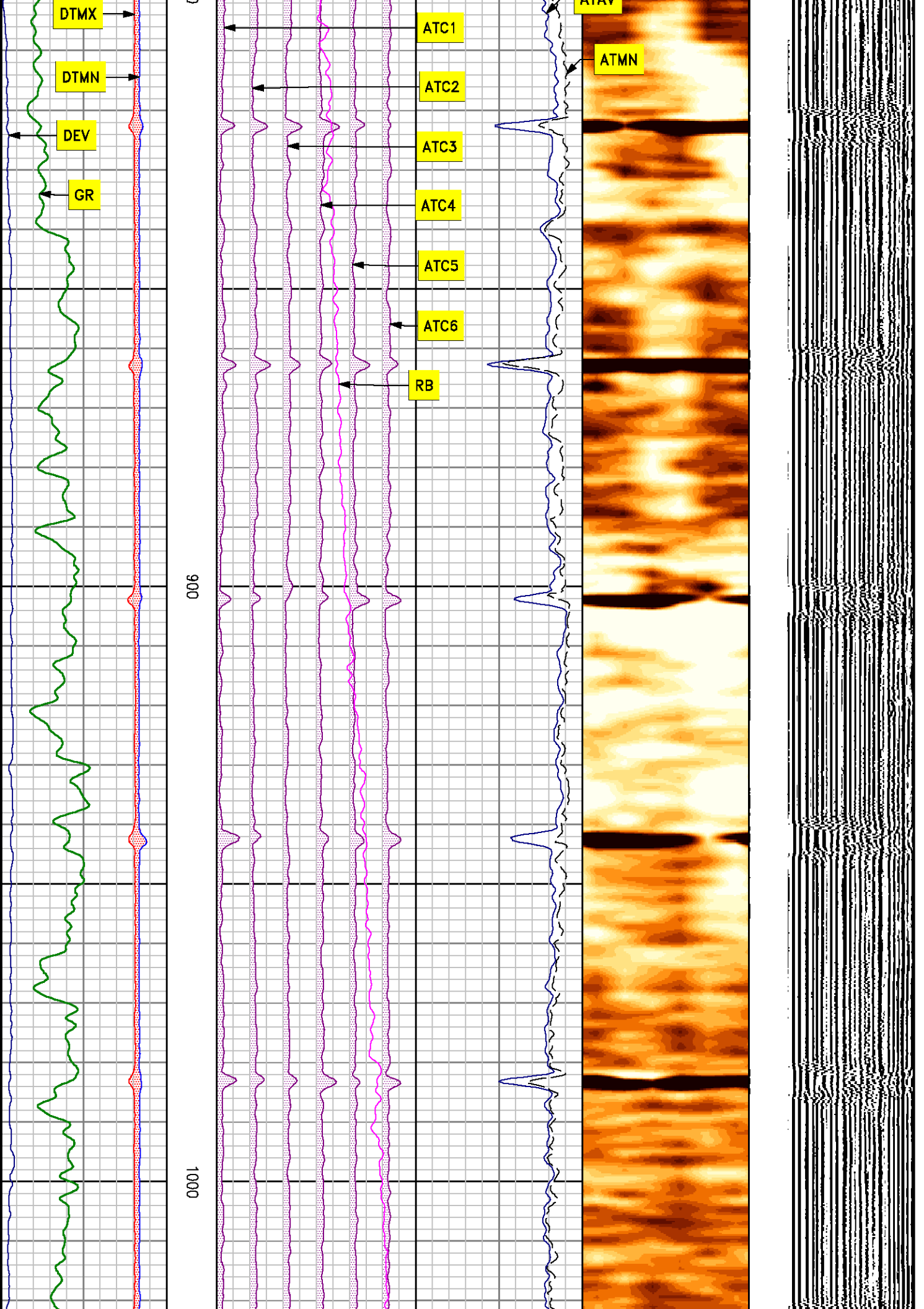
SBT NORMALIZATION RESULTS						
CURVE	PARAMETER	VALUE	UNITS	TOP	BOTTOM	COMMENT
ATC1	seg1 cnormf1	-0.289	db/ft	199.925	2553.000	
ATC2	seg2 cnormf2	-0.207	db/ft	199.925	2553.000	
ATC3	seg3 cnormf3	-0.012	db/ft	199.925	2553.000	
ATC4	seg4 cnormf4	0.617	db/ft	199.925	2553.000	
ATC5	seg5 cnormf5	0.261	db/ft	199.925	2553.000	
ATC6	seg6 cnormf6	-0.371	db/ft	199.925	2553.000	
ATC1	seg1 dnormf1	-0.388	db/ft	199.925	2553.000	Good Confidence
ATC2	seg2 dnormf2	-0.145	db/ft	199.925	2553.000	Good Confidence
ATC3	seg3 dnormf3	-0.028	db/ft	199.925	2553.000	Good Confidence
ATC4	seg4 dnormf4	0.450	db/ft	199.925	2553.000	Good Confidence
ATC5	seg5 dnormf5	0.365	db/ft	199.925	2553.000	Good Confidence
ATC6	seg6 dnormf6	-0.253	db/ft	199.925	2553.000	Good Confidence

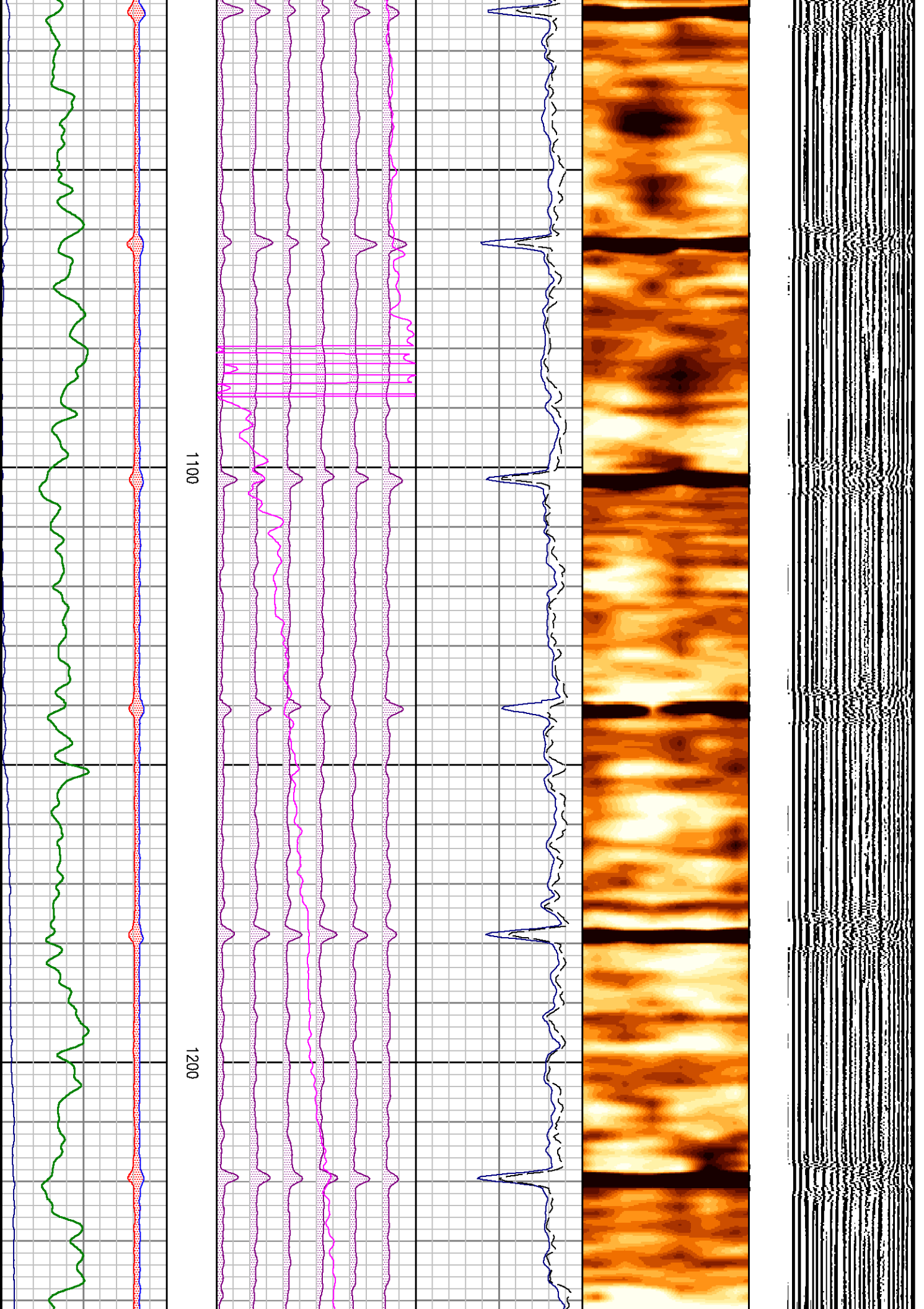
MEASUREMENT TYPE	PARAMETER	VALUE	UNITS	TOP	BOTTOM
amp	fpamp	57.415	mv	188.925	2553.000
amp	fpattn	1.589	dB/ft	188.925	2553.000
atc	dbspread	4.241	dB/ft	188.925	2553.000
atc	spacing	0.707	feet	188.925	2553.000
cemr	casing od	9.625	inches	188.925	2553.000
cemr	casing wt	40.000	lbm/ft	188.925	2553.000
cemr	compress	500.000	psi	188.925	2553.000
CN	Bit Size	7.875	inches	199.925	2553.000
CN	Casing Thickness	0.400	inches	188.925	2553.000
CN	Casing/Cement Correction	No		199.925	2553.000
CN	CN Chism	No		199.925	2553.000
CN	Matrix	Limestone		199.925	2553.000
CN	Salinity	0.000	ppm	199.925	2553.000

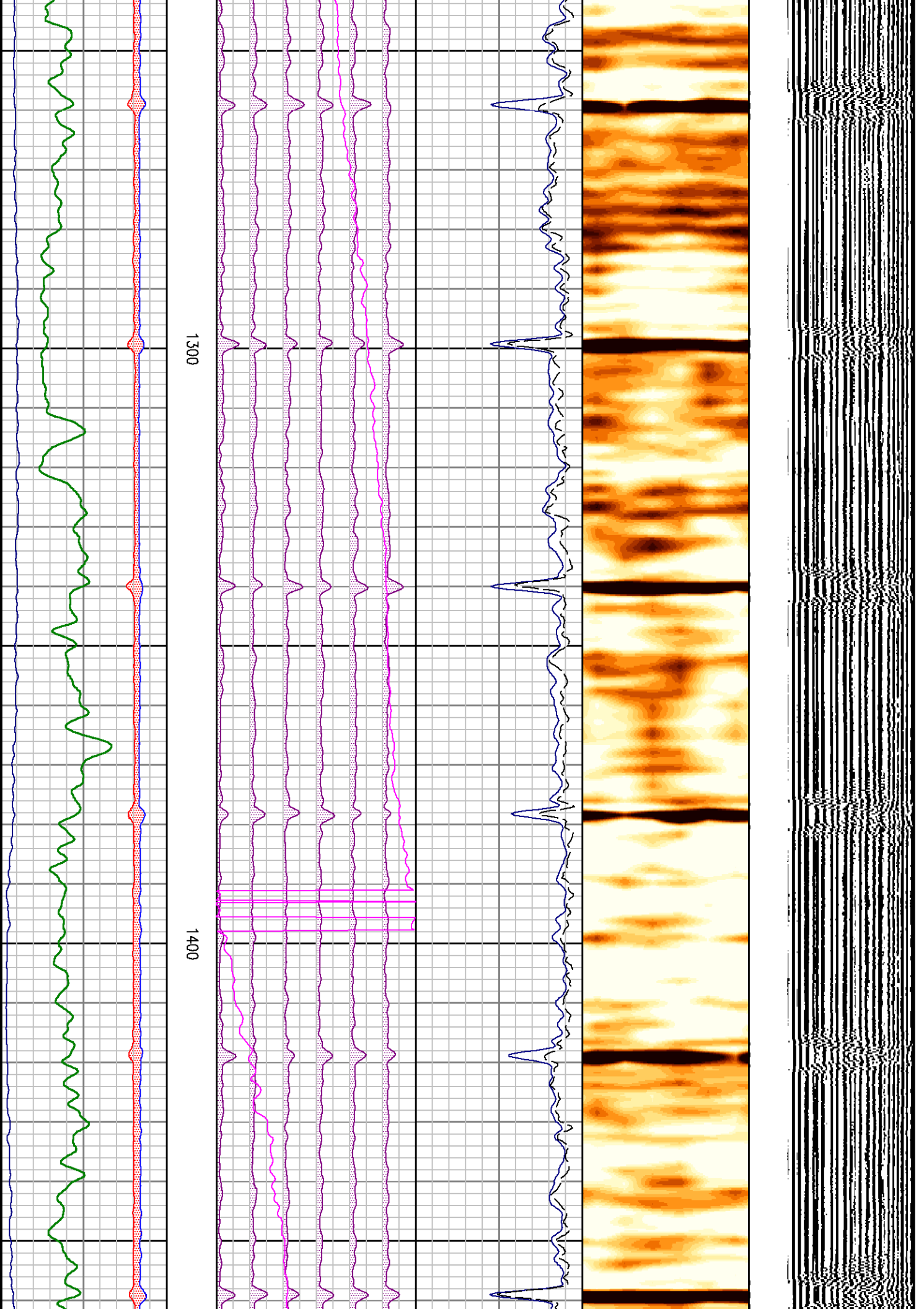
SERIES	DEPTH OFFSET	ACQUIRED CURVES						
2346XA	-46.500	CCL						
1309XA	-36.750	GR						
2435XA	-30.250	LSN						
2435XA	-29.750	NEU	SSN					
1424XA	-11.000	ATC1	ATC2	ATC3	ATC4	ATC5	ATC6	
		ATAV	ATMN	ATMX	AMAV	DEV	DTMN	
		DTMX	RB	XATT	YATT			
1424PA	0.000	CHV	CYQ	SIG				

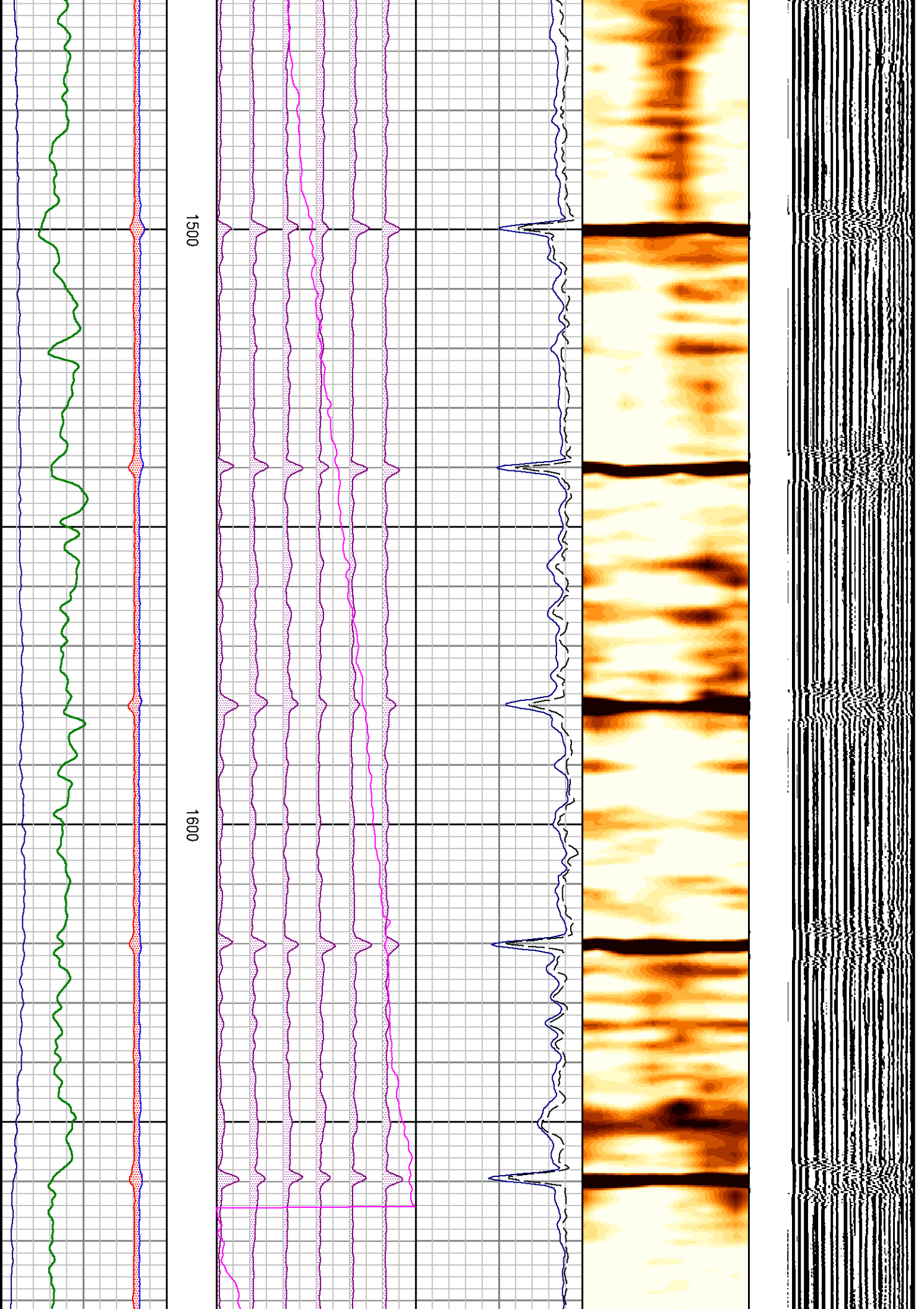
Created : 8/9/2010 11:41:05 AM

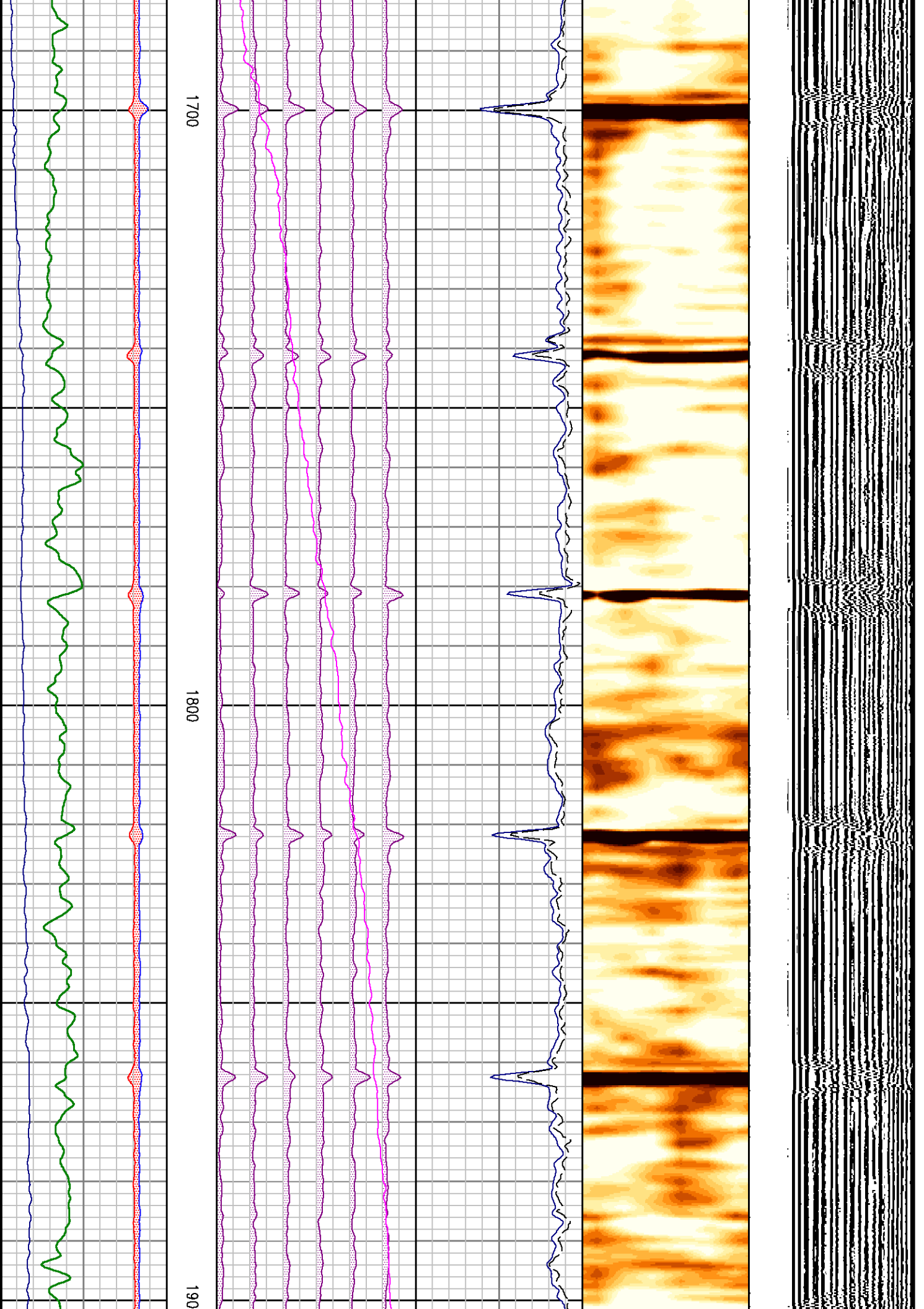


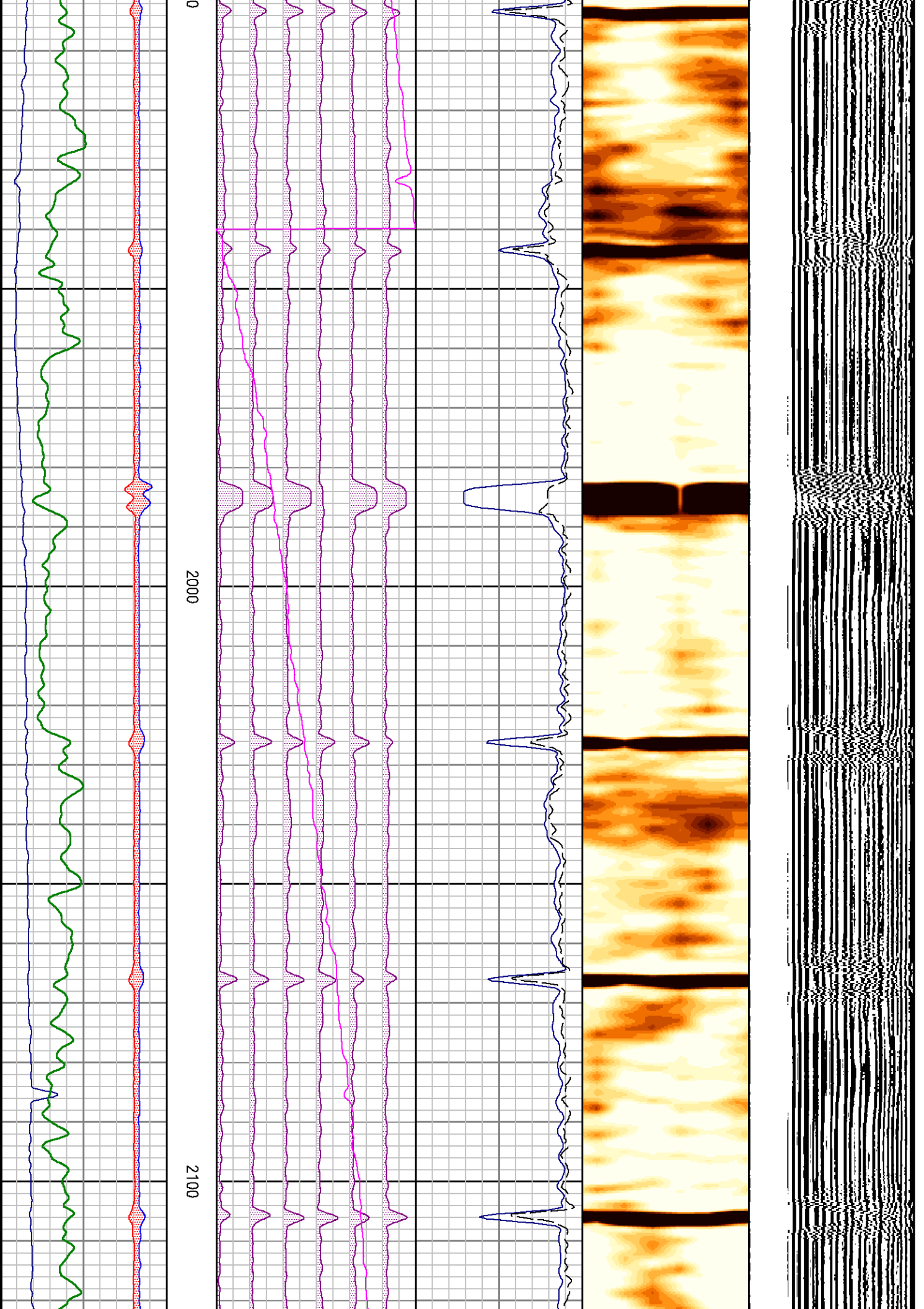


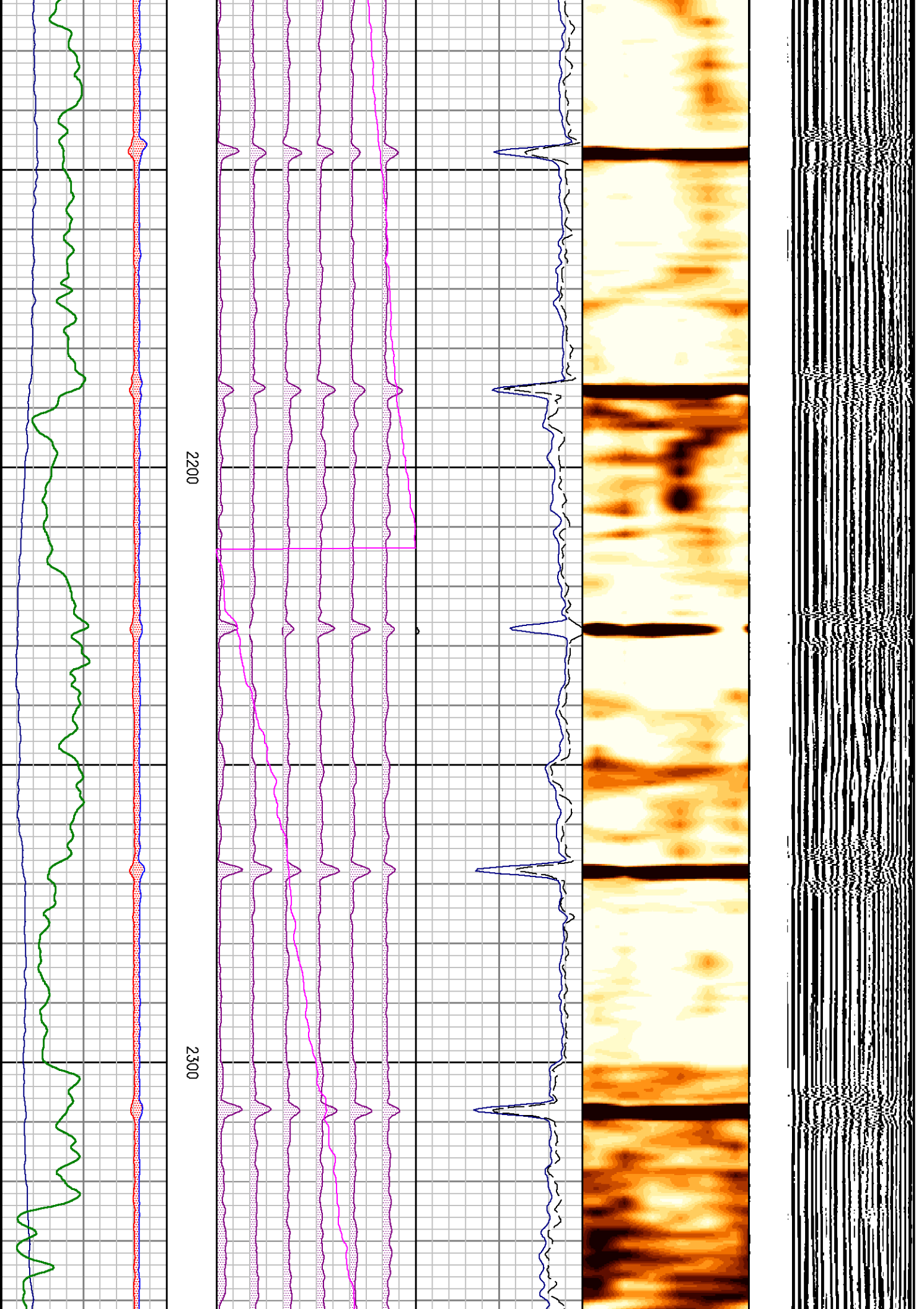


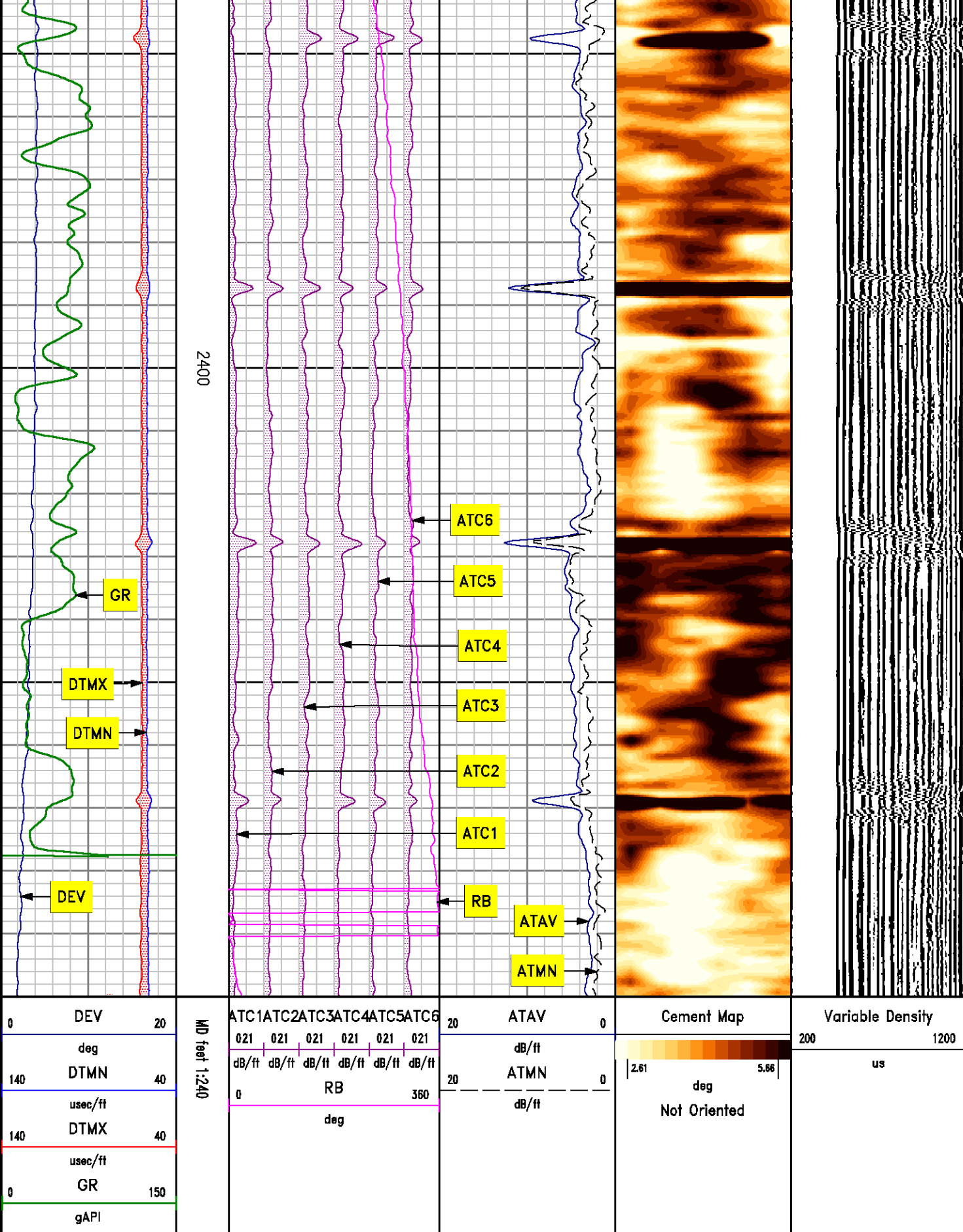












MAIN SECTION

0 psi

SBT NORMALIZATION RESULTS

CURVE	PARAMETER	VALUE	UNITS	TOP	BOTTOM	COMMENT
ATC1	seg1 cnormf1	-0.289	db/ft	151.300	2500.996	
ATC2	seg2 cnormf2	-0.207	db/ft	151.300	2500.996	
ATC3	seg3 cnormf3	-0.012	db/ft	151.300	2500.996	
ATC4	seg4 cnormf4	0.617	db/ft	151.300	2500.996	
ATC5	seg5 cnormf5	0.261	db/ft	151.300	2500.996	
ATC6	seg6 cnormf6	-0.371	db/ft	151.300	2500.996	
ATC1	seg1 dnormf1	-0.403	db/ft	151.300	2500.996	Good Confidence
ATC2	seg2 dnormf2	-0.146	db/ft	151.300	2500.996	Good Confidence
ATC3	seg3 dnormf3	-0.030	db/ft	151.300	2500.996	Good Confidence
ATC4	seg4 dnormf4	0.590	db/ft	151.300	2500.996	Good Confidence
ATC5	seg5 dnormf5	0.219	db/ft	151.300	2500.996	Good Confidence
ATC6	seg6 dnormf6	-0.231	db/ft	151.300	2500.996	Good Confidence

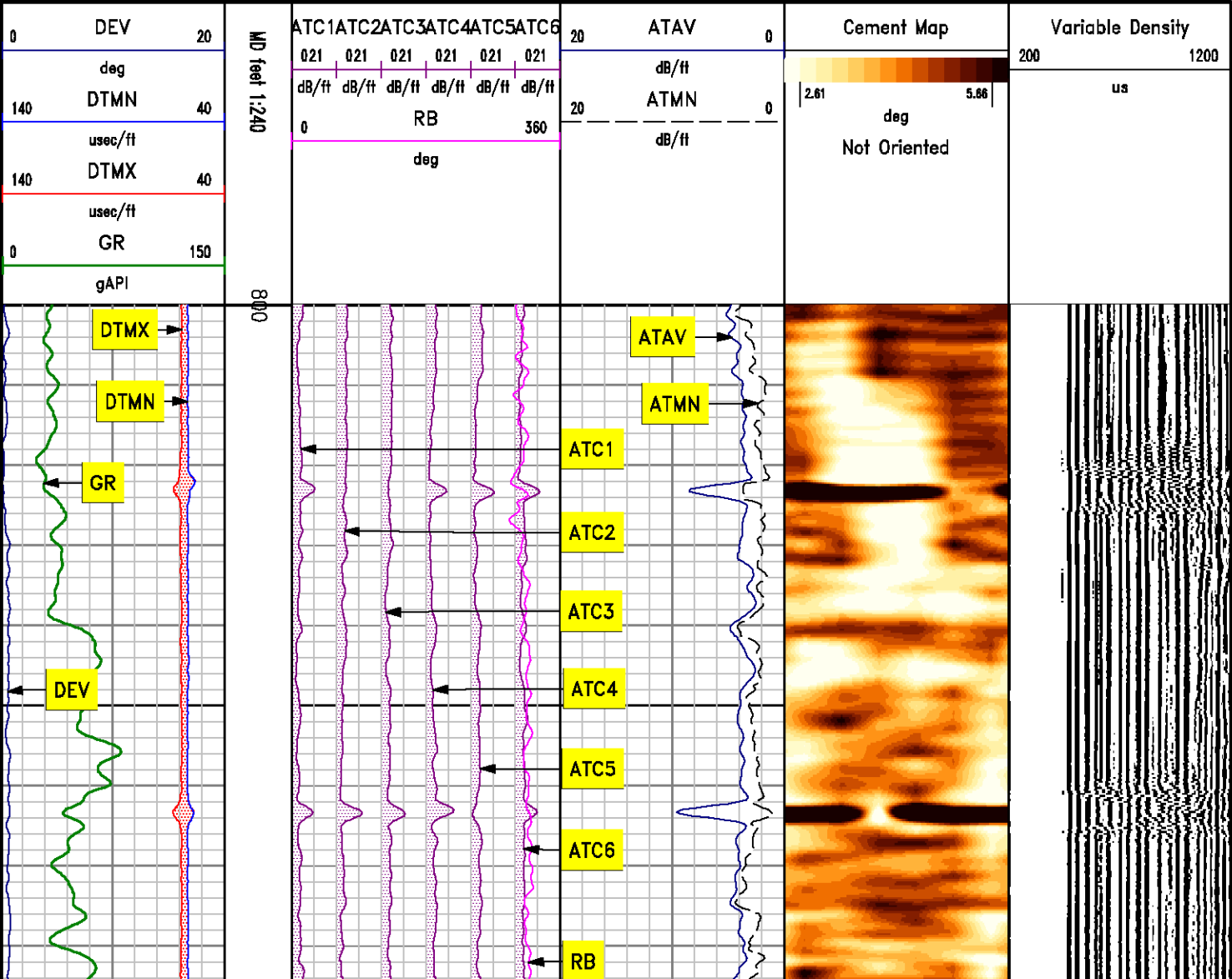
SBT PROCESSING

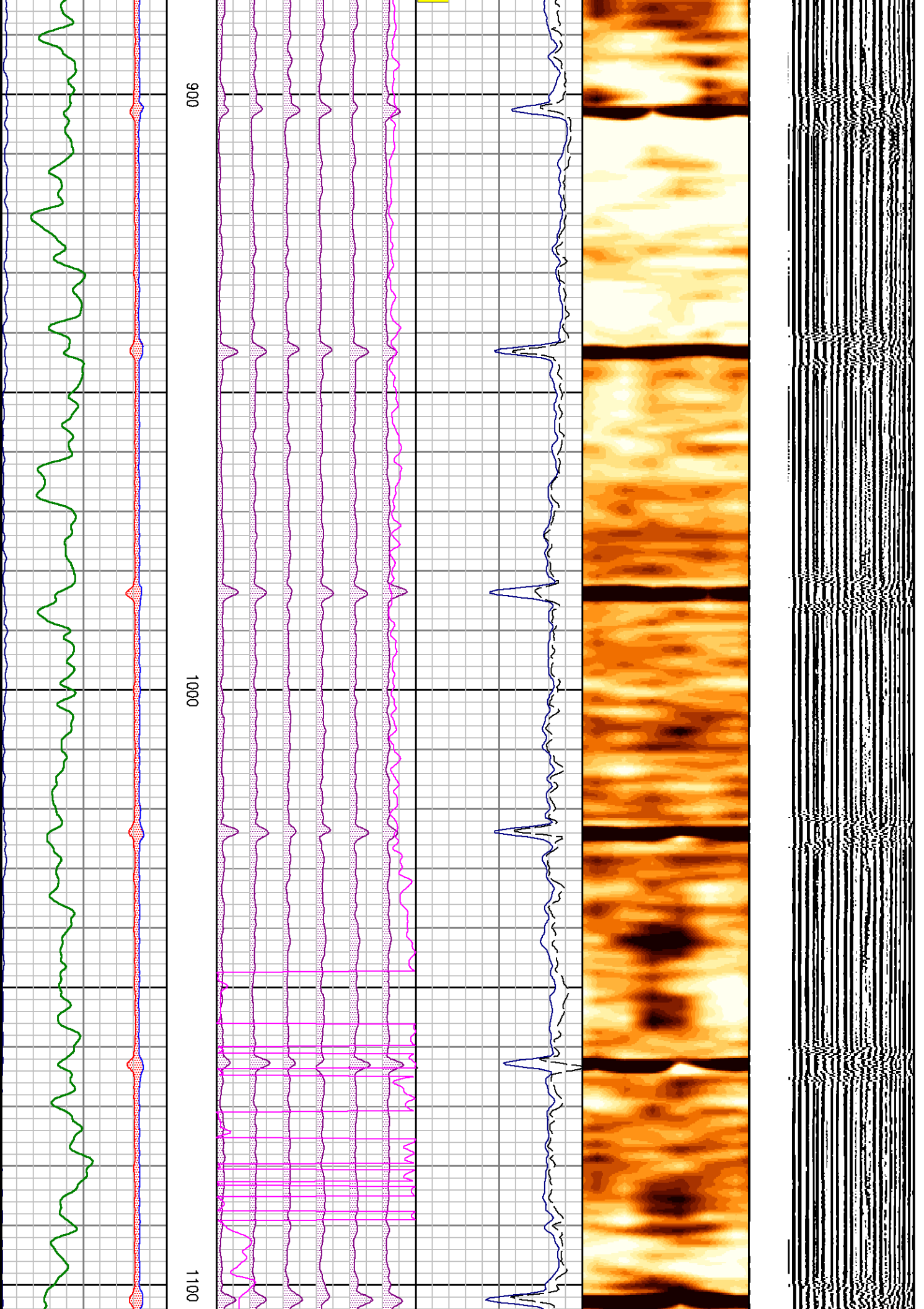
MEASUREMENT TYPE	PARAMETER	VALUE	UNITS	TOP	BOTTOM
amp	fpamp	57.415	mv	143.300	2500.996
amp	fpattn	1.589	dB/ft	143.300	2500.996
atc	dbspread	4.241	dB/ft	143.300	2500.996
atc	spacing	0.707	feet	143.300	2500.996
cemr	casing od	9.625	inches	143.300	2500.996
cemr	casing wt	40.000	lbm/ft	143.300	2500.996
cemr	compress	500.000	psi	143.300	2500.996
CN	Bit Size	7.875	inches	151.300	2500.996
CN	Casing Thickness	0.400	inches	143.300	2500.996
CN	Casing/Cement Correction	No		151.300	2500.996
CN	CN Chism	No		151.300	2500.996
CN	Matrix	Limestone		151.300	2500.996
CN	Salinity	0.000	ppm	151.300	2500.996

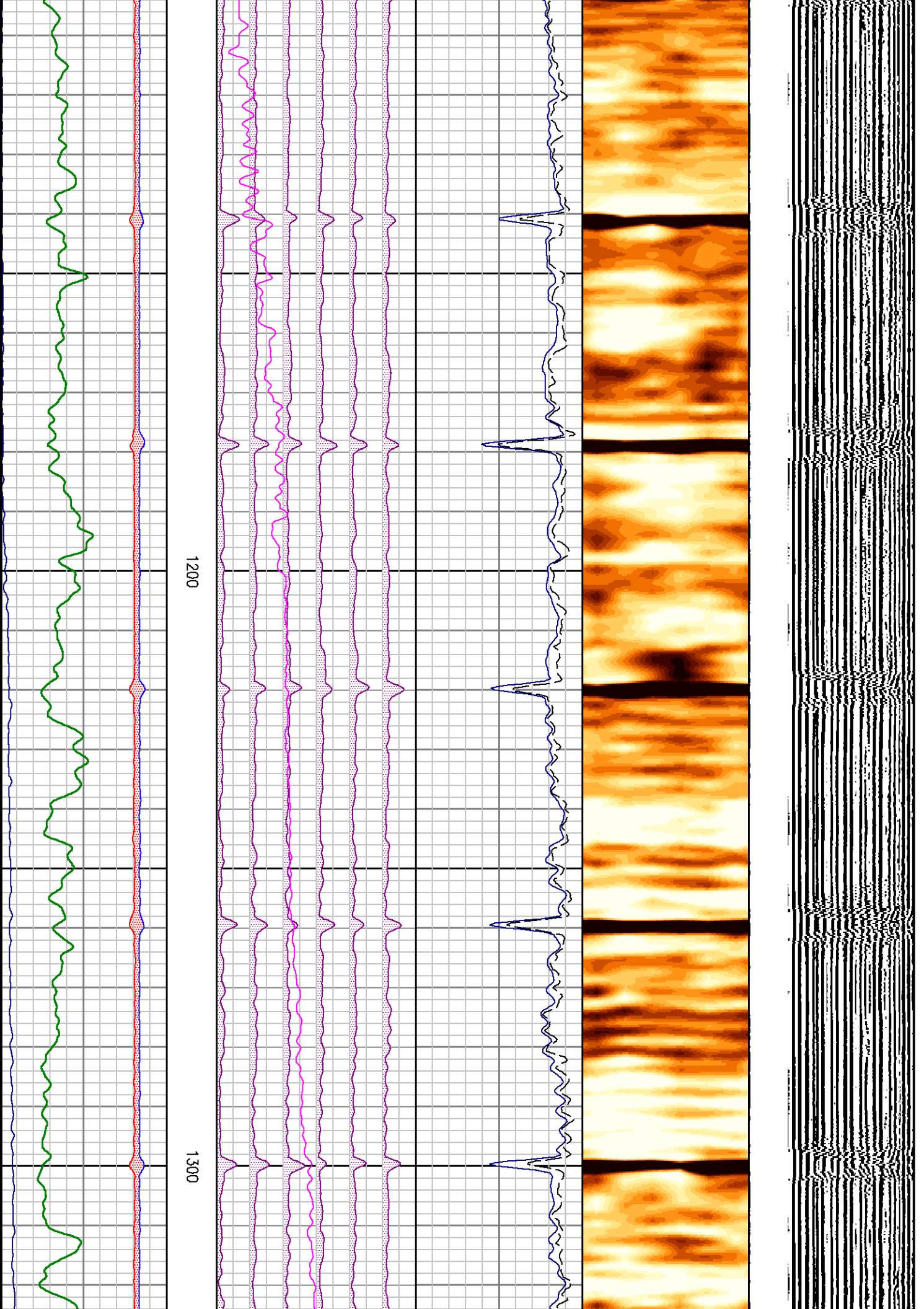
DEPTH OFFSETS
(for Acquired Curves)

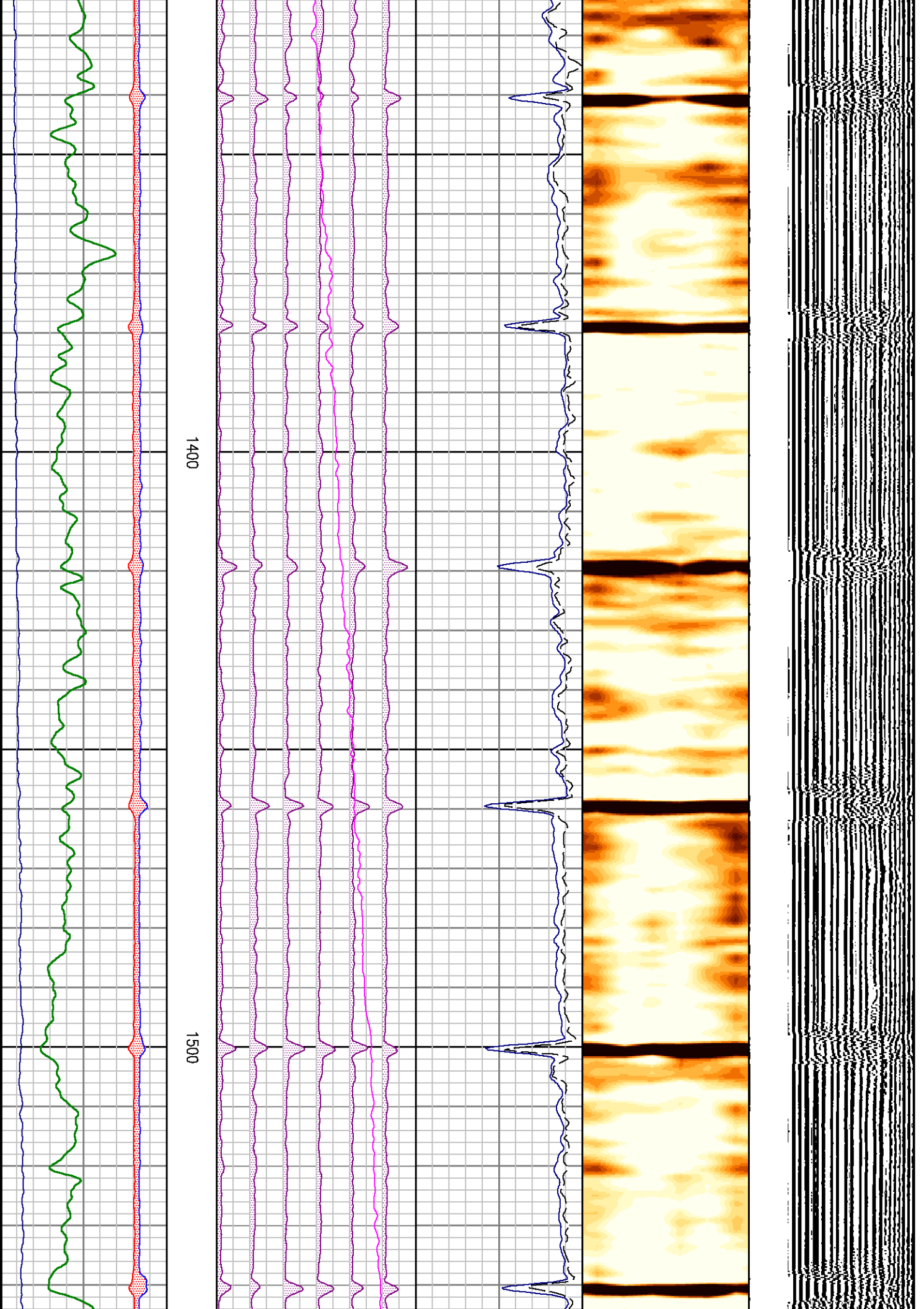
SERIES	DEPTH OFFSET	ACQUIRED CURVES					
2346XA	-46.500	CCL					
1309XA	-36.750	GR					
2435XA	-30.250	LSN					
2435XA	-29.750	NEU	SSN				
1424XA	-11.000	ATC1	ATC2	ATC3	ATC4	ATC5	ATC6
		ATAV	ATMN	ATMX	AMAV	DEV	DTMN
		DTMX	RB	XATT	YATT		
1424PA	0.000	CHV	CYQ	SIG			

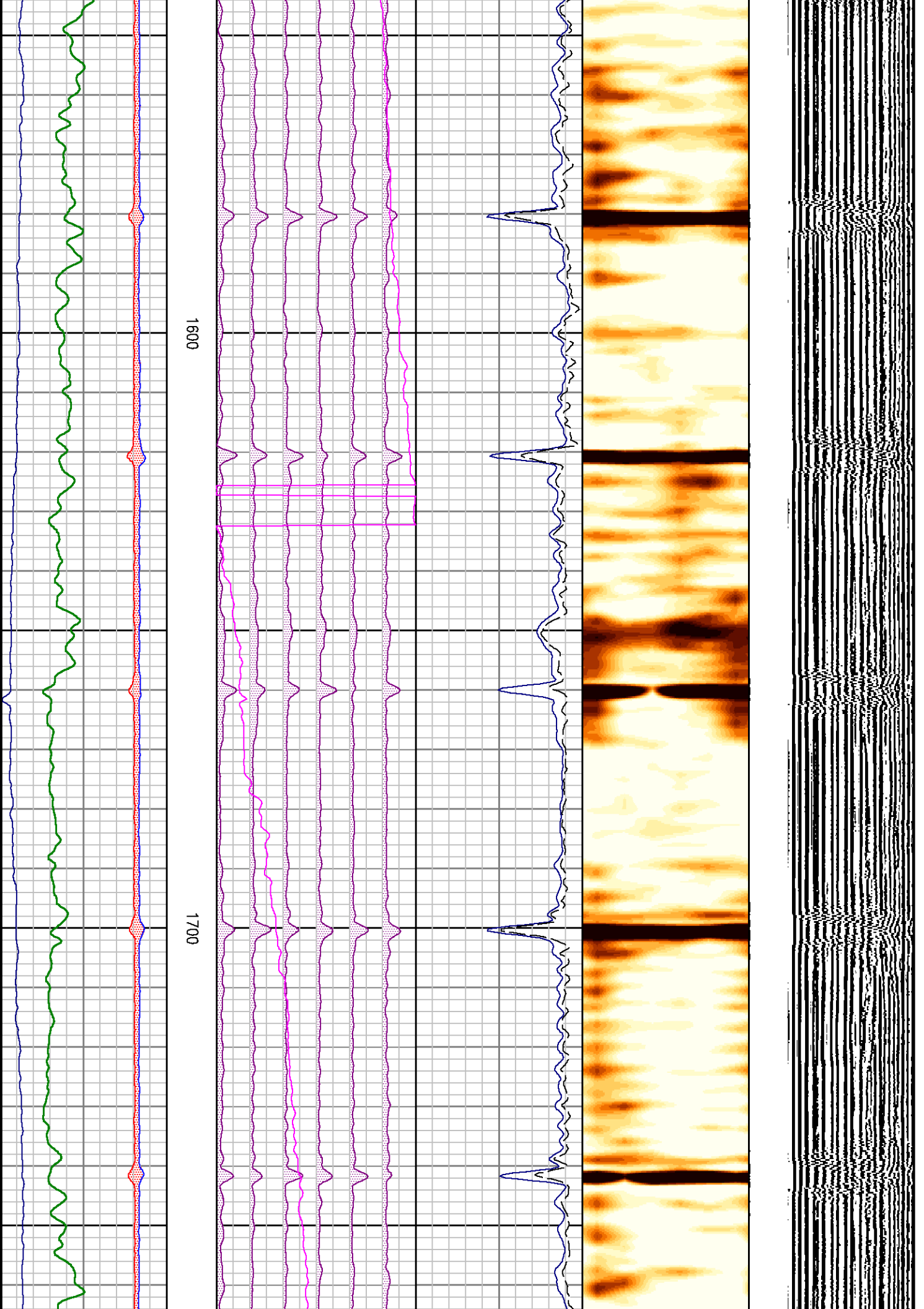
Created by : SBT, v5.0.003
Plotted by : PlotMgr, v5.4.504
Company : GUNNISON ENERGY CORP.
Well : OAK MESA HUGHES 1393 #12-22
File Name : d:\welldata\sbt22\main_0psi.xtf
Mode : PlotMgr 5.4.504
Interval : 800.00 - 2500.00 feet UP
Created : 8/9/2010 12:17:35 PM

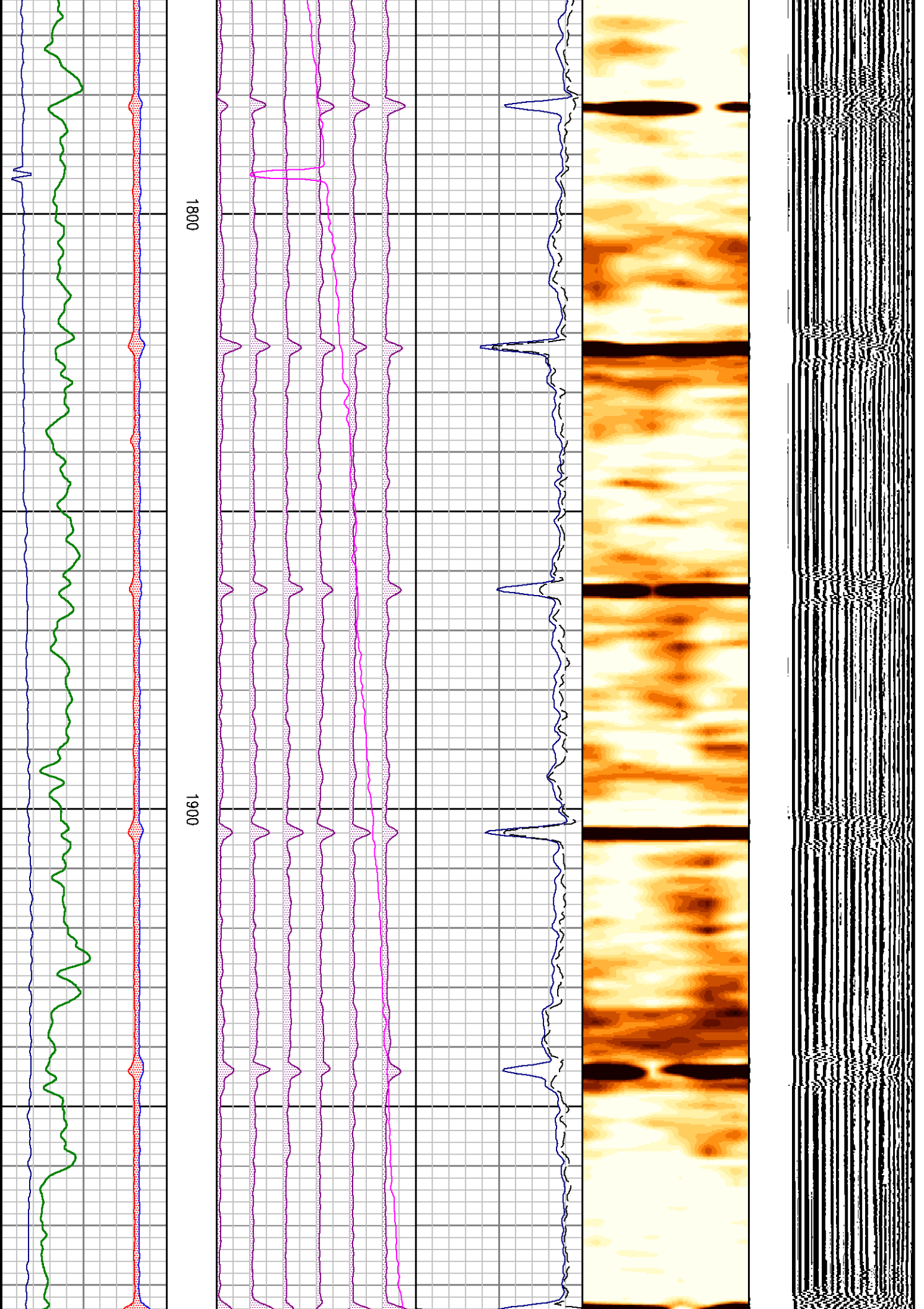


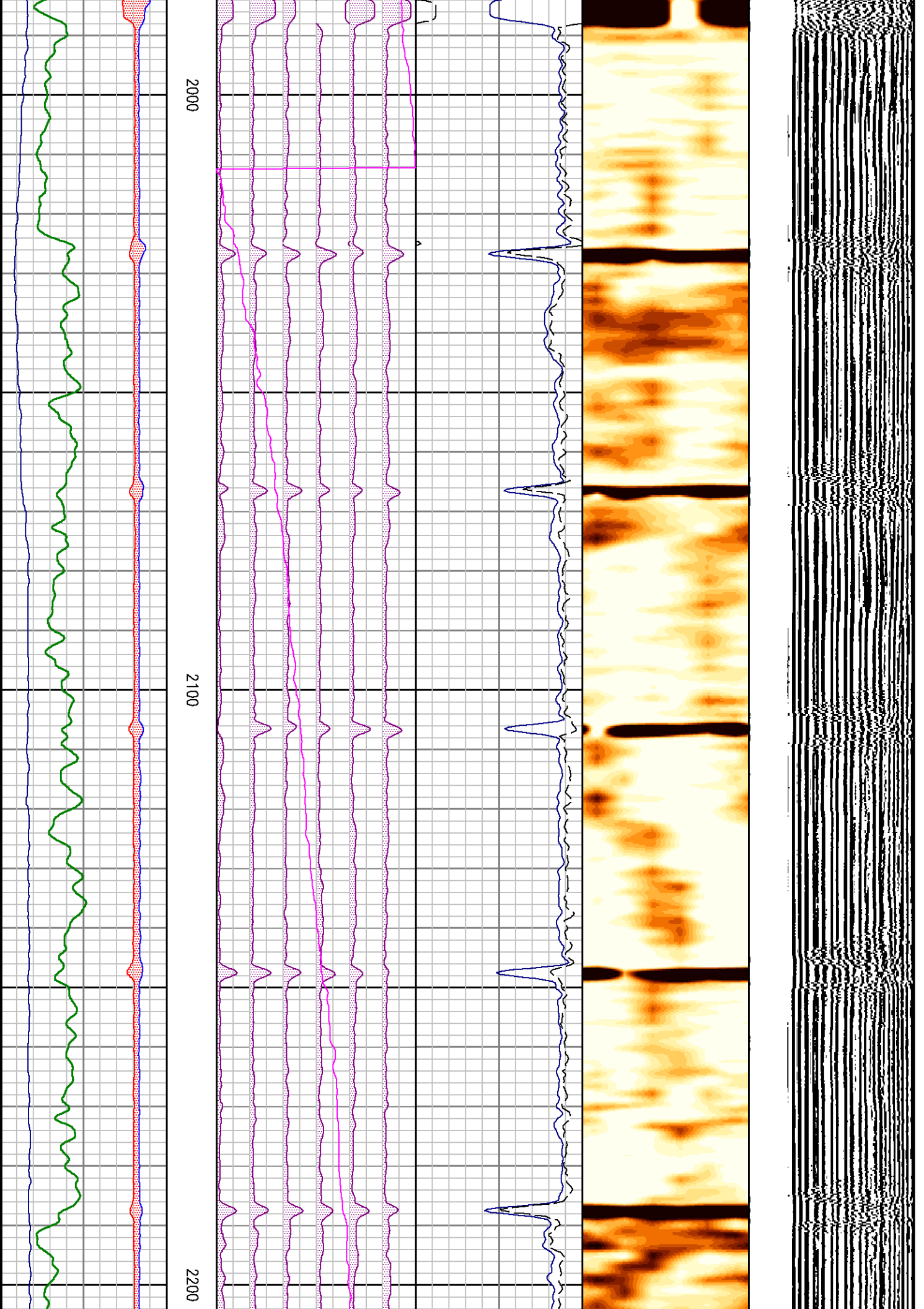


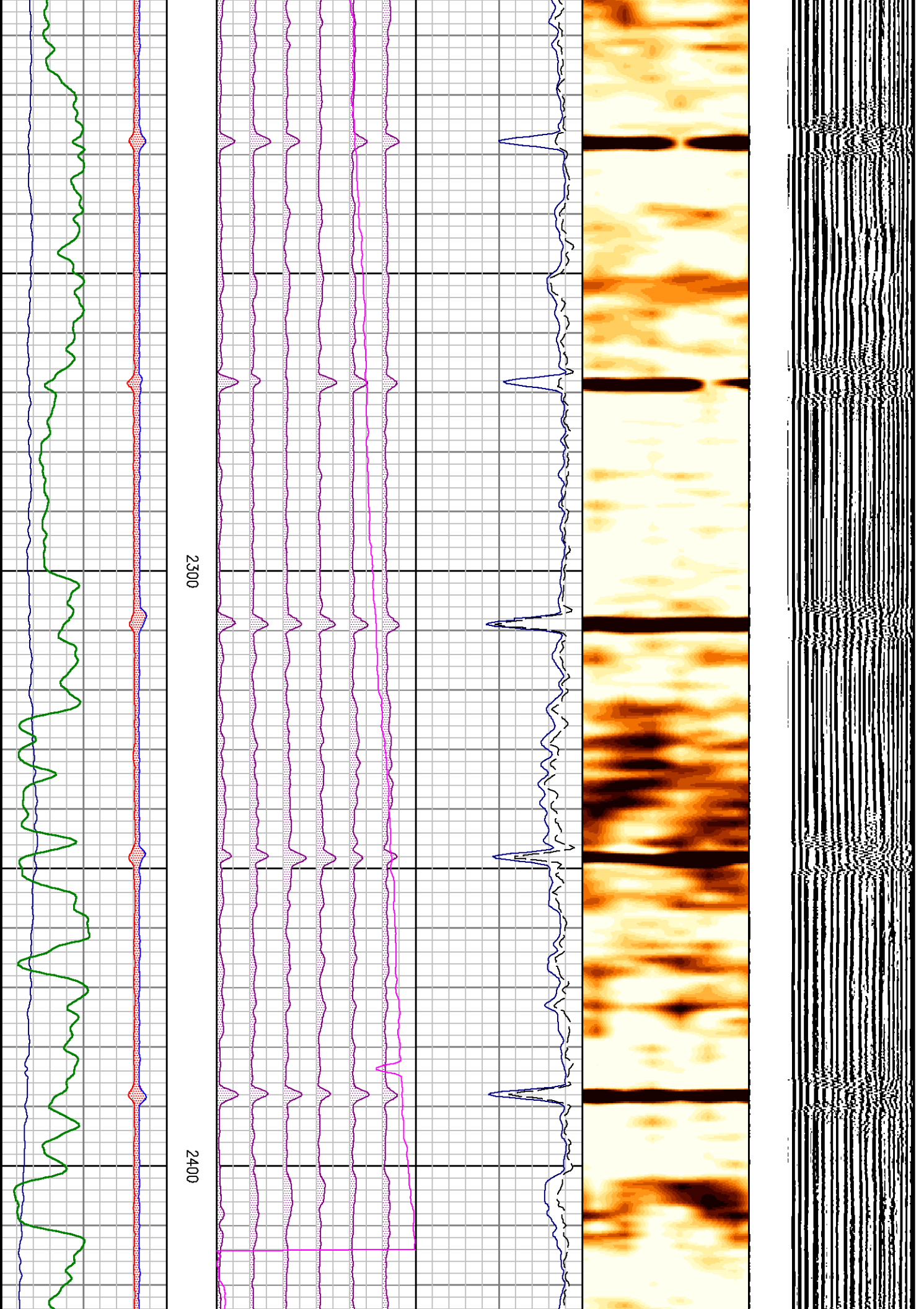


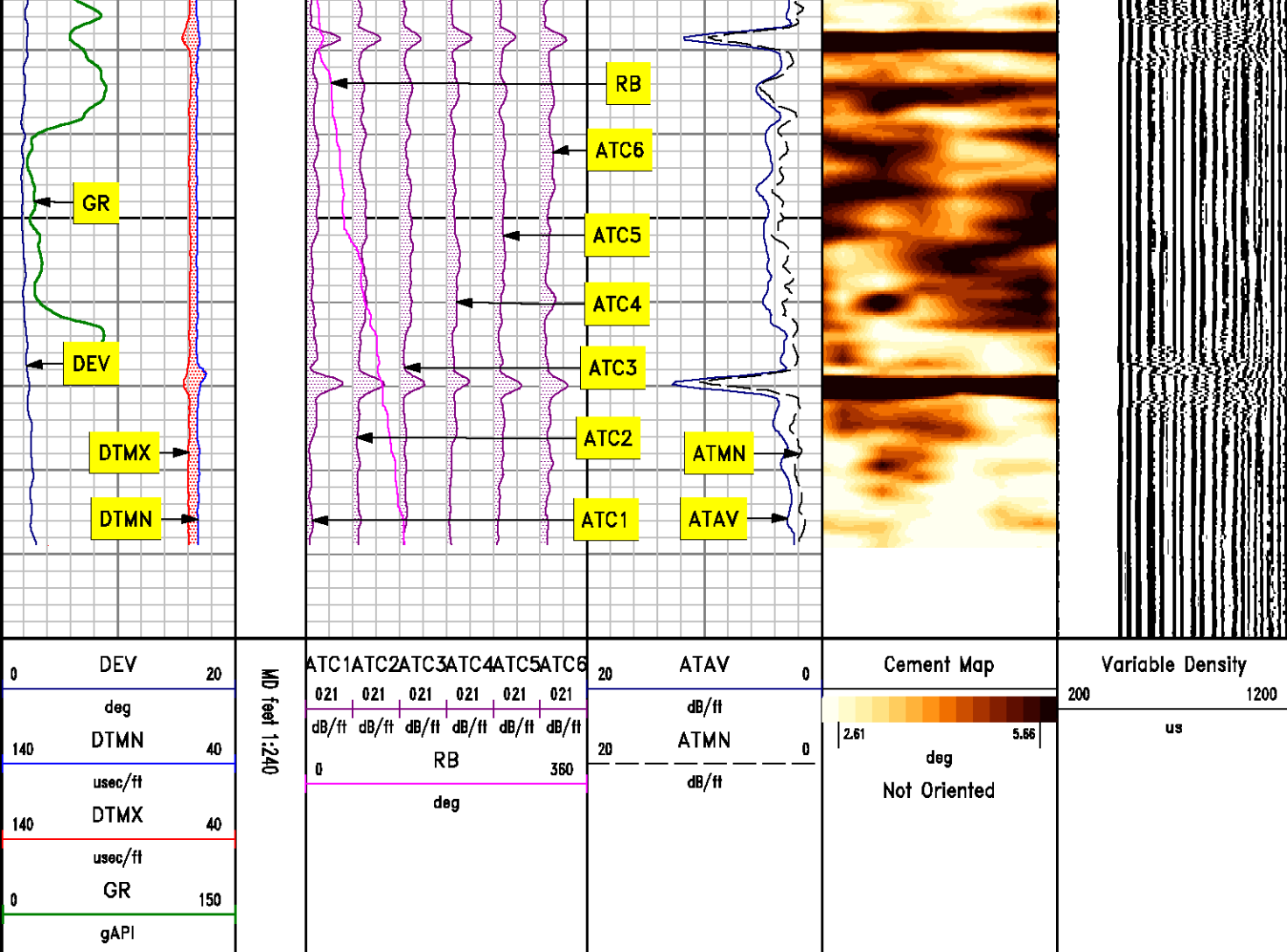












REPEAT SECTION
0 psi

SBT NORMALIZATION RESULTS

CURVE	PARAMETER	VALUE	UNITS	TOP	BOTTOM	COMMENT
ATC1	seg1 cnormf1	-0.392	db/ft	2099.750	2511.844	
ATC2	seg2 cnormf2	-0.153	db/ft	2099.750	2511.844	
ATC3	seg3 cnormf3	0.227	db/ft	2099.750	2511.844	
ATC4	seg4 cnormf4	0.309	db/ft	2099.750	2511.844	
ATC5	seg5 cnormf5	0.241	db/ft	2099.750	2511.844	
ATC6	seg6 cnormf6	-0.232	db/ft	2099.750	2511.844	

ATC1	seg1 dnormf1	-0.289	db/ft	2099.750	2511.844	Good Confidence
ATC2	seg2 dnormf2	-0.207	db/ft	2099.750	2511.844	Good Confidence
ATC3	seg3 dnormf3	-0.012	db/ft	2099.750	2511.844	Good Confidence
ATC4	seg4 dnormf4	0.617	db/ft	2099.750	2511.844	Good Confidence
ATC5	seg5 dnormf5	0.261	db/ft	2099.750	2511.844	Good Confidence
ATC6	seg6 dnormf6	-0.371	db/ft	2099.750	2511.844	Good Confidence

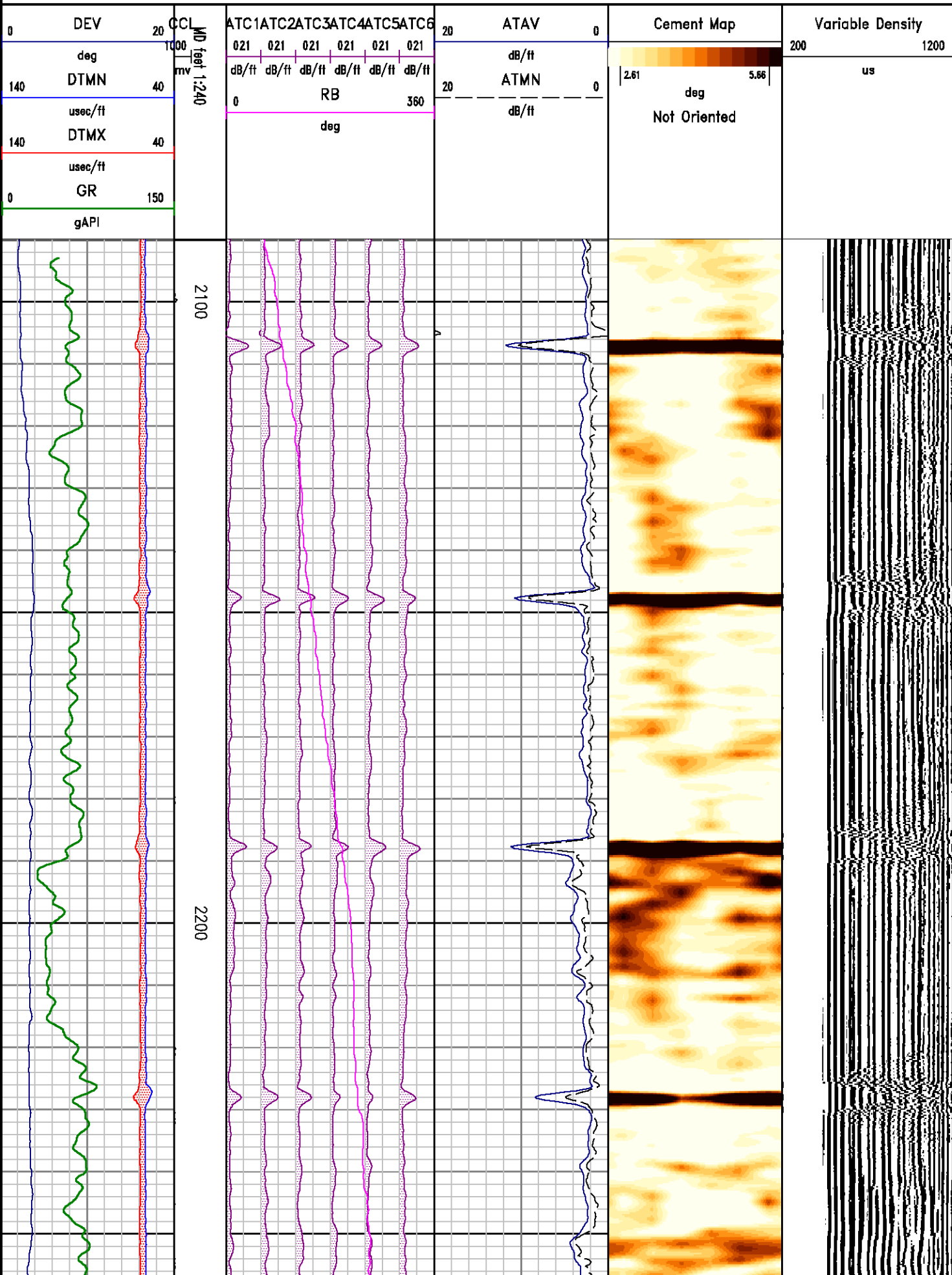
SBT PROCESSING

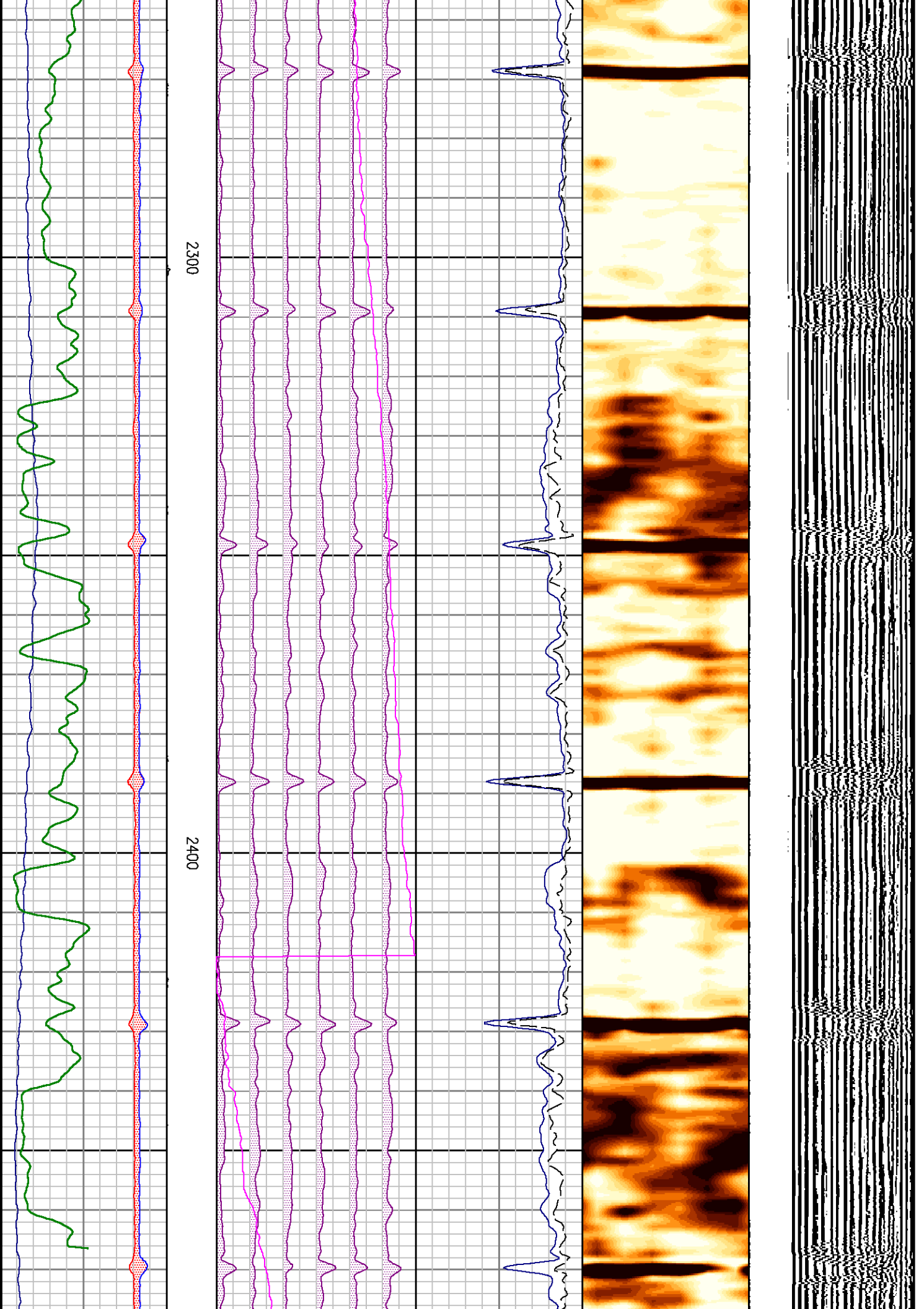
MEASUREMENT TYPE	PARAMETER	VALUE	UNITS	TOP	BOTTOM
amp	fpamp	57.415	mv	2088.750	2512.000
amp	fpattn	1.589	dB/ft	2088.750	2512.000
atc	dbspread	4.241	dB/ft	2088.750	2512.000
atc	spacing	0.707	feet	2088.750	2512.000
cemr	casing od	9.625	inches	2088.750	2512.000
cemr	casing wt	40.000	lbm/ft	2088.750	2512.000
cemr	compress	500.000	psi	2088.750	2512.000
CN	Bit Size	7.875	inches	2099.750	2511.844
CN	Casing Thickness	0.400	inches	2088.750	2512.000
CN	Casing/Cement Correction	No		2099.750	2511.844
CN	CN Chism	No		2099.750	2511.844
CN	Matrix	Limestone		2099.750	2511.844
CN	Salinity	0.000	ppm	2099.750	2511.844

DEPTH OFFSETS

(for Acquired Curves)

SERIES	DEPTH OFFSET	ACQUIRED CURVES					
2346XA	-46.500	CCL					
1309XA	-36.750	GR					
2435XA	-30.250	LSN					
2435XA	-29.750	NEU	SSN				
1424XA	-11.000	ATC1	ATC2	ATC3	ATC4	ATC5	ATC6
		ATAV	ATMN	ATMX	AMAV	DEV	DTMN
		DTMX	RB	XATT	YATT		
1424PA	0.000	CHV	CYQ	SIG			





CALIBRATION SUMMARY

DATE/TIME PERFORMED: Tue Jul 27 09:47:06 2010 TOOL SERIES: 1424XA ASSET: 573 SEQ: JU

	X-Att [raw]	Y-Att [raw]	RB [deg]	X-Max [deg]	Y-Max [deg]	OFFSET [deg]
PAD 2	315.00	-293.80	349.70			
PAD 3	398.80	98.00	60.00	420.55	308.75	-41.49

Verification File: C:\case\calver\RB\573JU.vp

PRIMARY VERIFICATION

DATE/TIME PERFORMED: Tue Jul 27 09:47:57 2010 TOOL SERIES: 1424XA ASSET: 573 SEQ: JU

	Pad 1	Pad 2	Pad 3	Pad 4	Pad 5	Pad 6
RB [deg]	300.67	344.12	60.11	120.41	172.71	239.75

PAD

Verification File: C:\case\calver\PAD\573JU.VK

DATE/TIME PERFORMED: Tue Jul 27 09:49:49 2010 TOOL SERIES: 1424XA ASSET: 573 SEQ: JU

	Pad 1	Pad 2	Pad 3	Pad 4	Pad 5	Pad 6
Noise Level	2.42	1.85	1.63	3.00	1.75	2.65
PAD Sensitivity	407.20	486.00	301.20	465.50	186.90	582.30

TOOL DIAGRAM

OTA LONG CABLE HEAD
Series OTA-L

COLLAR LOCATOR
Series 2334XA
Mnemonic CCL
Diameter 3.25"
Weight 14.00 lb

GAMMA RAY (1309XA)



51.96'
CCL MP 49.83'

GR MP 42.79'

ACOUSTIC DIGITIZER (1633EA)

4 ARM BOW SPRING CENTRALIZER

Series	4341XA
Mnemonic	CENT
Diameter	3.38"
Weight	84.00 lb
Length	4.12'

SEGMENTED BOND TOOL (1424XB)

PAD MP 19.12'

SEGMENTED BOND TOOL VDL SUB (1424PA)

VDL MP 8.12'

4 ARM BOW SPRING CENTRALIZER

Series	4341XA
Mnemonic	CENT
Diameter	3.38"
Weight	84.00 lb
Length	4.12'

0.00'

Total Length: 51.96'
Total Weight: Not Available
Max Diameter: 0' 3.63"



Baker Atlas



Company	GUNNISON ENERGY CORP.			File No:
Well	OAK MESA HUGHES 1393 #12-22			
Field	WILDCAT			API No:
County	DELTA	State	COLORADO	05029061080000
Location			Elevations	
SHL: 2513' FWL & 2078' FNL			KB 9124 ft	
			DF 9123 ft	
			GL 9105 ft	
SEC 12	TWP 13S	RGE 93W		