



# CEMENT BOND LOG

Company ENCANA OIL & GAS (USA) INC.  
 Well HMU 11-9 (P11SW)  
 Field MAMM CREEK  
 County GARFIELD  
 State COLORADO

Company ENCANA OIL & GAS (USA) INC.  
 Well HMU 11-9 (P11SW)  
 Field MAMM CREEK  
 County GARFIELD State COLORADO

Location: API #: 05045101460000  
 SHL: SEISE 0218' FSL & 0568' FEL  
 BHL: NERSW 1980' FSL & 0660' FEL  
 SEC: 11 TWP: 08S RGE: 93W

Permanent Datum GROUND LEVEL Elevation 7706'  
 Log Measured From KELLY BUSHING = 11 FT  
 Drilling Measured From KELLY BUSHING

Other Services: NONE  
 Elevation: K.B. 7717'  
 D.F. 7716'  
 G.L. 7706'

Date	30 AUG 2010		
Run Number	ONE		
Depth Driller	9555'		
Depth Logger	5573'		
Bottom Logged Interval	5573'		
Top Log Interval	3800'		
Open Hole Size	7.875"		
Type Fluid	WATER		
Density / Viscosity	~8.34#		
Max. Recorded Temp.	188 DEG F		
Estimated Cement Top	4064'		
Time Well Ready	N/A		
Time Logger on Bottom	N/A		
Equipment Number	10701/RBT04		
Location	GRAND JUNCTION		
Recorded By	D. SOLIS		
Witnessed By	G. GARDINER		
Borehole Record			
Run Number	Bit	From	To
N/A			N/A
Tubing Record			
	Size	Weight	From
			To
Casing Record	Size	Weight	Top
Surface String	UNK	UNK	UNK
Prot. String			
Production String	4.5"	11.6#	SURFACE
Liner			9555'

<<< Fold Here >>>

All interpretations are opinions based on inferences from electrical or other measurements and we cannot and do not guarantee the accuracy or correctness of any interpretation, and we shall not, except in the case of gross or willful negligence on our part, be liable or responsible for any loss, costs, damages, or expenses incurred or sustained by anyone resulting from any interpretation made by any of our officers, agents or employees. These interpretations are also subject to our general terms and conditions set out in our current Price Schedule.

**Comments**

RBT-GR-TEMP RN IN COMBINATION.  
 CORRELATED TO SCHLUMBERGER CBL LOG DATED: 02 SEP 2004.

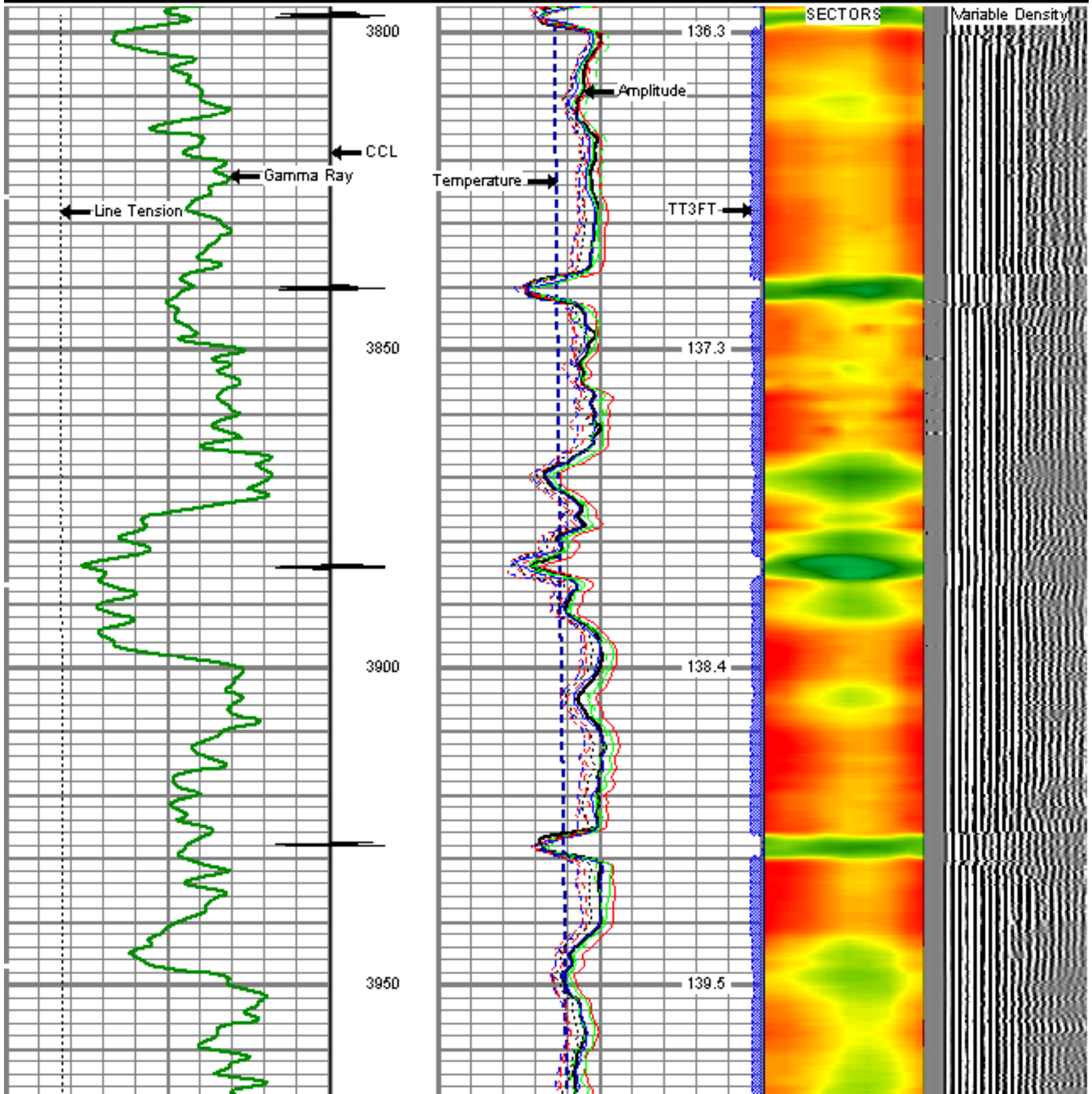
WE APPRECIATE YOUR BUSINESS, MESA WIRELINE LLC, GRAND JUNCTION CO. (970) 257-0

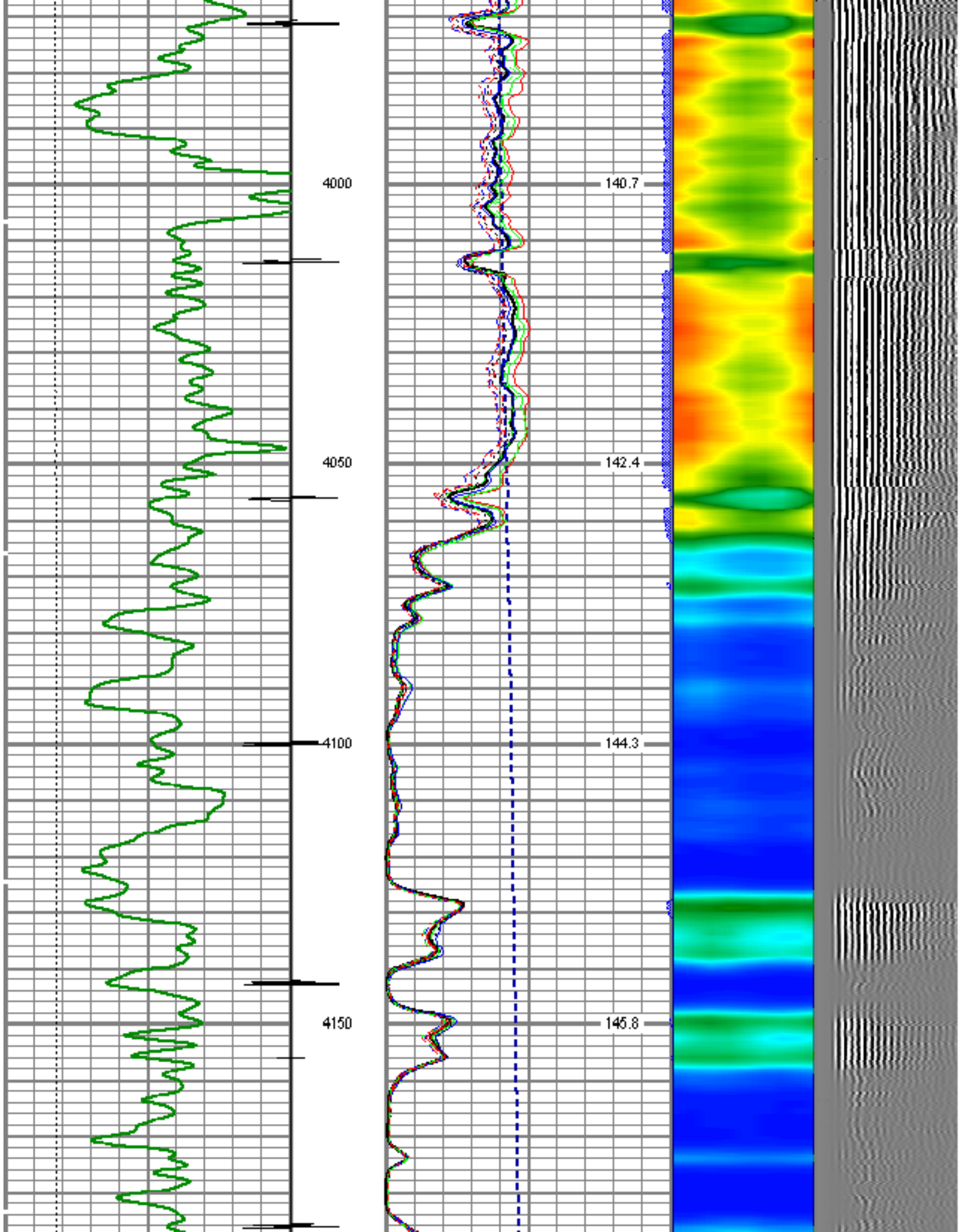


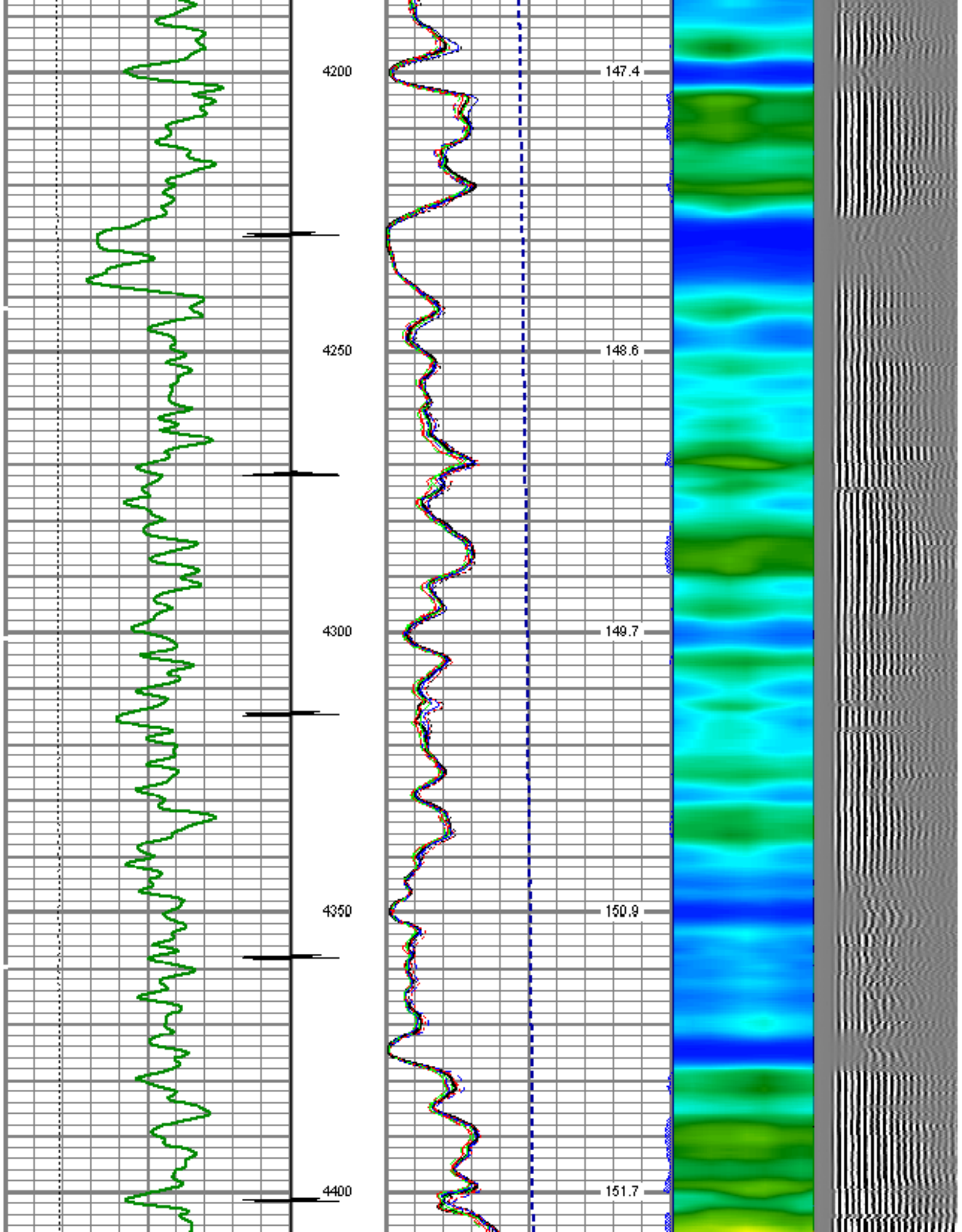
## MAIN LOG SECTION

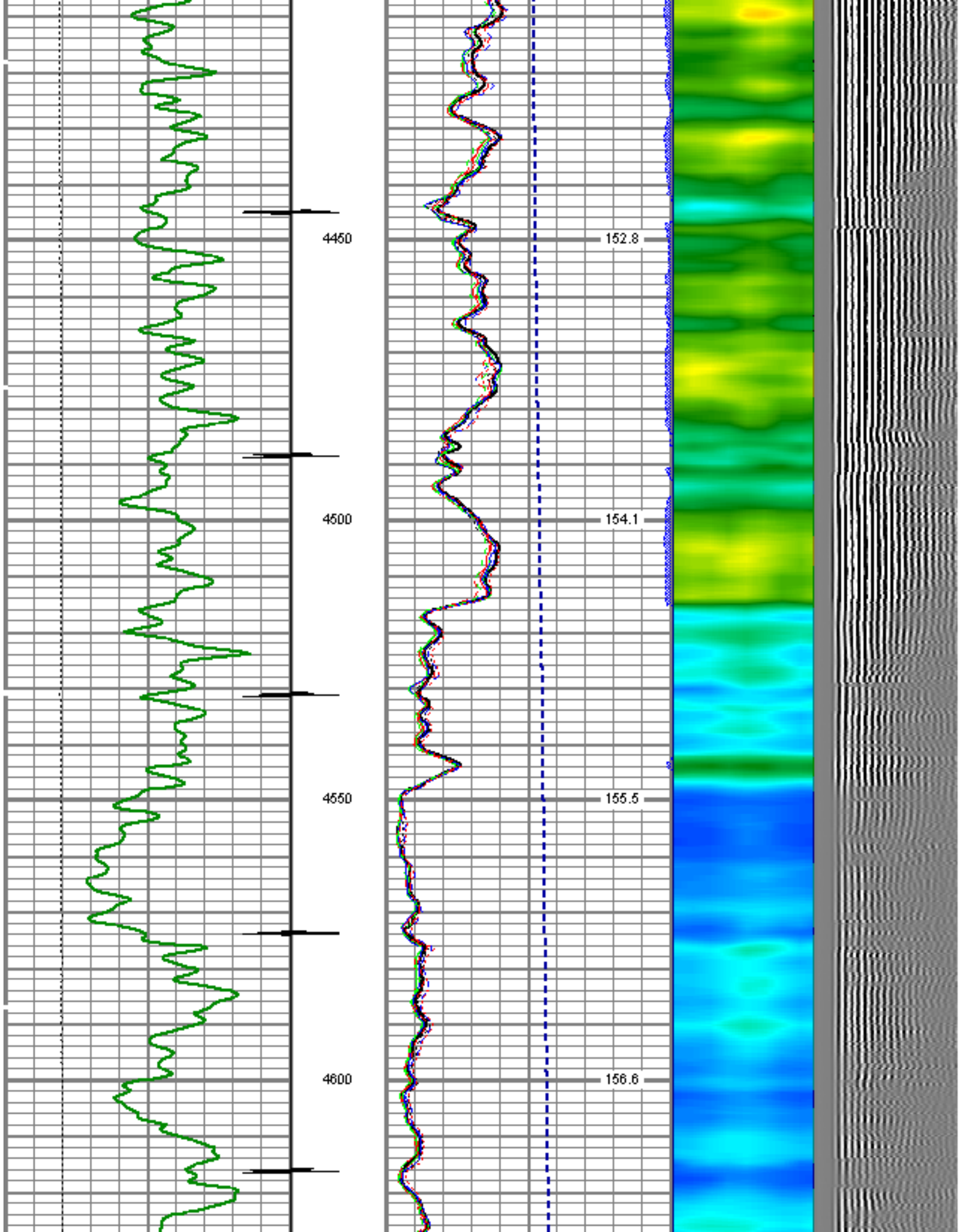
Database File: e\_p11sw\_cbl.db  
 Dataset Pathname: pass3  
 Presentation Format: rbtfinal  
 Dataset Creation: Mon Aug 30 07:44:07 2010 by Log Std Casedhole 08121  
 Charted by: Depth in Feet scaled 1:240

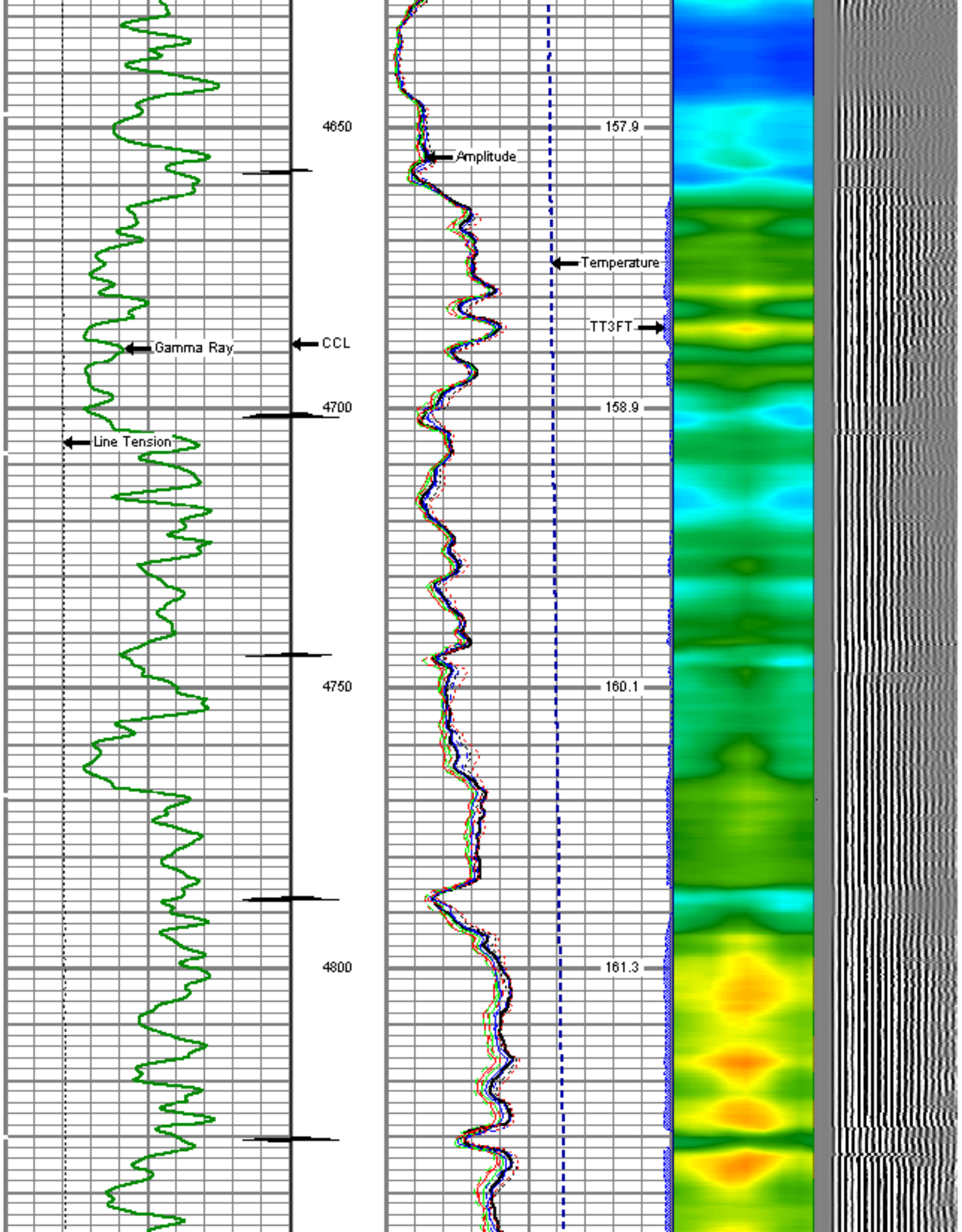
0	LTEN (lb)	5000	0	Amplitude (mV)	100	1	SECTORS	8	Variable Density	
0	GR (GAPI)	150	0	Temp (degF)	100	0		80	200	1200
		CCL	0	TT3FT (usec)	195					
				TBMP (degF)						

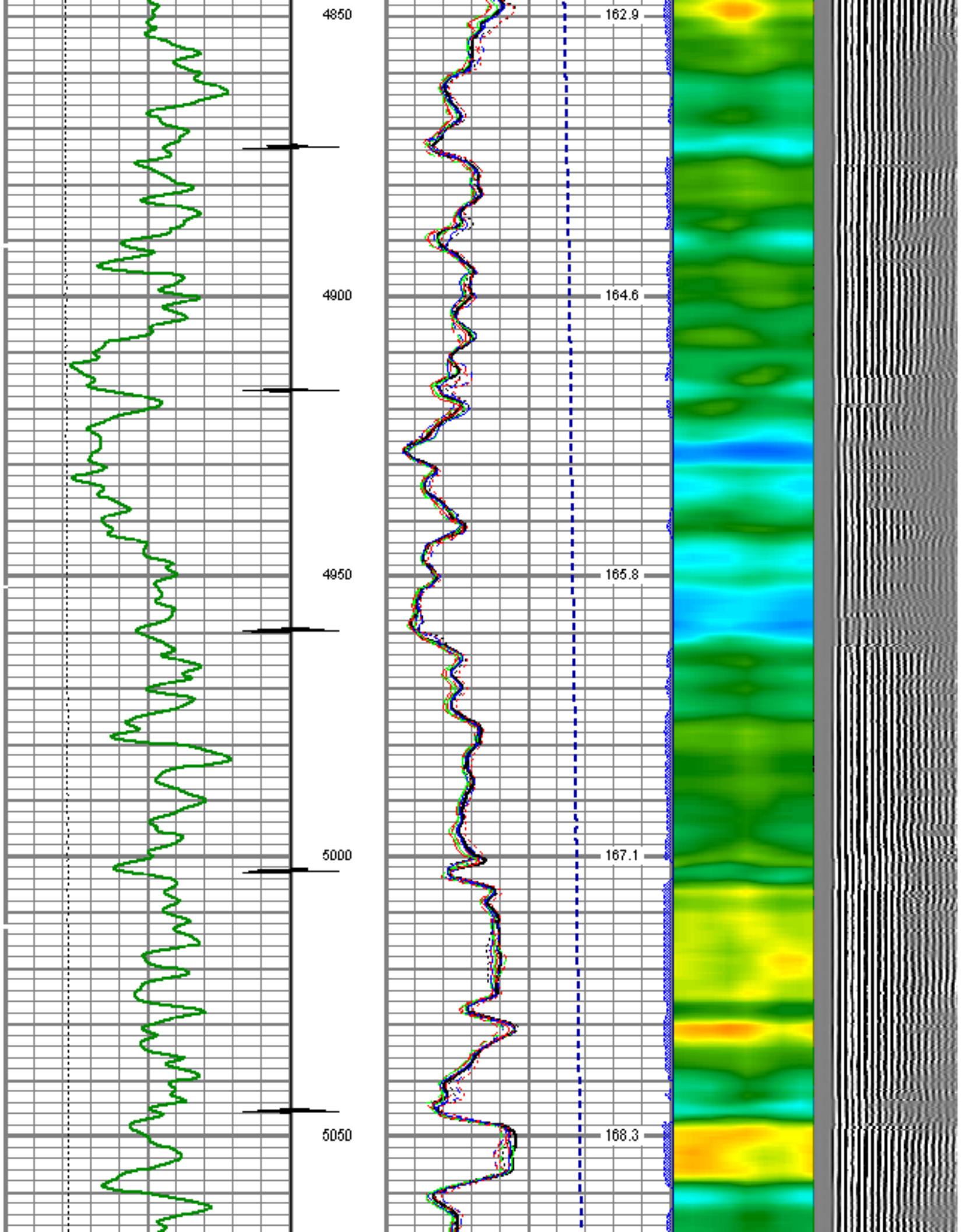


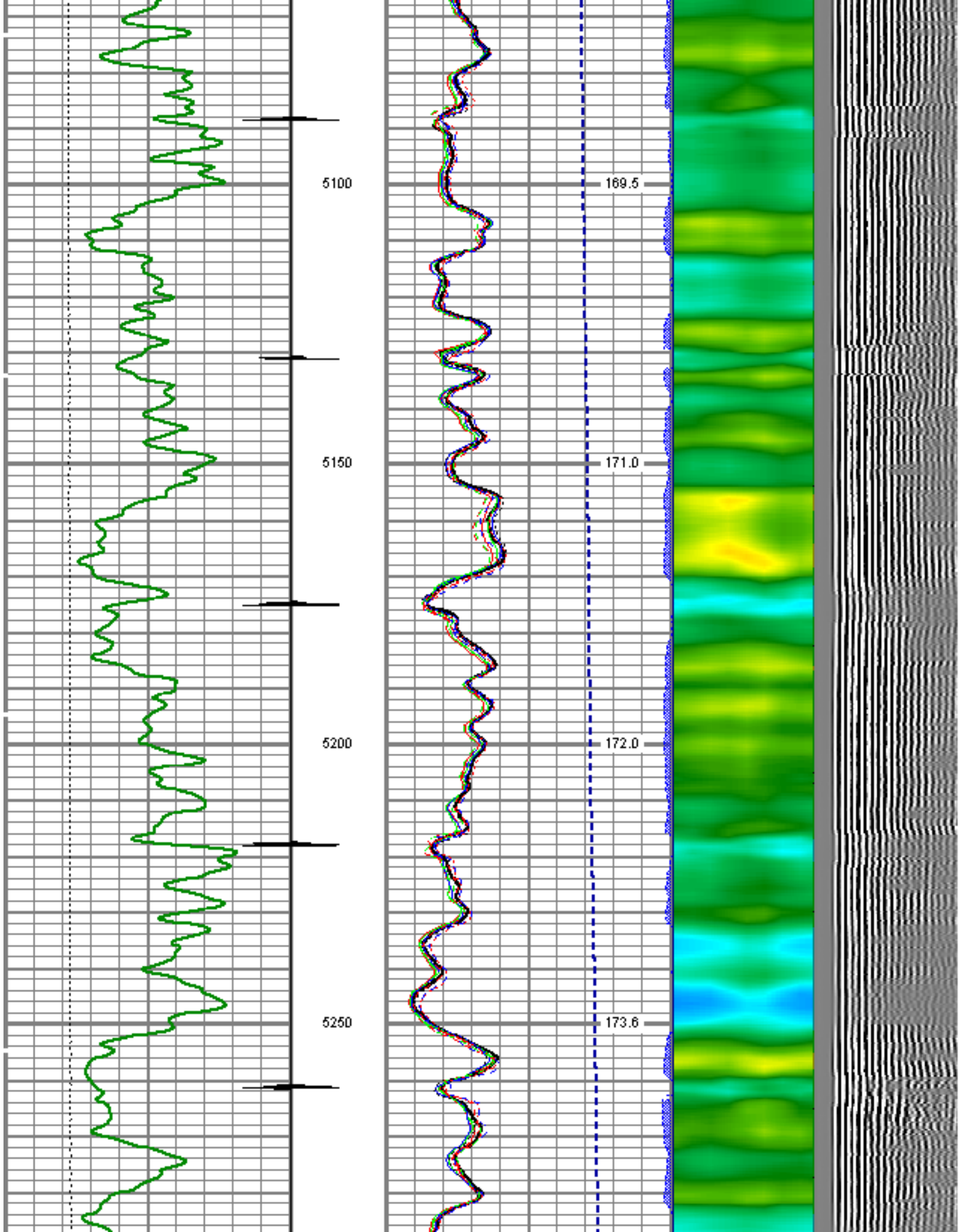


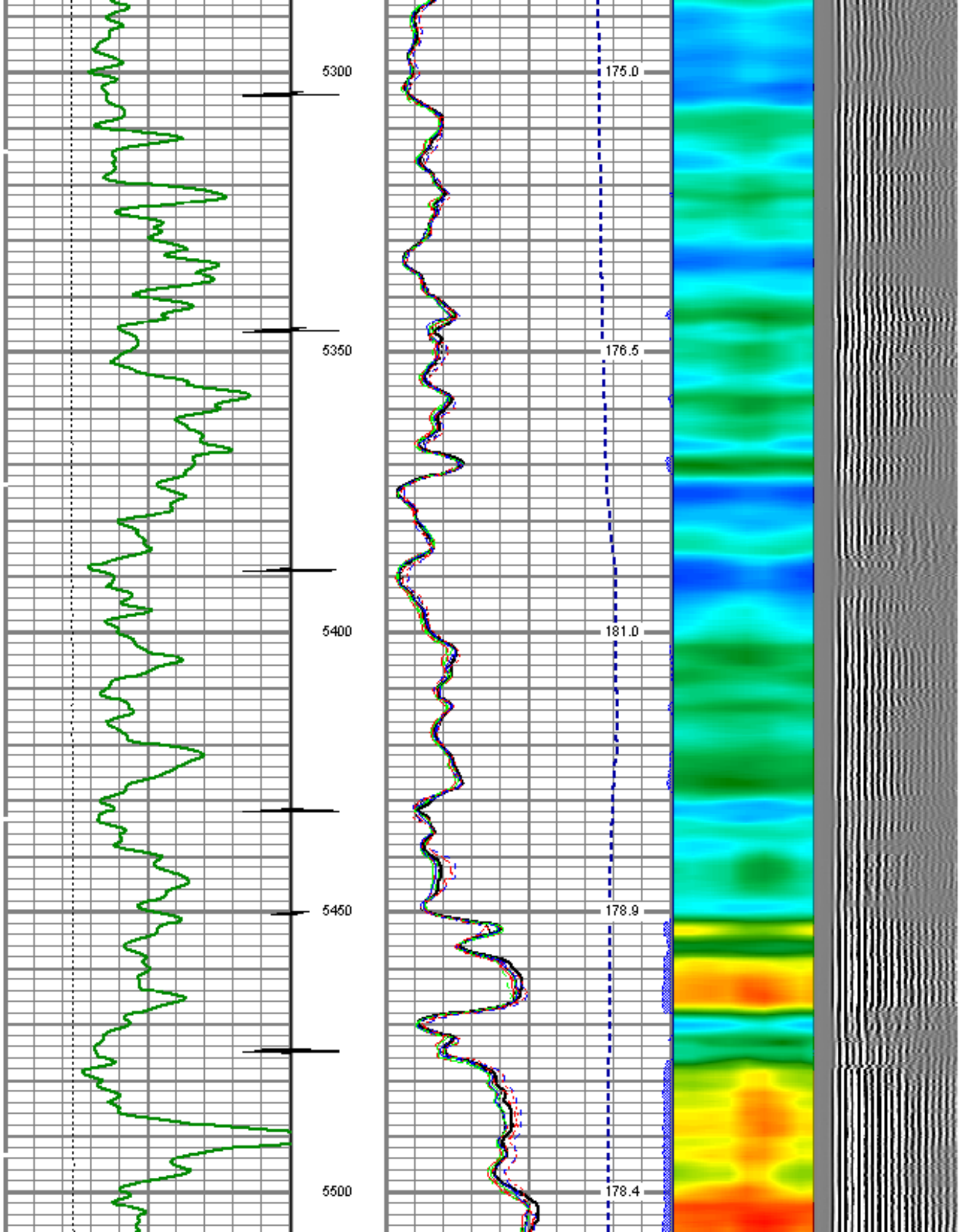


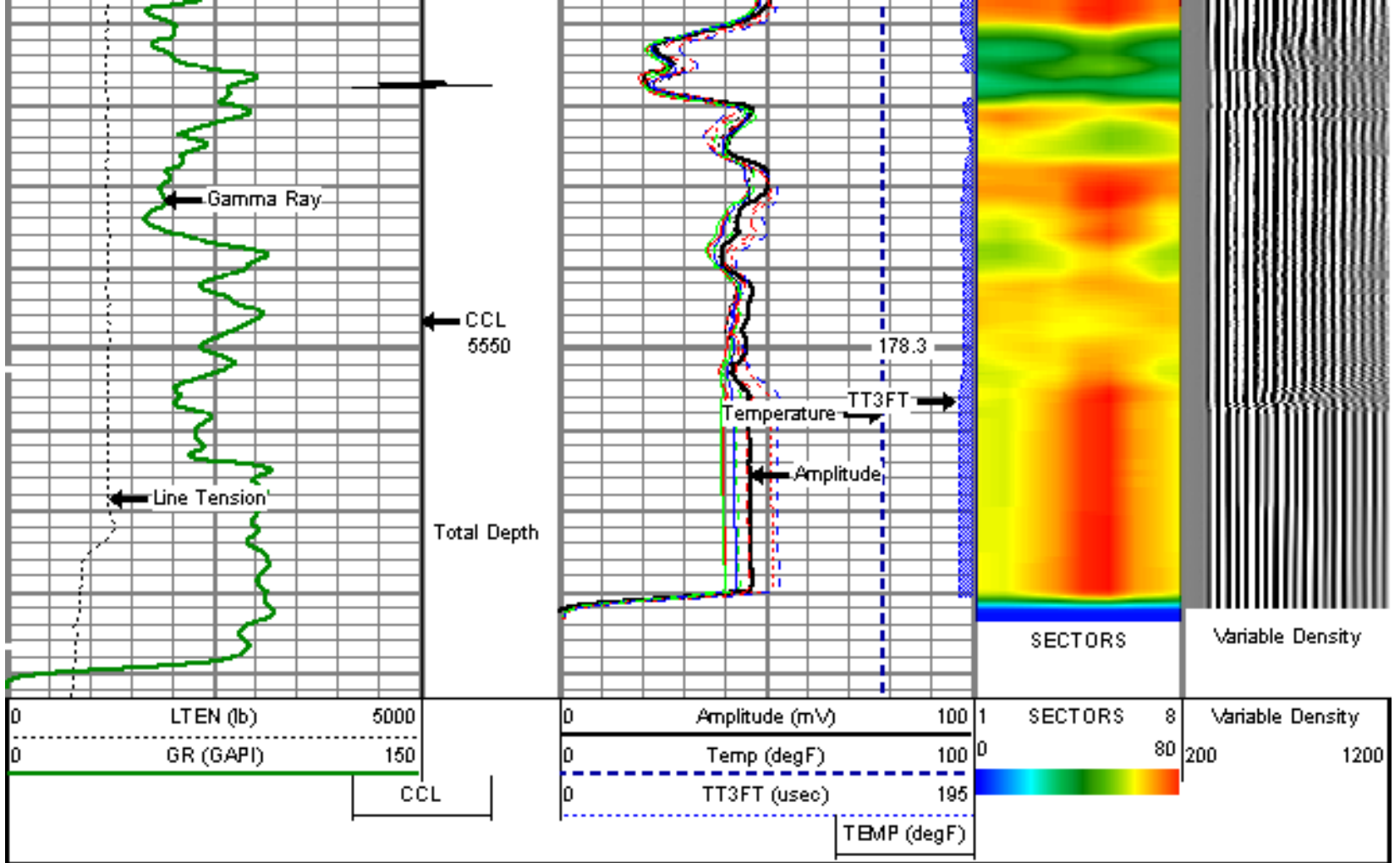




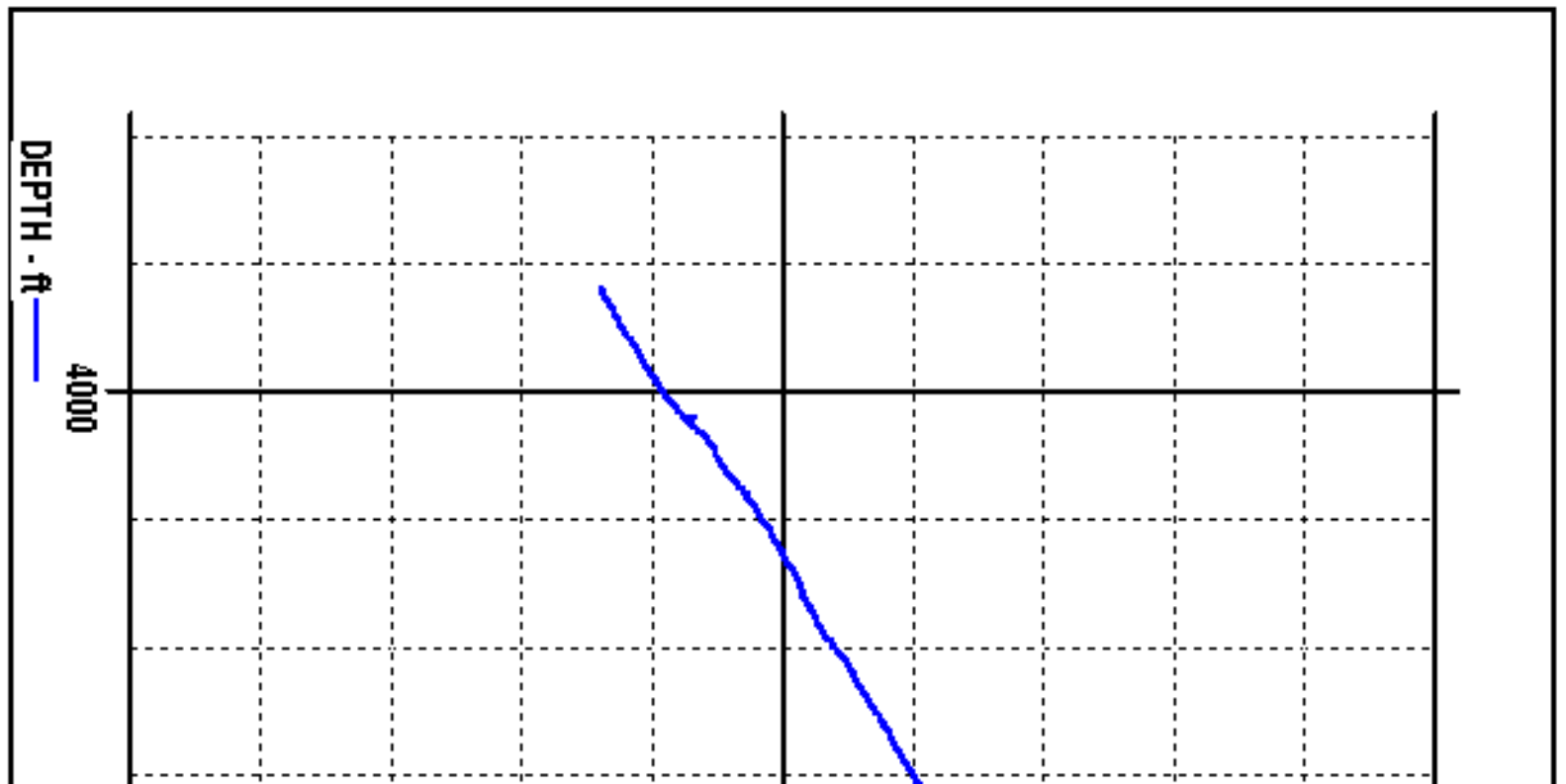


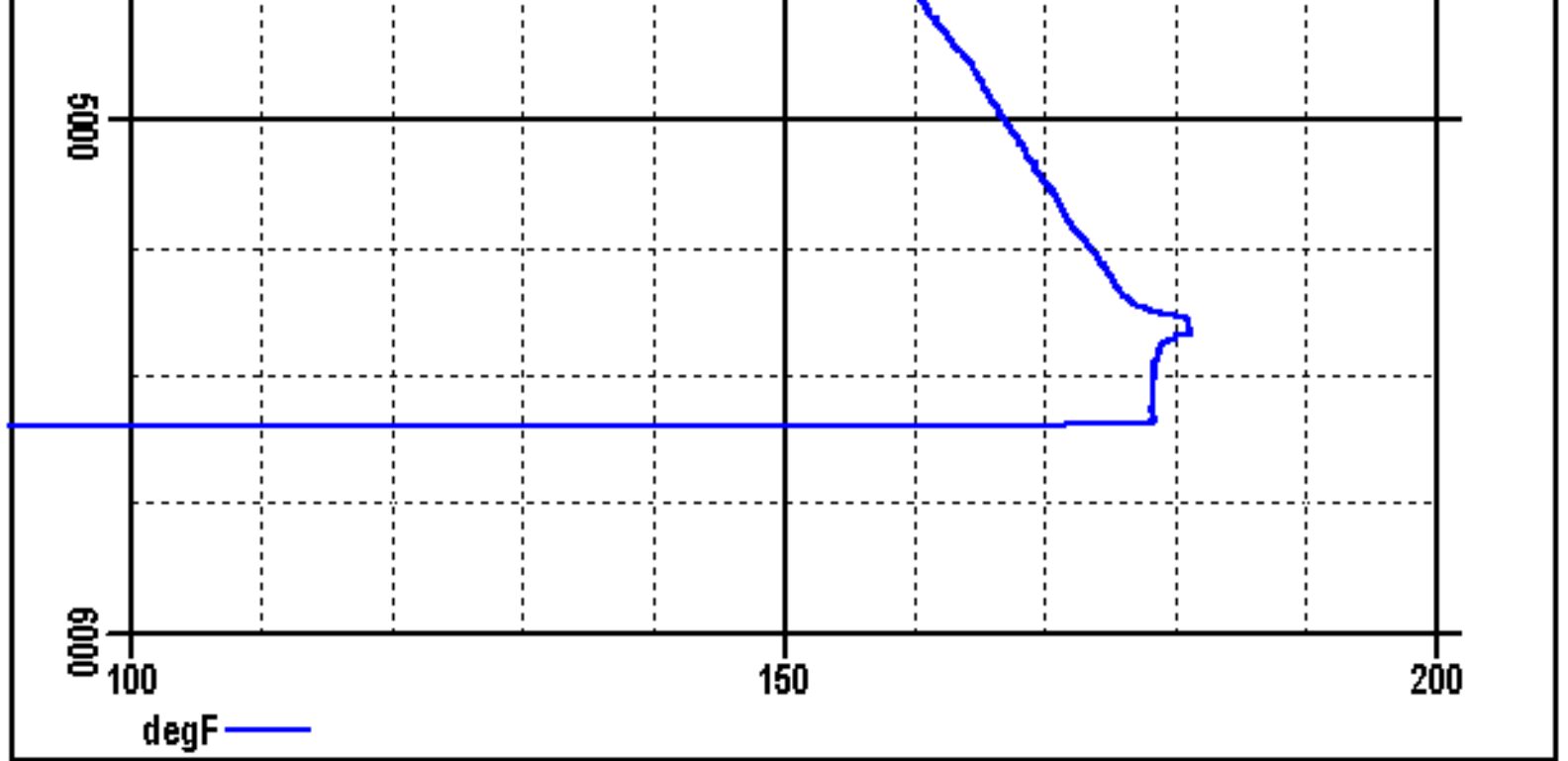






## TEMPERATURE PLOT





Sensor	Offset (ft)	Schematic	Description	Len (ft)	OD (in)	Wt (lb)
CCL	24.39		TITAN	1.02	1.44	1.00
			SNDX_CCL-SNDX_3_13_CCL (000001) CSS Gamma Ray CCL (CCL Sector)	1.92	3.13	11.02
			SONDEX	2.71	2.75	32.00
WVFS3FT	16.63		SNDX_RBT-007 (000004) Radial Bore Tool - Analog 3 1/8	9.47	3.13	140.00
WVFS1	16.63					
WVFS2	16.63					
WVFS3	16.63					
WVFS4	16.63					
WVFS5	16.63					
WVFS6	16.63					
WVFS7	16.63					
WVFS8	16.63					
WVFS5FT	15.63	SONDEX	2.71	2.75	32.00	

GR	7.88		SNDX_GR-SNDX_3_13_GR (000001) Sondex Production Gamma Ray	2.94	3.13	22.05
			SONDEX	2.71	2.75	32.00
TEMP	0.58		TEMP-SNDX_TEMP (SNDX_TEMP_01) Sondex Production Temperature Tool	3.14	1.63	10.00
		Dataset: e_p11sw_cbl.db: field/well/run1/pass3 Total Length: 26.61 ft Total Weight: 280.07 lb O.D.: 3.13 in				

	Company	ENCANA OIL & GAS (USA) INC.
	Well	HMU 11-9 (P11SW)
	Field	MAMM CREEK
	County	GARFIELD
	State	COLORADO