

ENCANA OIL & GAS (USA) INC. - EBUS
DO NOT MAIL-3601 N STAGECOACH RD
LONGMONT, Colorado

Aristocrat Angus 2-4-8

ENSIGN 17

Post Job Summary

Cement Production Casing

Prepared for: Kevin Brakovec
Date Prepared: 4/14/10
Version: 1

Service Supervisor: Dale Sanford

Submitted by: Tim Gilchrist

HALLIBURTON

HALLIBURTON

Service Supervisor Reports

Job Log

Date/Time	Chart #	Activity Code	Pump Rate	Cum Vol	Pump	Pressure (psig)	Comments
04/10/2010 04:47		Test Lines	0.5			3700.0	
04/10/2010 04:50		Pump Spacer 2	3	10		150.0	Water
04/10/2010 04:54		Pump Spacer 1	4	24		200.0	MUD FLUSH
04/10/2010 04:59		Pump Spacer 2	5	20		225.0	CALY FIX WATER
04/10/2010 05:04		Pump Lead Cement	5	146		570.0	330 SKS @ 12.#
04/10/2010 05:26		Pump Tail Cement	5	-70		225.0	200 SKS @ 13.#
04/10/2010 05:47		Drop Top Plug					
04/10/2010 05:48		Pump Displacement	6	128		1375.0	CLAY FIX WATER
04/10/2010 06:11		Bump Plug	3			2430.0	GOOD RET.
04/10/2010 06:15		Check Floats					OK
04/10/2010 06:16		End Job					

The Road to Excellence Starts with Safety

Sold To #: 340078	Ship To #: 2777539	Quote #:	Sales Order #: 7293069
Customer: ENCANA OIL & GAS (USA) INC. - EBUS		Customer Rep: HOPE, CRAIG	
Well Name: Aristocrat Angus		Well #: 2-4-8	API/UWI #:
Field: WATTENBERG	City (SAP): PLATTEVILLE	County/Parish: Weld	State: Colorado
Contractor: ENSIGN		Rig/Platform Name/Num: #17	
Job Purpose: Cement Production Casing			
Well Type: Development Well		Job Type: Cement Production Casing	
Sales Person: FLING, MATTHEW		Srvc Supervisor: SANFORD, DALE	MBU ID Emp #: 219527

Job Personnel

HES Emp Name	Exp Hrs	Emp #	HES Emp Name	Exp Hrs	Emp #	HES Emp Name	Exp Hrs	Emp #
HALE, ROBERT E		470588	HUFF, DAVID Randall		468612	SANFORD, DALE A		219527
THOMPSON, STEVEN Darrin		445340						

Equipment

HES Unit #	Distance-1 way	HES Unit #	Distance-1 way	HES Unit #	Distance-1 way	HES Unit #	Distance-1 way

Job Hours

Date	On Location Hours	Operating Hours	Date	On Location Hours	Operating Hours	Date	On Location Hours	Operating Hours
TOTAL			<i>Total is the sum of each column separately</i>					

Job

Job Times

Formation Name	Top	Bottom	Called Out	Date	Time	Time Zone
Formation Depth (MD)			On Location	10 - Apr - 2010	12:00	MST
Form Type		BHST	On Location	10 - Apr - 2010	02:30	MST
Job depth MD	8282. ft	Job Depth TVD	Job Started	10 - Apr - 2010	04:47	MST
Water Depth		Wk Ht Above Floor	Job Completed	10 - Apr - 2010	06:20	MST
Perforation Depth (MD)	From	To	Departed Loc	10 - Apr - 2010	07:30	MST

Well Data

Description	New / Used	Max pressure psig	Size in	ID in	Weight lbm/ft	Thread	Grade	Top MD ft	Bottom MD ft	Top TVD ft	Bottom TVD ft
Open Hole				7.875				786.	8295.		
Production Casing	Unknown		4.5	4.	11.6			.	8282.		
Surface Casing	Unknown		8.625	8.097	24.		J-55	.	785.		

Tools and Accessories

Type	Size	Qty	Make	Depth	Type	Size	Qty	Make	Depth	Type	Size	Qty	Make
Guide Shoe					Packer					Top Plug			
Float Shoe					Bridge Plug					Bottom Plug			
Float Collar					Retainer					SSR plug set			
Insert Float										Plug Container			
Stage Tool										Centralizers			

Miscellaneous Materials

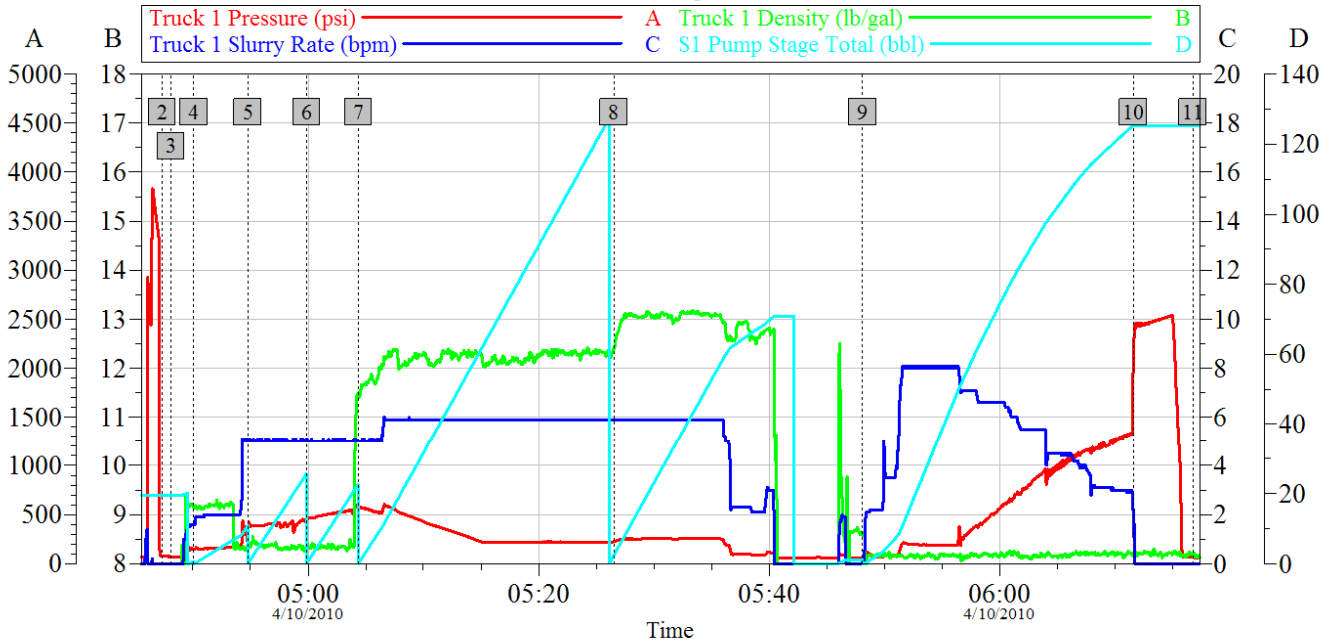
Gelling Agt	Conc	Surfactant	Conc	Acid Type	Qty	Conc %
Treatment Fld	Conc	Inhibitor	Conc	Sand Type	Size	Qty

Fluid Data

Stage/Plug #: 1										
Fluid #	Stage Type	Fluid Name	Qty	Qty uom	Mixing Density lbm/gal	Yield ft ³ /sk	Mix Fluid Gal/sk	Rate bbl/min	Total Mix Fluid Gal/sk	
1	MUD FLUSH III	MUD FLUSH III - SBM (528788)	24.00	bbl	8.4	.0	.0	5.0		
2	Clayfix 3		20.00	bbl	8.4	.0	.0	5.0		
2.5 gal/Mgal		CLAYFIX 3, TOTETANK (101583425)								
3	Versacem 12#	VERSACEM (TM) SYSTEM (452010)	330.0	sacks	12.	2.49	13.91	7.0	13.91	
13.91 Gal		FRESH WATER								
4	Versacem 13#	VERSACEM (TM) SYSTEM (452010)	200.0	sacks	13.	1.95	9.93	5.0	9.93	
9.93 Gal		FRESH WATER								
5	Clayfix Water Displacement			bbl	8.33	.0	.0	7.0		
Calculated Values			Pressures			Volumes				
Displacement		Shut In: Instant		Lost Returns		Cement Slurry		Pad		
Top Of Cement		5 Min		Cement Returns		Actual Displacement		Treatment		
Frac Gradient		15 Min		Spacers		Load and Breakdown		Total Job		
Rates										
Circulating			Mixing			Displacement			Avg. Job	
Cement Left In Pipe		Amount	40 ft	Reason	Shoe Joint					
Frac Ring # 1 @	ID	Frac ring # 2 @	ID	Frac Ring # 3 @	ID	Frac Ring # 4 @	ID			
The Information Stated Herein Is Correct				Customer Representative Signature						

HALLIBURTON

EnCana 4.5" Production Aristocrat Angus 2-4-8



2	Test Lines	04:47:20	3	Test Lines	04:48:05	4	Pump Spacer 1	04:50:04
5	Pump Spacer 2	04:54:46	6	Pump Spacer 1	04:59:51	7	Pump Lead Cement	05:04:21
8	Pump Tail Cement	05:26:31	9	Pump Displacement	05:48:07	10	Bump Plug	06:11:36
11	End Job	06:16:46						

Customer:	EnCana	Job Date:	10-Apr-2010	Sales Order #:	793069
Well Description:	4.5" Production	UWI:			Aristocrat Angus 2-4-8

OptiCem v6.4.2
14-Apr-10 08:40