

ENCANA OIL & GAS (USA) INC. - EBUS  
DO NOT MAIL-3601 N STAGECOACH RD  
LONGMONT, Colorado

Aristocrat Angus 0-2-4

**ENSIGN 17**

## **Post Job Summary**

# **Cement Production Casing**

Prepared for: Kevin Brakovec  
Date Prepared: 4/30/10  
Version: 1

Service Supervisor: Mike Blake

Submitted by: Tim Gilchrist

**HALLIBURTON**

# HALLIBURTON

## Service Supervisor Reports

### Job Log

Date/Time	Chart #	Activity Code	Pump Rate	Cum Vol	Pump	Pressure (psig)	Comments
04/26/2010 05:30		Arrive at Location from Service Center					
04/26/2010 05:45		Safety Huddle					
04/26/2010 06:30		Safety Meeting					
04/26/2010 06:56		Start Job					
04/26/2010 06:57		Test Lines	0.5	1		4245.0	TEST PUMPS AND LINES
04/26/2010 06:58		Pump Water	4	10		145.0	PUMP WATER SPACER
04/26/2010 07:01		Pump Spacer 1	4	24		218.0	PUMP MUD FLUSH
04/26/2010 07:07		Pump Water	4	20		338.0	PUMP WATER SPACER AND CLAY FIX
04/26/2010 07:12		Pump Lead Cement	7	82		476.0	PUMP ( 185 sks ) OF VERSACEM CEMENT AT 12.0#
04/26/2010 07:25		Pump Tail Cement	7	70		253.0	PUMP ( 200 sks ) OF VERSACEM CEMENT AT 13.0#
04/26/2010 07:36		Drop Top Plug					SHUT DOWN AND DROP PLUG AND CLEAN LINES
04/26/2010 07:38		Pump Displacement	7	116		1065.0	PUMP DISPLACEMENT WITH WATER AND CLAY FIX
04/26/2010 07:58		Bump Plug				2155.0	BUMP PLUG AND RELEASED BACK AND CHECK FLOATS HELD
04/26/2010 08:33		Pump Cement		9			PUMP ( 50 sks ) PREMIUM CEMENT AT 15.2# TO FILL THE MOUSE AND THE RAT HOLE
04/26/2010 08:41		End Job					

*The Road to Excellence Starts with Safety*

<b>Sold To #:</b> 340078	<b>Ship To #:</b> 2780110	<b>Quote #:</b>	<b>Sales Order #:</b> 7326763
<b>Customer:</b> ENCANA OIL & GAS (USA) INC. - EBUS		<b>Customer Rep:</b>	
<b>Well Name:</b> Aristocrat Angus		<b>Well #:</b> 0-2-4	<b>API/UWI #:</b> 05-123-30826-00
<b>Field:</b> WATTENBERG	<b>City (SAP):</b> GILCREST	<b>County/Parish:</b> Weld	<b>State:</b> Colorado
<b>Contractor:</b> ENSIGN		<b>Rig/Platform Name/Num:</b> #17	
<b>Job Purpose:</b> Cement Production Casing			
<b>Well Type:</b> Development Well		<b>Job Type:</b> Cement Production Casing	
<b>Sales Person:</b> FLING, MATTHEW		<b>Srvc Supervisor:</b> BLAKE, MICHAEL	<b>MBU ID Emp #:</b> 305760

**Job Personnel**

HES Emp Name	Exp Hrs	Emp #	HES Emp Name	Exp Hrs	Emp #	HES Emp Name	Exp Hrs	Emp #
BLAKE, MICHAEL James		305760	HUFF, DAVID Randall		468612	MCPHERSON, MATTHEW L		455378
WILEY, JAMES A		440080						

**Equipment**

HES Unit #	Distance-1 way	HES Unit #	Distance-1 way	HES Unit #	Distance-1 way	HES Unit #	Distance-1 way
10724567C	24 mile	10824253C	24 mile	10972458	24 mile	11064046C	24 mile

**Job Hours**

Date	On Location Hours	Operating Hours	Date	On Location Hours	Operating Hours	Date	On Location Hours	Operating Hours
<b>TOTAL</b>			<i>Total is the sum of each column separately</i>					

**Job**

**Job Times**

Formation Name	Top	Bottom	Called Out	Date	Time	Time Zone
<b>Formation Depth (MD)</b>			<b>On Location</b>	26 - Apr - 2010	03:00	MST
<b>Form Type</b>		BHST	<b>On Location</b>	26 - Apr - 2010	05:30	MST
<b>Job depth MD</b>	7616. ft	<b>Job Depth TVD</b>	<b>Job Started</b>	26 - Apr - 2010	06:56	MST
<b>Water Depth</b>		<b>Wk Ht Above Floor</b>	<b>Job Completed</b>	26 - Apr - 2010	08:41	MST
<b>Perforation Depth (MD)</b>	<b>From</b>	<b>To</b>	<b>Departed Loc</b>	26 - Apr - 2010	10:00	MST

**Well Data**

Description	New / Used	Max pressure psig	Size in	ID in	Weight lbm/ft	Thread	Grade	Top MD ft	Bottom MD ft	Top TVD ft	Bottom TVD ft
Open Hole				7.875				575.	7525.		
Production Casing	New		4.5	4.	11.6			.	7512.		
Surface Casing	Unknown		8.625	8.097	24.		J-55	.	575.		

**Tools and Accessories**

Type	Size	Qty	Make	Depth	Type	Size	Qty	Make	Depth	Type	Size	Qty	Make
Guide Shoe					Packer					Top Plug			
Float Shoe					Bridge Plug					Bottom Plug			
Float Collar					Retainer					SSR plug set			
Insert Float										Plug Container			
Stage Tool										Centralizers			

**Miscellaneous Materials**

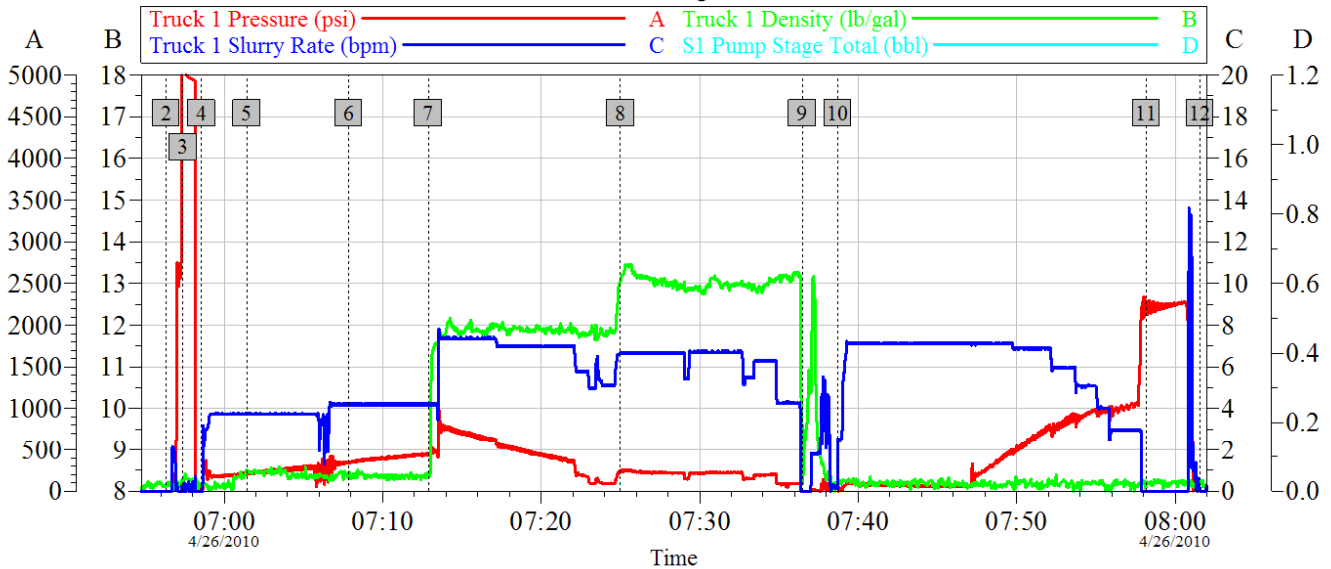
Gelling Agt	Conc	Surfactant	Conc	Acid Type	Qty	Conc %
Treatment Fld	Conc	Inhibitor	Conc	Sand Type	Size	Qty

**Fluid Data**

Stage/Plug #: 1										
Fluid #	Stage Type	Fluid Name	Qty	Qty uom	Mixing Density lbm/gal	Yield ft <sup>3</sup> /sk	Mix Fluid Gal/sk	Rate bbl/min	Total Mix Fluid Gal/sk	
1	MUD FLUSH III	MUD FLUSH III - SBM (528788)	24.00	bbl	8.4	.0	.0	5.0		
2	Clayfix 3		20.00	bbl	8.4	.0	.0	5.0		
2.5 gal/Mgal		CLAYFIX 3, TOTETANK (101583425)								
3	Versacem 12#	VERSACEM (TM) SYSTEM (452010)	185.0	sacks	12.	2.49	13.91	7.0	13.91	
13.91 Gal		FRESH WATER								
4	Versacem 13#	VERSACEM (TM) SYSTEM (452010)	200.0	sacks	13.	1.95	9.93	5.0	9.93	
9.93 Gal		FRESH WATER								
5	Clayfix Water Displacement		116.00	bbl	8.33	.0	.0	7.0		
Calculated Values			Pressures			Volumes				
Displacement		Shut In: Instant		Lost Returns		Cement Slurry		Pad		
Top Of Cement		5 Min		Cement Returns		Actual Displacement		Treatment		
Frac Gradient		15 Min		Spacers		Load and Breakdown		Total Job		
Rates										
Circulating			Mixing			Displacement			Avg. Job	
Cement Left In Pipe		Amount	26 ft	Reason	Shoe Joint					
Frac Ring # 1 @	ID	Frac ring # 2 @	ID	Frac Ring # 3 @	ID	Frac Ring # 4 @	ID			
The Information Stated Herein Is Correct				Customer Representative Signature						

# HALLIBURTON

## EnCana 4.5" Production Aristocrat Angus 0-2-4



### Global Event Log

2	Start Job	06:56:20	3	Test Lines	06:57:23
4	Pump Water	06:58:34	5	Pump Mud Flush	07:01:25
6	Pump Water	07:07:51	7	Pump VersaCem Cement @ 12.0#	07:12:52
8	Pump VersaCem Cement @ 13.0#	07:25:00	9	Drop Plug	07:36:28
10	Pump Displacement	07:38:43	11	Bump Plug	07:58:12
12	End Job	08:01:34			

Customer: EnCana  
Well Description: 4.5" Production

Job Date: 26-Apr-2010  
UWI:

Sales Order #: 7326763  
Aristocrat Angus 0-2-4

OptiCem v6.4.2  
30-Apr-10 14:39