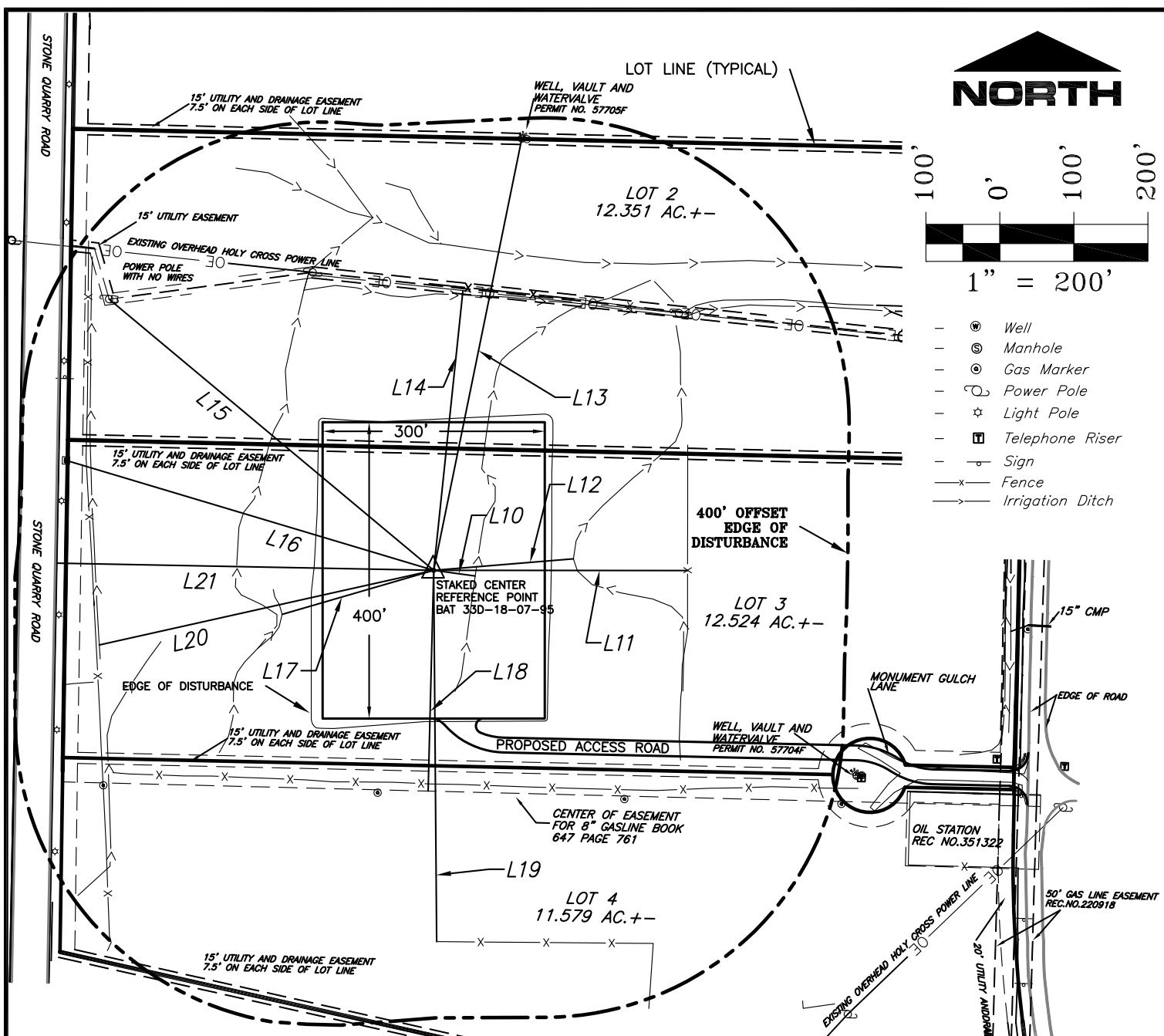


# LOCATION DRAWING



— PROPERTY LINES AND EASEMENTS ARE SHOWN PER THE PLAT OF MONUMENT RIDGE SUBDIVISION, COUNTY OF GARFIELD, STATE OF COLORADO, ACCORDING TO THE PLAT THEREOF RECORDED AS RECEPTION NO. 679333, UNLESS OTHERWISE NOTED.

Line Table

Line #	Length	Direction	Description	Line #	Length	Direction	Description
L10	57'	S82° 12' E	Ditch	L16	518'	N73° 20' W	Electric Box
L11	343'	S89° 57' E	Fence	L17	213'	S73° 49' W	Ditch
L12	189'	N85° 18' E	Ditch	L18	298'	S1° 27' W	Pipeline
L13	595'	N11° 32' E	Well	L19	501'	S0° 28' E	Fence
L14	380'	N5° 58' E	Powerline	L20	463'	S77° 25' W	Ditch
L15	571'	N50° 07' W	Power Pole	L21	509'	N88° 55' W	Curb

## SURVEYORS STATEMENT:

I, ELWOOD BARRY GILES, BEING A REGISTERED LAND SURVEYOR IN THE STATE OF COLORADO, DO HERBY CERTIFY THAT THIS PLAT REPRESENTS A SURVEY PERFORMED BY ME OR UNDER MY DIRECT SUPERVISION SEPTEMBER 17, 2010 AND THE REFERENCE POINT AND PAD HAS BEEN STAKED AS SHOWN.

29 SEPT, 2010

ELWOOD BARRY GILES  
COLORADO LS 38150

DATE



**SGM INC.**  
118 W. 6th Street, Suite 200  
Glenwood Springs, Colorado 81601  
(970) 945-1004 (FAX 945-5948)  
Meeker, Colorado (970) 878-5180

Scale: 1"=200'

Sheet 1A of 11

Monument Ridge Pad

Addendum to Well Location Plat for Antero Resources Monument Ridge Pad  
Section 18, T. 7S., R. 95 W., 6th P.M., Garfield County, CO

Job# 2006-479.026 Date: 9.29.2010 By: reb File: Ant.Mon.Rid\_BM