

# CEMENT JOB REPORT



CUSTOMER EOG Resources Inc.		DATE 07-AUG-10	F.R. # 1001664488	SERV. SUPV. SCOTT D SMITH	
LEASE & WELL NAME CRITTER CREEK #9-15H - API 05123311810000		LOCATION 15-11N-63W		COUNTY-PARISH-BLOCK Weld Colorado	
DISTRICT Brighton		DRILLING CONTRACTOR RIG # True #30		TYPE OF JOB Surface	

SIZE & TYPE OF PLUGS		LIST-CSG-HARDWARE		PHYSICAL SLURRY PROPERTIES					
Cement Plug, Rubber, Top 9-5/8 in	Guide Shoe, Cement Nose, 9-5/8 in	SACKS OF CEMENT	SLURRY WGT PPG	SLURRY YLD FT <sup>3</sup>	WATER GPS	PUMP TIME HR:MIN	Bbl SLURRY	Bbl MIX WATER	
	Float Collar, Auto Fill, 9-5/8 - 8rd								
MATERIALS FURNISHED BY BJ									
Fresh water		0	8.34	0	0	00:00	15		
Type III + additives		615	14.5	1.40	6.82	01:30	153.55	99.84	
15 Bbls fresh water then drilling mud		0	8.34	0	0	00:00	102.4		
Type III + 2% CaCl on side if needed		100	14.5	1.39	6.81		24.76	16.22	
Available Mix Water 500 Bbl. Available Displ. Fluid 400 Bbl.							TOTAL	295.71 116.06	

HOLE			TBG-CSG-D.P.				COLLAR DEPTHS			
SIZE	% EXCESS	DEPTH	SIZE	WGT.	TYPE	DEPTH	GRADE	SHOE	FLOAT	STAGE
13.5	0	1371	9.625	36	CSG	1371	J-55	1371	1325	0

LAST CASING			PKR-CMT RET-BR PL-LINER			PERF. DEPTH		TOP CONN		WELL FLUID	
SIZE	WGT	TYPE	DEPTH	BRAND & TYPE	DEPTH	TOP	BTM	SIZE	THREAD	TYPE	WGT.
18	84		60	No Packer	0	0	0	9.625	8 RD	WATER BASED MU	8.4

DISPL. VOLUME		DISPL. FLUID		CAL. PSI	CAL. MAX PSI	OP. MAX	MAX TBG PSI	MAX CSG PSI	MIX WATER
VOLUME	UOM	TYPE	WGT.	BUMP PLUG	TO REV.	SQ. PSI	RATED	Operator	Operator
102.4	BBLs	15 Bbls fresh water th	8.34	423	0	0	0	0	2816 1500 Rlg Tank

### Circulation Prior to Job

Circulated Well: Rlg ☒ BJ ☐      Circulation Time: 1.5      Circulation Rate: 5 BPM  
 Mud Density In: 8.3 LBS/GAL      Mud Density Out: 8.3 LBS/GAL      PV & YP Mud In: 0      PV & YP Mud Out: 0  
 Gas Present: NO ☒ YES ☐      Units:      Solids Present at End of Circulation: NO ☒ YES ☐

### Displacement And Mud Removal

Displaced By: Rlg ☐ BJ ☒      Amount Bled Back After Job: .5 BBLs  
 Returns During Job: ☐ NONE ☐ PARTIAL ☒ FULL      Method Used to Verify Returns: Visual  
 Cement Returns at Surface: ☒ YES ☐ NO      Were Returns Planned at Surface: ☐ NO ☒ YES  
 Pipe Movement: ☐ ROTATION ☐ RECIPROCATION ☒ NONE ☐ UNABLE DUE TO STUCK PIPE  
 Centralizers: ☐ NO ☒ YES      Quantity: 12      Type: ☒ BOW ☐ RIGID  
 Job Pumped Through: ☐ CHOKE MANIFOLD ☐ SQUEEZE MANIFOLD ☒ MANIFOLD ☐ NO MANIFOLD

### Plugs

Number of Attempts by BJ: 0      Competition: 0      Wiper Balls Used: ☒ NO ☐ YES      Quantity:  
 Plug Catcher Used: ☒ NO ☐ YES      Parabow Used: ☒ NO ☐ YES  
 Was There a Bottom: ☒ NO ☐ YES      Top of Plug: 0 FT      Bottom of Plug: 0 FT

### Squeezes (Update Original Treatment Report for Primary Job)

BLOCK SQUEEZE ☐      SHOE SQUEEZE ☐      TOP OF LINER SQUEEZE ☐      PLANNED ☐ UNPLANNED ☐  
 Liner Packer: ☒ NO ☐ YES      Bond Log: ☒ NO ☐ YES      PSI Applied: 0      Fluid Weight: 0 LBS/GAL

### Casing Test (Update Original Treatment Report for Primary Job)

Casing Test Pressure: 0 PSI      With 0 LBS/GAL Mud      Time Held: 00 Hours 00 Minutes

### Shoe Test (Update Original Treatment Report for Primary Job)

Depth Drilled out of Shoe: 0 FT      Target EMW: 0 LBS/GAL      Actual EMW: 0 LBS/GAL  
 Number of Times Tests Conducted: 0      Mud Weight When Test was Conducted: 0 LBS/GAL

EXPLANATION: TROUBLE SETTING TOOL, RUNNING CSG, ETC. PRIOR TO CEMENTING: None

# CEMENT JOB REPORT



Problems Before Job (I.E. Running Casing, Circulating Well, ETC)

n/a

Problems During Job (I.E. Lost Returns, Equipment Failure, Bulk Delivery, Foaming, ETC)

Lost electrical for bottom controls on MCM

Problems After Job (I.E. Gas at Surface, Float Equipment Failed, ETC)

n/a

## PRESSURE/RATE DETAIL

## EXPLANATION

TIME HR:MIN.	PRESSURE - PSI		RATE BPM	Bbl. FLUID PUMPED	FLUID TYPE	SAFETY MEETING: BJ CREW <input checked="" type="checkbox"/> CO. REP. <input type="checkbox"/>	
	PIPE	ANNULUS				TEST LINES	2960 PSI
						CIRCULATING WELL - RIG	<input checked="" type="checkbox"/> BJ <input type="checkbox"/>
08:30	0	0	0	0	NONE	Pre Job Rig Up Safety Meeting	
15:00	0	0	0	0	NONE	Job Safety Meeting	
15:55	2960	0	0	0	H2O	Pressure Test	
16:00	56	0	4.8	15	H2O	Pre Flush	
16:15	180	0	4.8	160	CMT	615 sks Type III + 1% Calcium Chloride; .25 bls/sk Cello Flake	
16:55	0	0	0	0	NONE	Shut down, Wash up, Drop plug	
17:05	64	0	6	40	H2O	Displacement	
17:17	200	0	6	20	H2O	Displacement Rate / Pressure Change	
17:20	300	0	4.8	15	H2O	Displacement Rate / Pressure Change	
17:23	360	0	2.4	15	H2O	Displacement Rate / Pressure Change	
17:29	300	0	0	0	NONE	Shut down (5 minute wait period for cement)	
17:34	510	0	2.4	5	H2O	Displacement Rate / Pressure Change	
17:36	400	0	0	0	NONE	Shut down (5 minute wait period for cement)	
17:41	560	0	2.4	5	H2O	Displacement Rate / Pressure Change	
17:43	540	0	2	3.5	H2O	Displacement Rate / Pressure Change	
17:45	540	0	2	103.5	H2O	Bump Plug	
17:50	0	0	0	0	NONE	Plug Down	
17:55	1550	0	1.3	.5	H2O	Casing Test	
18:25	0	0	0	0	NONE	Stop Service	
18:30	0	0	0	0	NONE	Post Job Rig Down Safety Meeting	

BUMPED PLUG	PSI TO BUMP PLUG	TEST FLOAT EQUIP.	BBL.CMT RETURNS/ REVERSED	TOTAL BBL. PUMPED	PSI LEFT ON CSG	SPOT TOP OUT CEMENT	Service Supervisor Signature:
<input checked="" type="checkbox"/> Y <input type="checkbox"/> N	1030	<input checked="" type="checkbox"/> Y <input type="checkbox"/> N	27	278.5	0	<input checked="" type="checkbox"/> Y <input type="checkbox"/> N	

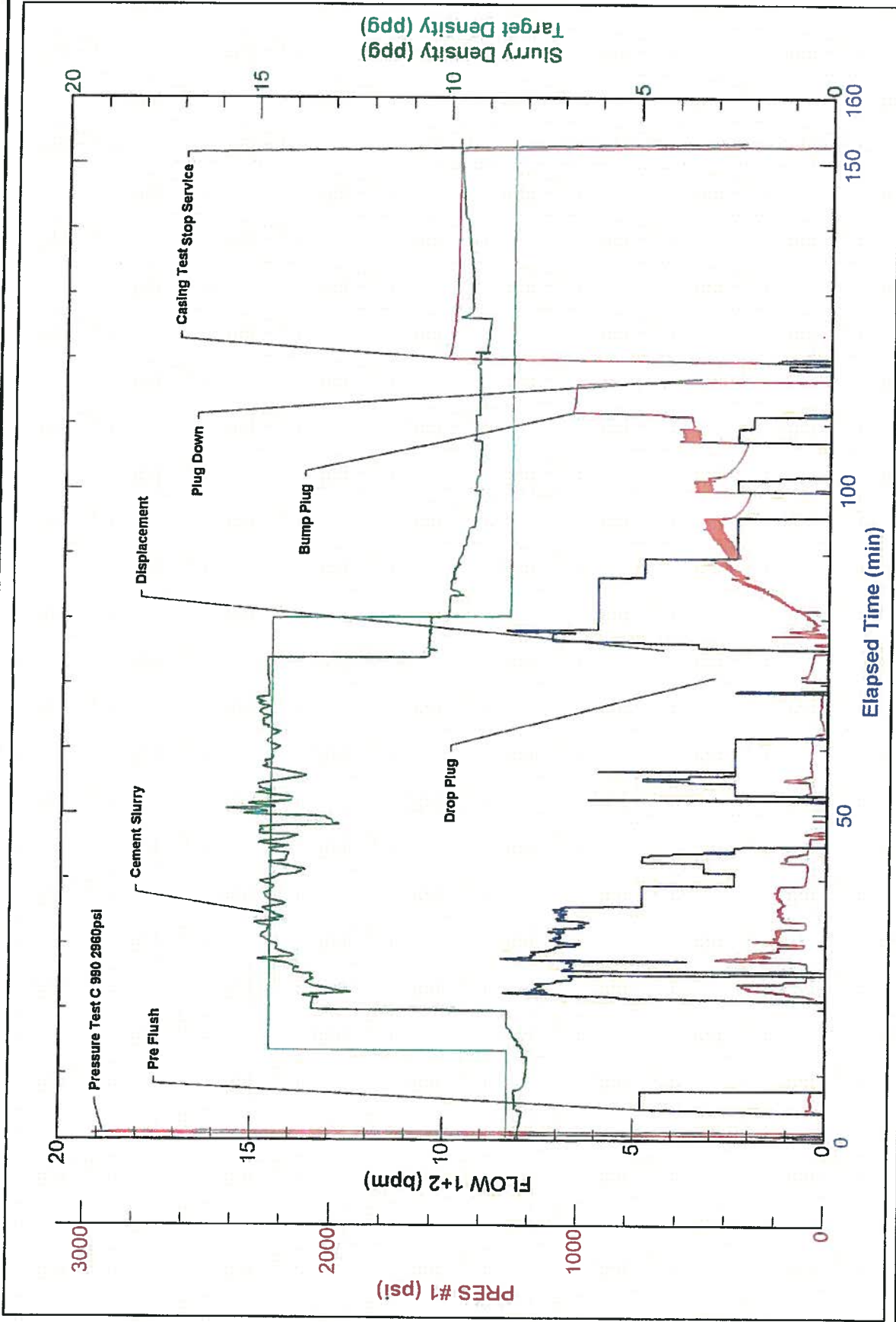


BJ Services JobMaster Program Version 3.20

Job Number: 10015

Customer:

Well Name:



BJ Services

Job Start: Saturday, August 07, 2010