

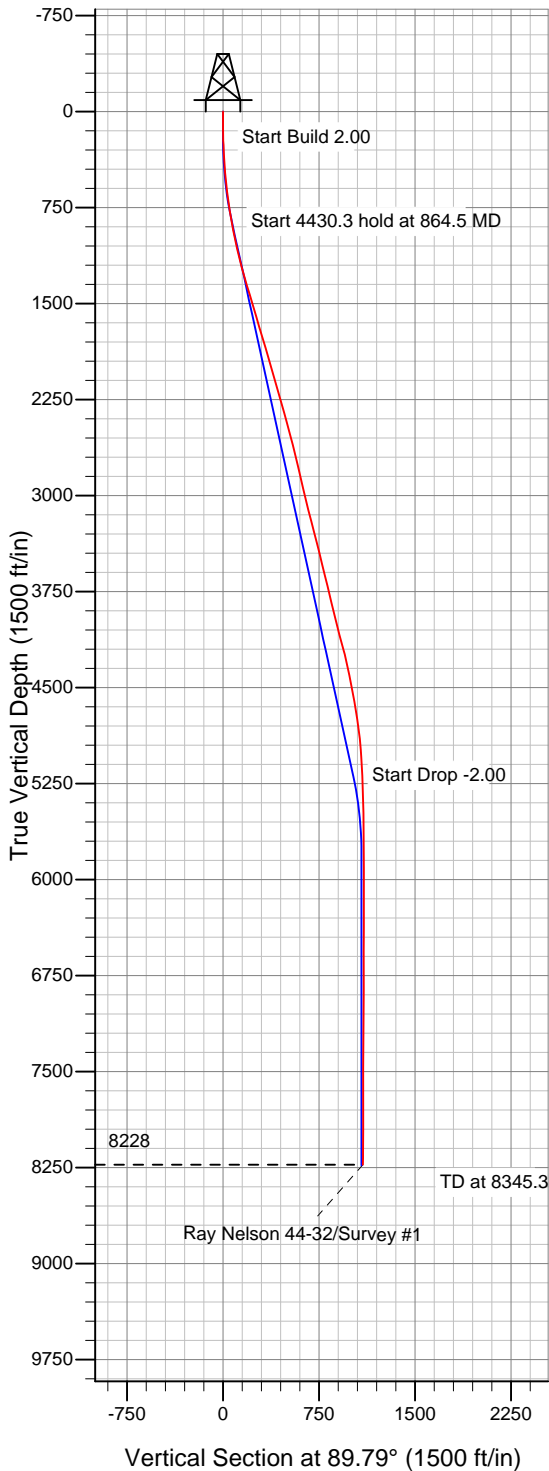
Well Name: Ray Nelson 44-32

Surface Location: Ray Nelson/Brown Pad Sec.32-T2N-R68W
 North American Datum 1983 , US State Plane 1983 , Colorado Northern Zone
 Ground Elevation: 4980.0

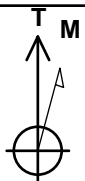
+N/-S	+E/-W	Northing	Easting	Latitude	Longitude	Slot
0.0	0.0	1275963.60	3133259.57	40° 5' 23.744 N	105° 1' 25.333 W	

Original Well Elev WELL @ 4993.0ft (Original Well Elev)

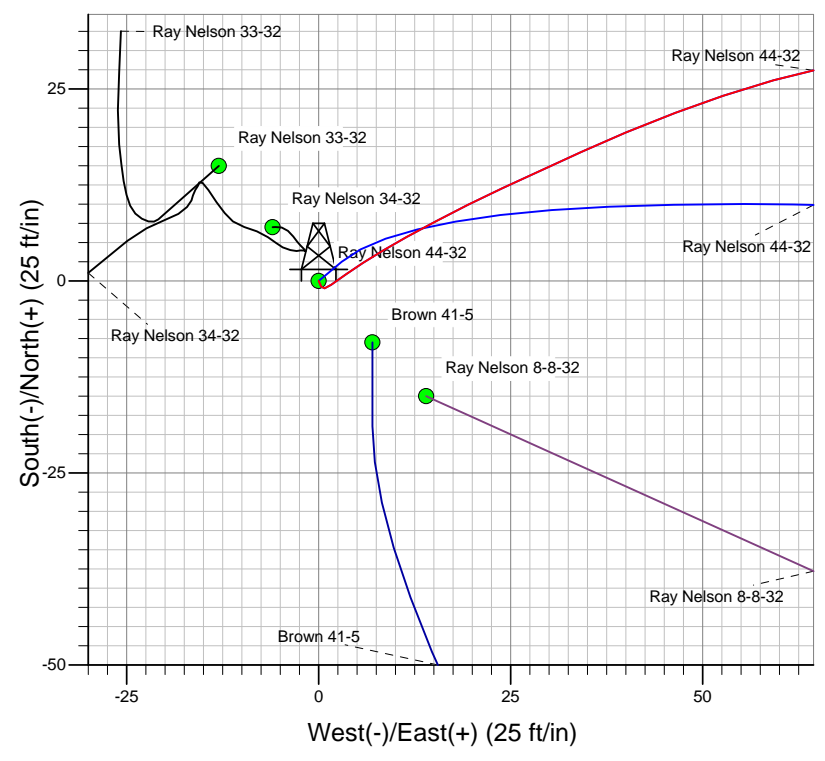
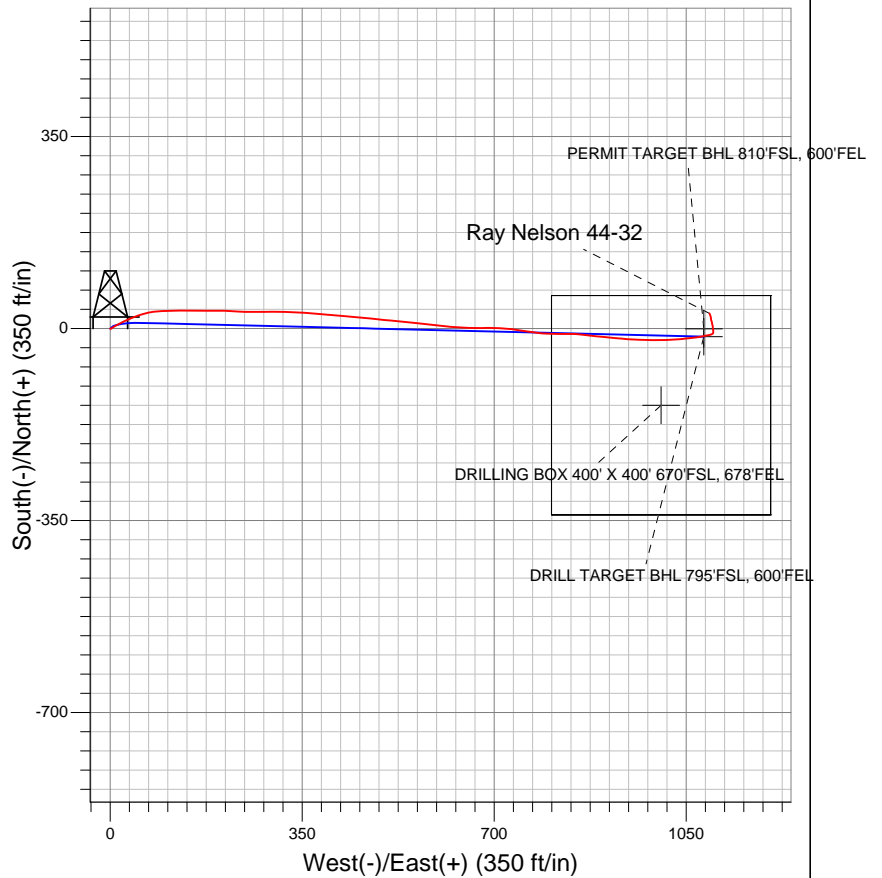
EnCana Oil & Gas Weld County CO



Ray Nelson 44-32
 Wellbore #1
 9:51, March 14 2010



Azimuths to True North
 Magnetic North: 9.13°
 Magnetic Field
 Strength: 53111.4snT
 Dip Angle: 66.81°
 Date: 12/31/2009
 Model: IGRF200510





EnCana Oil & Gas Weld County CO

SEC.32-T2N-R68W

Ray Nelson/Brown Pad Sec.32-T2N-R68W

Ray Nelson 44-32

Wellbore #1

Survey: Survey #1

Standard Survey Report

14 March, 2010

Company:	EnCana Oil & Gas Weld County CO	Local Co-ordinate Reference:	Well Ray Nelson 44-32
Project:	SEC.32-T2N-R68W	TVD Reference:	WELL @ 4993.0ft (Original Well Elev)
Site:	Ray Nelson/Brown Pad Sec.32-T2N-R68W	MD Reference:	WELL @ 4993.0ft (Original Well Elev)
Well:	Ray Nelson 44-32	North Reference:	True
Wellbore:	Wellbore #1	Survey Calculation Method:	Minimum Curvature
Design:	Wellbore #1	Database:	Compass

Project	SEC.32-T2N-R68W, Weld County, Colorado		
Map System:	US State Plane 1983	System Datum:	Mean Sea Level
Geo Datum:	North American Datum 1983		
Map Zone:	Colorado Northern Zone		Using geodetic scale factor

Site	Ray Nelson/Brown Pad Sec.32-T2N-R68W				
Site Position:		Northing:	1,275,978.53ft	Latitude:	40° 5' 23.892 N
From:	Lat/Long	Easting:	3,133,246.49ft	Longitude:	105° 1' 25.500 W
Position Uncertainty:	0.0 ft	Slot Radius:	"	Grid Convergence:	0.31 °

Well	Ray Nelson 44-32					
Well Position	+N/-S	0.0 ft	Northing:	1,275,963.60 ft	Latitude:	40° 5' 23.744 N
	+E/-W	0.0 ft	Easting:	3,133,259.57 ft	Longitude:	105° 1' 25.333 W
Position Uncertainty		0.0 ft	Wellhead Elevation:	ft	Ground Level:	4,980.0 ft

Wellbore	Wellbore #1				
Magnetics	Model Name	Sample Date	Declination (°)	Dip Angle (°)	Field Strength (nT)
	IGRF200510	12/31/2009	9.13	66.81	53,111

Design	Wellbore #1				
Audit Notes:					
Version:	1.0	Phase:	ACTUAL	Tie On Depth:	0.0
Vertical Section:	Depth From (TVD) (ft)	+N/-S (ft)	+E/-W (ft)	Direction (°)	
	0.0	0.0	0.0	89.79	

Survey Program	Date	3/14/2010			
From (ft)	To (ft)	Survey (Wellbore)	Tool Name	Description	
134.0	8,360.0	Survey #1 (Wellbore #1)	MWD	MWD - Standard	

Survey										
Measured Depth (ft)	Inclination (°)	Azimuth (°)	Vertical Depth (ft)	+N/-S (ft)	+E/-W (ft)	Vertical Section (ft)	Dogleg Rate (°/100ft)	Build Rate (°/100ft)	Turn Rate (°/100ft)	
0.0	0.00	0.00	0.0	0.0	0.0	0.0	0.00	0.00	0.00	
134.0	0.70	155.60	134.0	-0.7	0.3	0.3	0.52	0.52	0.00	
228.0	1.60	54.10	228.0	-0.5	1.6	1.6	1.99	0.96	-107.98	
290.0	2.90	54.80	289.9	0.9	3.6	3.6	2.10	2.10	1.13	
384.0	4.00	59.10	383.8	4.0	8.4	8.4	1.20	1.17	4.57	
477.0	5.80	62.30	476.4	7.8	15.3	15.4	1.96	1.94	3.44	
564.0	6.90	64.80	562.9	12.1	23.9	24.0	1.30	1.26	2.87	
651.0	8.00	65.60	649.1	16.8	34.2	34.2	1.27	1.26	0.92	
738.0	9.60	69.00	735.1	21.9	46.5	46.6	1.93	1.84	3.91	
815.0	10.50	74.20	810.9	26.1	59.2	59.3	1.66	1.17	6.75	
930.0	10.20	81.60	924.1	30.5	79.4	79.5	1.18	-0.26	6.43	
1,017.0	11.00	87.80	1,009.6	31.9	95.3	95.4	1.60	0.92	7.13	
1,104.0	13.60	90.80	1,094.6	32.1	113.8	113.9	3.08	2.99	3.45	

Company:	EnCana Oil & Gas Weld County CO	Local Co-ordinate Reference:	Well Ray Nelson 44-32
Project:	SEC.32-T2N-R68W	TVD Reference:	WELL @ 4993.0ft (Original Well Elev)
Site:	Ray Nelson/Brown Pad Sec.32-T2N-R68W	MD Reference:	WELL @ 4993.0ft (Original Well Elev)
Well:	Ray Nelson 44-32	North Reference:	True
Wellbore:	Wellbore #1	Survey Calculation Method:	Minimum Curvature
Design:	Wellbore #1	Database:	Compass

Survey										
Measured Depth (ft)	Inclination (°)	Azimuth (°)	Vertical Depth (ft)	+N-/S (ft)	+E/-W (ft)	Vertical Section (ft)	Dogleg Rate (°/100ft)	Build Rate (°/100ft)	Turn Rate (°/100ft)	
1,191.0	15.00	89.40	1,178.9	32.1	135.3	135.4	1.66	1.61	-1.61	
1,279.0	16.20	89.50	1,263.6	32.3	159.0	159.1	1.36	1.36	0.11	
1,366.0	16.40	89.80	1,347.2	32.4	183.4	183.5	0.25	0.23	0.34	
1,453.0	16.90	92.50	1,430.5	31.9	208.3	208.4	1.06	0.57	3.10	
1,541.0	16.00	93.90	1,514.9	30.5	233.2	233.3	1.12	-1.02	1.59	
1,628.0	16.00	89.50	1,598.5	29.8	257.1	257.2	1.39	0.00	-5.06	
1,716.0	16.50	89.50	1,683.0	30.0	281.8	281.9	0.57	0.57	0.00	
1,803.0	16.90	89.30	1,766.3	30.3	306.8	306.9	0.46	0.46	-0.23	
1,890.0	16.90	93.50	1,849.6	29.7	332.0	332.1	1.40	0.00	4.83	
1,978.0	16.40	94.90	1,933.9	27.9	357.2	357.3	0.73	-0.57	1.59	
2,065.0	16.00	93.10	2,017.5	26.2	381.4	381.5	0.74	-0.46	-2.07	
2,152.0	15.90	94.30	2,101.1	24.6	405.2	405.3	0.40	-0.11	1.38	
2,239.0	16.50	97.00	2,184.6	22.2	429.4	429.5	1.11	0.69	3.10	
2,327.0	15.40	94.70	2,269.3	19.7	453.4	453.5	1.44	-1.25	-2.61	
2,414.0	15.40	95.20	2,353.1	17.7	476.4	476.5	0.15	0.00	0.57	
2,501.0	15.60	96.60	2,437.0	15.3	499.6	499.6	0.49	0.23	1.61	
2,588.0	14.70	93.90	2,520.9	13.3	522.2	522.2	1.31	-1.03	-3.10	
2,675.0	14.80	97.10	2,605.1	11.1	544.2	544.3	0.94	0.11	3.68	
2,762.0	14.20	96.00	2,689.3	8.6	565.9	565.9	0.76	-0.69	-1.26	
2,850.0	13.00	95.10	2,774.8	6.6	586.5	586.5	1.38	-1.36	-1.02	
2,937.0	12.70	98.30	2,859.7	4.4	605.7	605.7	0.89	-0.34	3.68	
3,024.0	12.70	94.40	2,944.5	2.3	624.7	624.7	0.99	0.00	-4.48	
3,112.0	14.30	91.40	3,030.1	1.3	645.2	645.2	1.98	1.82	-3.41	
3,199.0	14.20	89.60	3,114.4	1.1	666.6	666.6	0.52	-0.11	-2.07	
3,286.0	14.50	91.40	3,198.7	0.9	688.2	688.2	0.62	0.34	2.07	
3,373.0	14.50	91.80	3,282.9	0.3	709.9	709.9	0.12	0.00	0.46	
3,461.0	14.40	98.30	3,368.2	-1.7	731.8	731.8	1.85	-0.11	7.39	
3,548.0	14.20	97.20	3,452.5	-4.6	753.1	753.1	0.39	-0.23	-1.26	
3,635.0	14.30	99.10	3,536.8	-7.6	774.3	774.2	0.55	0.11	2.18	
3,723.0	13.60	92.00	3,622.2	-9.7	795.3	795.3	2.10	-0.80	-8.07	
3,810.0	13.90	90.80	3,706.7	-10.2	816.0	816.0	0.48	0.34	-1.38	
3,897.0	13.30	88.80	3,791.3	-10.1	836.5	836.4	0.88	-0.69	-2.30	
3,984.0	13.10	95.70	3,876.0	-10.9	856.3	856.2	1.82	-0.23	7.93	
4,072.0	13.60	97.70	3,961.6	-13.3	876.5	876.4	0.77	0.57	2.27	
4,159.0	14.70	95.00	4,046.0	-15.6	897.6	897.5	1.47	1.26	-3.10	
4,246.0	15.80	95.40	4,129.9	-17.7	920.4	920.3	1.27	1.26	0.46	
4,334.0	14.60	94.30	4,214.8	-19.6	943.4	943.3	1.40	-1.36	-1.25	
4,421.0	12.50	92.20	4,299.4	-20.8	963.7	963.6	2.48	-2.41	-2.41	
4,508.0	11.50	90.00	4,384.5	-21.2	981.8	981.7	1.26	-1.15	-2.53	
4,596.0	11.10	90.70	4,470.8	-21.3	999.0	999.0	0.48	-0.45	0.80	
4,683.0	10.60	88.80	4,556.2	-21.2	1,015.4	1,015.3	0.71	-0.57	-2.18	
4,770.0	9.80	84.40	4,641.9	-20.3	1,030.8	1,030.7	1.28	-0.92	-5.06	
4,857.0	8.70	84.60	4,727.7	-19.0	1,044.7	1,044.6	1.26	-1.26	0.23	
4,945.0	7.40	83.40	4,814.9	-17.7	1,057.0	1,056.9	1.49	-1.48	-1.36	
5,032.0	6.50	82.30	4,901.2	-16.4	1,067.4	1,067.3	1.05	-1.03	-1.26	
5,119.0	4.60	79.80	4,987.8	-15.1	1,075.7	1,075.7	2.20	-2.18	-2.87	
5,294.0	2.60	77.80	5,162.4	-13.0	1,086.5	1,086.5	1.14	-1.14	-1.14	
5,468.0	1.40	80.70	5,336.3	-11.9	1,092.5	1,092.4	0.69	-0.69	1.67	
5,631.5	1.12	66.27	5,499.8	-10.9	1,095.9	1,095.8	0.26	-0.17	-8.83	
PERMIT TARGET BHL 810'FSL, 600'FEL										
5,642.0	1.10	65.10	5,510.3	-10.8	1,096.1	1,096.0	0.26	-0.14	-11.12	
5,817.0	0.80	52.90	5,685.3	-9.4	1,098.6	1,098.5	0.21	-0.17	-6.97	
5,931.6	0.40	12.67	5,799.9	-8.5	1,099.3	1,099.3	0.49	-0.35	-35.10	
DRILL TARGET BHL 795'FSL, 600'FEL										

Company:	EnCana Oil & Gas Weld County CO	Local Co-ordinate Reference:	Well Ray Nelson 44-32
Project:	SEC.32-T2N-R68W	TVD Reference:	WELL @ 4993.0ft (Original Well Elev)
Site:	Ray Nelson/Brown Pad Sec.32-T2N-R68W	MD Reference:	WELL @ 4993.0ft (Original Well Elev)
Well:	Ray Nelson 44-32	North Reference:	True
Wellbore:	Wellbore #1	Survey Calculation Method:	Minimum Curvature
Design:	Wellbore #1	Database:	Compass

Survey										
Measured Depth (ft)	Inclination (°)	Azimuth (°)	Vertical Depth (ft)	+N/-S (ft)	+E/-W (ft)	Vertical Section (ft)	Dogleg Rate (°/100ft)	Build Rate (°/100ft)	Turn Rate (°/100ft)	
5,992.0	0.40	329.80	5,860.3	-8.1	1,099.2	1,099.2	0.49	0.00	-71.01	
6,166.0	0.60	8.70	6,034.3	-6.7	1,099.1	1,099.0	0.22	0.11	22.36	
6,341.0	0.80	1.40	6,209.2	-4.6	1,099.2	1,099.2	0.12	0.11	-4.17	
6,516.0	1.10	344.50	6,384.2	-1.7	1,098.8	1,098.8	0.23	0.17	-9.66	
6,691.0	1.10	357.40	6,559.2	1.6	1,098.3	1,098.3	0.14	0.00	7.37	
6,865.0	1.10	351.10	6,733.2	4.9	1,098.0	1,098.0	0.07	0.00	-3.62	
6,953.0	0.40	329.40	6,821.1	6.0	1,097.7	1,097.7	0.84	-0.80	-24.66	
7,040.0	0.70	340.90	6,908.1	6.8	1,097.3	1,097.4	0.37	0.34	13.22	
7,127.0	0.60	359.80	6,995.1	7.7	1,097.2	1,097.2	0.27	-0.11	21.72	
7,215.0	1.00	356.80	7,083.1	9.0	1,097.1	1,097.2	0.46	0.45	-3.41	
7,302.0	1.10	345.70	7,170.1	10.5	1,096.9	1,096.9	0.26	0.11	-12.76	
7,389.0	1.10	336.90	7,257.1	12.1	1,096.3	1,096.4	0.19	0.00	-10.11	
7,448.0	1.03	338.37	7,316.1	13.1	1,095.9	1,096.0	0.12	-0.12	2.49	
DRILLING BOX 400' X 400' 670'FSL, 678'FEL										
7,564.0	0.90	341.90	7,432.1	14.9	1,095.3	1,095.3	0.12	-0.11	3.04	
7,739.0	0.80	0.10	7,607.1	17.5	1,094.8	1,094.9	0.16	-0.06	10.40	
7,913.0	1.00	354.60	7,781.0	20.2	1,094.7	1,094.8	0.13	0.11	-3.16	
8,088.0	0.90	335.40	7,956.0	23.0	1,094.0	1,094.1	0.19	-0.06	-10.97	
8,263.0	1.10	343.40	8,131.0	25.8	1,092.9	1,093.0	0.14	0.11	4.57	
8,308.0	0.90	338.70	8,176.0	26.6	1,092.7	1,092.8	0.48	-0.44	-10.44	
8,360.0	0.90	338.70	8,228.0	27.3	1,092.4	1,092.5	0.00	0.00	0.00	
projection to TD										

Survey Annotations				
Measured Depth (ft)	Vertical Depth (ft)	Local Coordinates		Comment
		+N/-S (ft)	+E/-W (ft)	
8,360.0	8,228.0	27.3	1,092.4	projection to TD

Checked By: _____	Approved By: _____	Date: _____
-------------------	--------------------	-------------