

THIS IS TO CERTIFY THAT THE ABOVE PLAT WAS PREPARED FROM FIELD NOTES AND ACTUAL SURVEYS MADE BY ME OR UNDER MY SUPERVISION, AND THAT THE SAME ARE TRUE AND CORRECT TO THE BEST OF MY KNOWLEDGE AND BELIEF.

John R. Maugh
 PROFESSIONAL LAND SURVEYOR
 REGISTRATION NO. 38230
 STATE OF COLORADO

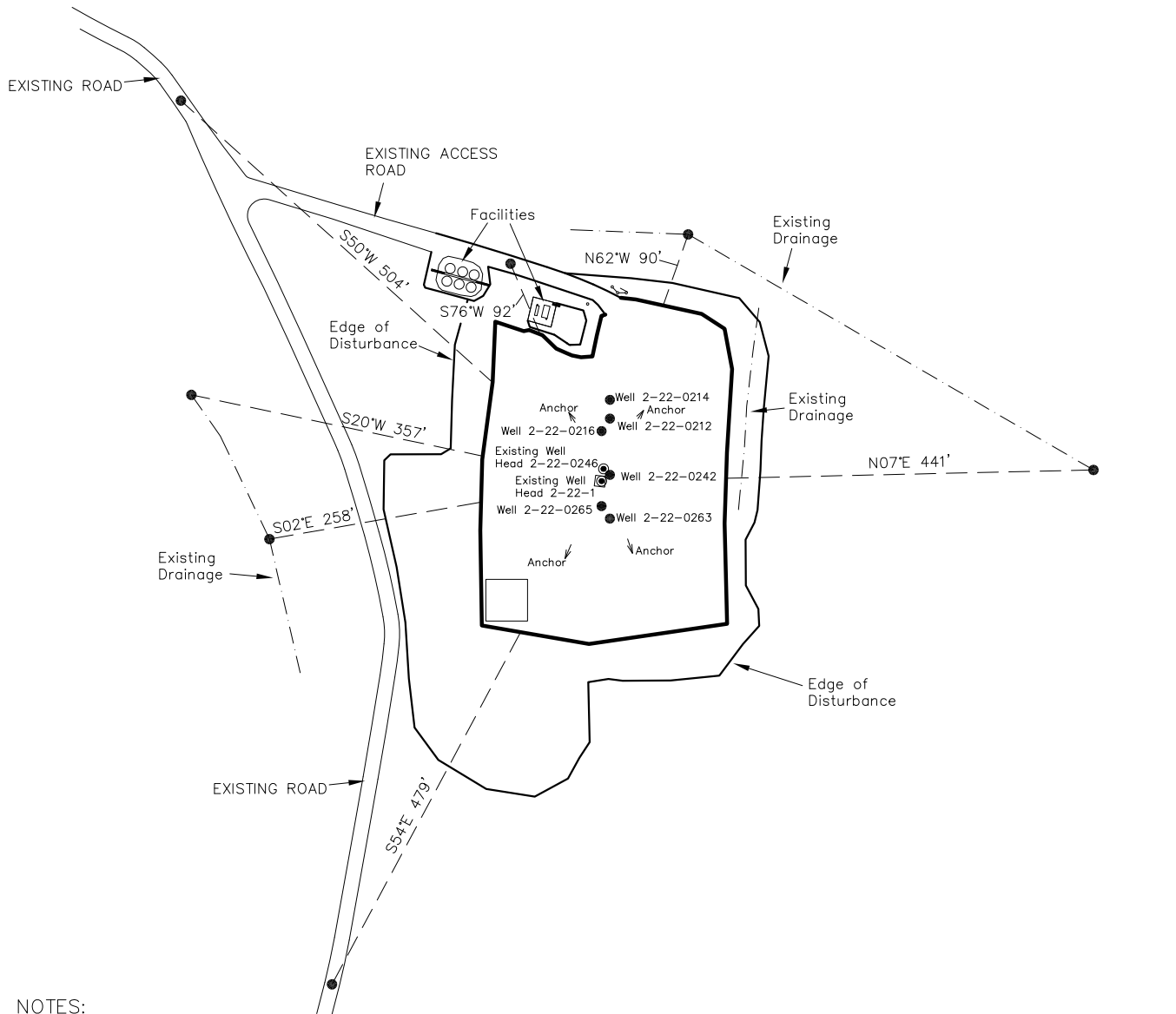
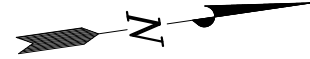
TIMBERLINE (435) 789-1365
ENGINEERING & LAND SURVEYING, INC.
 209 NORTH 300 WEST - VERNAL, UTAH 84078

DATE SURVEYED: 01-02-08	SURVEYED BY: M.S.B.	SHEET 2a OF 11
DATE DRAWN: 03-27-08	DRAWN BY: M.W.W.	
SCALE: 1" = 1000'	Date Last Revised: 08-27-10 M.W.W.	

BOPCO, L.P.

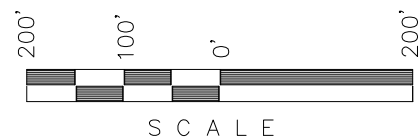
ADDENDUM TO LEGAL PLAT

YCF XOM 2-22-0214, YCF XOM 2-22-0212,
YCF XOM 2-22-0216, YCF XOM 2-22-0242,
YCF XOM 2-22-0263, YCF XOM 2-22-0265,
YCF XOM 2-22-0246 & YCF XOM 2-22-1



NOTES:

1. Surface use of location is grazing.
Vegetation consists mainly of cedar, sagebrush, and native grasses.
2. There are no other Natural Features or Existing Improvements Within 400' of the Well Pad.



Section 2, T1S, R98W, 6th P.M.

Qtr/Qtr Location: LOT 6

Date Surveyed:
01-02-08

Date Drawn:
05-08-08

Date Last Revision:
08-27-10 M.W.W.

Surveyed By: B.J.S.

Drawn By: M.W.W.

Scale: 1" = 200'

Timberline (435) 789-1365
Engineering & Land Surveying, Inc.
209 NORTH 300 WEST VERNAL, UTAH 84078

SHEET
2b
OF 11

BOPCO, L.P.

WELL PAD INTERFERENCE PLAT

YCF XOM 2-22-0214, YCF XOM 2-22-0212,
YCF XOM 2-22-0216, YCF XOM 2-22-0242,
YCF XOM 2-22-0263, YCF XOM 2-22-0265,
YCF XOM 2-22-0246 & YCF XOM 2-22-1



SURFACE POSITION FOOTAGES:

YCF 2-22-0214
1607' FNL & 1998' FWL

YCF 2-22-0216
1623' FNL & 2034' FWL

YCF 2-22-0212
1611' FNL & 2021' FWL

YCF 2-22-0242
1621' FNL & 2087' FWL

YCF 2-22-0263
1629' FNL & 2139' FWL

YCF 2-22-0265
1636' FNL & 2123' FWL

BASIS OF ELEVATION IS A SPOT
ELEVATION AT A ROAD INTERSECTION
LOCATED IN THE SW 1/4 NE 1/4 OF
SECTION 32, T1N, R98W, 6th P.M.
THE ELEVATION OF THIS ROAD
INTERSECTION IS MARKED ON THE
BARCUS CREEK 7.5 MIN. QUADRANGLE
AS BEING 6727'.

BASIS OF BEARINGS IS THE WEST
LINE OF THE NW 1/4 OF SECTION
2, T1S, R98W, 6th P.M. WHICH IS
TAKEN FROM GLOBAL POSITIONING
SATELLITE OBSERVATIONS TO BEAR
N00°06'04"W.

BOTTOM HOLE FOOTAGES

YCF 2-22-0214
1811' FNL & 610' FWL

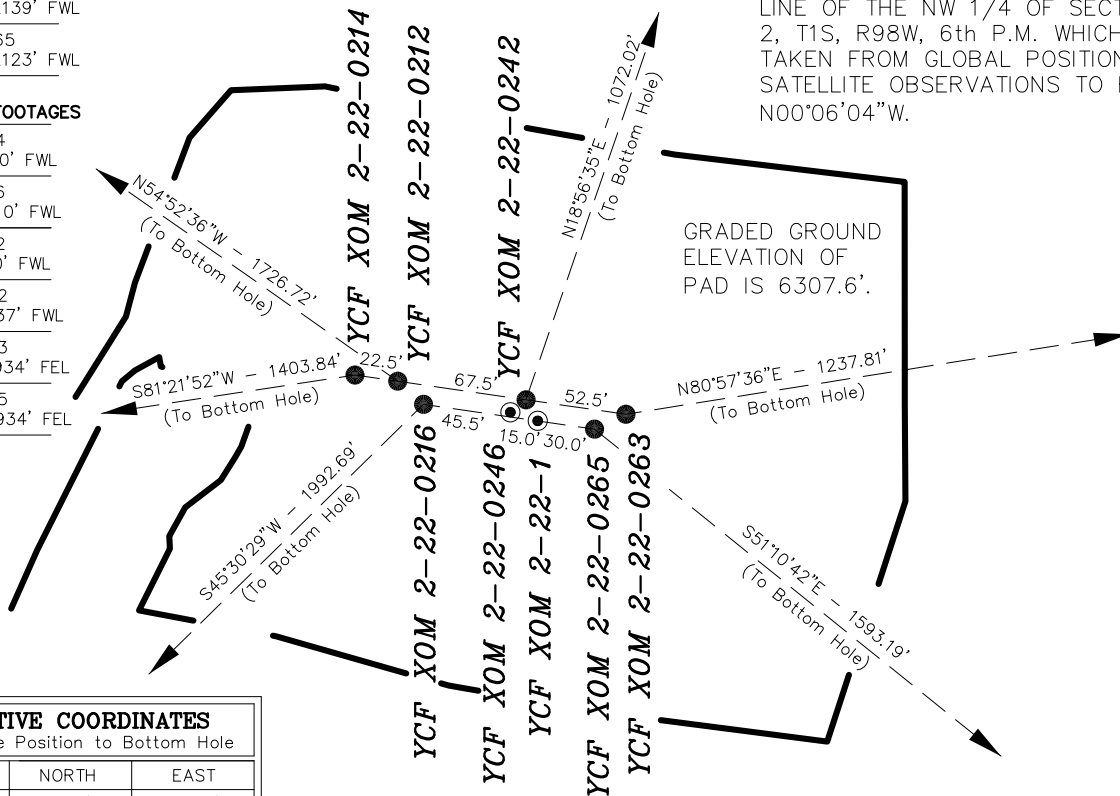
YCF 2-22-0216
3012' FNL & 610' FWL

YCF 2-22-0212
610' FNL & 610' FWL

YCF 2-22-0242
610' FNL & 2437' FWL

YCF 2-22-0263
1445' FNL & 1934' FEL

YCF 2-22-0265
2646' FNL & 1934' FEL



GRADED GROUND
ELEVATION OF
PAD IS 6307.6'.

RELATIVE COORDINATES

From Surface Position to Bottom Hole

WELL	NORTH	EAST
2-22-0214	-211'	-1,388'
2-22-0216	-1,396'	-1,421'
2-22-0212	993'	-1,412'
2-22-0242	1,014'	348'
2-22-0263	194'	1,222'
2-22-0265	-999'	1,241'

LATITUDE & LONGITUDE

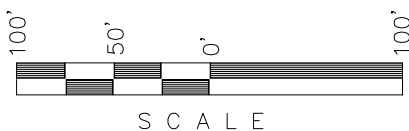
Surface Position - (NAD 83) Autonomous

WELL	N. LATITUDE	W. LONGITUDE
2-22-0214	40.00121°N 40°00'04.34"N	108.36084°W 108°21'39.03"W
2-22-0216	40.00116°N 40°00'04.19"N	108.36071°W 108°21'38.57"W
2-22-0212	40.00120°N 40°00'04.31"N	108.36076°W 108°21'38.75"W
2-22-0242	40.00117°N 40°00'04.22"N	108.36052°W 108°21'37.89"W
2-22-0263	40.00115°N 40°00'04.14"N	108.36034°W 108°21'37.22"W
2-22-0265	40.00113°N 40°00'04.06"N	108.36040°W 108°21'37.43"W

LATITUDE & LONGITUDE

Bottom Hole - (NAD 83) Autonomous

WELL	N. LATITUDE	W. LONGITUDE
2-22-0214	40.00063°N 40°00'02.27"N	108.36580°W 108°21'56.86"W
2-22-0216	39.99733°N 39°59'50.40"N	108.36579°W 108°21'56.84"W
2-22-0212	40.00393°N 40°00'14.13"N	108.36580°W 108°21'56.88"W
2-22-0242	40.00395°N 40°00'14.23"N	108.35928°W 108°21'33.41"W
2-22-0263	40.00168°N 40°00'06.06"N	108.35598°W 108°21'21.52"W
2-22-0265	39.99839°N 39°59'54.19"N	108.35597°W 108°21'21.49"W



Section 2, T1S, R98W, 6th P.M.

Qtr/Qtr Location: LOT 6

Date Surveyed:
03-28-08

Date Drawn:
05-08-08

Date Last Revision:
08-27-10 M.W.W.

Timberline

(435) 789-1365

SHEET
3

Surveyed By: M.S.B.

Drawn By: M.W.W.

Scale: 1" = 100'

Engineering & Land Surveying, Inc.

209 NORTH 300 WEST VERNAL, UTAH 84078

OF 11