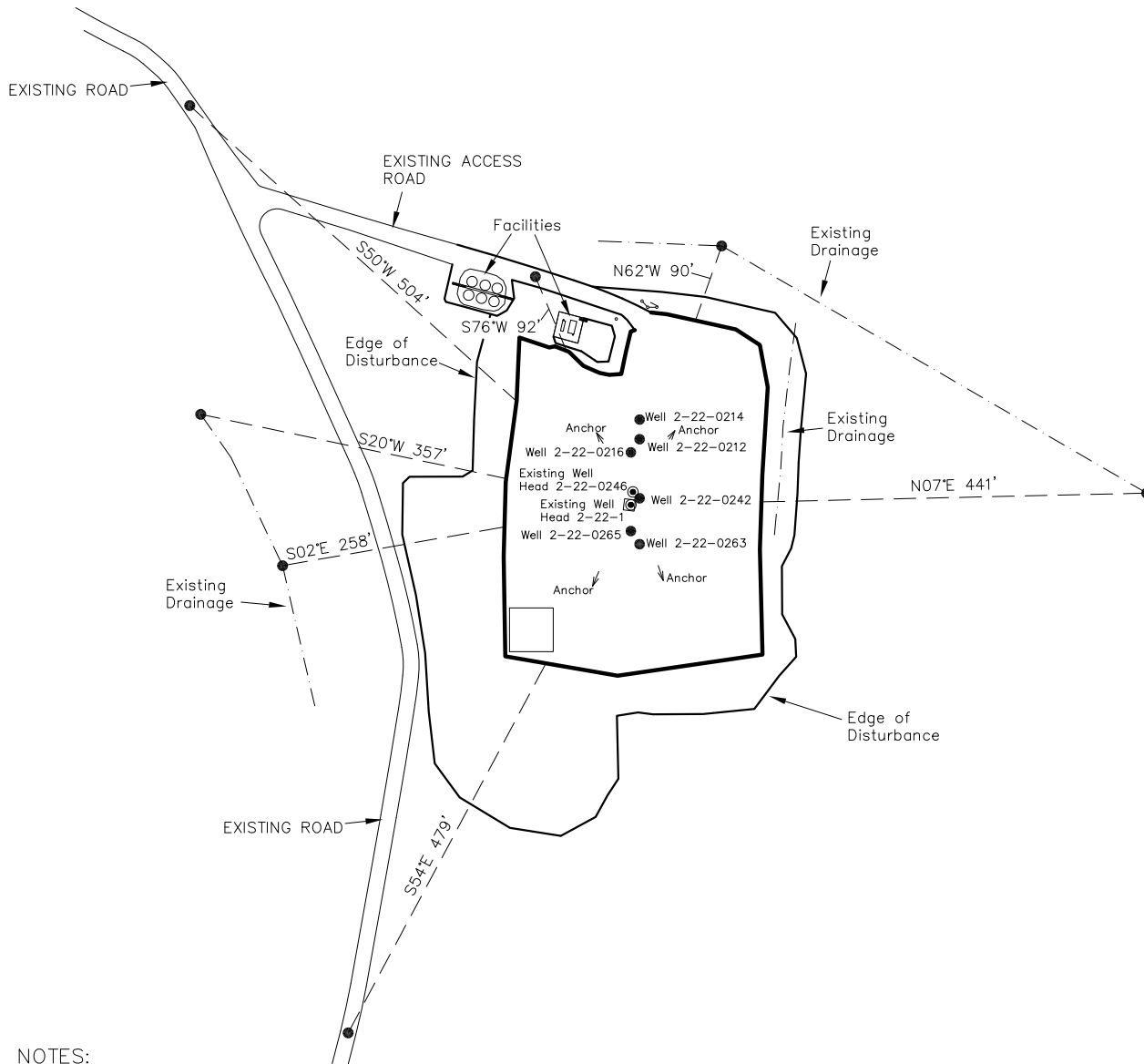
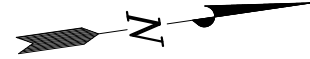


# BOPCO, L.P.

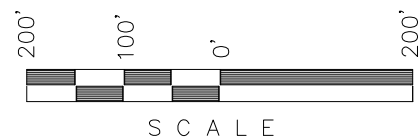
## ADDENDUM TO LEGAL PLAT

YCF XOM 2-22-0214, YCF XOM 2-22-0212,  
YCF XOM 2-22-0216, YCF XOM 2-22-0242,  
YCF XOM 2-22-0263, YCF XOM 2-22-0265,  
YCF XOM 2-22-0246 & YCF XOM 2-22-1



### NOTES:

1. Surface use of location is grazing.  
Vegetation consists mainly of cedar, sagebrush, and native grasses.
2. There are no other Natural Features or Existing Improvements Within 400' of the Well Pad.



Section 2, T1S, R98W, 6th P.M.

Qtr/Qtr Location: LOT 6

Date Surveyed:  
01-02-08

Date Drawn:  
05-08-08

Date Last Revision:  
08-27-10 M.W.W.

Surveyed By: B.J.S.

Drawn By: M.W.W.

Scale: 1" = 200'

**Timberline** (435) 789-1365  
Engineering & Land Surveying, Inc.  
209 NORTH 300 WEST VERNAL, UTAH 84078

SHEET  
**2b**  
OF 11

# BOPCO, L.P.

## WELL PAD INTERFERENCE PLAT

YCF XOM 2-22-0214, YCF XOM 2-22-0212,  
YCF XOM 2-22-0216, YCF XOM 2-22-0242,  
YCF XOM 2-22-0263, YCF XOM 2-22-0265,  
YCF XOM 2-22-0246 & YCF XOM 2-22-1



### SURFACE POSITION FOOTAGES:

YCF 2-22-0214  
1607' FNL & 1998' FWL

YCF 2-22-0216  
1623' FNL & 2034' FWL

YCF 2-22-0212  
1611' FNL & 2021' FWL

YCF 2-22-0242  
1621' FNL & 2087' FWL

YCF 2-22-0263  
1629' FNL & 2139' FWL

YCF 2-22-0265  
1636' FNL & 2123' FWL

BASIS OF ELEVATION IS A SPOT  
ELEVATION AT A ROAD INTERSECTION  
LOCATED IN THE SW 1/4 NE 1/4 OF  
SECTION 32, T1N, R98W, 6th P.M.  
THE ELEVATION OF THIS ROAD  
INTERSECTION IS MARKED ON THE  
BARCUS CREEK 7.5 MIN. QUADRANGLE  
AS BEING 6727'.

BASIS OF BEARINGS IS THE WEST  
LINE OF THE NW 1/4 OF SECTION  
2, T1S, R98W, 6th P.M. WHICH IS  
TAKEN FROM GLOBAL POSITIONING  
SATELLITE OBSERVATIONS TO BEAR  
N00°06'04"W.

### BOTTOM HOLE FOOTAGES

YCF 2-22-0214  
1811' FNL & 610' FWL

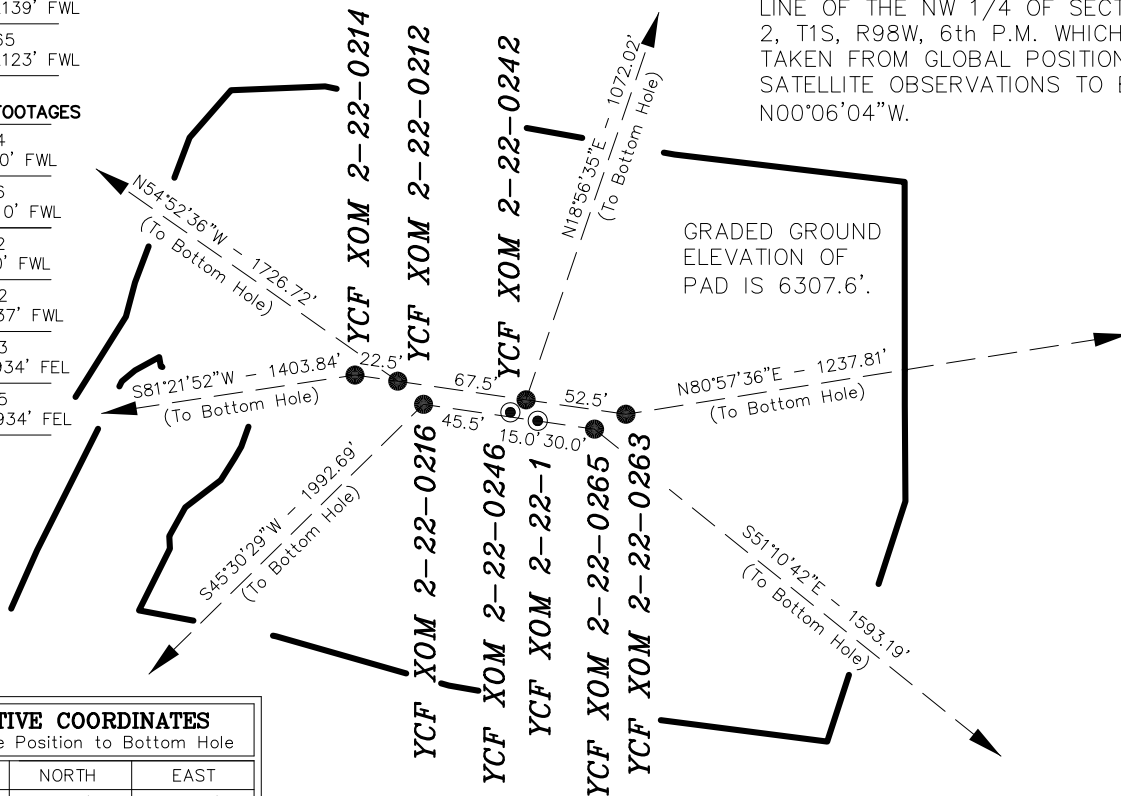
YCF 2-22-0216  
3012' FNL & 610' FWL

YCF 2-22-0212  
610' FNL & 610' FWL

YCF 2-22-0242  
610' FNL & 2437' FWL

YCF 2-22-0263  
1445' FNL & 1934' FEL

YCF 2-22-0265  
2646' FNL & 1934' FEL



GRADED GROUND  
ELEVATION OF  
PAD IS 6307.6'.

### RELATIVE COORDINATES

From Surface Position to Bottom Hole

WELL	NORTH	EAST
2-22-0214	-211'	-1,388'
2-22-0216	-1,396'	-1,421'
2-22-0212	993'	-1,412'
2-22-0242	1,014'	348'
2-22-0263	194'	1,222'
2-22-0265	-999'	1,241'

### LATITUDE & LONGITUDE

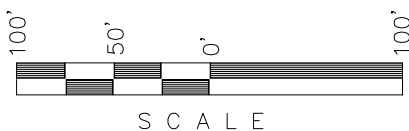
Surface Position - (NAD 83) Autonomous

WELL	N. LATITUDE	W. LONGITUDE
2-22-0214	40.00121°N 40°00'04.34"N	108.36084°W 108°21'39.03"W
2-22-0216	40.00116°N 40°00'04.19"N	108.36071°W 108°21'38.57"W
2-22-0212	40.00120°N 40°00'04.31"N	108.36076°W 108°21'38.75"W
2-22-0242	40.00117°N 40°00'04.22"N	108.36052°W 108°21'37.89"W
2-22-0263	40.00115°N 40°00'04.14"N	108.36034°W 108°21'37.22"W
2-22-0265	40.00113°N 40°00'04.06"N	108.36040°W 108°21'37.43"W

### LATITUDE & LONGITUDE

Bottom Hole - (NAD 83) Autonomous

WELL	N. LATITUDE	W. LONGITUDE
2-22-0214	40.00063°N 40°00'02.27"N	108.36580°W 108°21'56.86"W
2-22-0216	39.99733°N 39°59'50.40"N	108.36579°W 108°21'56.84"W
2-22-0212	40.00393°N 40°00'14.13"N	108.36580°W 108°21'56.88"W
2-22-0242	40.00395°N 40°00'14.23"N	108.35928°W 108°21'33.41"W
2-22-0263	40.00168°N 40°00'06.06"N	108.35598°W 108°21'21.52"W
2-22-0265	39.99839°N 39°59'54.19"N	108.35597°W 108°21'21.49"W



Section 2, T1S, R98W, 6th P.M.

Qtr/Qtr Location: LOT 6

Date Surveyed:  
03-28-08

Date Drawn:  
05-08-08

Date Last Revision:  
08-27-10 M.W.W.

**Timberline**

(435) 789-1365

SHEET  
3

Surveyed By: M.S.B.

Drawn By: M.W.W.

Scale: 1" = 100'

Engineering & Land Surveying, Inc.

209 NORTH 300 WEST VERNAL, UTAH 84078

OF 11