

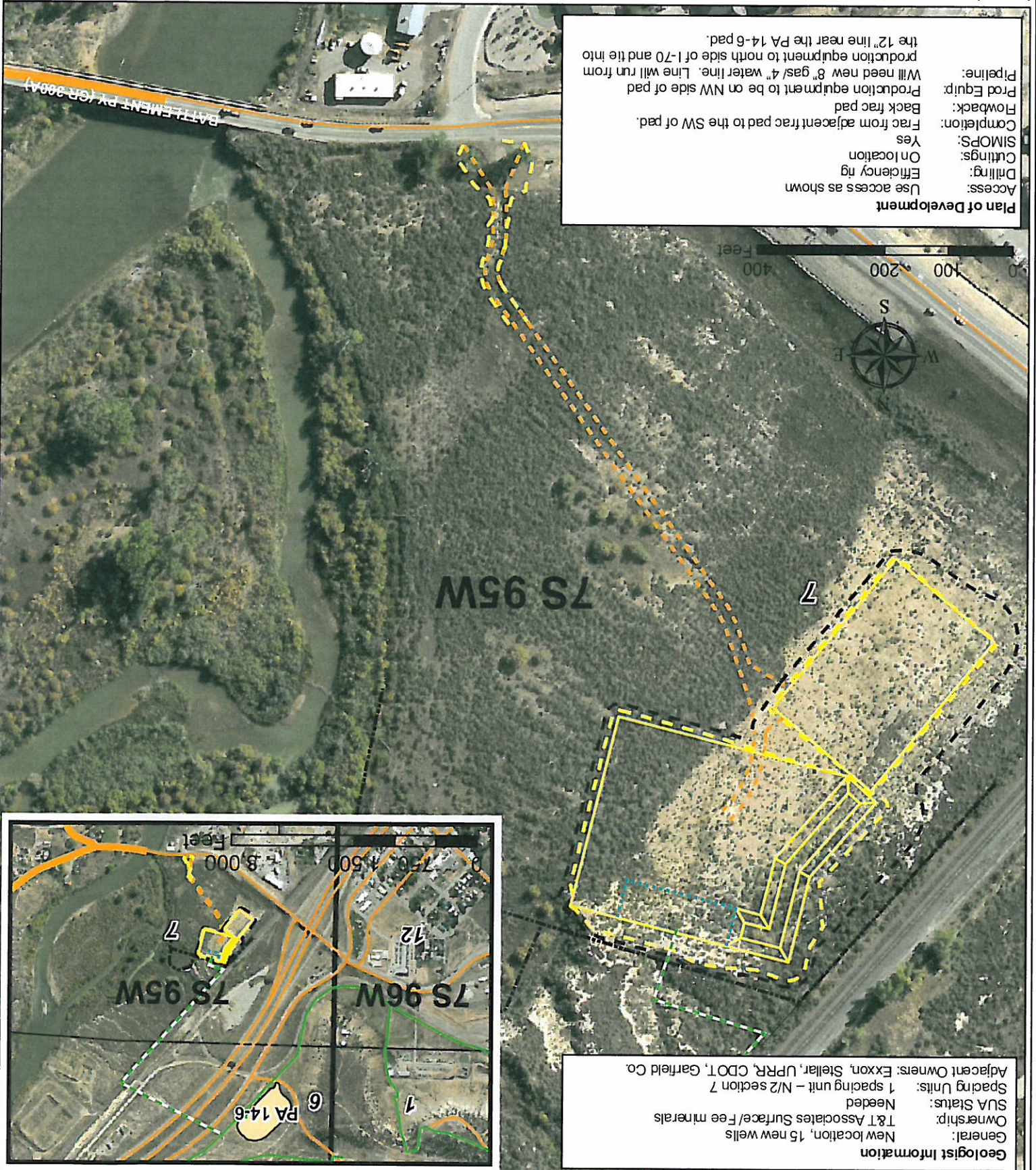
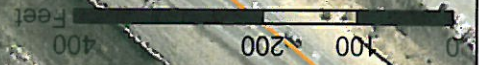
Williams Production RMT  
PA 21-7 Plan of Development  
Date Prepared: April 12, 2010



- Legend**
- Pipeline (Valley, Proposed)
  - Pipeline (Valley, Existing)
  - Proposed Production Equipment Area
  - Proposed Limit of Disturbance
  - Proposed Daylight Line
  - Property Boundary (Surveyed)
  - Proposed Pad or Pit
  - Existing Fence
  - Existing Road
  - Proposed Road
  - Existing Pad

**Plan of Development**

Access: Use access as shown  
Drilling: Efficiency rig  
Cuttings: On location  
SIMOPS: Yes  
Completion: Frac from adjacent frac pad to the SW of pad.  
Flowback: Back frac pad  
Prod Equip: Production equipment to be on NW side of pad  
Pipeline: Will need new 8" gas/ 4" water line. Line will run from production equipment to north side of I-70 and tie into the 12" line near the PA 14-6 pad.



**Geologist Information**

General: New location, 15 new wells  
Ownership: T&T Associates Surface/ Fee minerals  
SUA Status: Needed  
Spacing Units: 1 spacing unit - N/2 section 7  
Adjacent Owners: Exxon, Stellar, UPRR, CDOT, Garfield Co.

