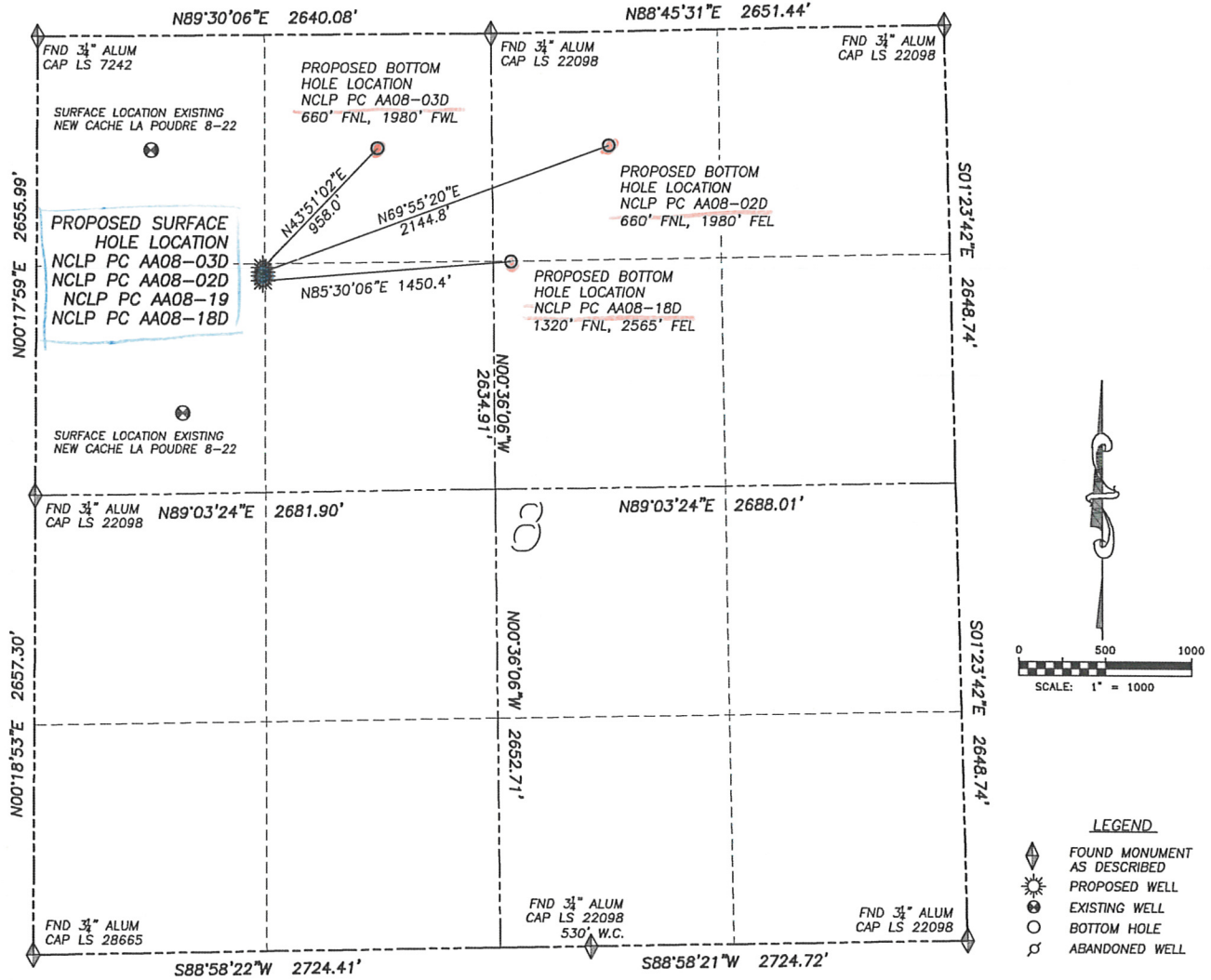


Multi Well Plan

DALEY LAND SURVEYING, INC. PARKER, CO. 80134 303 953 9841

DIRECTIONAL LAYOUT
NCLP PC AA08-03D, NCLP PC AA08-02D
NCLP PC AA08-19 & NCLP PC AA08-18D

SECTION 8, TOWNSHIP 6 NORTH, RANGE 63 WEST OF THE 6TH PRINCIPAL MERIDIAN



NAD 83 LATITUDE AND LONGITUDE
 NCLP PC AA08-03D
SURFACE HOLE:
 LATITUDE: N40.50464'
 LONGITUDE: W104.46553'
 ELEVATION: 4703'
 PDOP 1.2
 1345' FNL, 1320' FWL
BOTTOM HOLE:
 LATITUDE: N40.50654'
 LONGITUDE: W104.46314'
 660' FNL, 1980' FWL
NEAREST EXISTING WELL:
 NEW CACHE LA POUVRE 8-22
SURFACE HOLE:
 LATITUDE: N40.50651'
 LONGITUDE: W104.46787'
 ELEVATION: 4697'
 940' NORTHWEST

NAD 83 LATITUDE AND LONGITUDE
 NCLP PC AA08-02D
SURFACE HOLE:
 LATITUDE: N40.50457'
 LONGITUDE: W104.46553'
 ELEVATION: 4703'
 PDOP 1.7
 1370' FNL, 1320' FWL
BOTTOM HOLE:
 LATITUDE: N40.50659'
 LONGITUDE: W104.45828'
 660' FNL, 1980' FEL
NEAREST EXISTING WELL:
 NEW CACHE LA POUVRE 8-23
SURFACE HOLE:
 LATITUDE: N40.50233'
 LONGITUDE: W104.46721'
 ELEVATION: 4696'
 939' SOUTHWEST

NAD 83 LATITUDE AND LONGITUDE
 NCLP PC AA08-19
SURFACE HOLE:
 LATITUDE: N40.50451'
 LONGITUDE: W104.46553'
 ELEVATION: 4703'
 PDOP 1.7
 1395' FNL, 1320' FWL
NEAREST EXISTING WELL:
 NEW CACHE LA POUVRE 8-23
SURFACE HOLE:
 LATITUDE: N40.50233'
 LONGITUDE: W104.46721'
 ELEVATION: 4696'
 918' SOUTHWEST

NAD 83 LATITUDE AND LONGITUDE
 NCLP PC AA08-18D
SURFACE HOLE:
 LATITUDE: N40.50444'
 LONGITUDE: W104.46553'
 ELEVATION: 4703'
 PDOP 1.6
 1420' FNL, 1320' FWL
BOTTOM HOLE:
 LATITUDE: N40.50475'
 LONGITUDE: W104.46033'
 1320' FNL, 2565' FEL
NEAREST EXISTING WELL:
 NEW CACHE LA POUVRE 8-23
SURFACE HOLE:
 LATITUDE: N40.50233'
 LONGITUDE: W104.46721'
 ELEVATION: 4696'
 896' SOUTHWEST