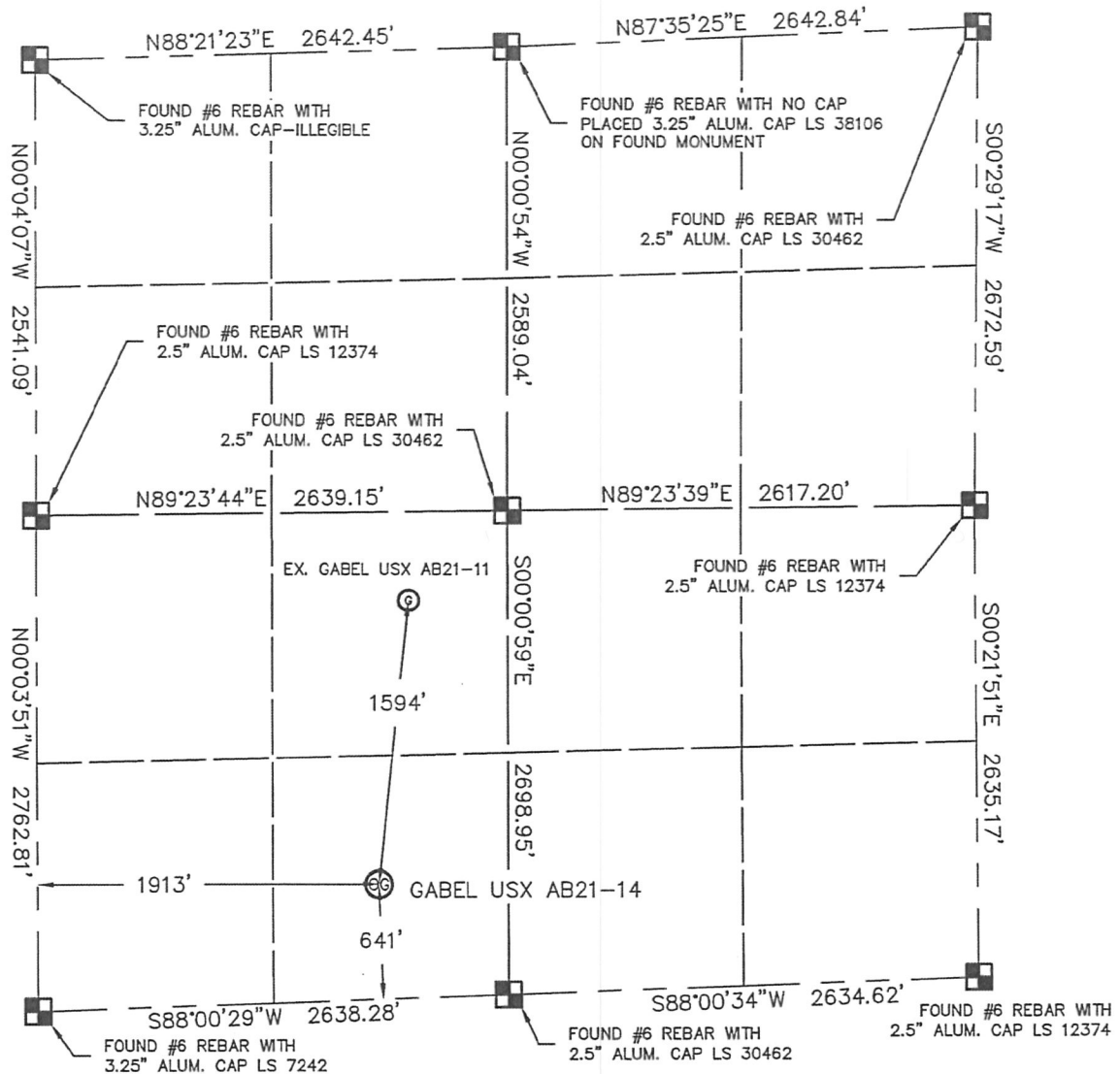


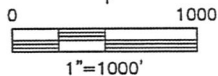
**WELL LOCATION CERTIFICATE****GABEL USX AB21-14**

THIS MAP DOES NOT REPRESENT A BOUNDARY SURVEY

SECTION: 21  
TOWNSHIP: 7N  
RANGE: 64W

In accordance with a request from ERIK VAN DECAR with NOBLE ENERGY INC. King Surveyors Inc. has determined the surface location of the GABEL USX AB21-14 to be 641' from the SOUTH line and 1913' from the WEST line, as measured at right angles, from the section lines of Section 21, Township 7 North, Range 64 West of the Sixth Principal Meridian, County of Weld, State of Colorado.

I hereby state that this Well Location Certificate was prepared by me, or under my direct supervision, that the fieldwork was completed on 9-28-2010, for and on behalf of NOBLE ENERGY INC. That this is not a Land Survey Plat or an Improvement Survey Plat, and that it is not to be relied upon for establishment of fence, building, or other future improvement lines.

**NOTE:**

- 1) Bearings shown are Grid Bearings of the Colorado State Plane Coordinate System, North Zone, North American Datum 1983/2007. The lineal dimensions as contained herein are based upon the "U.S. Survey Foot."
- 2) Ground elevations are based on an observed GPS elevation (NAVD 1988 DATUM).
- 3) NEAREST EXISTING WELL: GABEL USX AB21-11, 1594' NORTH
- 4) IMPROVEMENTS: See LOCATION DRAWING exhibit for all visible improvements within 400' of well head.
- 5) SURFACE USE: GRASS & ALFALFA
- 6) OPERATOR: JEFF POZVEK

**SURFACE LOCATION**

LATITUDE: 40.55297°N  
LONGITUDE: 104.55721°W  
PDOP: 1.9  
ELEV: 4880'  
1/4, 1/4: SE1/4 SW1/4  
NEAREST PROPERTY LINE: 641' SOUTH

**NOTE**

According to Colorado law, you must commence any legal action based upon any defect in this W.L.C. within three years after you discover such defect. In no event, may any action based upon any defect in this survey be commenced more than ten years after the date of the certificate shown hereon. (13-80-105 C.R.S.)

**LEGEND**

- = ALIQUOT MONUMENT AS DESCRIBED  
○ = CALCULATED POSITION

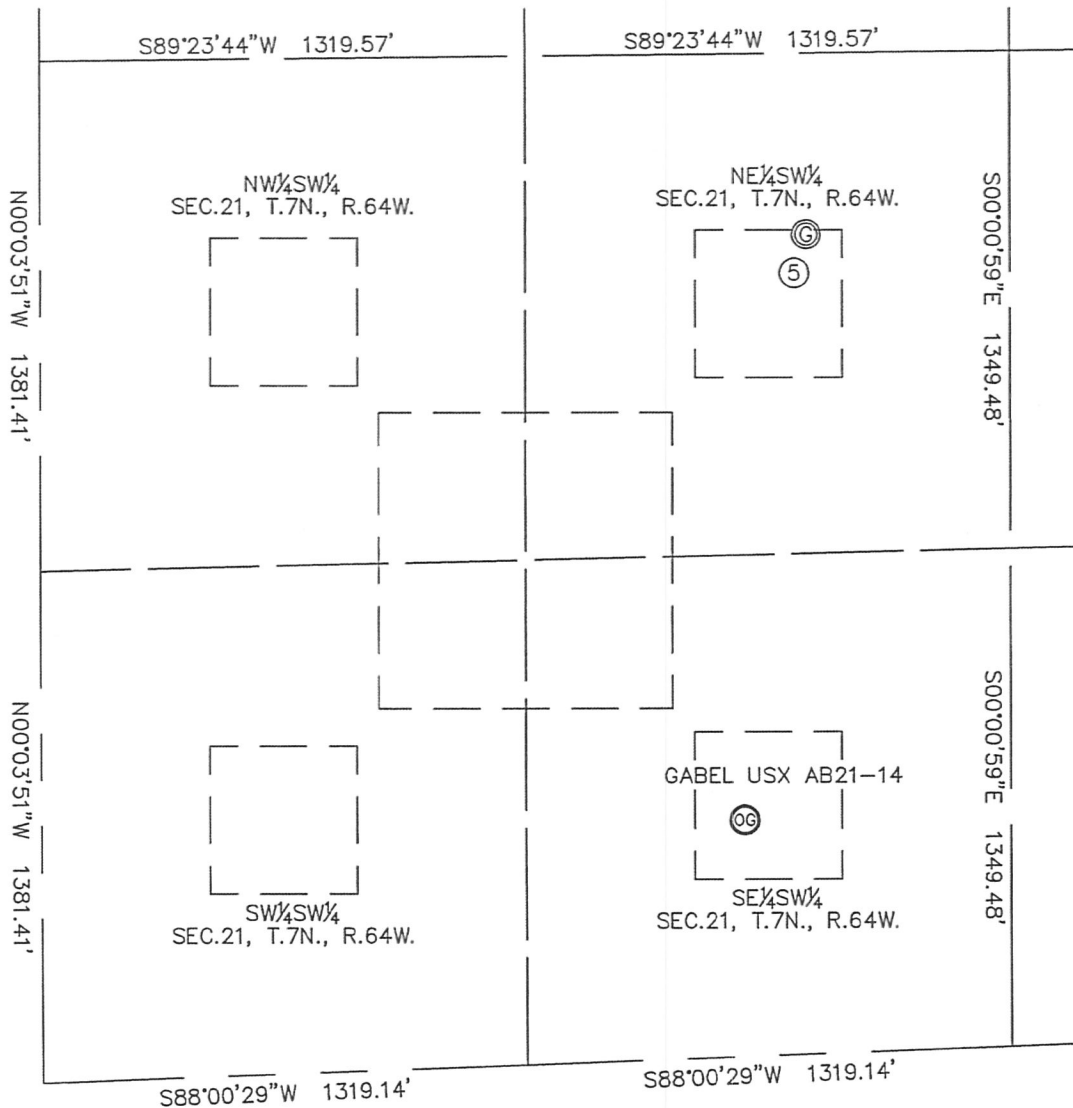
10/5/2010  
Michael Chad Dilka On Behalf Of King Surveyors, Inc.  
Colorado Licensed Professional Land Surveyor #38106  
PROJECT#: 2008517

KING SURVEYORS, INC. 650 E. GARDEN DR. WINDSOR, CO 80550

# SITE SKETCH

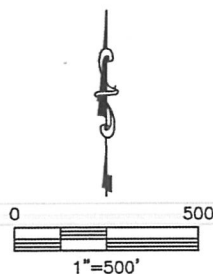
## GABEL USX AB21-14

SECTION: 21  
TOWNSHIP: 7N  
RANGE: 64W



⑤

GABEL USX AB21-11  
NE1/4 SW1/4  
2219' FSL  
2084' FWL  
LAT-40.55731°N  
LONG-104.55654°W  
PDOP: 1.1  
ELEV: 4908'



PROJECT#: 2008517