

T11N, R63W, 6th P.M.

EOG RESOURCES, INC.

1921 Brass Cap
Lat: 40.944161°
Long: 104.409628°

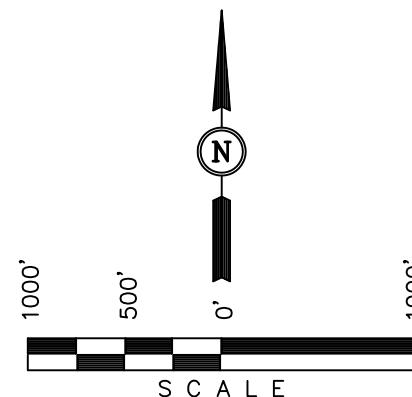
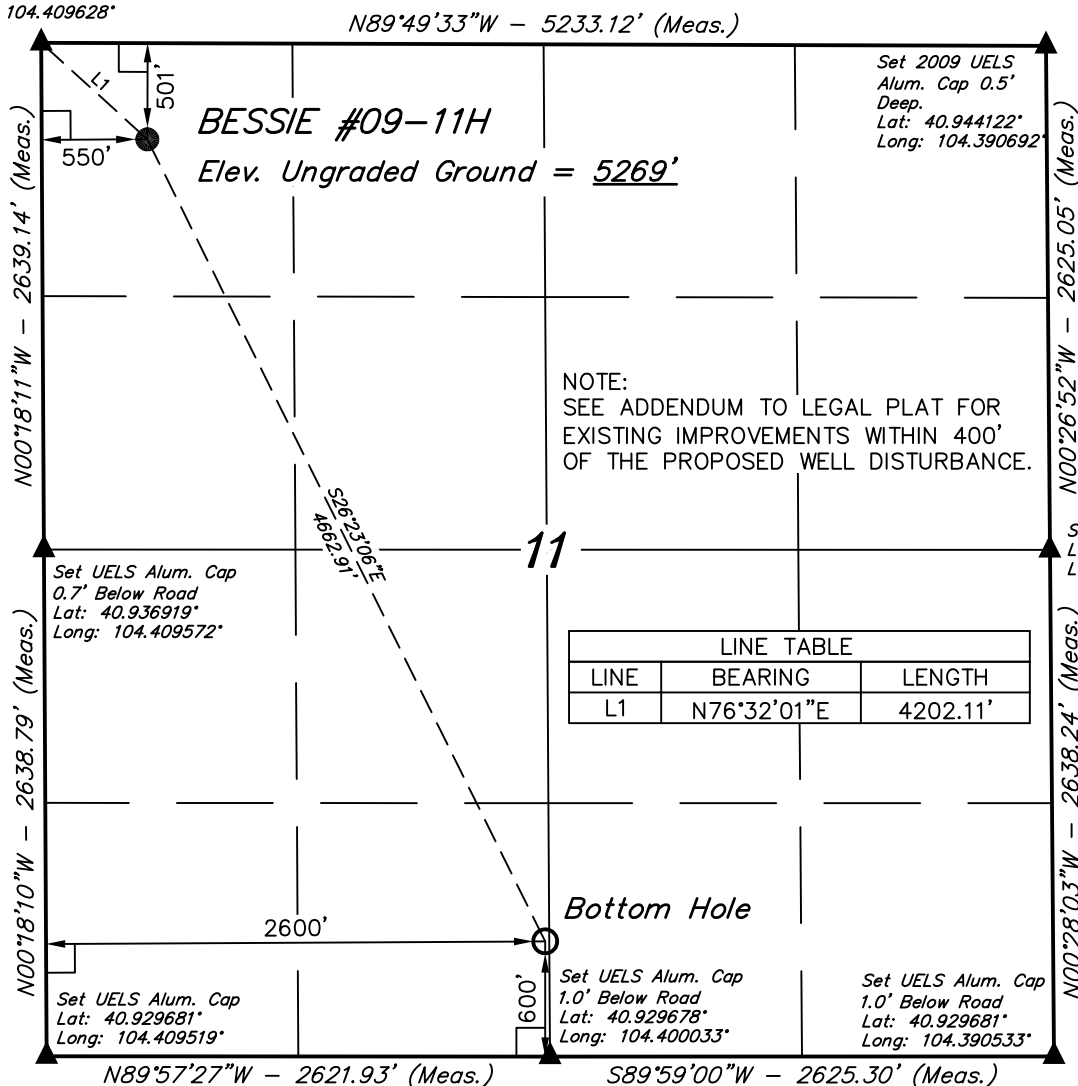
Well location, BESSIE #09-11H, located as shown in the NW 1/4 NW 1/4 of Section 11, T11N, R63W, 6th P.M., Weld County, Colorado.

BASIS OF ELEVATION

SPOT ELEVATION AT THE NORTHEAST CORNER OF SECTION 1, T11N, R63W, 6th P.M. TAKEN FROM THE HEREFORD, QUADRANGLE, COLORADO, WELD COUNTY, 7.5 MINUTE QUAD (TOPOGRAPHIC MAP) PUBLISHED BY THE UNITED STATES DEPARTMENT OF THE INTERIOR, GEOLOGICAL SURVEY. SAID ELEVATION IS MARKED AS BEING 5352 FEET.

BASIS OF BEARINGS

BASIS OF BEARINGS IS A G.P.S. OBSERVATION.



CERTIFICATE

THIS IS TO CERTIFY THAT THE ABOVE PLAT WAS PREPARED FROM FIELD NOTES OF ACTUAL SURVEYS MADE BY ME OR UNDER MY SUPERVISION AND THAT THE SAME ARE TRUE AND CORRECT TO THE BEST OF MY KNOWLEDGE AND BELIEF.

REGISTERED LAND SURVEYOR
REGISTRATION NO. 17492
STATE OF COLORADO

REVISED: 01-18-10 C.C.
REVISED: 09-23-09

LEGEND:

- └─┘ = 90° SYMBOL
- = PROPOSED WELL HEAD.
- ▲ = SECTION CORNERS LOCATED.

PDOP = 1.0

NAD 83 (TARGET BOTTOM HOLE)	NAD 83 (SURFACE LOCATION)
LATITUDE = 40°55'52.77" (40.931325)	LATITUDE = 40°56'34.02" (40.942783)
LONGITUDE = 104°24'00.45" (104.400125)	LONGITUDE = 104°24'27.46" (104.407628)
NAD 27 (TARGET BOTTOM HOLE)	NAD 27 (SURFACE LOCATION)
LATITUDE = 40°55'52.83" (40.931342)	LATITUDE = 40°56'34.08" (40.942800)
LONGITUDE = 104°23'58.61" (104.399614)	LONGITUDE = 104°24'25.62" (104.407117)
STATE PLANE NAD 83 (COLORADO NORTH)	STATE PLANE NAD 83 (COLORADO NORTH)
TARGET BOTTOM HOLE	SURFACE LOCATION:
N: 1584018.88 E: 3303918.02	N: 1588168.44 E: 3301793.40
STATE PLANE NAD 27 (COLORADO NORTH)	STATE PLANE NAD 27 (COLORADO NORTH)
TARGET BOTTOM HOLE:	SURFACE LOCATION:
N: 584016.77 E: 2304067.42	N: 588166.25 E: 2301942.83

UINTAH ENGINEERING & LAND SURVEYING
85 SOUTH 200 EAST - VERNAL, UTAH 84078
(435) 789-1017

SCALE 1" = 1000'	DATE SURVEYED: 09-01-09	DATE DRAWN: 09-14-09
PARTY J.F. T.A. C.H.	REFERENCES G.L.O. PLAT	
WEATHER WARM	FILE EOG RESOURCES, INC.	