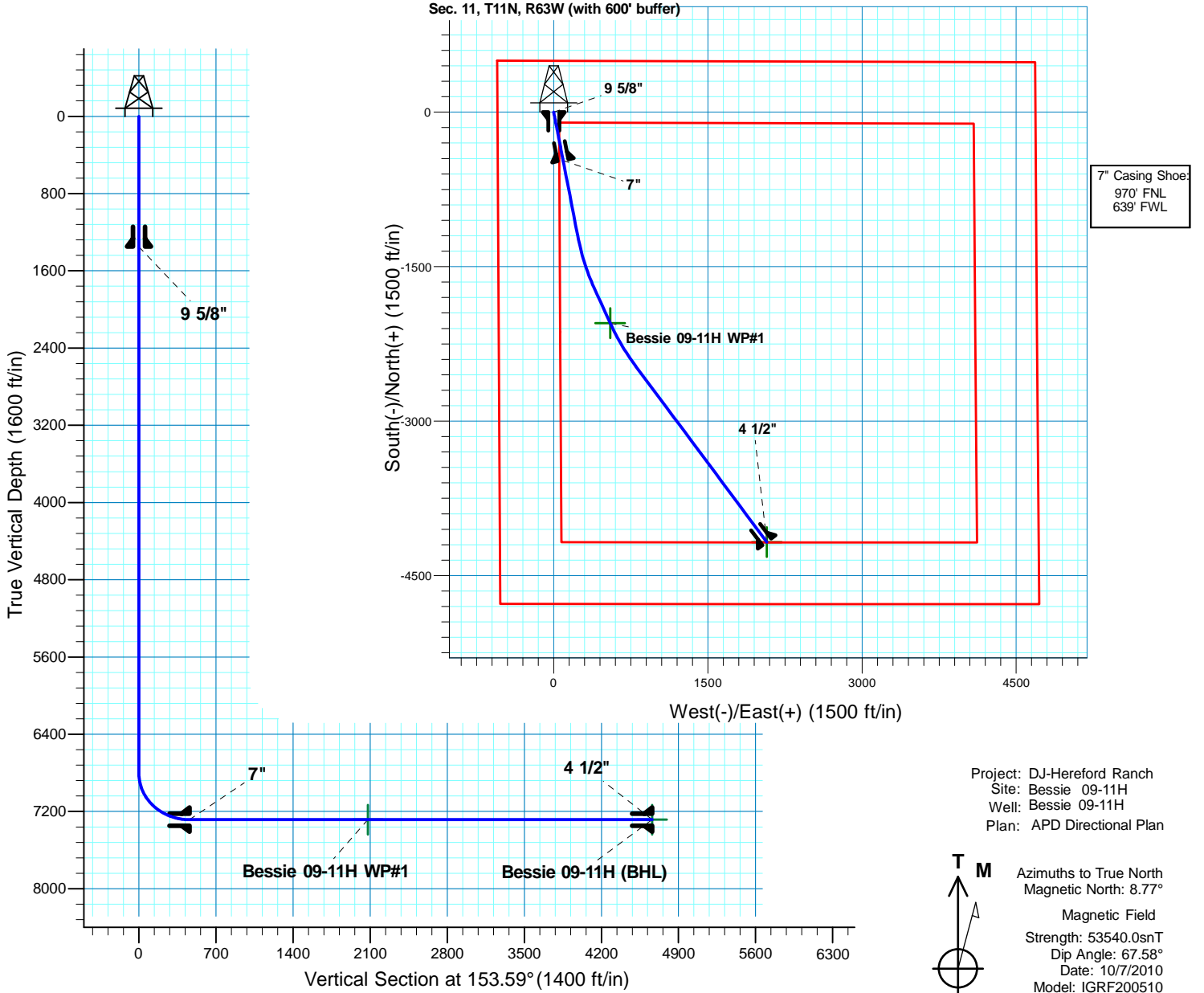


**Bessie 09-11H**  
**Sec. 11-T11N-R63W**  
**Weld County,CO**

Surface Location			
NAD 1927 (NADCON CONUS)		Colorado North 501	
Ground Elevation: 5267.00		Rig @ 5289.00ft (TBD)	
Northing	Easting	Latitude	Longitude
588166.25	2301942.83	40° 56' 34.083 N	104° 24' 25.616 W



SECTION DETAILS										
Sec	MD	Inc	Azi	TVD	+N/-S	+E/-W	Dleg	TFace	VSect	Target
1	0.00	0.00	0.00	0.00	0.00	0.00	0.00	0.00	0.00	
2	6807.54	0.00	0.00	6807.54	0.00	0.00	0.00	0.00	0.00	
3	7557.54	90.00	169.00	7285.00	-468.69	91.10	12.00	169.00	460.30	
4	8307.54	90.00	169.00	7285.00	-1204.91	234.21	0.00	0.00	1183.35	
5	8851.60	90.00	155.40	7285.00	-1721.71	400.15	2.50	-90.00	1720.02	
6	9211.56	90.00	155.40	7285.00	-2049.00	550.00	0.00	0.00	2079.81	Bessie 09-11H WP#1
7	9697.09	90.00	143.26	7285.00	-2465.83	797.20	2.50	-90.00	2563.08	
8	11830.37	90.00	143.26	7285.00	-4175.36	2073.29	0.00	0.00	4661.78	Bessie 09-11H (BHL)
TARGET DETAILS										
Name	TVD	+N/-S	+E/-W	Northing	Easting	Latitude	Longitude	Shape		
Bessie 09-11H (BHL)	7285.00	-4175.36	2073.29	584016.77	2304067.42	40° 55' 52.828 N	104° 23' 58.606 W	Point		
Bessie 09-11H WP#1	7285.00	-2049.00	550.00	586124.19	2302518.04	40° 56' 13.838 N	104° 24' 18.450 W	Point		

# **EOG Resources, Inc.**

**DJ-Hereford Ranch**

**Bessie 09-11H**

**Bessie 09-11H**

**Original Wellbore**

**Plan: APD Directional Plan**

## **Standard Planning Report**

**15 October, 2010**

# Halliburton Company

## Planning Report

<b>Database:</b>	EOG Database	<b>Local Co-ordinate Reference:</b>	Well Bessie 09-11H
<b>Company:</b>	EOG Resources, Inc.	<b>TVD Reference:</b>	Rig @ 5289.00ft
<b>Project:</b>	DJ-Hereford Ranch	<b>MD Reference:</b>	Rig @ 5289.00ft
<b>Site:</b>	Bessie 09-11H	<b>North Reference:</b>	True
<b>Well:</b>	Bessie 09-11H	<b>Survey Calculation Method:</b>	Minimum Curvature
<b>Wellbore:</b>	Original Wellbore		
<b>Design:</b>	APD Directional Plan		

<b>Project</b>	DJ-Hereford Ranch		
<b>Map System:</b>	US State Plane 1927 (Exact solution)	<b>System Datum:</b>	Mean Sea Level
<b>Geo Datum:</b>	NAD 1927 (NADCON CONUS)		
<b>Map Zone:</b>	Colorado North 501		

<b>Site</b>	Bessie 09-11H, Section 11, T11N, R63W		
<b>Site Position:</b>		<b>Northing:</b>	588,166.25 usft
<b>From:</b>	Map	<b>Easting:</b>	2,301,942.83 usft
<b>Position Uncertainty:</b>	0.00 ft	<b>Slot Radius:</b>	13.200 in
		<b>Latitude:</b>	40° 56' 34.083 N
		<b>Longitude:</b>	104° 24' 25.616 W
		<b>Grid Convergence:</b>	0.71 °

<b>Well</b>	Bessie 09-11H		
<b>Well Position</b>	<b>+N/-S</b>	0.00 ft	<b>Northing:</b> 588,166.25 usft
	<b>+E/-W</b>	0.00 ft	<b>Easting:</b> 2,301,942.83 usft
<b>Position Uncertainty</b>	0.00 ft	<b>Wellhead Elevation:</b>	<b>Latitude:</b> 40° 56' 34.083 N
			<b>Longitude:</b> 104° 24' 25.616 W
			<b>Ground Level:</b> 5,267.00 ft

<b>Wellbore</b>	Original Wellbore				
<b>Magnetics</b>	<b>Model Name</b>	<b>Sample Date</b>	<b>Declination (°)</b>	<b>Dip Angle (°)</b>	<b>Field Strength (nT)</b>
	IGRF200510	10/7/2010	8.77	67.58	53,540

<b>Design</b>	APD Directional Plan			
<b>Audit Notes:</b>				
<b>Version:</b>	<b>Phase:</b>	PROTOTYPE	<b>Tie On Depth:</b>	0.00
<b>Vertical Section:</b>	<b>Depth From (TVD)</b>	<b>+N/-S</b>	<b>+E/-W</b>	<b>Direction</b>
	(ft)	(ft)	(ft)	(°)
	0.00	0.00	0.00	153.59

<b>Plan Sections</b>										
Measured Depth (ft)	Inclination (°)	Azimuth (°)	Vertical Depth (ft)	+N/-S (ft)	+E/-W (ft)	Dogleg Rate (°/100ft)	Build Rate (°/100ft)	Turn Rate (°/100ft)	TFO (°)	Target
0.00	0.00	0.00	0.00	0.00	0.00	0.00	0.00	0.00	0.00	
6,807.54	0.00	0.00	6,807.54	0.00	0.00	0.00	0.00	0.00	0.00	
7,557.54	90.00	169.00	7,285.00	-468.69	91.10	12.00	12.00	22.53	169.00	Bessie 09-11H WP#1
8,307.54	90.00	169.00	7,285.00	-1,204.91	234.21	0.00	0.00	0.00	0.00	
8,851.60	90.00	155.40	7,285.00	-1,721.71	400.15	2.50	0.00	-2.50	-90.00	
9,211.56	90.00	155.40	7,285.00	-2,049.00	550.00	0.00	0.00	0.00	0.00	Bessie 09-11H WP#1
9,697.09	90.00	143.26	7,285.00	-2,465.83	797.20	2.50	0.00	-2.50	-90.00	
11,830.37	90.00	143.26	7,285.00	-4,175.36	2,073.29	0.00	0.00	0.00	0.00	Bessie 09-11H (BHL)

## Halliburton Company

## Planning Report

<b>Database:</b>	EOG Database	<b>Local Co-ordinate Reference:</b>	Well Bessie 09-11H
<b>Company:</b>	EOG Resources, Inc.	<b>TVD Reference:</b>	Rig @ 5289.00ft
<b>Project:</b>	DJ-Hereford Ranch	<b>MD Reference:</b>	Rig @ 5289.00ft
<b>Site:</b>	Bessie 09-11H	<b>North Reference:</b>	True
<b>Well:</b>	Bessie 09-11H	<b>Survey Calculation Method:</b>	Minimum Curvature
<b>Wellbore:</b>	Original Wellbore		
<b>Design:</b>	APD Directional Plan		

Planned Survey									
Measured Depth (ft)	Inclination (°)	Azimuth (°)	Vertical Depth (ft)	+N/-S (ft)	+E/-W (ft)	Vertical Section (ft)	Dogleg Rate (°/100ft)	Build Rate (°/100ft)	Turn Rate (°/100ft)
0.00	0.00	0.00	0.00	0.00	0.00	0.00	0.00	0.00	0.00
100.00	0.00	0.00	100.00	0.00	0.00	0.00	0.00	0.00	0.00
200.00	0.00	0.00	200.00	0.00	0.00	0.00	0.00	0.00	0.00
300.00	0.00	0.00	300.00	0.00	0.00	0.00	0.00	0.00	0.00
400.00	0.00	0.00	400.00	0.00	0.00	0.00	0.00	0.00	0.00
500.00	0.00	0.00	500.00	0.00	0.00	0.00	0.00	0.00	0.00
600.00	0.00	0.00	600.00	0.00	0.00	0.00	0.00	0.00	0.00
700.00	0.00	0.00	700.00	0.00	0.00	0.00	0.00	0.00	0.00
800.00	0.00	0.00	800.00	0.00	0.00	0.00	0.00	0.00	0.00
900.00	0.00	0.00	900.00	0.00	0.00	0.00	0.00	0.00	0.00
1,000.00	0.00	0.00	1,000.00	0.00	0.00	0.00	0.00	0.00	0.00
1,100.00	0.00	0.00	1,100.00	0.00	0.00	0.00	0.00	0.00	0.00
1,200.00	0.00	0.00	1,200.00	0.00	0.00	0.00	0.00	0.00	0.00
1,300.00	0.00	0.00	1,300.00	0.00	0.00	0.00	0.00	0.00	0.00
1,350.00	0.00	0.00	1,350.00	0.00	0.00	0.00	0.00	0.00	0.00
9 5/8"									
1,400.00	0.00	0.00	1,400.00	0.00	0.00	0.00	0.00	0.00	0.00
1,500.00	0.00	0.00	1,500.00	0.00	0.00	0.00	0.00	0.00	0.00
1,600.00	0.00	0.00	1,600.00	0.00	0.00	0.00	0.00	0.00	0.00
1,700.00	0.00	0.00	1,700.00	0.00	0.00	0.00	0.00	0.00	0.00
1,800.00	0.00	0.00	1,800.00	0.00	0.00	0.00	0.00	0.00	0.00
1,900.00	0.00	0.00	1,900.00	0.00	0.00	0.00	0.00	0.00	0.00
2,000.00	0.00	0.00	2,000.00	0.00	0.00	0.00	0.00	0.00	0.00
2,100.00	0.00	0.00	2,100.00	0.00	0.00	0.00	0.00	0.00	0.00
2,200.00	0.00	0.00	2,200.00	0.00	0.00	0.00	0.00	0.00	0.00
2,300.00	0.00	0.00	2,300.00	0.00	0.00	0.00	0.00	0.00	0.00
2,400.00	0.00	0.00	2,400.00	0.00	0.00	0.00	0.00	0.00	0.00
2,500.00	0.00	0.00	2,500.00	0.00	0.00	0.00	0.00	0.00	0.00
2,600.00	0.00	0.00	2,600.00	0.00	0.00	0.00	0.00	0.00	0.00
2,700.00	0.00	0.00	2,700.00	0.00	0.00	0.00	0.00	0.00	0.00
2,800.00	0.00	0.00	2,800.00	0.00	0.00	0.00	0.00	0.00	0.00
2,900.00	0.00	0.00	2,900.00	0.00	0.00	0.00	0.00	0.00	0.00
3,000.00	0.00	0.00	3,000.00	0.00	0.00	0.00	0.00	0.00	0.00
3,100.00	0.00	0.00	3,100.00	0.00	0.00	0.00	0.00	0.00	0.00
3,200.00	0.00	0.00	3,200.00	0.00	0.00	0.00	0.00	0.00	0.00
3,300.00	0.00	0.00	3,300.00	0.00	0.00	0.00	0.00	0.00	0.00
3,400.00	0.00	0.00	3,400.00	0.00	0.00	0.00	0.00	0.00	0.00
3,500.00	0.00	0.00	3,500.00	0.00	0.00	0.00	0.00	0.00	0.00
3,600.00	0.00	0.00	3,600.00	0.00	0.00	0.00	0.00	0.00	0.00
3,700.00	0.00	0.00	3,700.00	0.00	0.00	0.00	0.00	0.00	0.00
3,800.00	0.00	0.00	3,800.00	0.00	0.00	0.00	0.00	0.00	0.00
3,900.00	0.00	0.00	3,900.00	0.00	0.00	0.00	0.00	0.00	0.00
4,000.00	0.00	0.00	4,000.00	0.00	0.00	0.00	0.00	0.00	0.00
4,100.00	0.00	0.00	4,100.00	0.00	0.00	0.00	0.00	0.00	0.00
4,200.00	0.00	0.00	4,200.00	0.00	0.00	0.00	0.00	0.00	0.00
4,300.00	0.00	0.00	4,300.00	0.00	0.00	0.00	0.00	0.00	0.00
4,400.00	0.00	0.00	4,400.00	0.00	0.00	0.00	0.00	0.00	0.00
4,500.00	0.00	0.00	4,500.00	0.00	0.00	0.00	0.00	0.00	0.00
4,600.00	0.00	0.00	4,600.00	0.00	0.00	0.00	0.00	0.00	0.00
4,700.00	0.00	0.00	4,700.00	0.00	0.00	0.00	0.00	0.00	0.00
4,800.00	0.00	0.00	4,800.00	0.00	0.00	0.00	0.00	0.00	0.00
4,900.00	0.00	0.00	4,900.00	0.00	0.00	0.00	0.00	0.00	0.00
5,000.00	0.00	0.00	5,000.00	0.00	0.00	0.00	0.00	0.00	0.00
5,100.00	0.00	0.00	5,100.00	0.00	0.00	0.00	0.00	0.00	0.00

# Halliburton Company

## Planning Report

<b>Database:</b>	EOG Database	<b>Local Co-ordinate Reference:</b>	Well Bessie 09-11H
<b>Company:</b>	EOG Resources, Inc.	<b>TVD Reference:</b>	Rig @ 5289.00ft
<b>Project:</b>	DJ-Hereford Ranch	<b>MD Reference:</b>	Rig @ 5289.00ft
<b>Site:</b>	Bessie 09-11H	<b>North Reference:</b>	True
<b>Well:</b>	Bessie 09-11H	<b>Survey Calculation Method:</b>	Minimum Curvature
<b>Wellbore:</b>	Original Wellbore		
<b>Design:</b>	APD Directional Plan		

Planned Survey									
Measured Depth (ft)	Inclination (°)	Azimuth (°)	Vertical Depth (ft)	+N/-S (ft)	+E/-W (ft)	Vertical Section (ft)	Dogleg Rate (°/100ft)	Build Rate (°/100ft)	Turn Rate (°/100ft)
5,200.00	0.00	0.00	5,200.00	0.00	0.00	0.00	0.00	0.00	0.00
5,300.00	0.00	0.00	5,300.00	0.00	0.00	0.00	0.00	0.00	0.00
5,400.00	0.00	0.00	5,400.00	0.00	0.00	0.00	0.00	0.00	0.00
5,500.00	0.00	0.00	5,500.00	0.00	0.00	0.00	0.00	0.00	0.00
5,600.00	0.00	0.00	5,600.00	0.00	0.00	0.00	0.00	0.00	0.00
5,700.00	0.00	0.00	5,700.00	0.00	0.00	0.00	0.00	0.00	0.00
5,800.00	0.00	0.00	5,800.00	0.00	0.00	0.00	0.00	0.00	0.00
5,900.00	0.00	0.00	5,900.00	0.00	0.00	0.00	0.00	0.00	0.00
6,000.00	0.00	0.00	6,000.00	0.00	0.00	0.00	0.00	0.00	0.00
6,100.00	0.00	0.00	6,100.00	0.00	0.00	0.00	0.00	0.00	0.00
6,200.00	0.00	0.00	6,200.00	0.00	0.00	0.00	0.00	0.00	0.00
6,300.00	0.00	0.00	6,300.00	0.00	0.00	0.00	0.00	0.00	0.00
6,400.00	0.00	0.00	6,400.00	0.00	0.00	0.00	0.00	0.00	0.00
6,500.00	0.00	0.00	6,500.00	0.00	0.00	0.00	0.00	0.00	0.00
6,600.00	0.00	0.00	6,600.00	0.00	0.00	0.00	0.00	0.00	0.00
6,700.00	0.00	0.00	6,700.00	0.00	0.00	0.00	0.00	0.00	0.00
6,800.00	0.00	0.00	6,800.00	0.00	0.00	0.00	0.00	0.00	0.00
6,807.54	0.00	0.00	6,807.54	0.00	0.00	0.00	0.00	0.00	0.00
6,900.00	11.10	169.00	6,899.42	-8.76	1.70	8.60	12.00	12.00	0.00
7,000.00	23.10	169.00	6,994.83	-37.57	7.30	36.89	12.00	12.00	0.00
7,100.00	35.10	169.00	7,082.05	-85.21	16.56	83.69	12.00	12.00	0.00
7,200.00	47.10	169.00	7,157.27	-149.62	29.08	146.94	12.00	12.00	0.00
7,300.00	59.10	169.00	7,217.21	-227.97	44.31	223.89	12.00	12.00	0.00
7,400.00	71.10	169.00	7,259.25	-316.84	61.59	311.17	12.00	12.00	0.00
7,500.00	83.10	169.00	7,281.54	-412.35	80.15	404.97	12.00	12.00	0.00
7,557.54	90.00	169.00	7,285.00	-468.69	91.10	460.30	12.00	12.00	0.00
7"									
7,600.00	90.00	169.00	7,285.00	-510.38	99.21	501.24	0.00	0.00	0.00
7,700.00	90.00	169.00	7,285.00	-608.54	118.29	597.65	0.00	0.00	0.00
7,800.00	90.00	169.00	7,285.00	-706.70	137.37	694.06	0.00	0.00	0.00
7,900.00	90.00	169.00	7,285.00	-804.87	156.45	790.46	0.00	0.00	0.00
8,000.00	90.00	169.00	7,285.00	-903.03	175.53	886.87	0.00	0.00	0.00
8,100.00	90.00	169.00	7,285.00	-1,001.19	194.61	983.27	0.00	0.00	0.00
8,200.00	90.00	169.00	7,285.00	-1,099.35	213.69	1,079.68	0.00	0.00	0.00
8,300.00	90.00	169.00	7,285.00	-1,197.52	232.77	1,176.09	0.00	0.00	0.00
8,307.54	90.00	169.00	7,285.00	-1,204.91	234.21	1,183.35	0.00	0.00	0.00
8,400.00	90.00	166.69	7,285.00	-1,295.30	253.68	1,272.96	2.50	0.00	-2.50
8,500.00	90.00	164.19	7,285.00	-1,392.08	278.82	1,370.82	2.50	0.00	-2.50
8,600.00	90.00	161.69	7,285.00	-1,487.67	308.16	1,469.49	2.50	0.00	-2.50
8,700.00	90.00	159.19	7,285.00	-1,581.89	341.64	1,568.77	2.50	0.00	-2.50
8,800.00	90.00	156.69	7,285.00	-1,674.56	379.19	1,668.47	2.50	0.00	-2.50
8,851.60	90.00	155.40	7,285.00	-1,721.71	400.15	1,720.02	2.50	0.00	-2.50
8,900.00	90.00	155.40	7,285.00	-1,765.72	420.30	1,768.40	0.00	0.00	0.00
9,000.00	90.00	155.40	7,285.00	-1,856.64	461.93	1,868.35	0.00	0.00	0.00
9,100.00	90.00	155.40	7,285.00	-1,947.57	503.56	1,968.30	0.00	0.00	0.00
9,200.00	90.00	155.40	7,285.00	-2,038.49	545.19	2,068.25	0.00	0.00	0.00
9,211.56	90.00	155.40	7,285.00	-2,049.00	550.00	2,079.81	0.00	0.00	0.00
Bessie 09-11H WP#1									
9,300.00	90.00	153.19	7,285.00	-2,128.68	588.36	2,168.23	2.50	0.00	-2.50
9,400.00	90.00	150.69	7,285.00	-2,216.92	635.40	2,268.18	2.50	0.00	-2.50
9,500.00	90.00	148.19	7,285.00	-2,303.02	686.24	2,367.91	2.50	0.00	-2.50
9,600.00	90.00	145.69	7,285.00	-2,386.82	740.79	2,467.23	2.50	0.00	-2.50
9,697.09	90.00	143.26	7,285.00	-2,465.83	797.20	2,563.08	2.50	0.00	-2.50
9,700.00	90.00	143.26	7,285.00	-2,468.16	798.95	2,565.95	0.00	0.00	0.00

# Halliburton Company

## Planning Report

<b>Database:</b>	EOG Database	<b>Local Co-ordinate Reference:</b>	Well Bessie 09-11H
<b>Company:</b>	EOG Resources, Inc.	<b>TVD Reference:</b>	Rig @ 5289.00ft
<b>Project:</b>	DJ-Hereford Ranch	<b>MD Reference:</b>	Rig @ 5289.00ft
<b>Site:</b>	Bessie 09-11H	<b>North Reference:</b>	True
<b>Well:</b>	Bessie 09-11H	<b>Survey Calculation Method:</b>	Minimum Curvature
<b>Wellbore:</b>	Original Wellbore		
<b>Design:</b>	APD Directional Plan		

Planned Survey									
Measured Depth (ft)	Inclination (°)	Azimuth (°)	Vertical Depth (ft)	+N/-S (ft)	+E/-W (ft)	Vertical Section (ft)	Dogleg Rate (°/100ft)	Build Rate (°/100ft)	Turn Rate (°/100ft)
9,800.00	90.00	143.26	7,285.00	-2,548.30	858.77	2,664.33	0.00	0.00	0.00
9,900.00	90.00	143.26	7,285.00	-2,628.43	918.58	2,762.71	0.00	0.00	0.00
10,000.00	90.00	143.26	7,285.00	-2,708.57	978.40	2,861.09	0.00	0.00	0.00
10,100.00	90.00	143.26	7,285.00	-2,788.71	1,038.22	2,959.46	0.00	0.00	0.00
10,200.00	90.00	143.26	7,285.00	-2,868.84	1,098.04	3,057.84	0.00	0.00	0.00
10,300.00	90.00	143.26	7,285.00	-2,948.98	1,157.86	3,156.22	0.00	0.00	0.00
10,400.00	90.00	143.26	7,285.00	-3,029.11	1,217.67	3,254.60	0.00	0.00	0.00
10,500.00	90.00	143.26	7,285.00	-3,109.25	1,277.49	3,352.98	0.00	0.00	0.00
10,600.00	90.00	143.26	7,285.00	-3,189.39	1,337.31	3,451.36	0.00	0.00	0.00
10,700.00	90.00	143.26	7,285.00	-3,269.52	1,397.13	3,549.74	0.00	0.00	0.00
10,800.00	90.00	143.26	7,285.00	-3,349.66	1,456.95	3,648.11	0.00	0.00	0.00
10,900.00	90.00	143.26	7,285.00	-3,429.80	1,516.76	3,746.49	0.00	0.00	0.00
11,000.00	90.00	143.26	7,285.00	-3,509.93	1,576.58	3,844.87	0.00	0.00	0.00
11,100.00	90.00	143.26	7,285.00	-3,590.07	1,636.40	3,943.25	0.00	0.00	0.00
11,200.00	90.00	143.26	7,285.00	-3,670.20	1,696.22	4,041.63	0.00	0.00	0.00
11,300.00	90.00	143.26	7,285.00	-3,750.34	1,756.04	4,140.01	0.00	0.00	0.00
11,400.00	90.00	143.26	7,285.00	-3,830.48	1,815.85	4,238.39	0.00	0.00	0.00
11,500.00	90.00	143.26	7,285.00	-3,910.61	1,875.67	4,336.76	0.00	0.00	0.00
11,600.00	90.00	143.26	7,285.00	-3,990.75	1,935.49	4,435.14	0.00	0.00	0.00
11,700.00	90.00	143.26	7,285.00	-4,070.88	1,995.31	4,533.52	0.00	0.00	0.00
11,800.00	90.00	143.26	7,285.00	-4,151.02	2,055.13	4,631.90	0.00	0.00	0.00
11,830.37	90.00	143.26	7,285.00	-4,175.36	2,073.29	4,661.78	0.00	0.00	0.00
Bessie 09-11H (BHL)									

Design Targets									
Target Name	Dip Angle (°)	Dip Dir. (°)	TVD (ft)	+N/-S (ft)	+E/-W (ft)	Northing (usft)	Easting (usft)	Latitude	Longitude
- hit/miss target									
- Shape									
Bessie 09-11H WP#1	0.00	0.00	7,285.00	-2,049.00	550.00	586,124.19	2,302,518.04	40° 56' 13.838 N	104° 24' 18.450 W
- plan hits target center									
- Point									
Bessie 09-11H (BHL)	0.00	0.00	7,285.00	-4,175.36	2,073.29	584,016.77	2,304,067.42	40° 55' 52.828 N	104° 23' 58.606 W
- plan hits target center									
- Point									

Casing Points					
Measured Depth (ft)	Vertical Depth (ft)	Name	Casing Diameter (in)	Hole Diameter (in)	
1,350.00	1,350.00	9 5/8"	9.625	13.500	
7,557.54	7,285.00	7"	7.000	8.750	
11,830.37	7,285.00	4 1/2"	4.500	6.000	

# Halliburton Company

## Planning Report

<b>Database:</b>	EOG Database	<b>Local Co-ordinate Reference:</b>	Well Bessie 09-11H
<b>Company:</b>	EOG Resources, Inc.	<b>TVD Reference:</b>	Rig @ 5289.00ft
<b>Project:</b>	DJ-Hereford Ranch	<b>MD Reference:</b>	Rig @ 5289.00ft
<b>Site:</b>	Bessie 09-11H	<b>North Reference:</b>	True
<b>Well:</b>	Bessie 09-11H	<b>Survey Calculation Method:</b>	Minimum Curvature
<b>Wellbore:</b>	Original Wellbore		
<b>Design:</b>	APD Directional Plan		

Formations						
Measured Depth (ft)	Vertical Depth (ft)	Name	Lithology	Dip (°)	Dip Direction (°)	
0.00	0.00	White River		0.00		
763.00	763.00	Fox Hills		0.00		
969.00	969.00	Pierre Shale		0.00		
3,554.00	3,554.00	Terry SS		0.00		
4,150.00	4,150.00	Hygiene		0.00		
7,171.14	7,137.00	Sharon Springs		0.00		
7,271.76	7,202.00	Niobrara	Shale	0.00		
7,311.50	7,223.00	B1 Chalk		0.00		
7,418.85	7,265.00	B-Chalk	Chalk	0.00		
7,557.54	7,285.00	Target Zone		0.00		