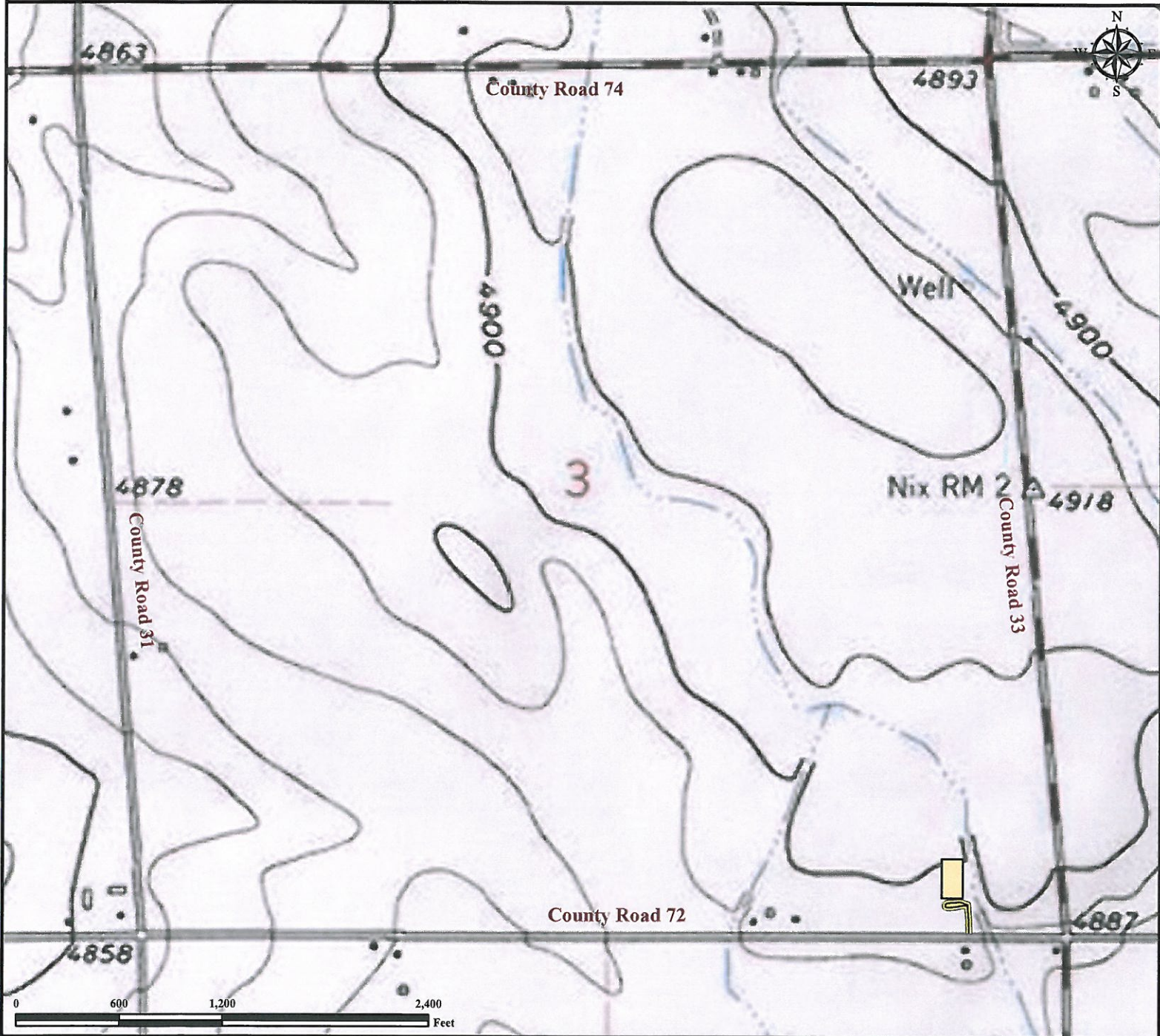


Access Road Map

OPDYKE TRUST Facility

Multi Well Pad

SE¼ SE¼ SECTION 3, TOWNSHIP 6 NORTH, RANGE 66 WEST OF THE 6TH PRINCIPAL MERIDIAN



Proposed Access to OPDYKE TRUST Facility: From the Junction of County Road 31 and County Road 72, head east approximately 0.90 miles and turn left onto existing private road. Continue on private road approximately 0.035 miles and turn left to facility location.

**** Size of proposed facility has been exaggerated to be visible at this scale ****

Legend

- Proposed Facility
- Proposed Access Route

Reference Location

**** All Measurements are Made from Reference Point ★ (NAD 83)****

LAT: 40.510742° LONG: -104.756313° (NAD 83)

Surface Use: Cropland



Use our resources to find yours!
www.petro-fs.com
 (303) 928-7128

Field Date: 8/25/2010
 Drafting Date: 8/29/2010
 Drafter: KLM
 Checked By: BHF

Data Sources:
 - Aerial courtesy of NAIP (2009)

Prepared for: