

Multi Well Plan

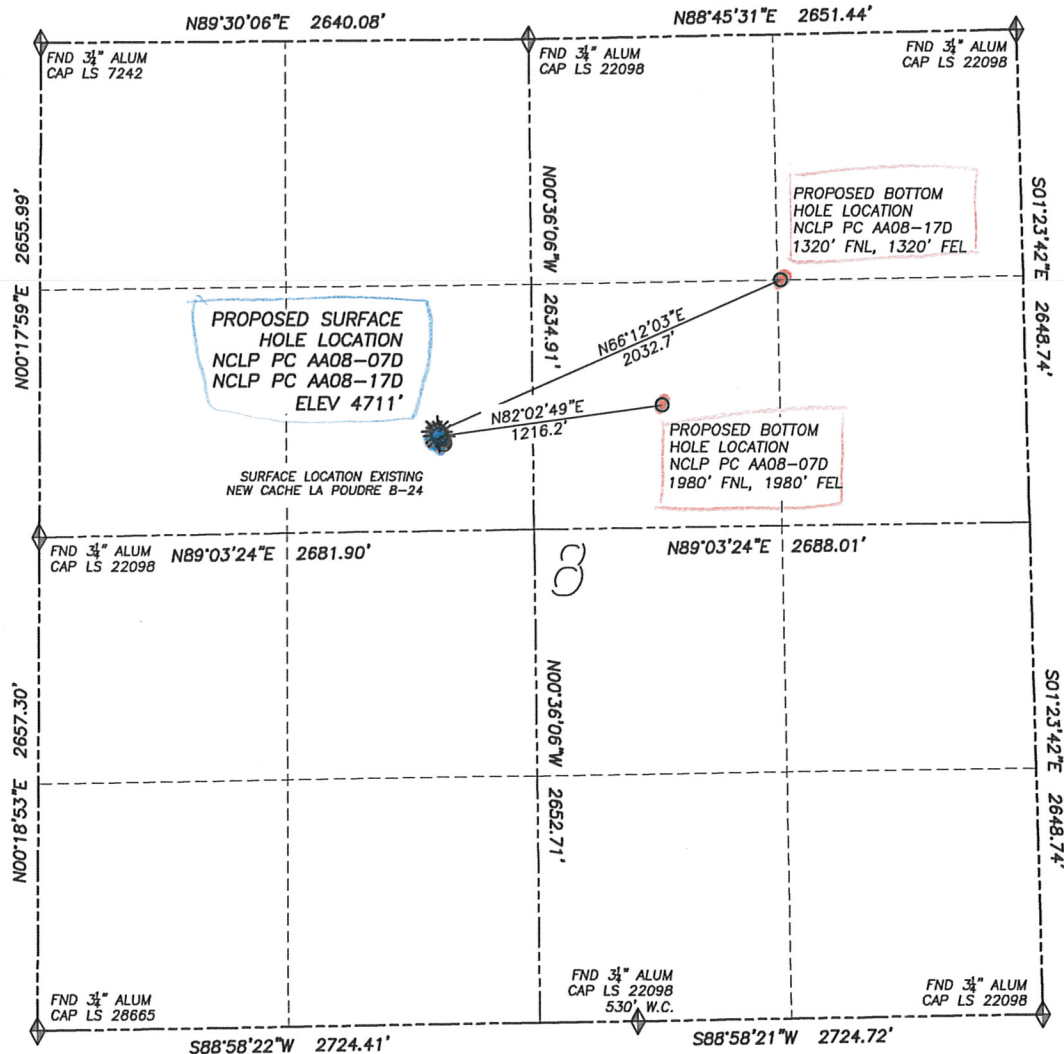
DALEY LAND SURVEYING, INC.

PARKER, CO. 80134

303 953 9841

DIRECTIONAL LAYOUT NCLP PC AA08-07D & NCLP PC AA08-17D

SECTION 8, TOWNSHIP 6 NORTH, RANGE 63 WEST OF THE 6TH PRINCIPAL MERIDIAN



NAD 83 LATITUDE AND LONGITUDE

NCLP PC AA08-07D SURFACE HOLE:

LATITUDE: N40.50251°
LONGITUDE: W104.46250°
ELEVATION: 4711'
PDOP 2.1
2129' FNL, 2166' FWL

BOTTOM HOLE:

LATITUDE: N40.50297°
LONGITUDE: W104.45817°
1980' FNL, 1980' FEL

NEAREST EXISTING WELL:

NEW CACHE LA POUDRE 8-24
SURFACE HOLE
LATITUDE: N40.50240°
LONGITUDE: W104.46242°
ELEVATION: 4712'
47' SOUTHEAST

NAD 83 LATITUDE AND LONGITUDE

NCLP PC AA08-17D SURFACE HOLE:

LATITUDE: N40.50257°
LONGITUDE: W104.46254°
ELEVATION: 4711'
PDOP 1.5
2107' FNL, 2154' FWL

BOTTOM HOLE:

LATITUDE: N40.50482°
LONGITUDE: W104.45585°
1320' FNL, 1320' FEL

NEAREST EXISTING WELL:

NEW CACHE LA POUDRE 8-24
SURFACE HOLE
LATITUDE: N40.50240°
LONGITUDE: W104.46242°
ELEVATION: 4712'
72' SOUTHEAST