

DALEY LAND SURVEYING, INC.

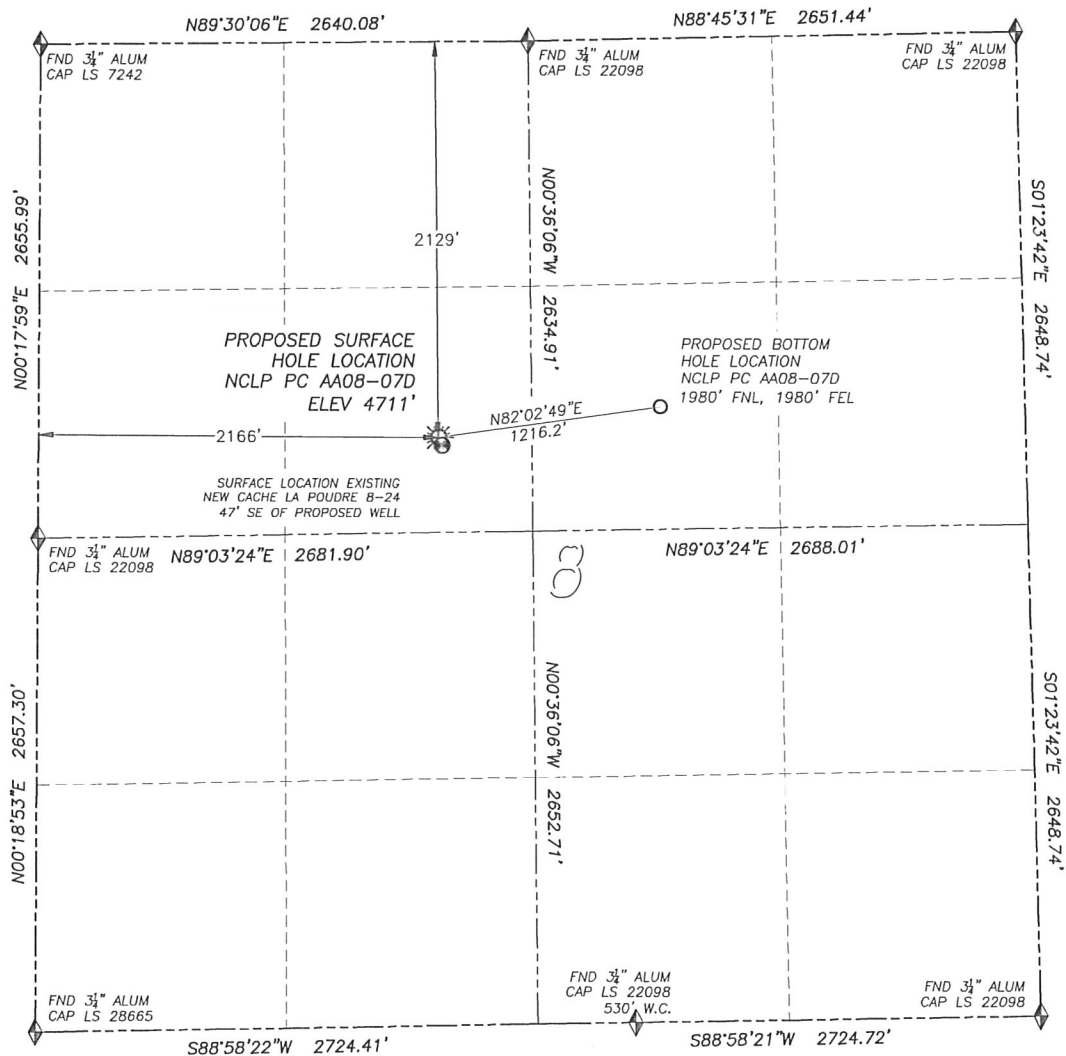
PARKER, CO. 80134

303 953 9841

WELL LOCATION CERTIFICATE

NCLP PC AA08-07D

SECTION 8, TOWNSHIP 6 NORTH, RANGE 63 WEST OF THE 6TH PRINCIPAL MERIDIAN



0 500 1000
SCALE: 1" = 1000'

LEGEND

- ◆ FOUND MONUMENT AS DESCRIBED
- ☀ PROPOSED WELL
- ⊙ EXISTING WELL
- BOTTOM HOLE
- ⊘ ABANDONED WELL

NAD 83 LATITUDE AND LONGITUDE**NCLP PC AA08-07D SURFACE HOLE:**

LATITUDE: N40.50251°
LONGITUDE: W104.46250°
ELEVATION: 4711'
PDOP 2.1

2129' FNL, 2166' FWL

BOTTOM HOLE:

LATITUDE: N40.50297°
LONGITUDE: W104.45817°
1980' FNL, 1980' FEL

NEAREST EXISTING WELL:

NEW CACHE LA POUDE 8-24
SURFACE HOLE

LATITUDE: N40.50240°
LONGITUDE: W104.46242°
ELEVATION: 4712'
47' SOUTHEAST

QUARTER/QUARTER: SE4/NW4

NEAREST APPARENT PROPERTY LINE:

2025'± SOUTHWEST

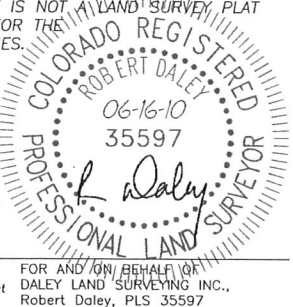
IN ACCORDANCE WITH A REQUEST FROM ROBBIE MILLER OF NOBLE ENERGY INC., DALEY LAND SURVEYING, INC. HAS DETERMINED THE SURFACE LOCATION OF THE NCLP PC AA08-07D WELL TO BE 2129' FNL, 2166' FWL, AS MEASURED AT NINETY (90) DEGREES FROM THE SECTION LINES OF SECTION 8, TOWNSHIP 6 NORTH, RANGE 63 WEST OF THE 6TH PRINCIPAL MERIDIAN, WELD COUNTY, COLORADO. THE BOTTOM HOLE LOCATION, PROVIDED BY THE CLIENT, IS TO BE 1980' FNL, 1980' FEL OF SECTION 8.

I HEREBY CERTIFY THAT THIS WELL LOCATION CERTIFICATE WAS PREPARED BY ME OR UNDER MY DIRECT SUPERVISION, THAT THE WORK WAS COMPLETED ON 6/14/2010 FOR AND ON BEHALF OF NOBLE ENERGY, INC., AND THAT THIS MAP DOES NOT REPRESENT A BOUNDARY SURVEY, IT IS NOT A LAND SURVEY PLAT OR AN IMPROVEMENT SURVEY PLAT AND IT IS NOT TO BE RELIED UPON FOR THE ESTABLISHMENT OF FENCE, BUILDING OR OTHER FUTURE IMPROVEMENT LINES.

NOTES:

- 1) BEARINGS FOR THIS MAP ARE ASSUMED AND BASED UPON GPS OBSERVATIONS MADE BETWEEN MONUMENTS LOCATED AT THE NORTHWEST CORNER AND WEST QUARTER CORNER OF SECTION 8, T.6N., R.63W.
- 2) HORIZONTAL DATUM IS NAD83.
- 3) VERTICAL DATUM IS NAVD88. ELEVATIONS ARE DERIVED FROM GPS OBSERVATIONS PROCESSED THROUGH OPUS, UTILIZING THE GEOID03 MODEL.
- 4) SEE VISIBLE IMPROVEMENTS EXHIBIT FOR VISIBLE IMPROVEMENTS WITHIN 600' OF PROPOSED SURFACE HOLE LOCATION.
- 5) SURFACE USE: AGRICULTURAL.

NOTICE: According to Colorado law you MUST commence any legal action based upon any defect in this W.L.C. within three years after you first discover such defect. In no event may any action based upon any such defect in this W.L.C. be commenced more than ten years from the date of the certification shown herein.



FOR AND ON BEHALF OF
DALEY LAND SURVEYING, INC.,
Robert Daley, PLS 35597

DALEY LAND SURVEYING, INC.

PARKER, CO. 80134

303 953 9841

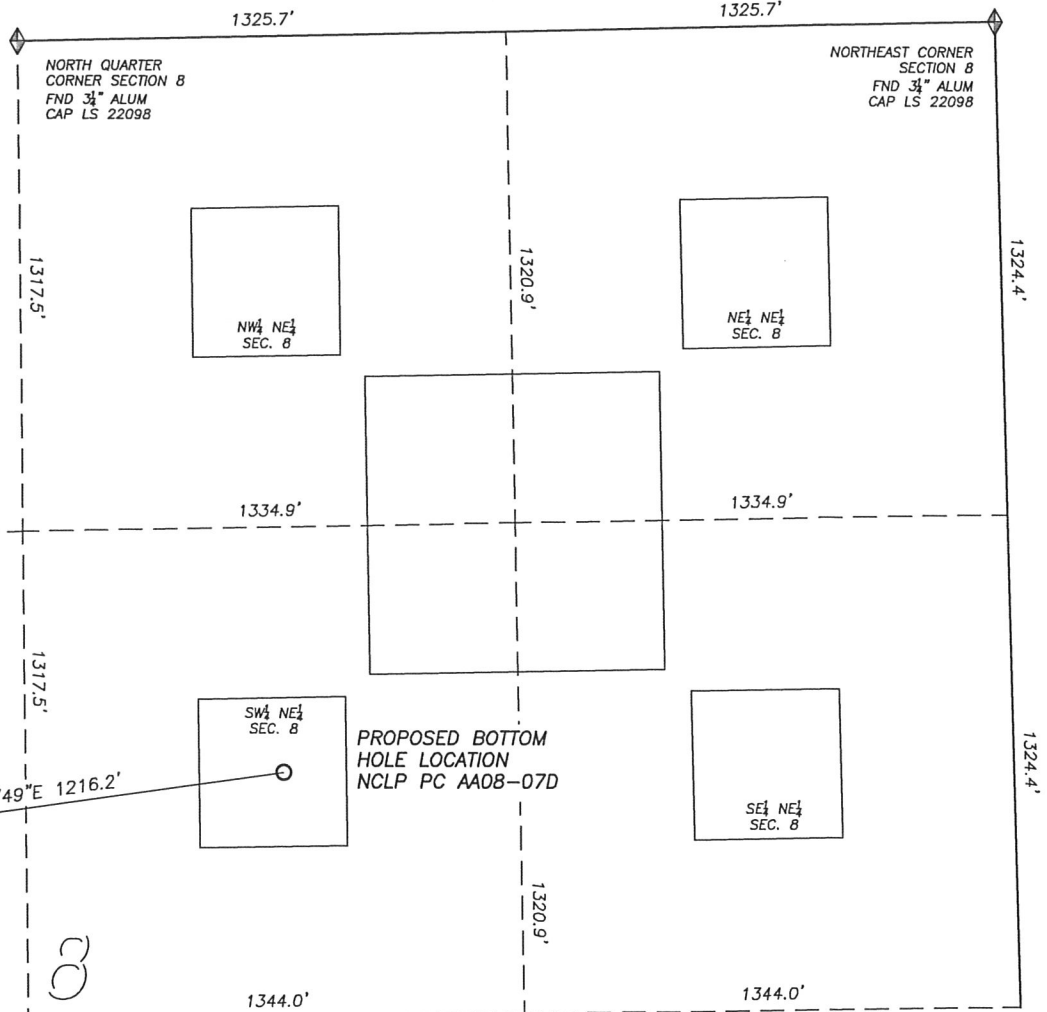
SITE SKETCH NCLP PC AA08-07D

SECTION 8, TOWNSHIP 6 NORTH, RANGE 63 WEST OF THE 6TH PRINCIPAL MERIDIAN

- LEGEND**
- FOUND MONUMENT AS DESCRIBED
 - PROPOSED WELL
 - EXISTING WELL
 - BOTTOM HOLE
 - ABANDONED WELL



SCALE: 1" = 500'



NO WELLS EXIST IN THIS QUARTER SECTION

NOTES:

- 1) THIS DOES NOT REPRESENT A BOUNDARY SURVEY
- 2) THE LATITUDES AND LONGITUDES SHOWN ARE REFERENCED TO NAD83
- 3) DATUM FOR ELEVATION IS NAVD88. ELEVATIONS ARE DERIVED FROM GPS-RTK OBSERVATIONS PROCESSED THROUGH OPUS, UTILIZING THE GEOID03 MODEL.

PAD DETAIL

PROPOSED
NCLP PC AA08-17D
NCLP PC AA08-07D

CENTERLINE
ACCESS ROAD

NCLP PC AA08-17D BH
NCLP PC AA08-07D BH

SURFACE LOCATION
EXISTING NEW CACHE
LA POUDRE 8-24

WELL SPACING

NCLP 8-24 - NCLP PC AA08-07D.....47'
NCLP PC AA08-07D - NCLP PC AA08-17D.....25'