
OXY GRAND JUNCTION EBUSINESS

GIPP 18-12C
BRUSH CREEK
Mesa County , Colorado

Cement Surface Casing
08-Dec-2008

Job Site Documents

The Road to Excellence Starts with Safety

Sold To #: 344034	Ship To #: 2665962	Quote #:	Sales Order #: 6369334
Customer: OXY GRAND JUNCTION EBUSINESS		Customer Rep: CHANEY, PHIL	
Well Name: GIPP		Well #: 18-12C	API/UWI #: 05-077-09587
Field: BRUSH CREEK	City (SAP): COLLBRAN	County/Parish: Mesa	State: Colorado
Lat: N 39.275 deg. OR N 39 deg. 16 min. 30.925 secs.		Long: W 107.818 deg. OR W -108 deg. 10 min. 56.842 secs.	
Contractor: GREYWOLF 109		Rig/Platform Name/Num: GREYWOLF 109	
Job Purpose: Cement Surface Casing			
Well Type: Development Well		Job Type: Cement Surface Casing	
Sales Person: HARTLEY, RICHARD		Srvc Supervisor: LEIST, JAMES	MBU ID Emp #: 362787

Job Personnel

HES Emp Name	Exp Hrs	Emp #	HES Emp Name	Exp Hrs	Emp #	HES Emp Name	Exp Hrs	Emp #
ANGLESTEIN, TROY Edward WM	2	436099	CARPENTER, MARK Alan	2	442360	HUGHES, STEVEN Shane	2	300140
LEIST, JAMES R	2	362787	MANSPEAKER, GUY E	2	330171	VIGIL, JOSHUA Quentin	2	447606

Equipment

HES Unit #	Distance-1 way	HES Unit #	Distance-1 way	HES Unit #	Distance-1 way	HES Unit #	Distance-1 way
10025041	60 mile	10086132C	60 mile	10547378	60 mile	10783493	60 mile
10822007	60 mile	10829468	60 mile	10872429	60 mile	10897909	60 mile

Job Hours

Date	On Location Hours	Operating Hours	Date	On Location Hours	Operating Hours	Date	On Location Hours	Operating Hours
12-08-08	6	1						

TOTAL Total is the sum of each column separately

Job

Job Times

Formation Name	Top	Bottom	Called Out	Date	Time	Time Zone
Formation Depth (MD)			On Location	08 - Dec - 2008	02:00	MST
Form Type		BHST	Job Started	08 - Dec - 2008	05:00	MST
Job depth MD	1536. ft	Job Depth TVD	Job Completed	08 - Dec - 2008	11:09	MST
Water Depth		Wk Ht Above Floor	Departed Loc	08 - Dec - 2008	11:58	MST
Perforation Depth (MD)	<i>From</i>	<i>To</i>		08 - Dec - 2008	13:30	MST

Well Data

Description	New / Used	Max pressure psig	Size in	ID in	Weight lbm/ft	Thread	Grade	Top MD ft	Bottom MD ft	Top TVD ft	Bottom TVD ft
Sales/Rental/3rd Party (HES)											

Description	Qty	Qty uom	Depth	Supplier
PORT. DAS W/CEMWIN;ACQUIRE W/HES, ZI	1	JOB		
ADC (AUTO DENSITY CTRL) SYS, /JOB,ZI	1	JOB		
PLUG,CMTG,TOP,8 5/8,HWE,7.20 MIN/8.09 MA	1	EA		

Tools and Accessories

Type	Size	Qty	Make	Depth	Type	Size	Qty	Make	Depth	Type	Size	Qty	Make
Guide Shoe					Packer					Top Plug	8.625	1	
Float Shoe					Bridge Plug					Bottom Plug			
Float Collar					Retainer					SSR plug set			
Insert Float										Plug Container	8.625	1	
Stage Tool										Centralizers			

Miscellaneous Materials

Gelling Agt	Conc	Surfactant	Conc	Acid Type	Qty	Conc %
Treatment Fld	Conc	Inhibitor	Conc	Sand Type	Size	Qty

Fluid Data									
Stage/Plug #: 1									
Fluid #	Stage Type	Fluid Name	Qty	Qty uom	Mixing Density lbm/gal	Yield ft ³ /sk	Mix Fluid Gal/sk	Rate bbl/min	Total Mix Fluid Gal/sk
1	WATER SPACER		20	bbl	8.33	.0	.0	.0	
2	Lead Cement	VERSACEM (TM) SYSTEM (452010)	220	sacks	12.3	2.38	13.75		
	2 %	CAL-SEAL 60, 50 LB BAG (101217146)							
	2 %	ECONOLITE (100001580)							
	0.3 %	VERSASET, 55 LB SK (101376573)							
	5.64 lbm	SALT, 100 LB BAG (100003652)							
	0.125 lbm	POLY-E-FLAKE (101216940)							
	0.25 %	D-AIR 3000 (101007446)							
	13.75 Gal	FRESH WATER							
3	Tail Cement	SWIFTCEM (TM) SYSTEM (452990)	220	sacks	14.2	1.43	6.88		
4	DISPLACEMENT		91.6	bbl	.	.0	.0	.0	
Calculated Values		Pressures		Volumes					
Displacement	91.6	Shut In: Instant		Lost Returns	0	Cement Slurry	149.2	Pad	
Top Of Cement	SURFACE	5 Min		Cement Returns	36	Actual Displacement	91.6	Treatment	
Frac Gradient		15 Min		Spacers	20	Load and Breakdown		Total Job	
Rates									
Circulating	5 RIG	Mixing		8	Displacement	8	Avg. Job	8	
Cement Left In Pipe	Amount	32.4 ft	Reason	Shoe Joint					
Frac Ring # 1 @	ID	Frac ring # 2 @	ID	Frac Ring # 3 @	ID	Frac Ring # 4 @	ID		
The Information Stated Herein Is Correct				Customer Representative Signature					

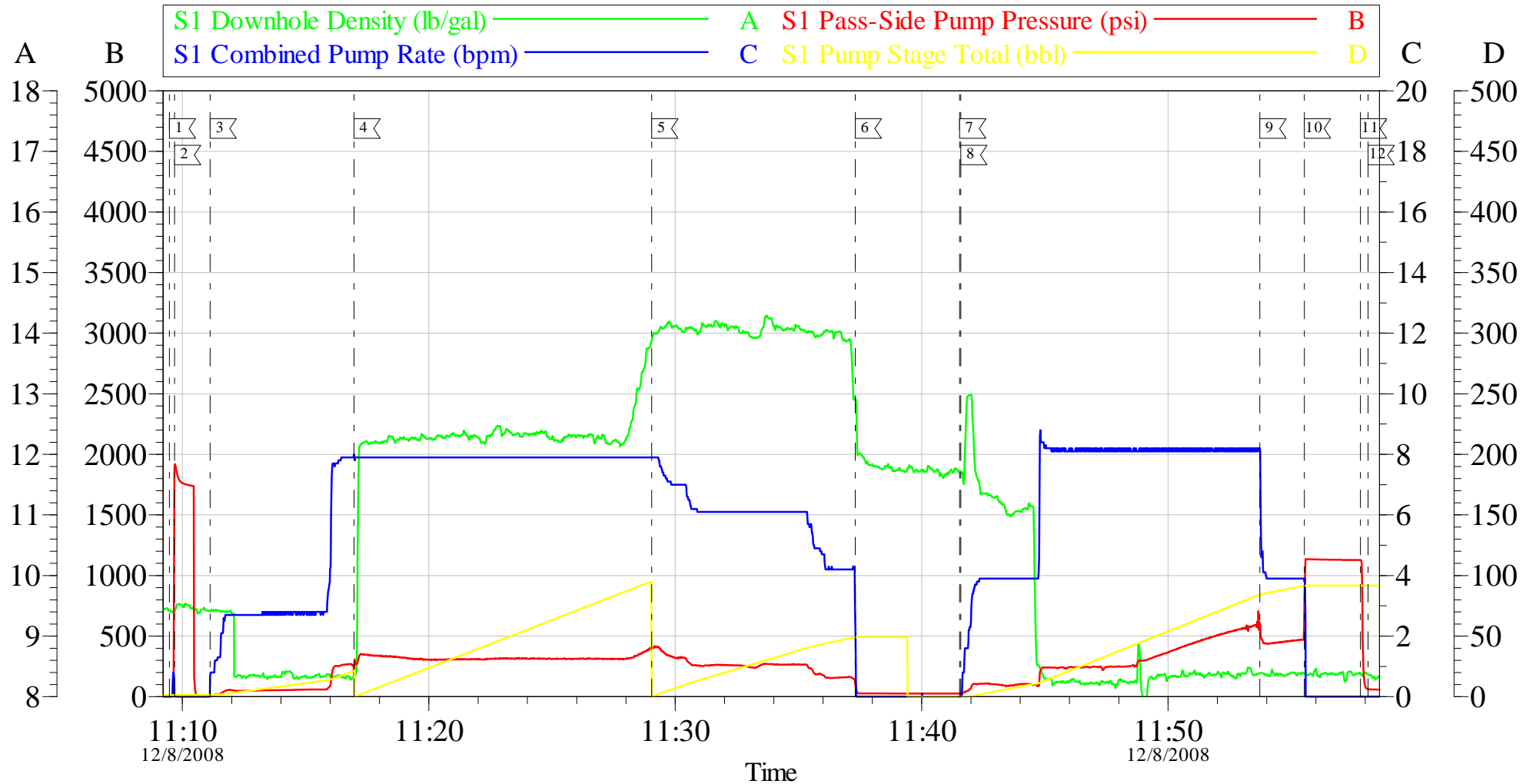
The Road to Excellence Starts with Safety

Sold To #: 344034	Ship To #: 2665962	Quote #:	Sales Order #: 6369334
Customer: OXY GRAND JUNCTION EBUSINESS		Customer Rep: CHANEY, PHIL	
Well Name: GIPP		Well #: 18-12C	API/UWI #: 05-077-09587
Field: BRUSH CREEK	City (SAP): COLLBRAN	County/Parish: Mesa	State: Colorado
Legal Description:			
Lat: N 39.275 deg. OR N 39 deg. 16 min. 30.925 secs.		Long: W 107.818 deg. OR W -108 deg. 10 min. 56.842 secs.	
Contractor: GREYWOLF 109		Rig/Platform Name/Num: GREYWOLF 109	
Job Purpose: Cement Surface Casing			Ticket Amount:
Well Type: Development Well		Job Type: Cement Surface Casing	
Sales Person: HARTLEY, RICHARD		Srv Supervisor: LEIST, JAMES	MBU ID Emp #: 362787

Activity Description	Date/Time	Cht #	Rate bbl/min	Volume bbl		Pressure psig		Comments
				Stage	Total	Tubing	Casing	
Call Out	12/08/2008 02:00							TP-1537, TD-1536, S.J.-32.4, HOLE-12 1/4
Pre-Convoy Safety Meeting	12/08/2008 03:30							WITH ALL HES PERSONNEL
Crew Leave Yard	12/08/2008 03:35							GOOD CIRULATION THROUGHTOUT JOB, NO PIPE MOVEMENT DURING JOB
Arrive At Loc	12/08/2008 05:30							RIG CIRULATED FOR 30MIN. PUMP STOPED WORKING SHUTDOWN FOR 30 MIN. REGAINED CIRULATION, PUMPED AGAIN FOR 20 MIN. PRIOR TO JOB
Assessment Of Location Safety Meeting	12/08/2008 05:35							WITH ALL HES PERSONNEL
Pre-Rig Up Safety Meeting	12/08/2008 05:35							WITH ALL HES PERSONNEL
Rig-Up Completed	12/08/2008 06:00							
Pre-Job Safety Meeting	12/08/2008 10:30							WITH ALL ON LOCATION PERSONNEL
Start Job	12/08/2008 11:09							
Pressure Test	12/08/2008 11:09						1900.0	
Pump Spacer 1	12/08/2008 11:11		4		20		280.0	
Pump Lead Cement	12/08/2008 11:16		8		93.2		340.0	220 SKS, 12.3 PPG, 2.83 FT3/SK, 13.75 GAL/SK

Activity Description	Date/Time	Cht #	Rate bbl/min	Volume bbl		Pressure psig		Comments
				Stage	Total	Tubing	Casing	
Pump Tail Cement	12/08/2008 11:29		8		56		385.0	220 SKS, 14.2 PPG, 1.43 FT3/SK, 6.88 GAL/SK
Shutdown	12/08/2008 11:37							
Drop Top Plug	12/08/2008 11:41							AWAY
Pump Displacement	12/08/2008 11:41		8		91.6		560.0	H2O
Slow Rate	12/08/2008 11:53		4		82		460.0	
Bump Plug	12/08/2008 11:55		4		91.6		467.0	
Check Floats	12/08/2008 11:57							HOLDING
End Job	12/08/2008 11:58							
Pre-Rig Down Safety Meeting	12/08/2008 12:00							WITH ALL HES PERSONNEL
Rig-Down Completed	12/08/2008 12:30							
Pre-Convoy Safety Meeting	12/08/2008 13:00							WITH ALL HES PERSONNEL
Crew Leave Location	12/08/2008 13:30							
Comment	12/08/2008 13:45							THANKYOU FOR USING HALLIBURTON CEMENT

OXY SURFACE



Local Event Log			
1 STARTJOB	11:09:28	2 PRESSURE TEST	11:09:41
			3 PUMP SPACER
			11:11:08
4 PUMP LEAD CMT	11:16:58	5 PUMP TAIL CMT	11:29:03
			6 SHUTDOWN
			11:37:18
7 DROP TOP PLUG	11:41:32	8 PUMP DISPLACEMENT	11:41:35
			9 SLOW RATE
			11:53:44
10 BUMP PLUG	11:55:32	11 CHECK FLOATS	11:57:48
			12 END JOB
			11:58:07

Customer: OXY	Job Date: 08-Dec-2008	Sales Order #: 6369334
Well Description: GIPP 18-12C	Job Type: SURFACE	ADC Used: YES
Company Rep: PHIL CHANEY	Cement Supervisor: JAMES LEIST	Elite #: 11