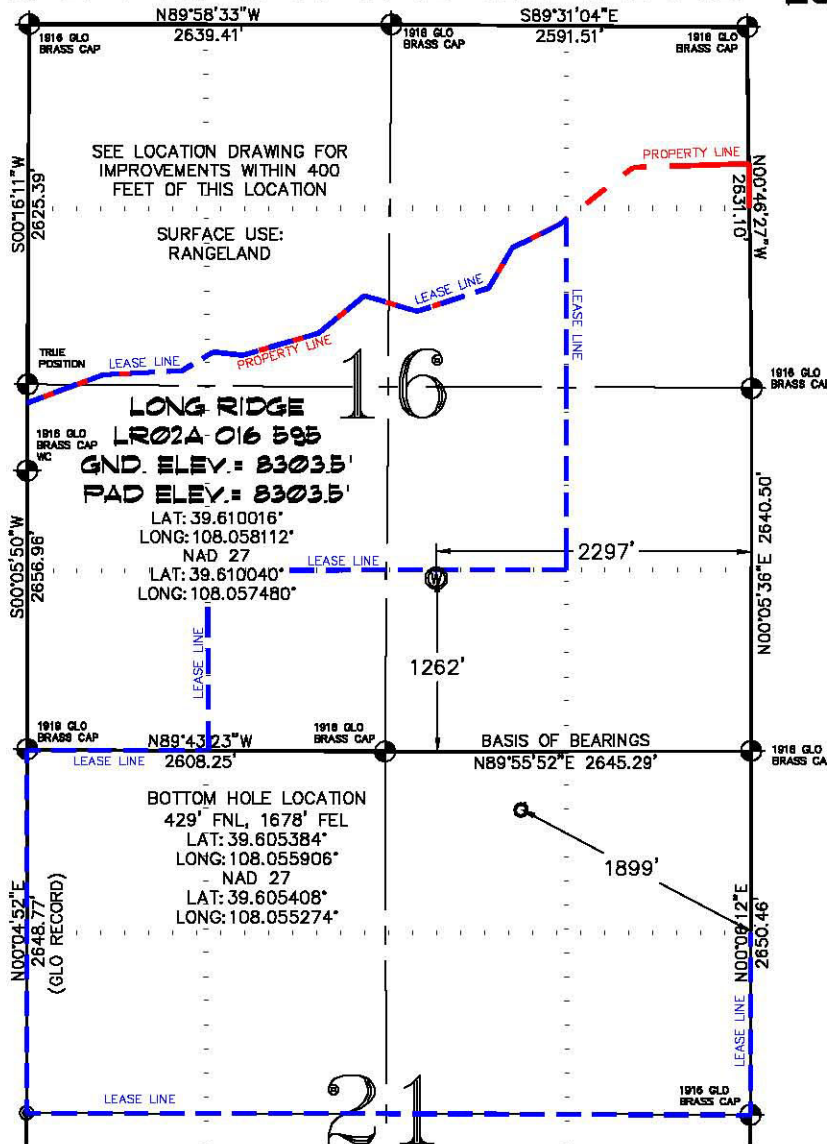


SEC. 16, T. 5 S., R. 95 W. OF THE 6TH P.M.

Long Ridge 016-595
Pad Location



700' 0 1400'
GRAPHIC SCALE IN FEET
1 INCH = 1400 FEET

-LEGEND-

- SECTION CORNER
LOCATION BASED ON GLO
RECORD INFORMATION
- ⊙ FIELD SURVEYED SECTION
CORNER LOCATIONS
- ⊙ FIELD SURVEYED WELL
LOCATION
- ⊙ CALCULATED BOTTOM
HOLE LOCATION

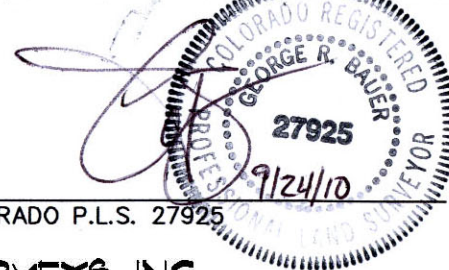
THIS WELL LOCATION PLAT WAS PREPARED FOR BERRY PETROLEUM COMPANY TO LOCATE THE LONG RIDGE LR02A 016 595 WELL, 1262 FEET FROM THE SOUTH LINE AND 2297 FEET FROM THE EAST LINE IN THE SW1/4 SE1/4 OF SECTION 16, T. 5 S., R. 95 W. OF THE 6TH P.M. GARFIELD COUNTY, COLORADO.

REFERENCE NOTES

- 1) T. 5 S., R. 95 W., 6TH P.M. GLO PLAT.
- 2) U.S.G.S. QUAD: FORKED GULCH, CO
- 3) ELEVATIONS BASED ON N.A.V.D. 1988
- 4) LATITUDES AND LONGITUDES ARE BASED ON NAD 83, COLORADO CENTRAL ZONE.
- 5) GPS OPERATOR IVAN MARTIN, OBSERVED A PDOP OF 2.2.
- 6) ALL GPS OBSERVATIONS ARE IN COMPLIANCE WITH COGCC RULE NO. 215.
- 7) SURFACE AND BOTTOM HOLE LOCATIONS ARE MEASURED 90° FROM SECTION LINES.

SURVEYOR'S CERTIFICATE

I, George R. Bauer: a Professional Land Surveyor in the State of Colorado do hereby certify that this Survey was made under my direct supervision, and that this Plat represents said Survey.



COLORADO P.L.S. 27925



CONSTRUCTION SURVEYS, INC.
0012 SUNRISE BLVD.
SILT, CO 81652
(970)876-5753

VIEW: 1F

SURVEYED: 09/14/10	SCALE: 1" = 1400'
DRAFTED: 09/20/10	DWG: Berry/LongRidge 016-595.dwg
REVISED: 09/22/10	SHEET: 1 of 11