

LOCATION DRAWING

VEGETATION:
PASTURE—GRASSES

SURFACE USE:
GRAZING

REFERENCE POINT

LATITUDE: 40.786580

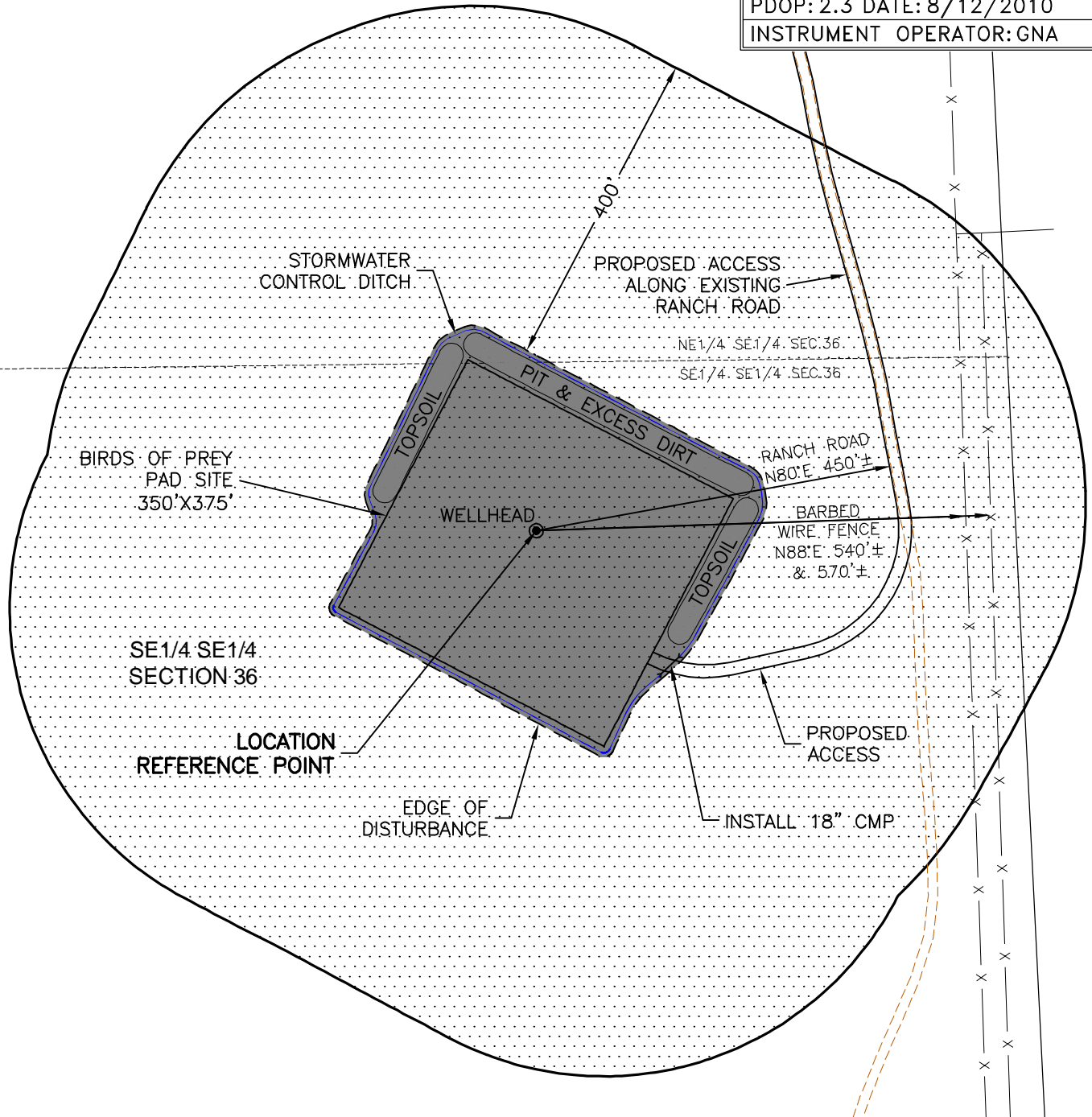
LONGITUDE: -104.146466

FOOTAGE: 1173 FSL 600 FEL

GROUND ELEVATION: 5077.2

PDOP: 2.3 DATE: 8/12/2010

INSTRUMENT OPERATOR: GNA



DISTURBANCE ACREAGE:

4.1± DRILLING OPERATIONS

1.0± INTERIM RECLAIM

10/20/10



North

0 200 400

Graphic Scale in Feet
1 inch = 200 feet



LAND SURVEYING AND MAPPING
LAFAYETTE - WINTER PARK
Ph 303 666 0379 Fx 303 665 6320

SLAWSON EXPLORATION CO., INC.
BIRDS OF PREY 36-10-61 PAD

SE1/4 SE1/4 SEC. 36 T10N R61W
6th PM WELD COUNTY COLORADO