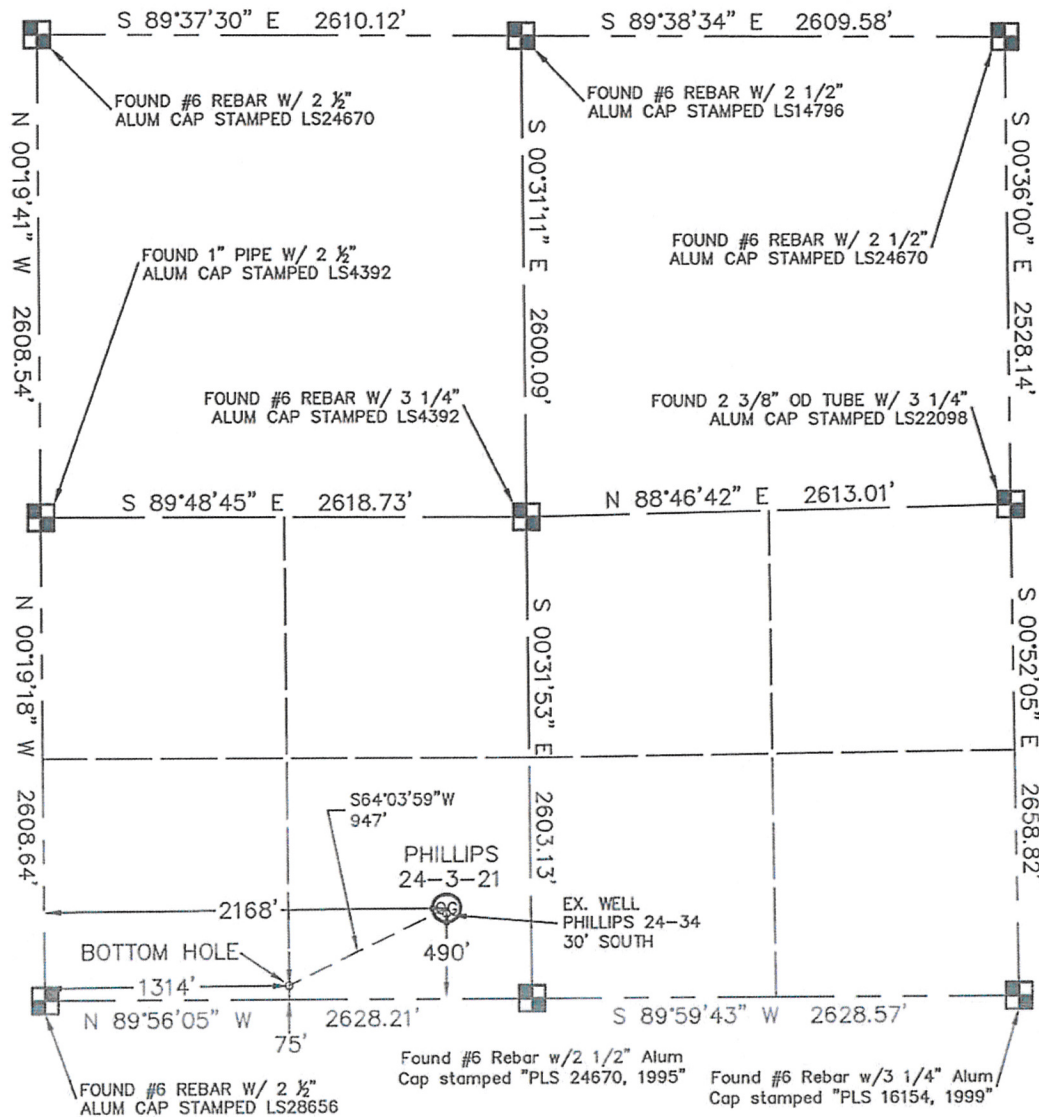


# WELL LOCATION CERTIFICATE

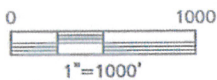
THIS MAP DOES NOT REPRESENT A BOUNDARY SURVEY

SECTION: 24  
TOWNSHIP: 5N  
RANGE: 67W



In accordance with a request from JOE JOHNSON with Noble Energy Inc. King Surveyors Inc. has determined the surface location of the PHILLIPS 24-3-21 to be 490' from the SOUTH line and 2168' from the WEST line and the bottom hole to be 75' from the SOUTH line and 1314' from the WEST line, as measured at right angles, from the section lines of Section 24, Township 5 North, Range 67 West of the Sixth Principal Meridian, County of Weld, State of Colorado.

I hereby state that this Well Location Certificate was prepared by me, or under my direct supervision, that the fieldwork was completed on 4-26-2010, for and on behalf of Noble Energy Inc. That this is not a Land Survey Plat or an Improvement Survey Plat, and that it is not to be relied upon for establishment of fence, building, or other future improvement lines.



**NOTE:**

- 1) Bearings shown are Grid Bearings of the Colorado State Plane Coordinate System, North Zone, North American Datum 1983/92. The lined dimensions as contained herein are based upon the "U.S. Survey Foot."
- 2) Ground elevations are based on an observed GPS elevation (NAVD 1988 DATUM).
- 3) NEAREST EXISTING WELL: PHILLIPS 24-34 30' SOUTH
- 4) IMPROVEMENTS: See VISIBLE IMPROVEMENTS exhibit for all visible improvements within 400' of well head.
- 5) SURFACE USE: CROP FIELD; OIL & GAS WELL AND ROAD



**SURFACE LOCATION**  
LATITUDE: 40.37918°N  
LONGITUDE: 104.84318°W  
PDOP: 1.2  
ELEV: 5023'  
1/4, 1/4: SE1/4 SW1/4  
NEAREST PROPERTY LINE: 458' EAST

**BOTTOM HOLE**  
LATITUDE: 40.37806°N  
LONGITUDE: 104.84624°W

**NOTE**

According to Colorado law, you must commence any legal action based upon any defect in this W.L.C. within three years after you discover such defect. In no event, may any action based upon any defect in this survey be commenced more than ten years after the date of the certificate shown hereon. (13-80-105 C.R.S.)

**LEGEND**

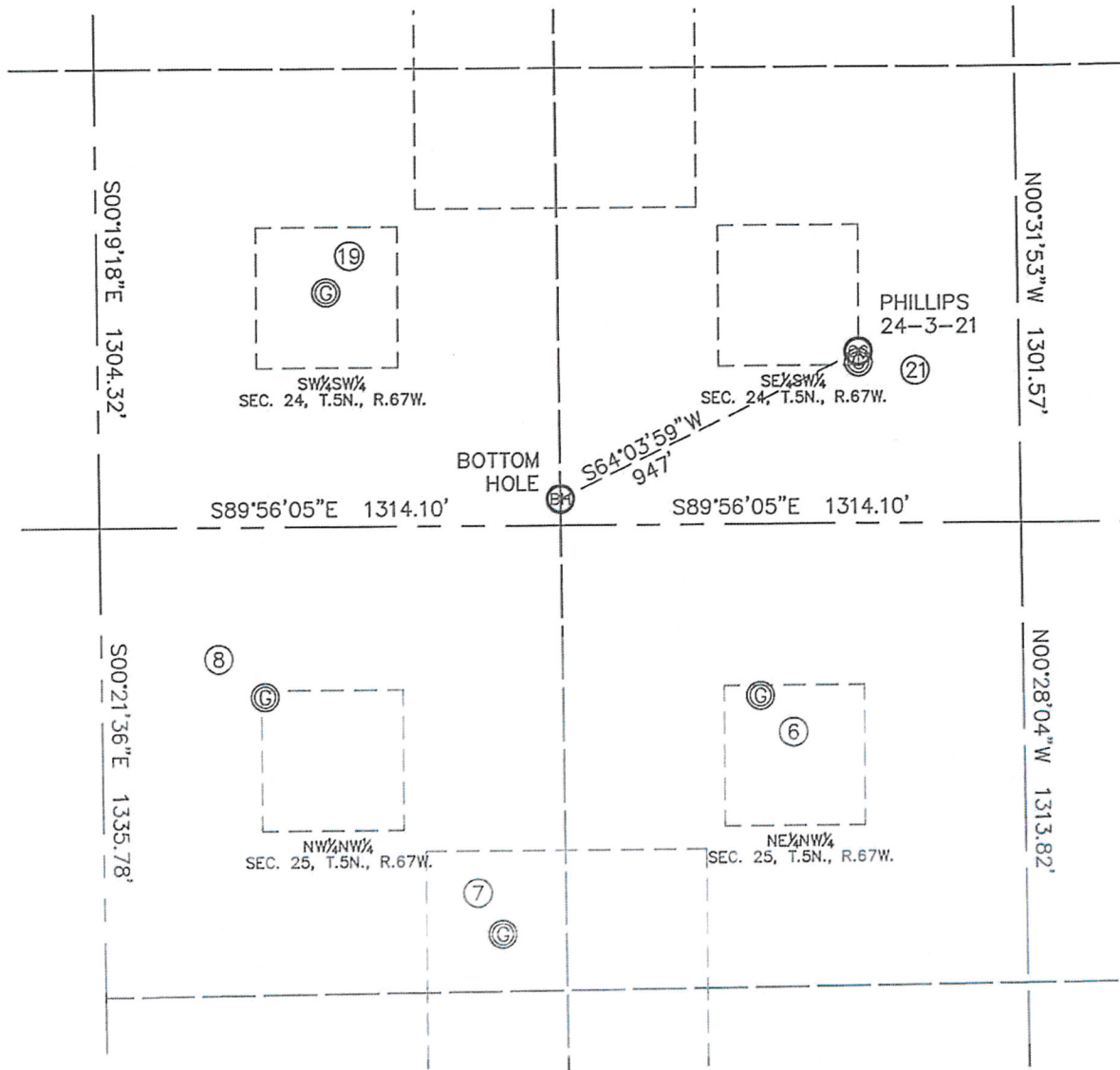
-  = ALIQUOT MONUMENT AS DESCRIBED
-  = CALCULATED POSITION

5-18-2010

Michael Chad Dilk On Behalf Of King Surveyors, Inc.  
Colorado Licensed Professional Land Surveyor #38106  
PROJECT#: 2010144

SITE SKETCH

SECTION: 24  
TOWNSHIP: 5N  
RANGE: 67W



⑥

BOOTH N 25-3  
NE1/4 NW1/4  
488' FNL  
1876' FWL  
LAT-40.37650°N  
LONG-104.84423°W  
PDOP: 1.5  
ELEV: 5041'

⑦

BOOTH N 25-19  
NW1/4 NW1/4  
1164' FNL  
1133' FWL  
LAT-40.37467°N  
LONG-104.84690°W  
PDOP: 1.3  
ELEV: 5039'

⑧

BOOTH N 25-4  
NW1/4 NW1/4  
484' FNL  
469' FWL  
LAT-40.37655°N  
LONG-104.84928°W  
PDOP: 1.2  
ELEV: 5039'

⑱

PHILLIPS #1  
SW1/4 SW1/4  
666' FSL  
655' FWL  
LAT-40.37970°N  
LONG-104.84860°W  
PDOP: 1.8  
ELEV: 5051'

⑳

DL PHILLIPS 24-34  
SE1/4 SW1/4  
460' FSL  
2168' FWL  
LAT-40.37910°N  
LONG-104.84318°W  
PDOP: 3.2  
ELEV: 5025'

