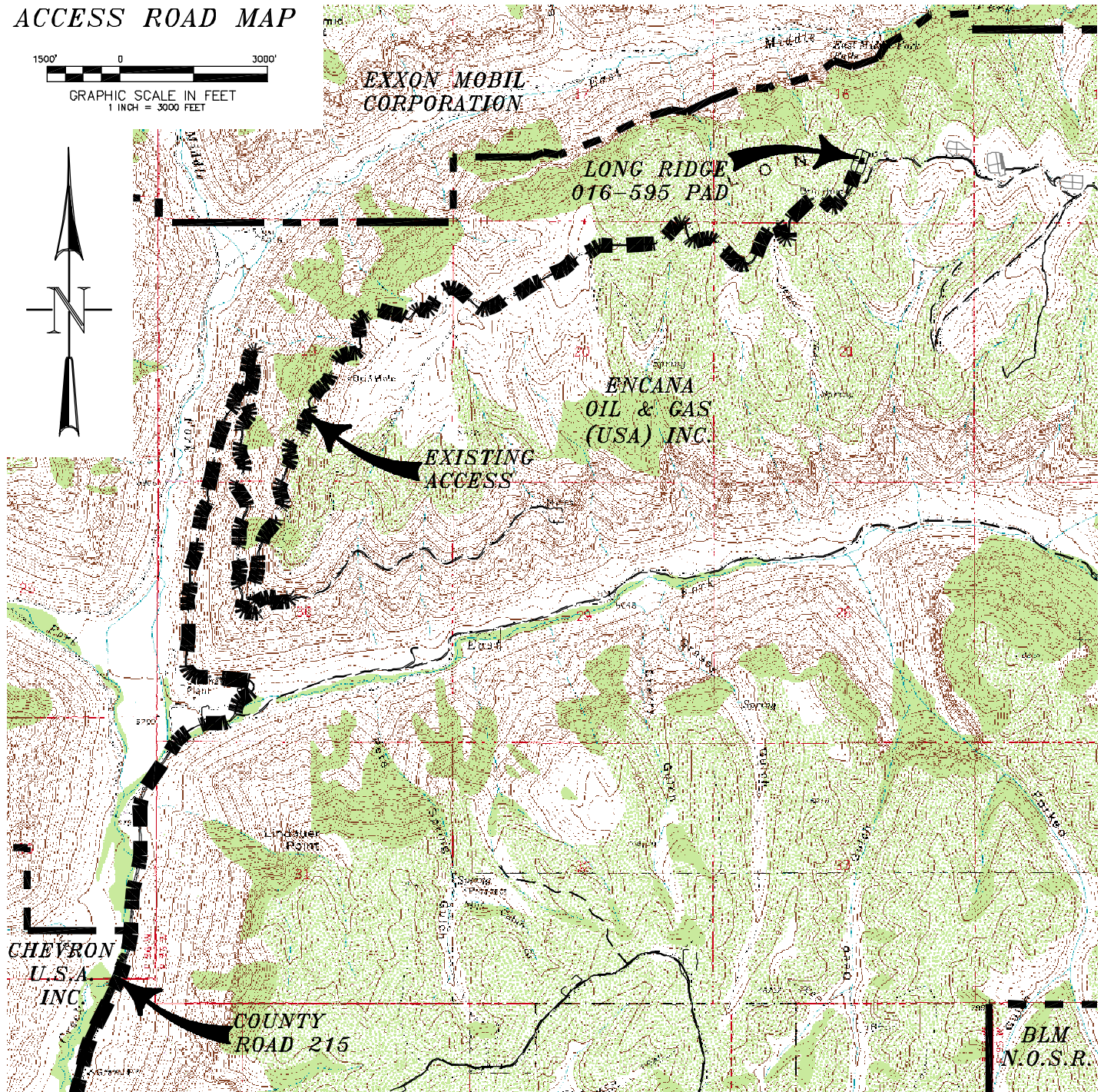
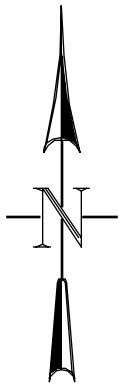


# ACCESS ROAD MAP

1500' 0 3000'  
GRAPHIC SCALE IN FEET  
1 INCH = 3000 FEET



## ACCESS:

FROM THE INTERSECTION OF HIGHWAY 6 & 24 AND COUNTY ROAD 215 AT PARACHUTE, PROCEED IN A GENERAL NORTHERLY DIRECTION ALONG COUNTY ROAD 215  $\pm 10.7$  MILES TO A POINT WHERE THE PAVEMENT BECOMES A DIRT/GRAVEL ROAD, CONTINUE ALONG THE DIRT/GRAVEL ROAD IN A GENERAL NORTHERLY DIRECTION  $\pm 3.3$  MILES TO A LOCKED GATE, CONTINUE ALONG THE DIRT/GRAVEL ROAD IN A GENERAL NORTHEASTERLY DIRECTION  $\pm 3.9$  MILES TO AN INTERSECTION WITH AN EXISTING WELL PAD ACCESS ROAD ON THE LEFT, PROCEED LEFT IN A GENERAL NORTHERLY DIRECTION  $\pm 500$  FEET TO THE LONG RIDGE 016-595 WELL PAD, BEING THE LOCATION.



CONSTRUCTION SURVEYS, INC.  
0012 SUNRISE BLVD.  
SILT, CO 81652  
(970)876-5753

Long Ridge 016-595  
W 1/2 SE 1/4 SECTION 16, T. 5 S., R. 95 W.  
BERRY PETROLEUM COMPANY

SCALE: 1" = 3000'

SHEET 4 OF 11