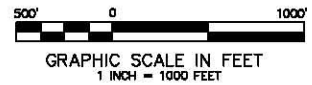


Long Ridge 116-595  
Pad Location



SECTION CORNER  
LOCATION BASED ON GLO  
RECORD INFORMATION

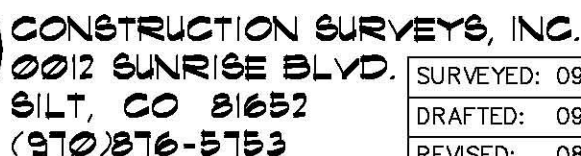
FIELD SURVEYED WELL  
LOCATION

CALCULATED BOTTOM  
HOLE LOCATION

THIS WELL LOCATION PLAT WAS PREPARED FOR BERRY PETROLEUM COMPANY TO LOCATE THE LONG RIDGE LR16D I16 595 WELL, 1529 FEET FROM THE SOUTH LINE AND 272 FEET FROM THE EAST LINE IN THE NE1/4 SE1/4 OF SECTION 16, T. 5 S., R. 95 W. OF THE 6TH P.M. GARFIELD COUNTY, COLORADO.

## SURVEYOR'S CERTIFICATE

- I, George R. Bauer: a Professional Land Surveyor in the State of Colorado do hereby certify that this Survey was made under my direct supervision, and that this Plot represents said Survey.



SURVEYED: 09/08/10	SCALE: 1" = 1000'
DRAFTED: 09/16/10	DWG: Berry/LongRidge I16-595.dwg
REVISED: 08/24/10	SHEET: 1 of 11