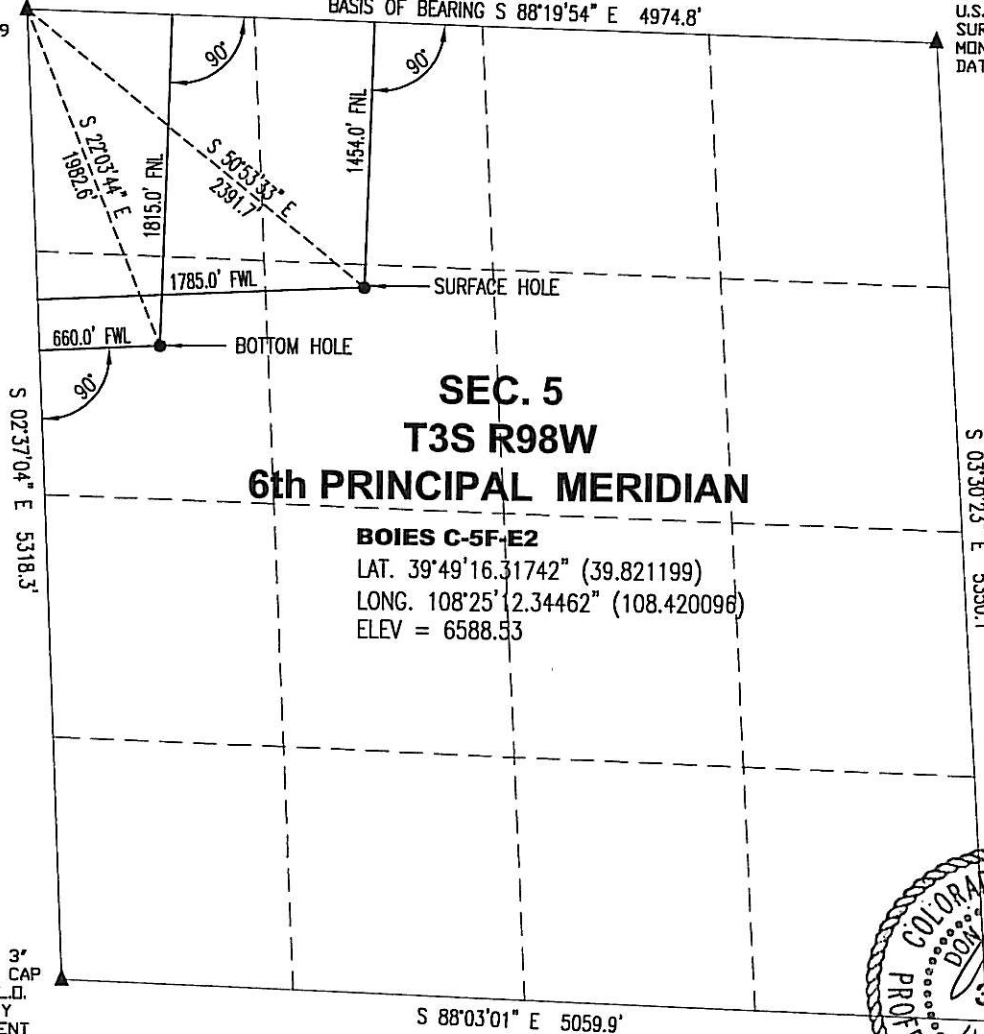


FOUND 3"
BRASS CAP
U.S. G.L.D.
SURVEY
MONUMENT
DATED 1939

FOUND 3"
BRASS CAP
U.S. G.L.D.
SURVEY
MONUMENT
DATED 1939

BASIS OF BEARING S 88°19'54" E 4974.8'



SEC. 5

T3S R98W

6th PRINCIPAL MERIDIAN

BOIES C-5F-E2

LAT. 39°49'16.31742" (39.821199)

LONG. 108°25'12.34462" (108.420096)

ELEV = 6588.53

FOUND 3"
BRASS CAP
U.S. G.L.D.
SURVEY
MONUMENT
DATED 1940

S 88°03'01" E 5059.9'



LEGEND SYMBOL

- PROPOSED WELL HEAD
- ▲ SECTION CORNERS LOCATED

OPERATOR WHITING OIL AND GAS CORPORATION
LEASE BOIES RANCH
SECTION 5 TOWNSHIP T3S RANGE R98W 6th PRINCIPAL MERIDIAN
COUNTY RIO BLANCO COUNTY, COLORADO

SURFACE LOCATION OF WELL 1454.0 FEET FROM THE NORTH LINE, AND
1785.0 FEET FROM THE WEST LINE
GROUND LEVEL ELEVATION 6588.53

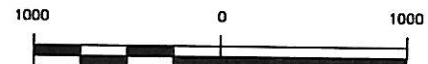
SURVEYOR'S STATEMENT:

I, DON E. JOHNSON, A LICENSED PROFESSIONAL LAND SURVEYOR IN THE STATE OF COLORADO, DO HEREBY STATE THAT THE WELL LOCATION SHOWN ON THIS PLAT WAS PLOTTED FROM FIELD NOTES OF ACTUAL SURVEYS MADE BY ME OR UNDER MY SUPERVISION, AND THAT THIS PLAT IS NOT A LAND SURVEY PLAT OR IMPROVEMENT SURVEY PLAT, AND THAT IT IS NOT TO BE RELIED UPON FOR THE ESTABLISHMENT OF FENCE, BUILDING, OR OTHER FUTURE IMPROVEMENT LINES.

DON E. JOHNSON
P.L.S. #34593

NOTE: THIS EXHIBIT IS INTENDED ONLY TO DEPICT THE PROPOSED WELL LOCATION AND DOES NOT REPRESENT A MONUMENTED BOUNDARY SURVEY.

SCALE 1" = 1000'



- 1) BASIS OF BEARING: GPS OBSERVATION ALONG THE NORTH LINE OF SAID SECTION 5.
BEARS: S 88°19'54" E
- 2) DATE FIELD SURVEY AND MEASUREMENTS: 1/4/07
PDDP: 2.9, INST. OPERATOR: J. WILLIAMS
- 3) ELEVATION DETERMINED FROM NGVD 1929 DATUM, AND COLLECTED VIA NAD 83 SURVEY GRADE.
- 4) SURFACE HOLE LOCATION APPROXIMATELY 270 FEET NORTHEAST OF BLACK SULFUR CREEK AND NO ADDITIONAL VISIBLE FEATURES IN THE VICINITY.
- 5) SURFACE USE IS AGRICULTURAL.

FORERUNNER 211 ROCK POINT DR., #101 BURLINGAME, CA 94010 (970) 378-7767	PROJ. NO. 12075-U	FILE NO. PA05F-E2.dwg	BOIES C-5F-E2 WELL LOCATION PLAT		REV 1
	DRAWN BY SL	DATE 4/20/07	CHECKED WHITING	WHITING OIL AND GAS CORPORATION	