
BILL BARRETT CORPORATION E-BILL

**GGU LINKENHOKER 23A-31-961
MAMM CREEK
Garfield County , Colorado**

Cement Surface Casing
29-Jul-2010

Post Job Report

The Road to Excellence Starts with Safety

Sold To #: 343492	Ship To #: 2798112	Quote #:	Sales Order #: 7534498
Customer: BILL BARRETT CORPORATION E-BILL	Customer Rep: South, Jodi		
Well Name: Linkenhoker	#: 23A-31-961	API/UWI #: 045-19530	
Field: MAMM CREEK	City (SAP): SILT	County/Parish: Garfield	State: Colorado
Contractor: PROPETRO	Rig/Platform Name/Num: PRO PETRO		
Job Purpose: Cement Surface Casing			
Well Type: Development Well	Job Type: Cement Surface Casing		
Sales Person: METLI, MARSHALL	Srv Supervisor: KUKUS, CRAIG	MBU ID Emp #: 369124	

Job Personnel

HES Emp Name	Exp Hrs	Emp #	HES Emp Name	Exp Hrs	Emp #	HES Emp Name	Exp Hrs	Emp #
KUKUS, CRAIG A	4	369124	MUHLESTEIN, RYAN Herrick	4	453609	PHILLIPS, MARK Bejar	4	445272

Equipment

HES Unit #	Distance-1 way	HES Unit #	Distance-1 way	HES Unit #	Distance-1 way	HES Unit #	Distance-1 way
10567589C	120 mile	10783493	120 mile	10822007	120 mile	10829469	120 mile
10995027	120 mile						

Job Hours

Date	On Location Hours	Operating Hours	Date	On Location Hours	Operating Hours	Date	On Location Hours	Operating Hours
7/29/10 4		1						
TOTAL	Total is the sum of each column separately							

Job

Formation Name	Da	te	Time	Time Zone
Formation Depth (MD) Top Bottom	Called Out	29 - Jul - 2010	11:00	MST
Form Type BHST	On Location	29 - Jul - 2010	14:00	MST
Job depth MD 750. ft Job Depth TVD 750. ft	Job Started	29 - Jul - 2010	15:47	MST
Water Depth Wk Ht Above Floor 3. ft	Job Completed	29 - Jul - 2010	16:34	MST
Perforation Depth (MD) From To	Departed Loc	29 - Jul - 2010	18:00	MST

Well Data

Description	New / Used	Max pressure psig	Size in	ID in	Weight lbm/ft	Thread Gra	de	Top MD ft	Bottom MD ft	Top TVD ft	Bottom TVD ft
-------------	------------	-------------------	---------	-------	---------------	------------	----	-----------	--------------	------------	---------------

Sales/Rental/3rd Party (HES)

Description Qty	Qty uom	Depth	Supplier
PLUG,CMTG,TOP,9 5/8,HWE,8.16 MIN/9.06 MA	1 EA		
R/A DENSOMETER W/CHART RECORDER,/JOB,ZI	1 JOB		
ADC (AUTO DENSITY CTRL) SYS, /JOB,ZI	1 JOB		
PORT. DATA ACQUIS. W/OPTICEM RT W/HES	1 EA		

Tools and Accessories

Type Size	Qty	Make	Depth	Type	Size	Qty	Make	Depth	Type	Size	Qty	Make
Guide Shoe				Packer					Top Plug	9 5/8	1	HES
Float Shoe				Bridge Plug					Bottom Plug			
Float Collar				Retainer					SSR plug set			
Insert Float									Plug Container			
Stage Tool									Centralizers			

Miscellaneous Materials

Gelling Agt	Conc	Surfactant	Conc	Acid Type	Qty	Conc	%
Treatment Fld	Conc	Inhibitor	Conc	Sand Type	Size	Qty	

Fluid Data

Stage/Plug #: 1	Fluid Name	Qty	Qty uom	Mixing Density lbm/gal	Yield ft ³ /sk	Mix Fluid Gal/sk	Rate bbl/min	Total Mix Fluid Gal/sk
Fluid #	Stage Type							

Stage/Plug #: 1									
Fluid #	Stage Type	Fluid Name	Qty	Qty uom	Mixing Density lbm/gal	Yield ft ³ /sk	Mix Fluid Gal/sk	Rate bbl/min	Total Mix Fluid Gal/sk
1	WATER SPACER		20.00	bbl	.	.0	.0	.0	
2	Lead Cement	VERSACEM (TM) SYSTEM (452010)	120.0	sacks	12.3	2.38	13.75		
3	Tail Cement	VERSACEM (TM) SYSTEM (452010)	120.0	sacks	14.2	1.43	6.85		
4	DISPLACEMENT		53.00	bbl	.	.0	.0	.0	
Calculated Values		Pressures		Volumes					
Displacement	53	Shut In: Instant		Lost Returns	0	Cement Slurry	81.5	Pad	
Top Of Cement	SURFACE	5 Min		Cement Returns	25	Actual Displacement	53	Treatment	
Frac Gradient		15 Min		Spacers	20	Load and Breakdown		Total Job	154.5
Rates									
Circulating		Mixing	4.5	Displacement	6	Avg. Job			5
Cement Left In Pipe	Amount	44.7 ft	Reason	Shoe Joint					
Frac Ring # 1 @	ID	Frac ring # 2 @	ID	Frac Ring # 3 @	ID	Frac Ring # 4 @	ID		
The Information Stated Herein Is Correct				Customer Representative Signature					

The Road to Excellence Starts with Safety

Sold To #: 343492	Ship To #: 2798112	Quote #:	Sales Order #: 7534498
Customer: BILL BARRETT CORPORATION E-BILL		Customer Rep: South, Jodi	
Well Name: LINKENHOKER	Well #: 23A-31-961	API/UWI #: 045-19530	
Field: MAMM CREEK	City (SAP): SILT	County/Parish: Garfield	State: Colorado
Legal Description:			
Lat: N 0 deg. OR N 0 deg. 0 min. 0 secs.		Long: E 0 deg. OR E 0 deg. 0 min. 0 secs.	
Contractor: PROPETRO		Rig/Platform Name/Num: PRO PETRO	
Job Purpose: Cement Surface Casing			Ticket Amount:
Well Type: Development Well		Job Type: Cement Surface Casing	
Sales Person: METLI, MARSHALL		Srv Supervisor: KUKUS, CRAIG	MBU ID Emp #: 369124

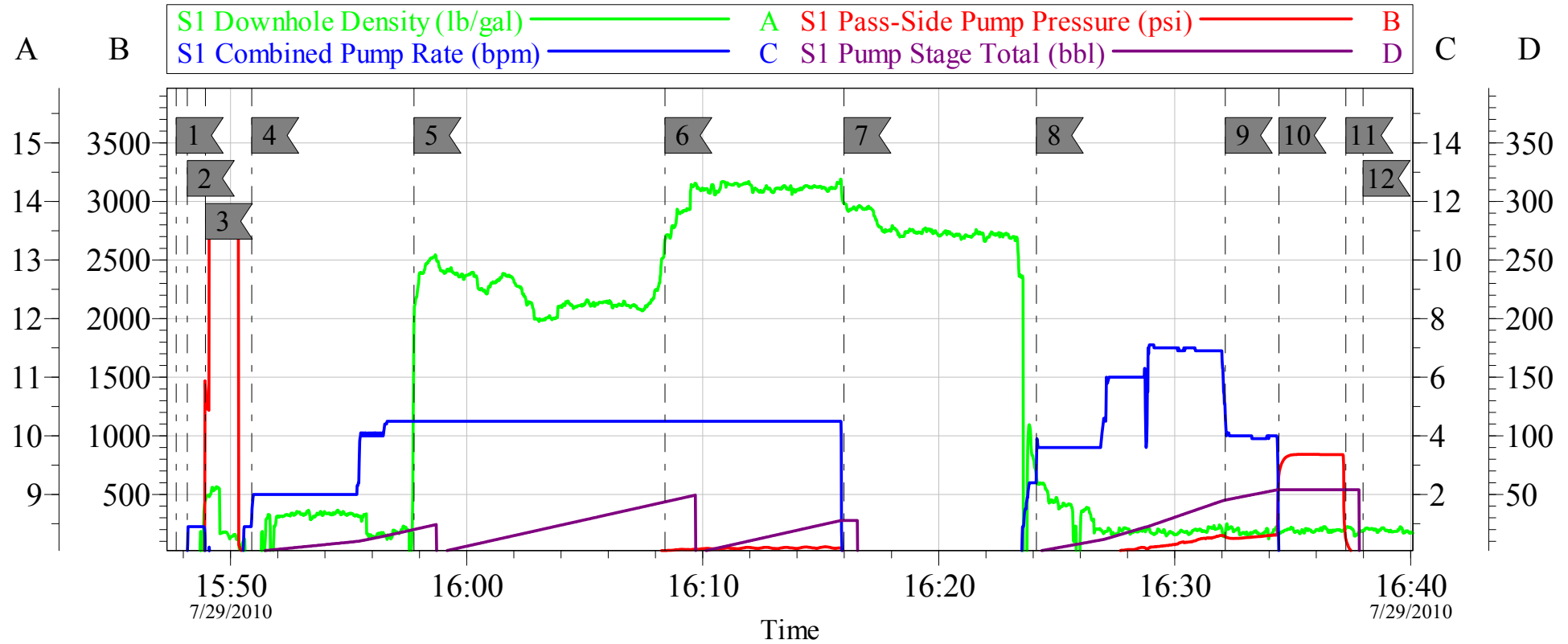
Activity Description	Date/Time	Cht #	Rate bbl/min	Volume bbl		Pressure psig		Comments
				Stage	Total	Tubing	Casing	
Call Out	07/29/2010 11:00							
Depart Yard Safety Meeting	07/29/2010 12:15							SAFETY MEETING INVOLVING THE ENTIRE CMT CREW
Arrive At Loc	07/29/2010 14:00							
Assessment Of Location Safety Meeting	07/29/2010 14:15							ASSESSMENT OF LOCATION INVOLVING THE ENTIRE CMT CREW
Pre-Rig Up Safety Meeting	07/29/2010 14:25							SAFETY MEETING INVOLVING THE ENTIRE CMT CREW
Rig-Up Equipment	07/29/2010 14:30							
Circulate Well	07/29/2010 14:30							NONE
Pre-Job Safety Meeting	07/29/2010 15:37							SAFETY MEETING INVOLVING EVERYONE ON LOCATION
Start Job	07/29/2010 15:47							T.D 750 T.P 732.45 S.J 44.7 MUD 8.33 9 5/8 PIPE 36# J-55 O H 12 1/4
Other	07/29/2010 15:48		1	2				FILL LINES
Pressure Test	07/29/2010 15:48	0.5				2500.0		PRESSURE TEST GOOD
Pump Spacer 1	07/29/2010 15:50	4.5		20			37.0	FRESH WATER SPACER
Pump Lead Cement	07/29/2010 15:57	4.5		50.9			49.0	PUMPED 120 SKS LEAD CMT AT 12.3 PPG 2.38 Y 13.75 GAL/SKS

Cementing Job Log

Activity Description	Date/Time	Cht #	Rate bbl/ min	Volume bbl		Pressure psig		Comments
				Stage	Total	Tubing	Casing	
Pump Tail Cement	07/29/2010 16:08	4.5		30.5			75.0	PUMPED 120 SKS TAIL CMT AT 14.2 PPG 1.43 Y 6.85 GAL/SKS
Shutdown	07/29/2010 16:15							OFF LINE DROP PLUG
Drop Top Plug	07/29/2010 16:15							PLUG LEFT THE PLUG CONTAINER
Pump Displacement	07/29/2010 16:24		6	53.16		176.0		PUMPED FRESH WATER
Slow Rate	07/29/2010 16:32	4		43			160.0	LAST 10 bbls 500 PSI OVER
Bump Plug	07/29/2010 16:34		4	53.16		820.0		PLUG LANDED
Check Floats	07/29/2010 16:37							FLOATS HELD/ GOT 1/4 BBL BACK
End Job	07/29/2010 16:37							GOT 1 BBL BACK TO TANKS
Pre-Rig Down Safety Meeting	07/29/2010 16:40							SAFETY MEETING INVOLVING THE ENTIRE CMT CREW
Rig-Down Equipment	07/29/2010 16:45							AT 10 BBL TAIL CEMENT GONE GOT RETURNS/HELD THRU OUT REMAINDER OF THE JOB
Safety Meeting - Departing Location	07/29/2010 17:50							SAFETY MEETING INVOLVING THE ENTIRE CMT CREW
Comment	07/29/2010 18:00							THANK YOU FOR USING HALLIBURTON, CRAIG KUKUS AND CREW

BARRETT

SURAFCE 9 5/8



Local Event Log

1	START JOB	15:47:42	2	PRIME LINES	15:48:10
3	TEST LINES	15:48:56	4	PUMP WATER SPACER	15:50:54
5	PUMP LEAD CEMENT	15:57:46	6	PUMP TAIL CEMENT	16:08:24
7	SHUT DOWN/DROP PLUG	16:15:59	8	PUMP DISPLACEMENT H2O	16:24:08
9	SLOW RATE	16:32:09	10	BUMP PLUG	16:34:25
11	CHECK FLOATS	16:37:15	12	END JOB	16:37:59

Customer: BARRETT
Well Description: Linkenhoker 23A-31-961
Company Rep: JODY SOUTH

Job Date: 29-Jul-2010
Job Type: SURFACE
Cement Supervisor: CRAIG KUKS

Sales Order #: 7534498
ADC Used: YES
Elite #/Operator: #3 RYAN MUHLESTEIN

OptiCem v6.4.8
29-Jul-10 16:56