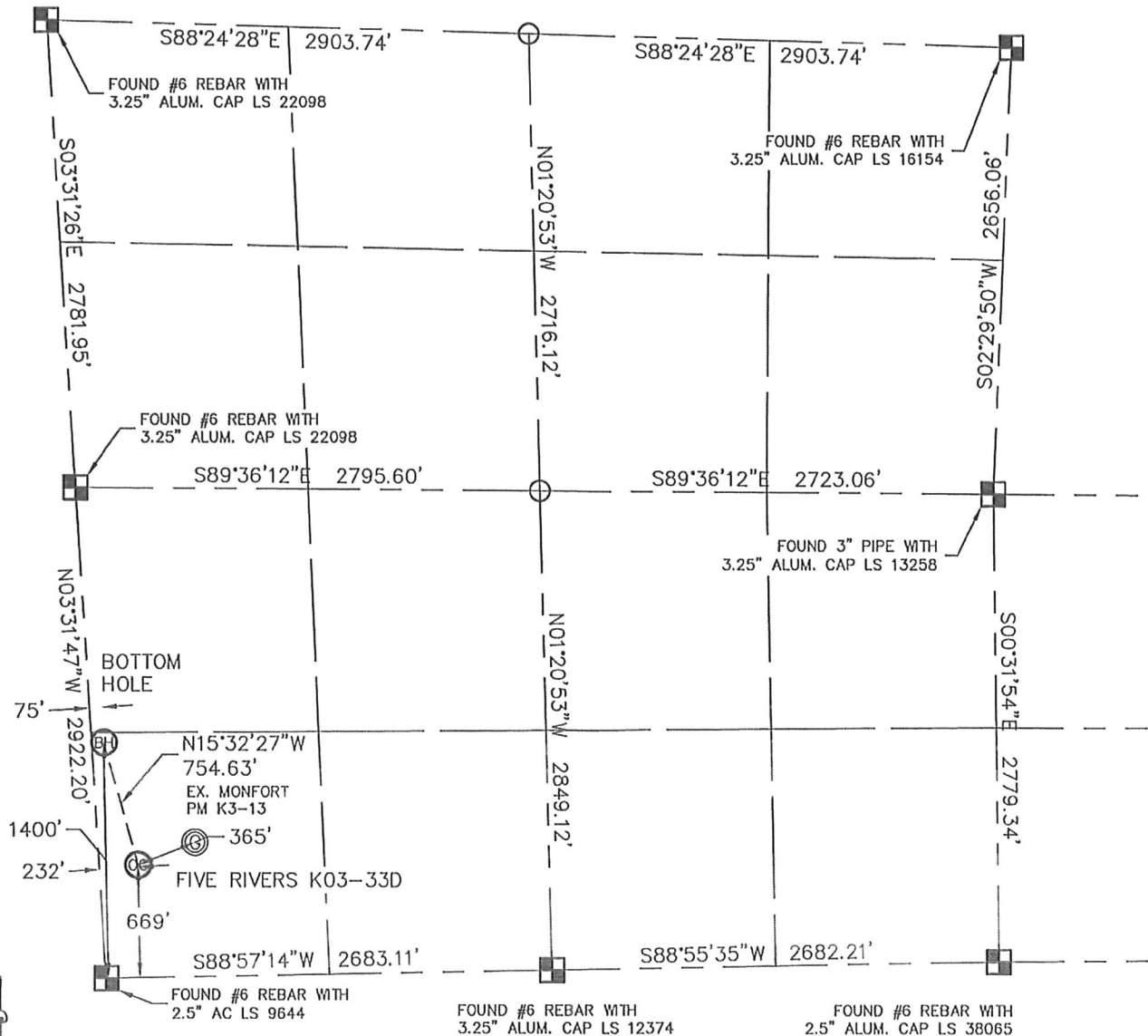


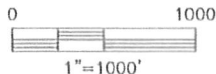
WELL LOCATION CERTIFICATE

THIS MAP DOES NOT REPRESENT A BOUNDARY SURVEY

SECTION: 3
TOWNSHIP: 4N
RANGE: 66W

In accordance with a request from JOE MARTIN with Noble Energy Inc., King Surveyors Inc. has determined the surface location of the FIVE RIVERS K03-33D to be 669' from the South line and 232' from the West line and the bottom hole to be 1400' from the South line and 75' from the West line as measured at right angles from the section lines of Section 3, Township 4 North, Range 66 West of the Sixth Principal Meridian, County of Weld, State of Colorado.

I hereby state that this Well Location Certificate was prepared by me, or under my direct supervision, that the fieldwork was completed on 3-31-10, for and on behalf of Noble Energy Inc.. That this is not a Land Survey Plat or an Improvement Survey Plat, and that it is not to be relied upon for establishment of fence, building, or other future improvement lines.



NOTE:

- 1) Bearings shown are Grid Bearings of the Colorado State Plane Coordinate System, North Zone, North American Datum 1983/2007. The lineal dimensions as contained herein are based upon the "U.S. Survey Foot."
- 2) Ground elevations are based on an observed GPS elevation (NAVD 1988 DATUM).
- 3) NEAREST EXISTING WELL: MONFORT PM K3-13
- 4) IMPROVEMENTS: See VISIBLE IMPROVEMENTS exhibit for all visible improvements within 600' of well head.
- 5) SURFACE USE: CROP FIELD

SURFACE LOCATION
LATITUDE: 40.33538°N
LONGITUDE: 104.77262°W
PDOP: 1.3
ELEV: 4721
1/4, 1/4: SW1/4SW1/4
NEAREST PROPERTY LINE: 232' WEST

BOTTOM HOLE
LATITUDE: 40.33738°N
LONGITUDE: 104.77333°W

NOTE

According to Colorado law, you must commence any legal action based upon any defect in this W.L.C. within three years after you discover such defect. In no event, may any action based upon any defect in this survey be commenced more than ten years after the date of the certificate shown hereon. (13-80-105 C.R.S.)

LEGEND

- = ALIQUOT MONUMENT AS DESCRIBED
 = CALCULATED POSITION

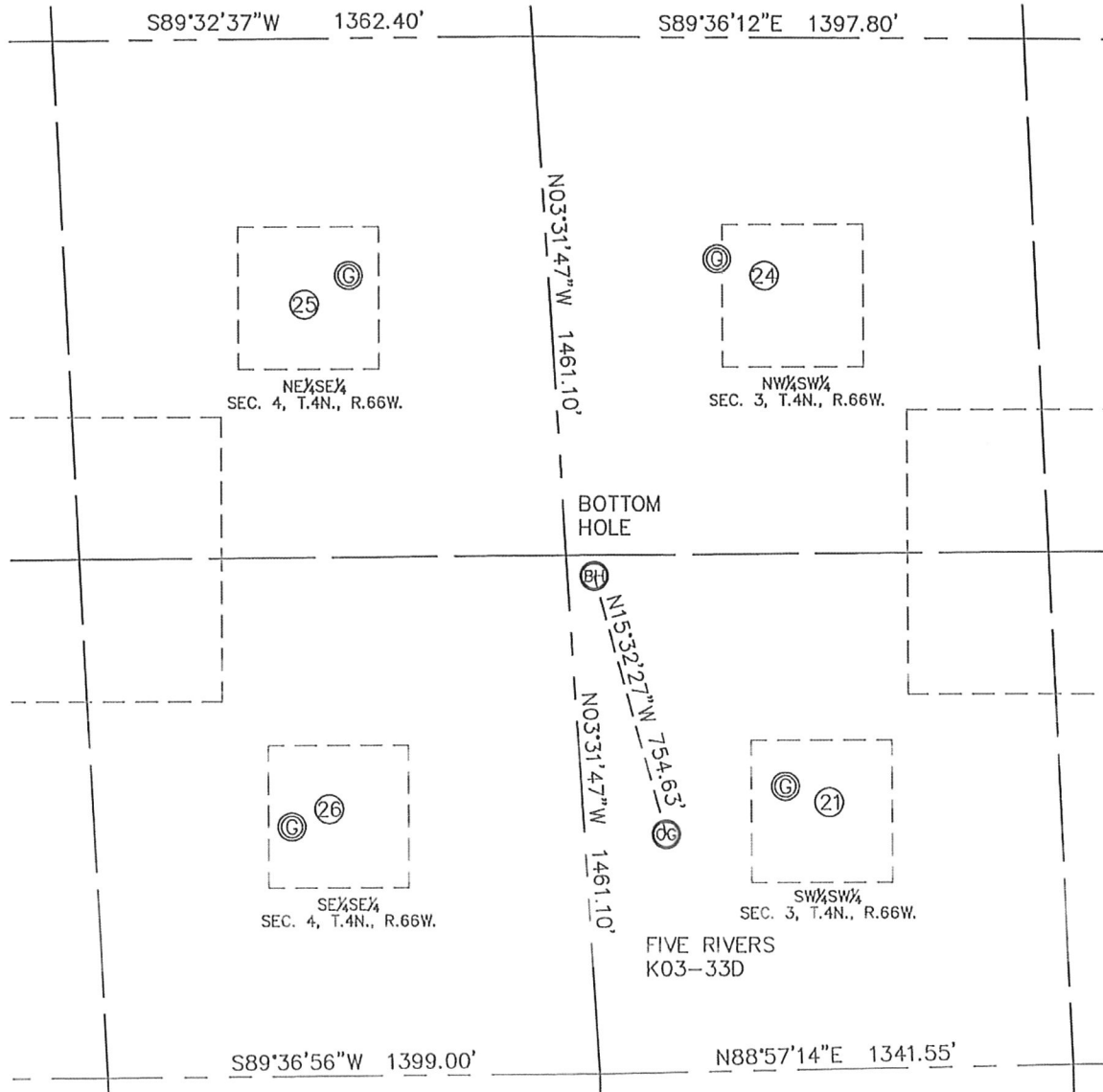
Michael Chad Dillka, On Behalf of King Surveyors, Inc.
Colorado Licensed Professional Land Surveyor #38106

PROJECT#: 2010055



SITE SKETCH

SECTION: 3
TOWNSHIP: 4N
RANGE: 66W



(21)
MONFORT PM K 3-13
SW 1/4 SW 1/4
798' FSL
578' FWL
LAT-40.33574°N
LONG-104.77140°W
PDOP: 2.9
ELEV: 4720'

(24)
RUMSEY 3-1216
NW 1/4 SW 1/4
2285' FSL
482' FWL
LAT-40.33982°N
LONG-104.77204°W
PDOP: 3.2
ELEV: 4685'

(25)
RUMSEY 4-9
NE 1/4 SE 1/4
2251' FSL
567' FEL
LAT-40.33971°N
LONG-104.77580°W
PDOP: 2.7
ELEV: 4687'

(26)
RUMSEY-MONFORT 2-4
SE 1/4 SE 1/4
704' FSL
830' FEL
LAT-40.33546°N
LONG-104.77644°W
PDOP: 1.6
ELEV: 4692'

