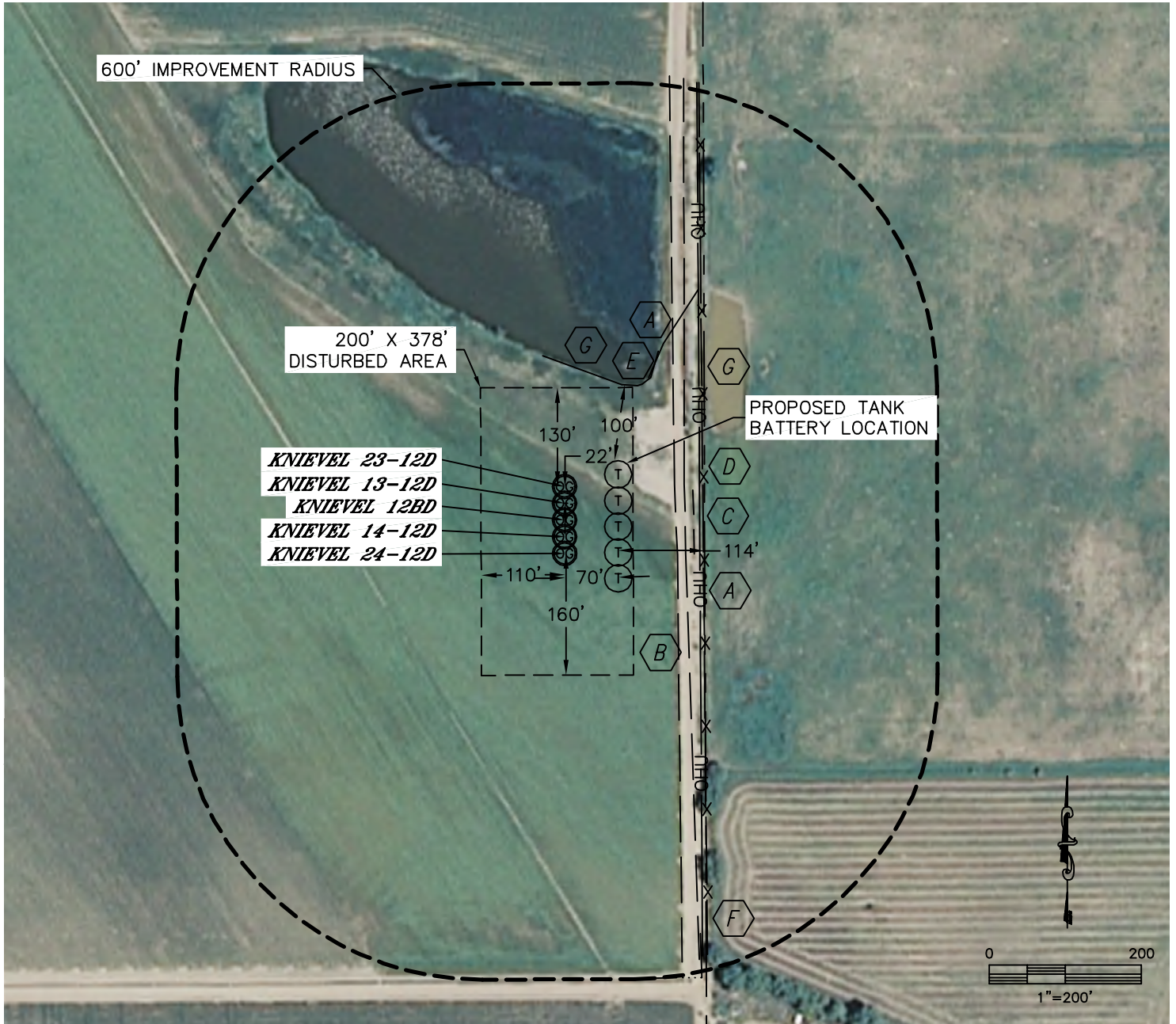




LOCATION DRAWING

SECTION: 12
TOWNSHIP: 6N
RANGE: 67W

KNIEVEL 23-12D, 13-12D, 12BD, 14-12D, 24-12D



IMPROVEMENTS:

- | | | | |
|--|----------------------------------|--|----------------------|
| | OVERHEAD UTILITY 178' E, 218' NE | | DITCH 572' SE |
| | FIELD ROAD 146' E | | POND 193' N, 212' NE |
| | CONCRETE PIPE 170' E | | |
| | FENCE 182' E | | |
| | IRRIGATION PUMP 212' NE | | |

NEAREST: BUILDING 760' SE, PUBLIC ROAD 1400' SE (COUNTY ROAD 70), ABOVE GROUND UTILITY 178' E, RAILROAD 5100' NW (ABANDONED), PROPERTY LINE 184' E