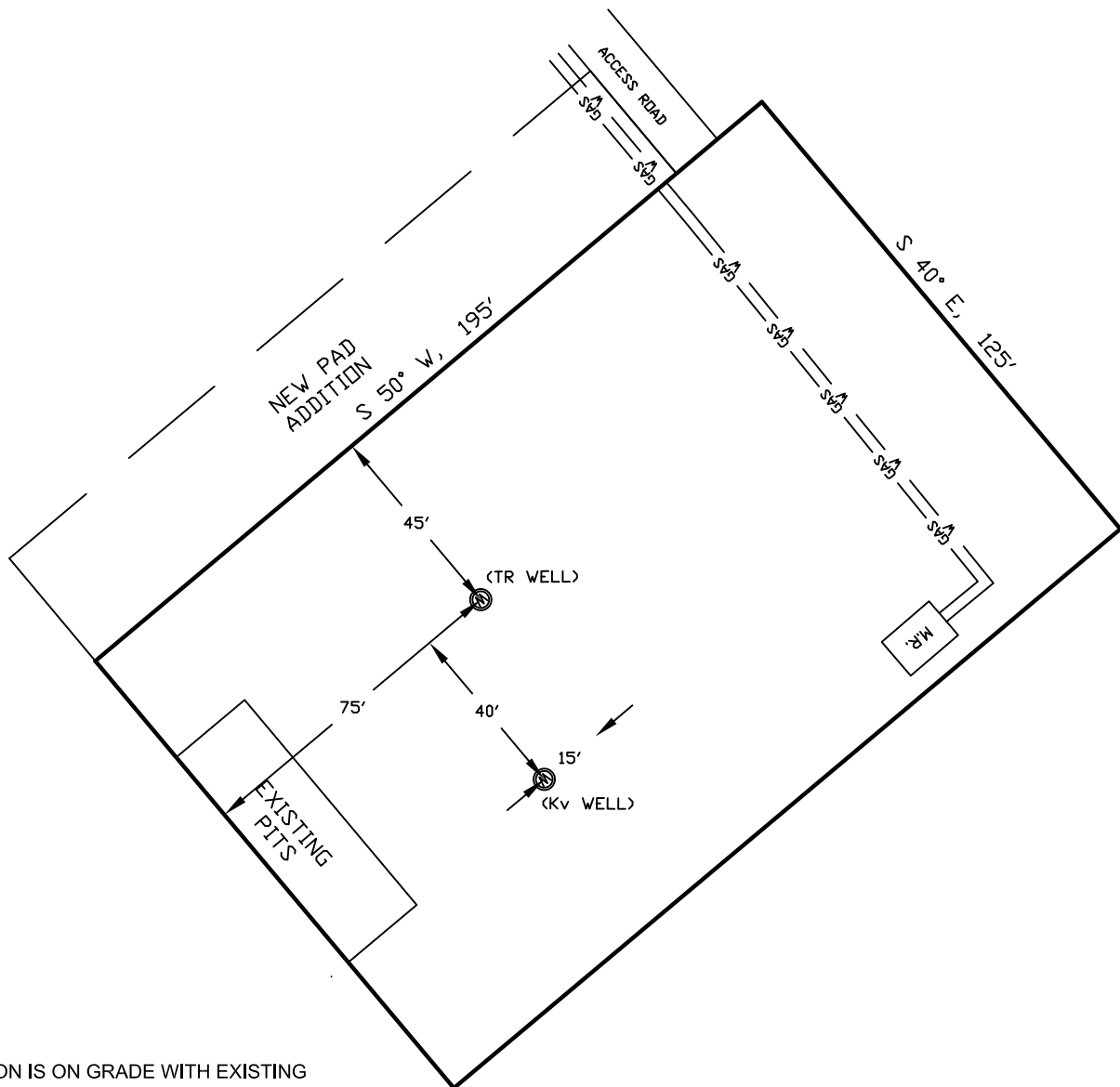


WELLSITE/PRODUCTION EQUIPMENT LAYOUT

OPERATOR: Pioneer Natural Resources

WELL NAME: Trimax 44-23 TR

SESE of SECTION 23 TOWNSHIP 32 S, RANGE 66 W OF THE 6TH P.M., IN LAS ANIMAS COUNTY



NOTE:

PAD ADDITION IS ON GRADE WITH EXISTING WELL PAD SURFACE - NO ADDITIONAL CUT AND FILL NEEDED. WILL USE EXISTING PIT FOR DRILLING.

NOTE:

MUD AND BLOW PITS WILL BE CONVERTED TO LINED EVAPORATION PITS FOR PRODUCTION.

WELLHEADS ARE TYPICALLY PCP DRIVE HEADS

LEGEND:

- = WELLHEAD
- = EXISTING WELLPAD
- = FENCE (4 STRAND)
- = 4" GAS GATHERING LINE
- = 2" WATER LINE
- M.R. = COMBO METER RUN AND WATER/GAS SEPARATOR
- G.D.S. = GAS DRIVE SYSTEM

GRAPHIC SCALE



(IN FEET)

1 inch = 40 ft.

September 21, 2010

Date Platted

SHIELDS SURVEY L^{td}. C^o.
Raton, New Mexico 87740
(575)445-1232